

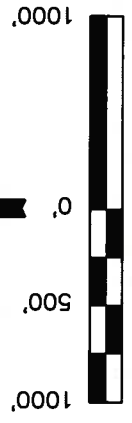
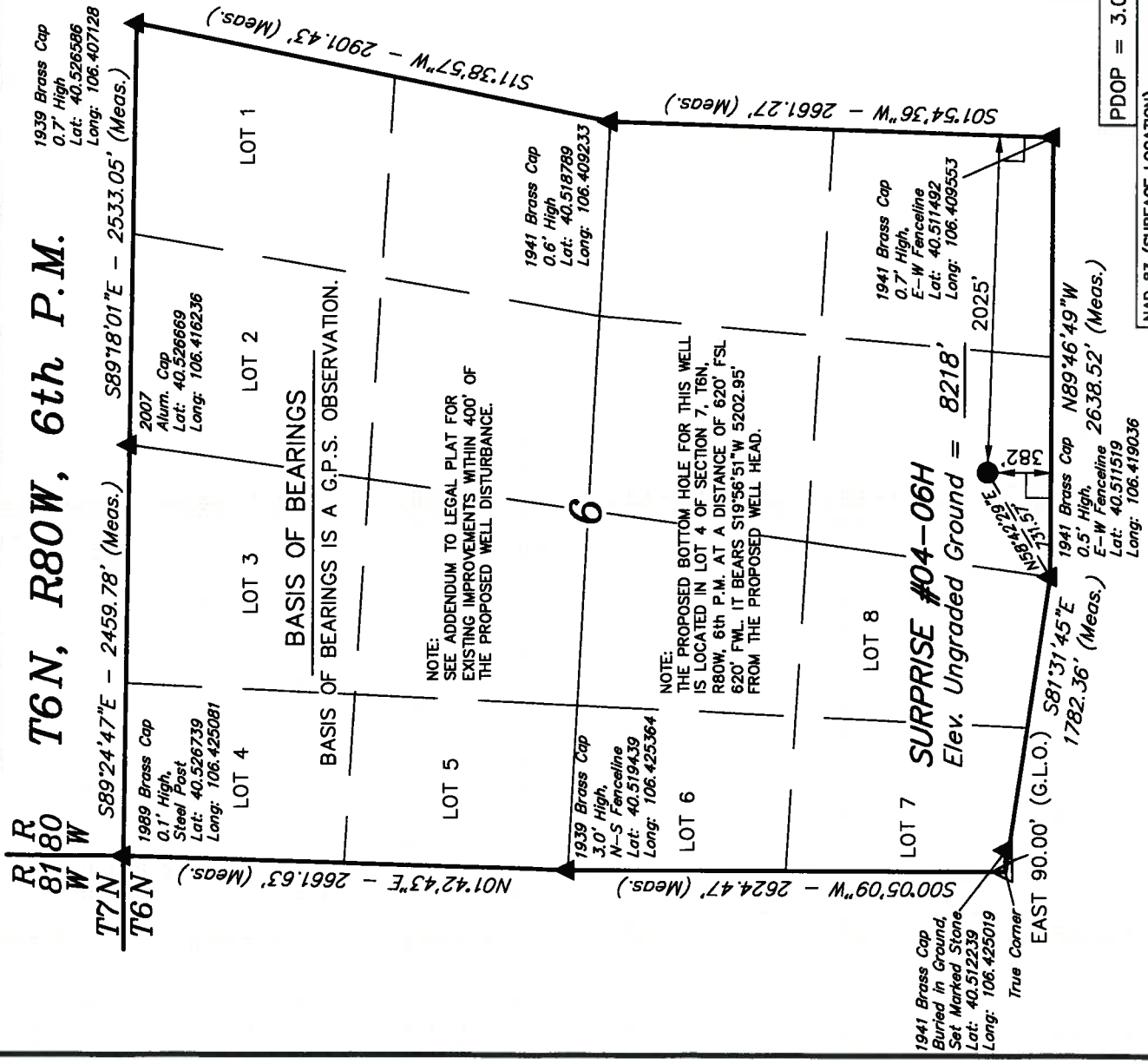
R 81
W 80
T6N, R80W, 6th P.M.

EOG RESOURCES, INC.

Well location, SURPRISE #04-06H (SURFACE LOCATION), located as shown in the SW 1/4 SE 1/4 of Section 6, T6N, R80W, 6th P.M., Jackson County, Colorado.

BASIS OF ELEVATION

SPOT ELEVATION AT THE SOUTHEAST CORNER OF SECTION 29, T7N, R80W, 6th P.M., TAKEN FROM THE COALMONT QUADRANGLE, COLORADO, JACKSON COUNTY 7.5 MINUTE QUAD. (TOPOGRAPHIC MAP) PUBLISHED BY THE UNITED STATES DEPARTMENT OF THE INTERIOR, GEOLOGICAL SURVEY. SAID ELEVATION IS MARKED AS BEING 8156 FEET



SCALE

CERTIFICATE

THIS IS TO CERTIFY THAT THE ABOVE PLAT WAS PREPARED FROM FIELD NOTES OF ACTUAL SURVEYS MADE BY ME OR UNDER MY SUPERVISION AND THAT THE SAME ARE TRUE AND CORRECT TO THE BEST OF MY KNOWLEDGE AND BELIEF.

REV: 01-04-10 K.G.
REVISED: 05-28-08
REVISED: 05-16-08

UNTAH ENGINEERING & LAND SURVEYING
85 SOUTH 200 EAST - VERNAL, UTAH 84078
(435) 789-1017

SCALE	DATE SURVEYED:	DATE DRAWN:
1" = 1000'	04-30-08	05-06-08
PARTY	REFERENCES	
J.R. N.W. C.C.	G.L.O. PLAT	
WEATHER	FILE	
WARM		

LEGEND:

- 90° SYMBOL
- PROPOSED WELL HEAD.
- SECTION CORNERS LOCATED.

NAD 83 (SURFACE LOCATION)
Latitude = 40°30'45.22" (40.512561)
Longitude = 106°25'00.44" (106.416789)
NAD 27 (SURFACE LOCATION)
Latitude = 40°30'45.29" (40.512581)
Longitude = 106°24'58.33" (106.416203)
STATE PLANE NAD 83
N: 1430884.307 E: 2745093.296
STATE PLANE NAD 27
N: 430882.058 E: 1745249.816

PDOP = 3.0

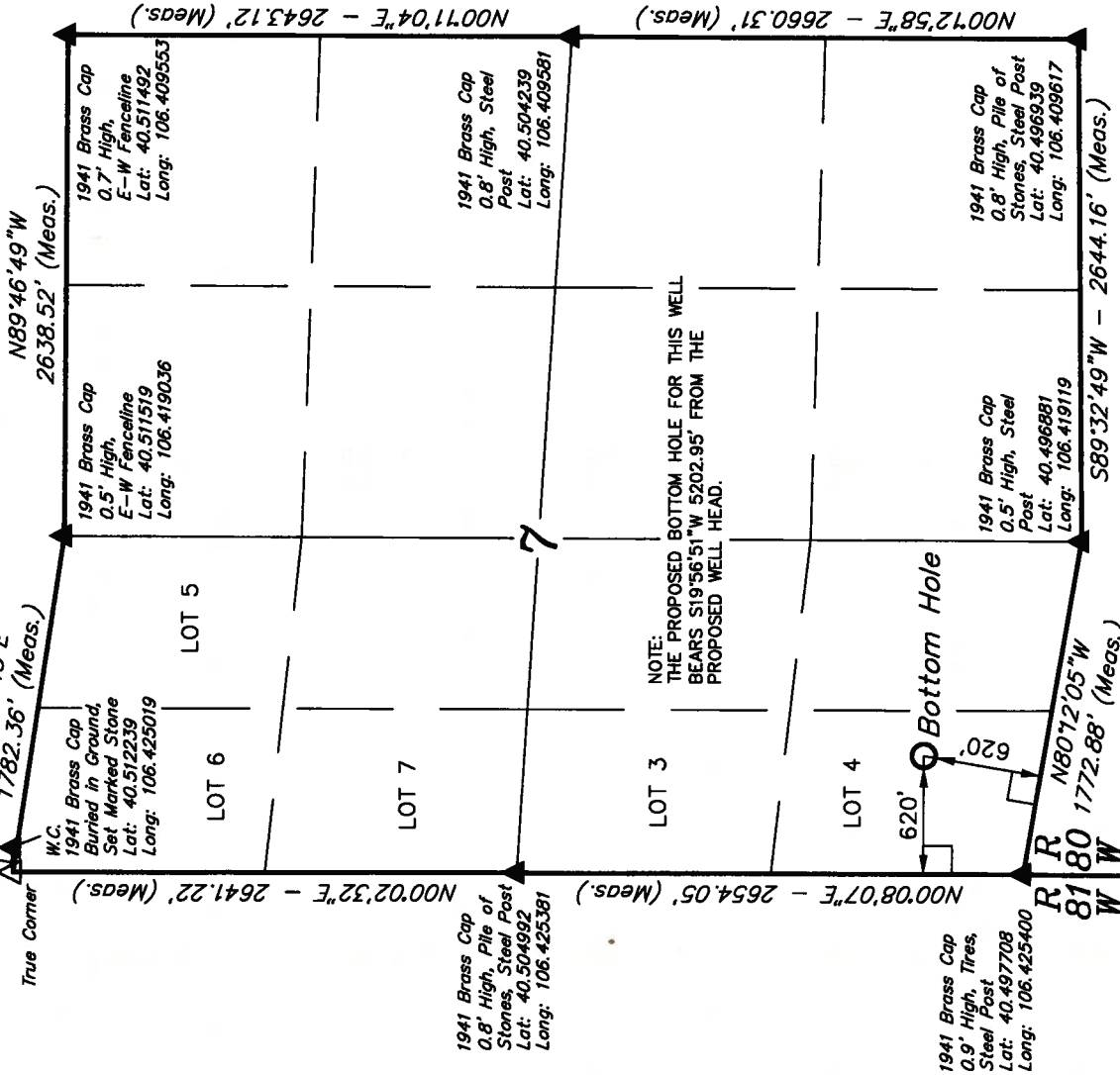
T6N, R80W, 6th P.M.

EOG RESOURCES, INC.

Well location, SURPRISE #04-06H (BOTTOM HOLE), located as shown in the NW 1/4 NE 1/4 of Section 7, T6N, R80W, 6th P.M., Jackson County, Colorado.

BASIS OF ELEVATION

SPOT ELEVATION AT THE SOUTHEAST CORNER OF SECTION 29, T7N, R80W, 6th P.M., TAKEN FROM THE COALMONT QUADRANGLE, COLORADO, JACKSON COUNTY 7.5 MINUTE QUAD. (TOPOGRAPHIC MAP) PUBLISHED BY THE UNITED STATES DEPARTMENT OF THE INTERIOR, GEOLOGICAL SURVEY. SAID ELEVATION IS MARKED AS BEING 8156 FEET

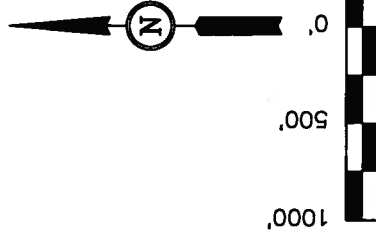


BASIS OF BEARINGS

BASIS OF BEARINGS IS A G.P.S. OBSERVATION.

LEGEND:

- 90° SYMBOL
- PROPOSED BOTTOM HOLE
- SECTION CORNERS LOCATED



SCALE

CERTIFICATE

THIS IS TO CERTIFY THAT THE ABOVE PLAT WAS PREPARED FROM FIELD NOTES OF ACTUAL SURVEYS MADE BY ME OR UNDER MY SUPERVISION AND THAT THE SAME ARE TRUE AND CORRECT TO THE BEST OF MY KNOWLEDGE AND BELIEF.

REV: 01-04-10 K.G.
REVISED: 05-28-08
REVISED: 05-16-08

UNTAH ENGINEERING & LAND SURVEYING

85 SOUTH 200 EAST - VERNAL, UTAH 84078

(435) 789-1017

SCALE 1" = 1000'	DATE SURVEYED: 04-30-08	DATE DRAWN: 05-06-08
PARTY J.R. N.W. C.C.	REFERENCES G.L.O. PLAT	
WEATHER WARM	FILE	
		EOG RESOURCES, INC.