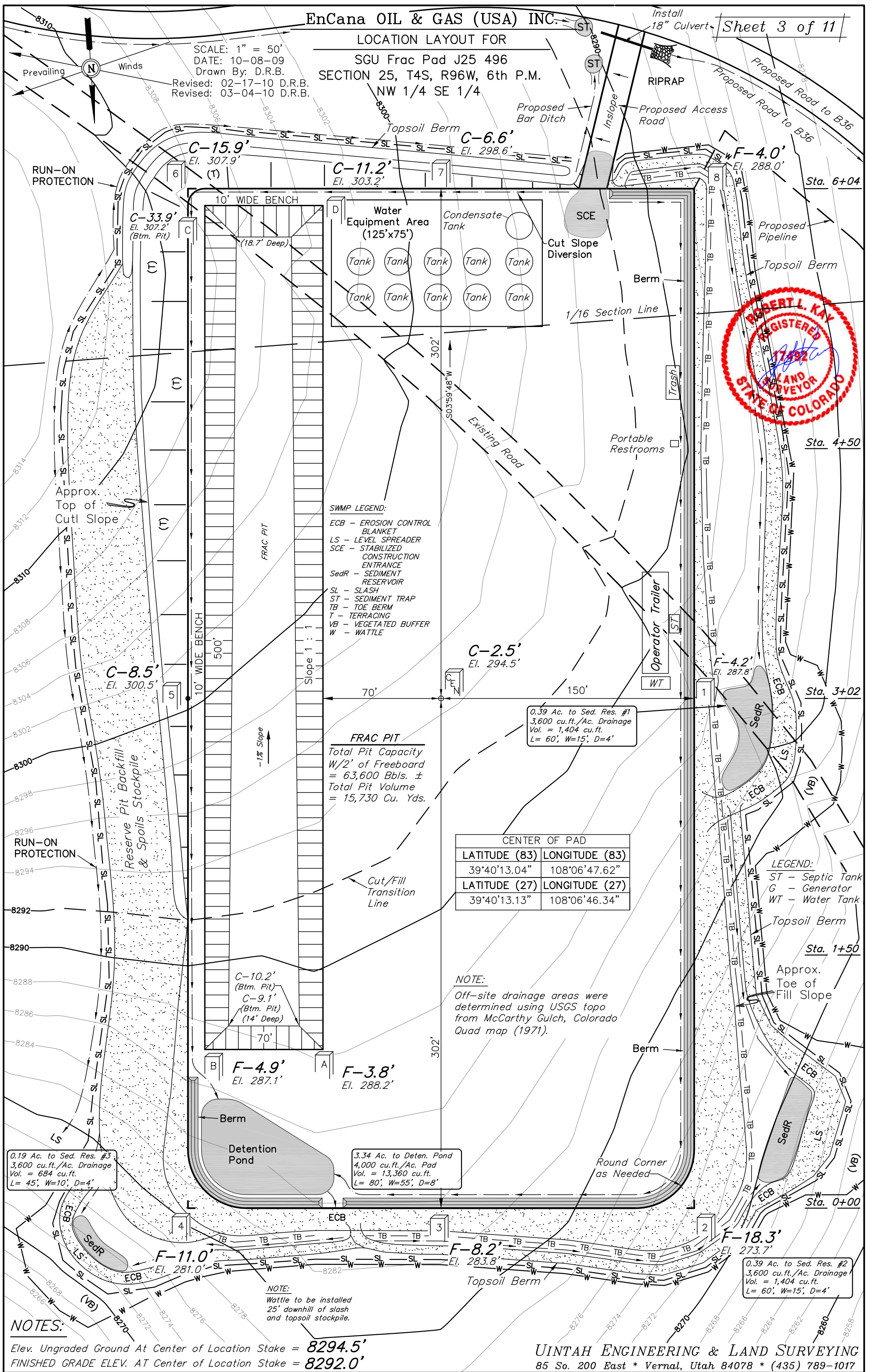


SGU Frac Pad J25 496
SECTION 25, T4S, R96W, 6th P.M.
NW 1/4 SE 1/4

SCALE: 1" = 50'
DATE: 10-08-09
Drawn By: D.R.B.
Revised: 02-17-10 D
Revised: 03-04-10 D



NOTES:

Elev. Ungraded Ground At Center of Location Stake = 8294.5'
FINISHED GRADE ELEV. AT Center of Location Stake = 8292.0'

UINTAH ENGINEERING & LAND SURVEYING
85 So. 200 East * Vernal, Utah 84078 * (435) 789-1017