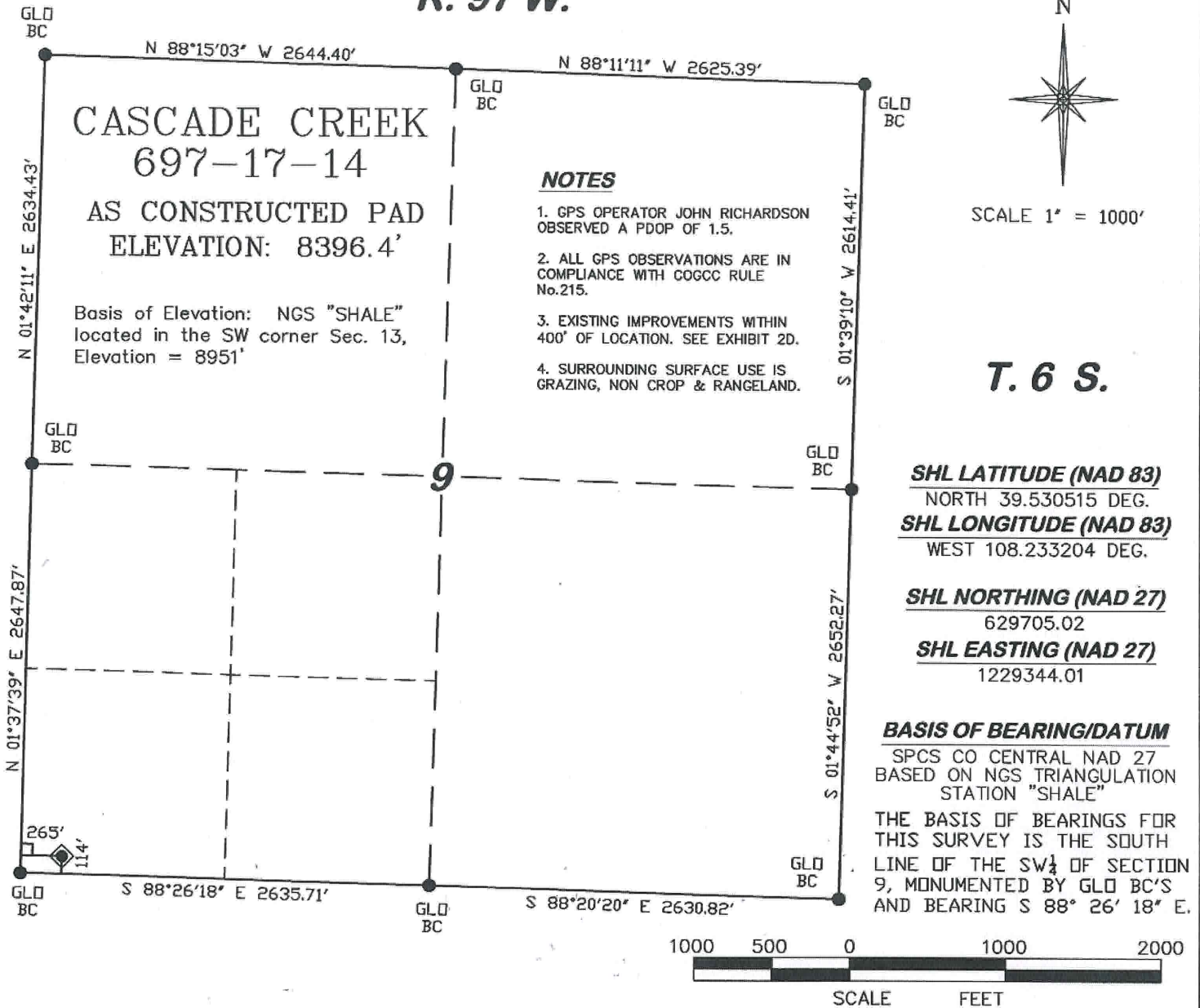


**R. 97 W.**



**DRG** **RIFFIN & ASSOCIATES, INC.**  
(307) 362-5028 1414 ELK ST., ROCK SPRINGS, WY 82901

**PLAT FOR DRILLING LOCATION IN THE**  
**SW 1/4 OF SW 1/4 SECTION 9 FOR**  
**OXY USA WTP LP**

**DRAWN: 1/11/10 - DEH**

**SCALE: 1" = 1000'**

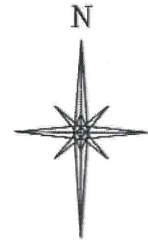
**REVISED: N/A**

**JOB No. 10841**

**EXHIBIT 1**

**114' F/SL & 265' F/WL, SECTION 9**  
**T. 6 S., R. 97 W., 6th P.M.,**  
**GARFIELD COUNTY, COLORADO**

**R. 97 W.**



SCALE 1" = 1000'

**T. 6 S.**

**CASCADE CREEK**  
697-17-14

**BHL LATITUDE (NAD 83)**  
NORTH 39.527542 DEG.  
**BHL LONGITUDE (NAD 83)**  
WEST 108.239108 DEG.  
**BHL NORTHING (NAD 27)**  
628673  
**BHL EASTING (NAD 27)**  
1227647

**BASIS OF BEARING/DATUM**  
SPCS CO CENTRAL NAD 27  
BASED ON NGS TRIANGULATION  
STATION "SHALE"  
THE BASIS OF BEARINGS FOR  
THIS SURVEY IS THE SOUTH  
LINE OF THE SW $\frac{1}{4}$  OF SECTION  
9, MONUMENTED BY GLO BC'S  
AND BEARING S 88° 26' 18" E.

**TARGET LATITUDE (NAD 83)**  
NORTH 39.527718 DEG.  
**TARGET LONGITUDE (NAD 83)**  
WEST 108.238758 DEG.  
**TARGET NORTHING (NAD 27)**  
628734  
**TARGET EASTING (NAD 27)**  
1227747

**NOTES**

1. GPS OPERATOR JOHN RICHARDSON OBSERVED A PDOP OF 1.5.
2. ALL GPS OBSERVATIONS ARE IN COMPLIANCE WITH COGCC RULE No.215.

GLO BC

**17**

GLO BC

N 01°33'39" E 2637.29'

N 01°47'59" E 2639.19'

S 88°22'21" E 2637.67'

S 88°22'21" E 2637.67'

AC  
PLS 37065

AC  
PLS 37065

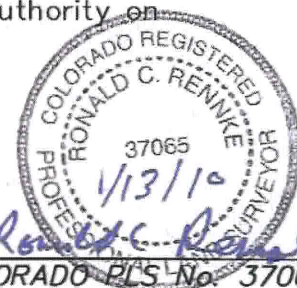


**SURVEYOR'S STATEMENT**

I, Ronald C. Rennke, an employee and agent for D. R. Griffin & Associates, Inc. state the plat hereon is a correct representation of a survey made under my authority on December 14, 2009 for the CASCADE CREEK 697-17-14.

**LEGEND**

- BOTTOM HOLE LOCATION
- ⊗ TARGET LOCATION
- FOUND MONUMENT
- L DENOTES 90° TIE



CC 609-14 PAD



(307) 362-5028

**RIFFIN & ASSOCIATES, INC.**  
1414 ELK ST., ROCK SPRINGS, WY 82901

**PLAT FOR BOTTOM HOLE LOCATION IN  
THE NW $\frac{1}{4}$  OF NE $\frac{1}{4}$  SECTION 17 FOR  
OXY USA WTP LP**

DRAWN: 1/11/10 - DEH

SCALE: 1" = 1000'

REVISED: N/A

JOB No. 10841

EXHIBIT 1

**967' F/NL & 1403' F/EL, SECTION 17  
T. 6 S., R. 97 W., 6th P.M.,  
GARFIELD COUNTY, COLORADO**