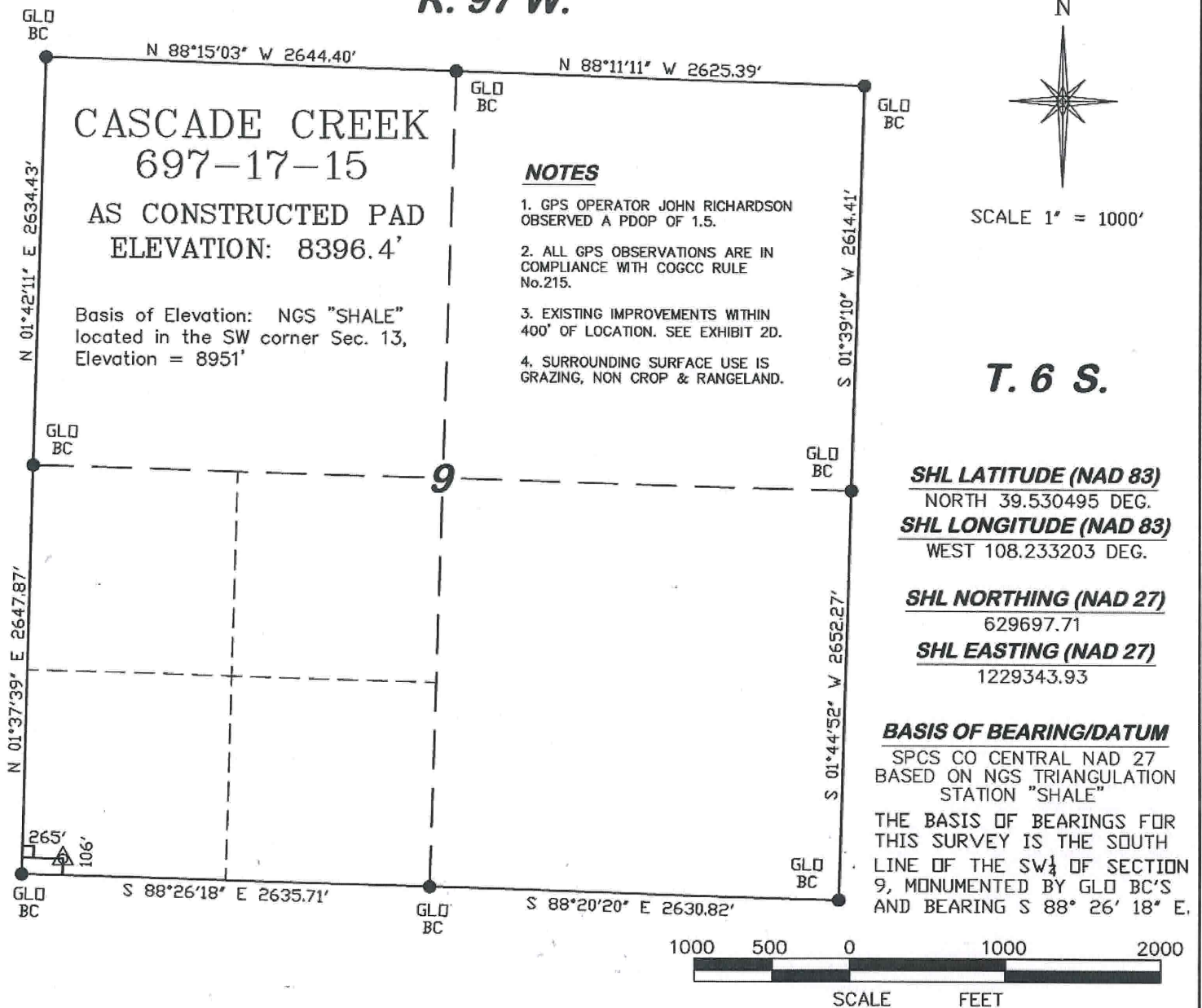


R. 97 W.

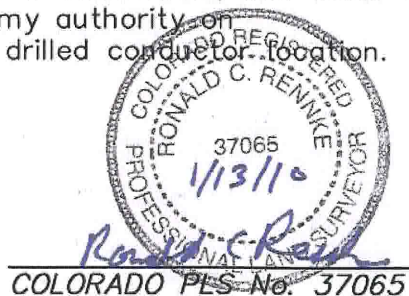


SURVEYOR'S STATEMENT

I, Ronald C. Rennke, an employee and agent for D. R. Griffin & Associates, Inc. state the plat hereon is a correct representation of a survey made under my authority on December 14, 2009 for the CASCADE CREEK 697-17-15 as drilled conductor location.

LEGEND

- △ AS DRILLED CONDUCTOR LOCATION
- FOUND MONUMENT
- └ DENOTES 90° TIE



CC 609-14 PAD



(307) 362-5028

RIFFIN & ASSOCIATES, INC.
1414 ELK ST., ROCK SPRINGS, WY 82901

DRAWN: 1/11/10 - DEH

SCALE: 1" = 1000'

REVISED: N/A

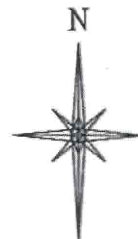
JOB No. 10841

EXHIBIT 1

**PLAT OF AS-DRILLED CONDUCTOR IN
THE SW1/4 OF SW1/4 SECTION 9 FOR
OXY USA WTP LP**

**106' F/SL & 265' F/WL, SECTION 9
T. 6 S., R. 97 W., 6th P.M.,
GARFIELD COUNTY, COLORADO**

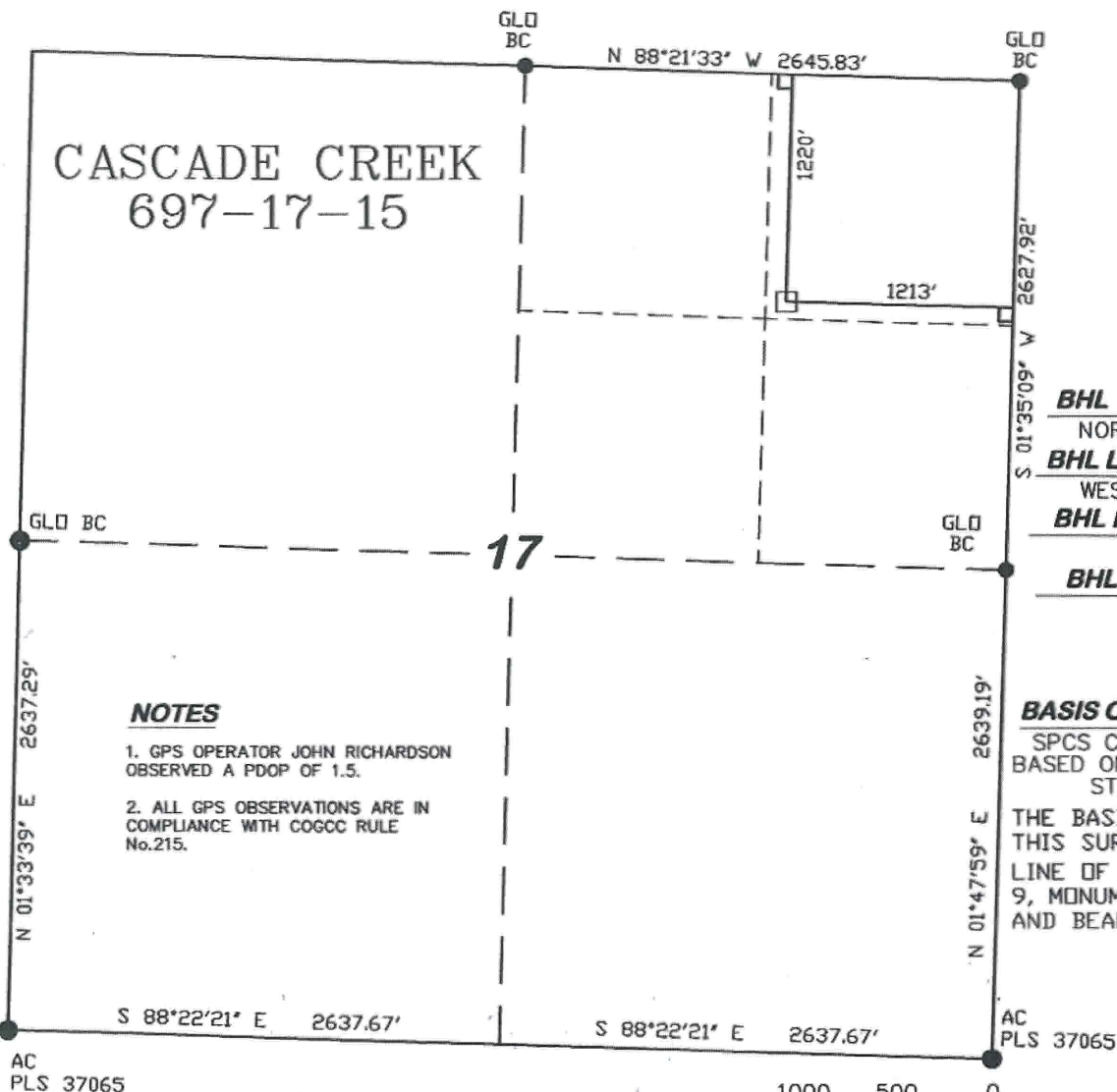
R. 97 W.



SCALE 1" = 1000'

T. 6 S.

CASCADE CREEK
697-17-15



NOTES

1. GPS OPERATOR JOHN RICHARDSON OBSERVED A PDOP OF 1.5.
2. ALL GPS OBSERVATIONS ARE IN COMPLIANCE WITH COGCC RULE No.215.

BHL LATITUDE (NAD 83)

NORTH 39.526848 DEG.

BHL LONGITUDE (NAD 83)

WEST 108.238431 DEG.

BHL NORTHING (NAD 27)

628414

BHL EASTING (NAD 27)

1227830

BASIS OF BEARING/DATUM

SPCS CO CENTRAL NAD 27
BASED ON NGS TRIANGULATION
STATION "SHALE"

THE BASIS OF BEARINGS FOR
THIS SURVEY IS THE SOUTH
LINE OF THE SW $\frac{1}{4}$ OF SECTION
9, MONUMENTED BY GLO BC'S
AND BEARING S 88° 26' 18" E.



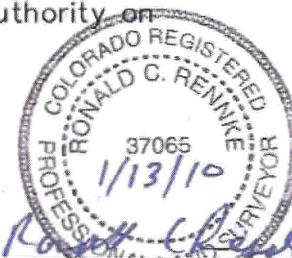
SURVEYOR'S STATEMENT

I, Ronald C. Rennke, an employee and agent for D. R. Griffin & Associates, Inc. state the plat hereon is a correct representation of a survey made under my authority on December 14, 2009 for the CASCADE CREEK 697-17-15.

LEGEND

- BOTTOM HOLE LOCATION
- FOUND MONUMENT
- L DENOTES 90° TIE

CC 609-14 PAD



COLORADO PLS No. 37065



DRG GRIFFIN & ASSOCIATES, INC.
(307) 382-5028 1414 ELK ST., ROCK SPRINGS, WY 82901

**PLAT FOR BOTTOM HOLE LOCATION IN
THE NE1/4 OF NE1/4 SECTION 17 FOR
OXY USA WTP LP**

DRAWN: 1/11/10 - DEH

SCALE: 1" = 1000'

REVISED: N/A

JOB No. 10841

EXHIBIT 1

**1220' F/NL & 1213' F/EL, SECTION 17
T. 6 S., R. 97 W., 6th P.M.,
GARFIELD COUNTY, COLORADO**