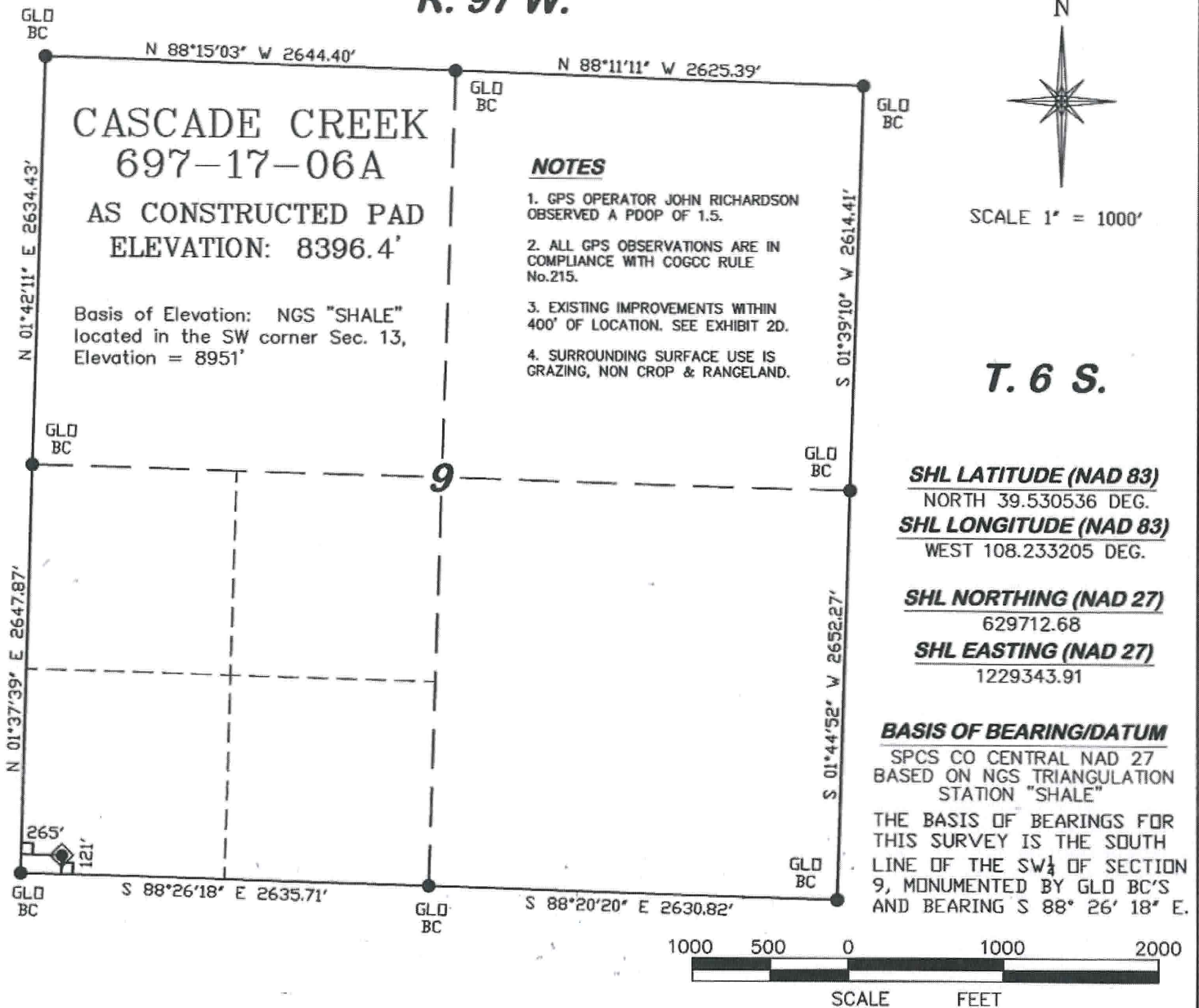


R. 97 W.



SURVEYOR'S STATEMENT

I, Ronald C. Renke, an employee and agent for D. R. Griffin & Associates, Inc. state the plat hereon is a correct representation of a survey made under my authority and staked on the ground as shown on December 14, 2009 for the CASCADE CREEK 697-17-06A.

LEGEND

- ◆ WELL LOCATION
- FOUND MONUMENT
- └ DENOTES 90° TIE

CC 609-14 PAD

COLORADO PLS No. 37065



DR. GRIFFIN & ASSOCIATES, INC.
(307) 362-5028 1414 ELK ST., ROCK SPRINGS, WY 82901

**PLAT FOR DRILLING LOCATION IN THE
SW1/4 OF SW1/4 SECTION 9 FOR
OXY USA WTP LP**

**121' F/SL & 265' F/WL, SECTION 9
T. 6 S., R. 97 W., 6th P.M.,
GARFIELD COUNTY, COLORADO**

DRAWN: 1/11/10 - DEH

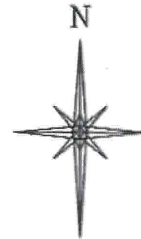
SCALE: 1" = 1000'

REVISED: N/A

JOB No. 10841

EXHIBIT 1

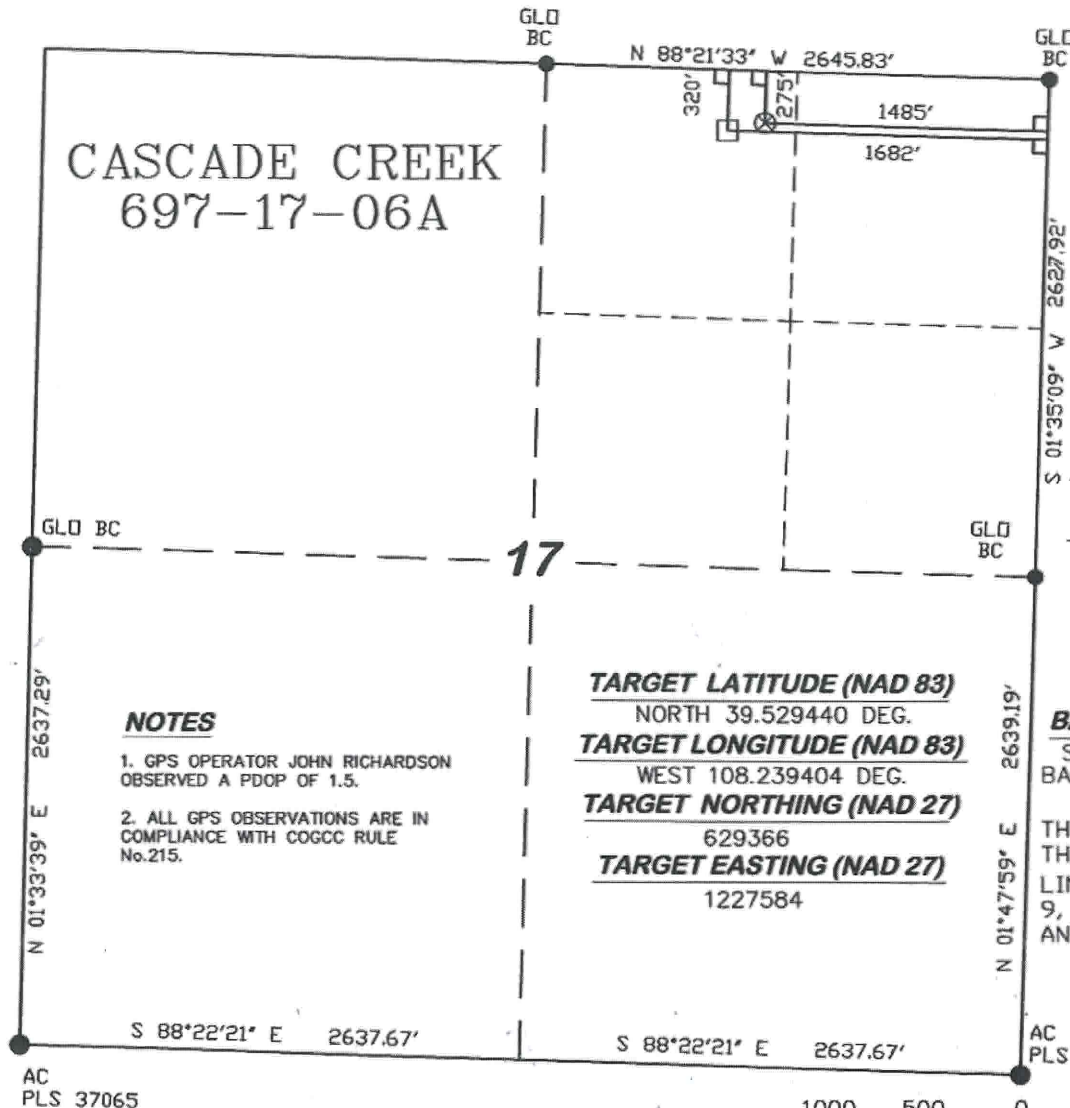
R. 97 W.



SCALE 1" = 1000'

T. 6 S.

CASCADE CREEK
697-17-06A



NOTES

1. GPS OPERATOR JOHN RICHARDSON OBSERVED A PDOP OF 1.5.
2. ALL GPS OBSERVATIONS ARE IN COMPLIANCE WITH COGCC RULE No.215.

TARGET LATITUDE (NAD 83)
NORTH 39.529440 DEG.
TARGET LONGITUDE (NAD 83)
WEST 108.239404 DEG.
TARGET NORTHING (NAD 27)
629366
TARGET EASTING (NAD 27)
1227584

BASIS OF BEARING/DATUM
SPCS CO CENTRAL NAD 27
BASED ON NGS TRIANGULATION
STATION "SHALE"

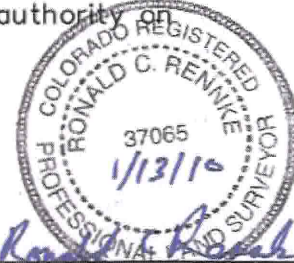
THE BASIS OF BEARINGS FOR
THIS SURVEY IS THE SOUTH
LINE OF THE SW 1/4 OF SECTION
9, MONUMENTED BY GLO BC'S
AND BEARING S 88° 26' 18" E.

SURVEYOR'S STATEMENT

I, Ronald C. Rennke, an employee and agent for D. R. Griffin & Associates, Inc. state the plat hereon is a correct representation of a survey made under my authority on December 14, 2009 for the CASCADE CREEK 697-17-06A.

LEGEND

- BOTTOM HOLE LOCATION
- ⊗ TARGET LOCATION
- FOUND MONUMENT
- L DENOTES 90° TIE



COLORADO PLS No. 37065

CC 609-14 PAD



DR GRIFFIN & ASSOCIATES, INC.
(307) 362-5028 1414 ELK ST., ROCK SPRINGS, WY 82901

**PLAT FOR BOTTOM HOLE LOCATION IN
THE NW1/4 OF NE1/4 SECTION 17 FOR
OXY USA WTP LP**

DRAWN: 1/11/10 - DEH

SCALE: 1" = 1000'

REVISED: N/A

JOB No. 10841

EXHIBIT 1

**320' F/NL & 1682' F/EL, SECTION 17
T. 6 S., R. 97 W., 6th P.M.,
GARFIELD COUNTY, COLORADO**