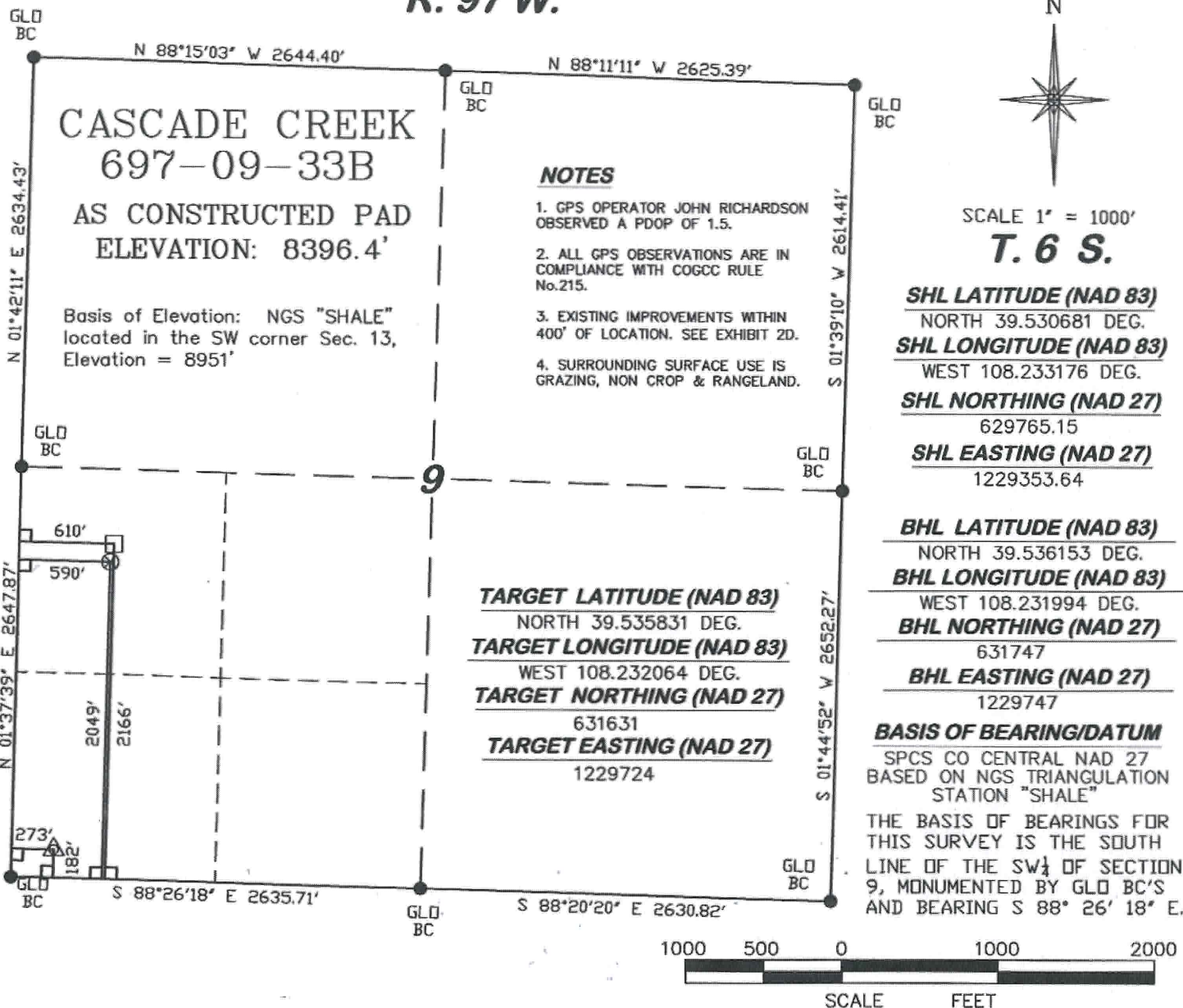


R. 97 W.

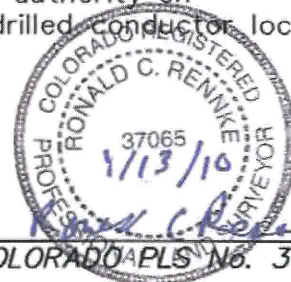


SURVEYOR'S STATEMENT

I, Ronald C. Rennke, an employee and agent for D. R. Griffin & Associates, Inc. state the plat hereon is a correct representation of a survey made under my authority on December 14, 2009 for the CASCADE CREEK 697-09-33B as drilled conductor location.

LEGEND

- △ AS DRILLED CONDUCTOR LOCATION
- BOTTOM HOLE LOCATION
- ⊗ TARGET LOCATION
- FOUND MONUMENT
- L DENOTES 90° TIE



CC 609-14 PAD

COLORADO APLS No. 37065



DRG RIFFIN & ASSOCIATES, INC.
1414 ELK ST., ROCK SPRINGS, WY 82901

(307) 362-5028

DRAWN: 1/11/10 - DEH

SCALE: 1" = 1000'

REVISED: N/A

JOB No. 10841

EXHIBIT 1

**PLAT OF AS-DRILLED CONDUCTOR IN
THE SW $\frac{1}{4}$ OF SW $\frac{1}{4}$ SECTION 9 FOR
OXY USA WTP LP**

**182' F/SL & 273' F/WL, SECTION 9
T. 6 S., R. 97 W., 6th P.M.,
GARFIELD COUNTY, COLORADO**