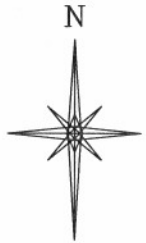


R. 98 W.



SCALE 1" = 1000'

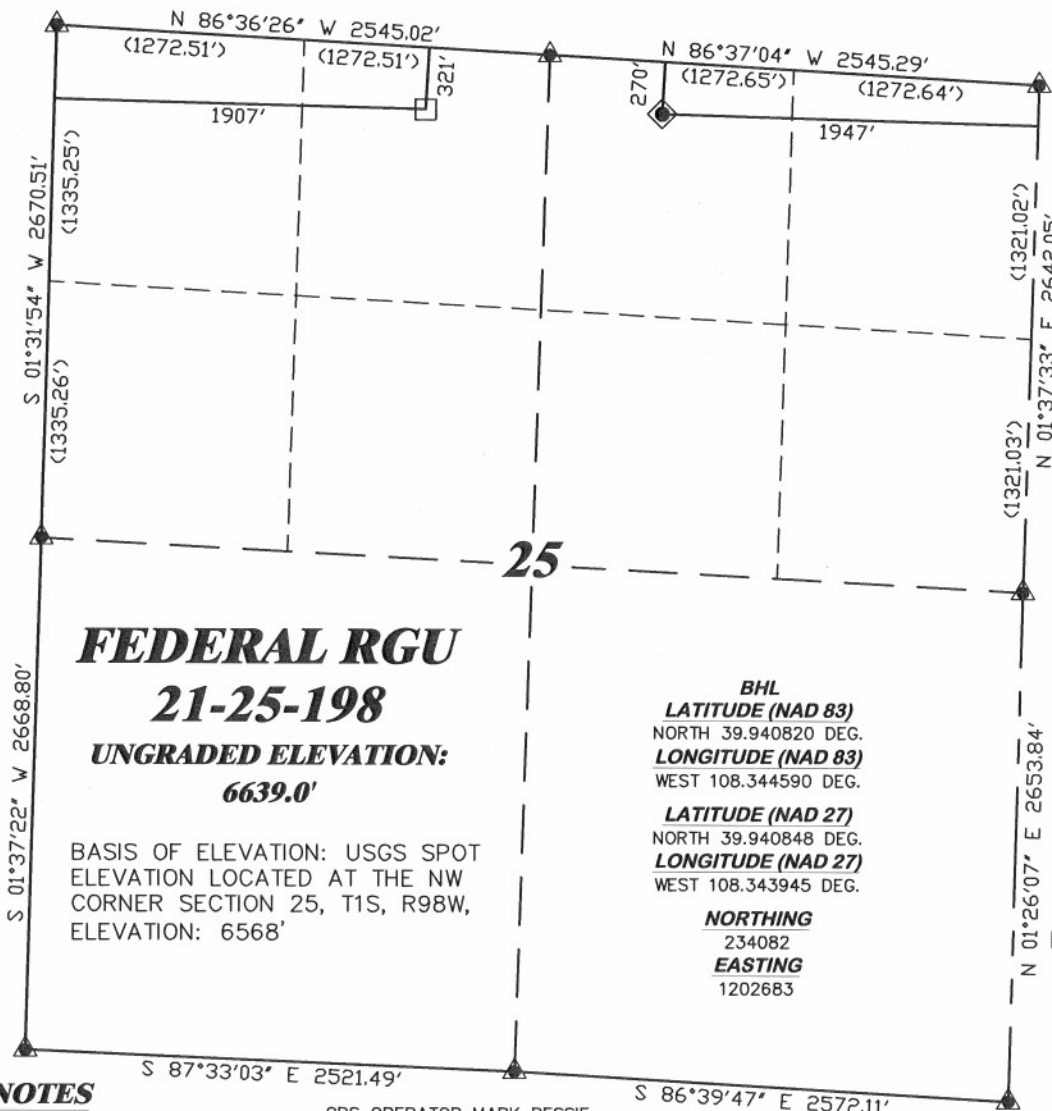
T. 1 S.

LATITUDE (NAD 83)
NORTH 39.940868 DEG.
LONGITUDE (NAD 83)
WEST 108.340190 DEG.

LATITUDE (NAD 27)
NORTH 39.940896 DEG.
LONGITUDE (NAD 27)
WEST 108.339546 DEG.

NORTHING
234059.95
EASTING
1203916.84

BASIS OF BEARING/DATUM
SPCS CO NORTH NAD 27
BASED ON NGS TRIANGULATION
STATION "BINER"



FEDERAL RGU
21-25-198
UNGRADED ELEVATION:
6639.0'

BASIS OF ELEVATION: USGS SPOT
ELEVATION LOCATED AT THE NW
CORNER SECTION 25, T1S, R98W,
ELEVATION: 6568'

BHL
LATITUDE (NAD 83)
NORTH 39.940820 DEG.
LONGITUDE (NAD 83)
WEST 108.344590 DEG.

LATITUDE (NAD 27)
NORTH 39.940848 DEG.
LONGITUDE (NAD 27)
WEST 108.343945 DEG.

NORTHING
234082
EASTING
1202683

NOTES

HIGH PLATEAU DESERT
NO EXISTING FEATURES WITHIN
400' RADIUS OF WELL SITE.

GPS OPERATOR MARK BESSIE
OBSERVED A PDOP OF 2.4.
ALL GPS OBSERVATIONS ARE IN
COMPLIANCE WITH COGCC RULE No.215.



SURVEYOR'S STATEMENT

I, CLEMENT R. WILLIAMS, OF ROCK SPRINGS, WYOMING, HEREBY STATE: THIS MAP WAS MADE FROM NOTES TAKEN DURING AN ACTUAL FIELD SURVEY DONE UNDER MY DIRECT SUPERVISION ON OCTOBER 8, 2008 AND THAT THIS PLAT CORRECTLY SHOWS THE LOCATION OF FEDERAL RGU 21-25-198 AS STAKED ON THE GROUND.

LEGEND

- ◆ WELL LOCATION
- BOTTOM HOLE LOC. (APPROX)
- FOUND MONUMENT
- ▲ PREVIOUSLY FOUND MONUMENT

FEDERAL RGU 31-25-198 PAD



RIFFIN & ASSOCIATES, INC.
1414 ELK ST., ROCK SPRINGS, WY 82901

(307) 362-5028

DRAWN: 1/27/09 - MMM

SCALE: 1" = 1000'

REVISED: 1/27/10 - MMM

DRG JOB No. 17148

REVISED BHL

EXHIBIT 1

PLAT OF DRILLING LOCATION
FOR
WILLIAMS PRODUCTION RMT COMPANY
270' F/NL & 1947' F/EL, SECTION 25,
T. 1 S., R. 98 W., 6th P.M.
RIO BLANCO COUNTY, COLORADO