

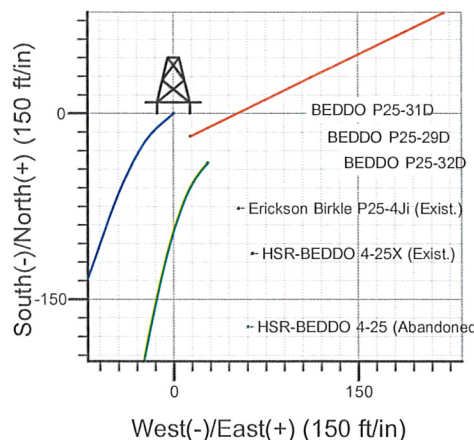
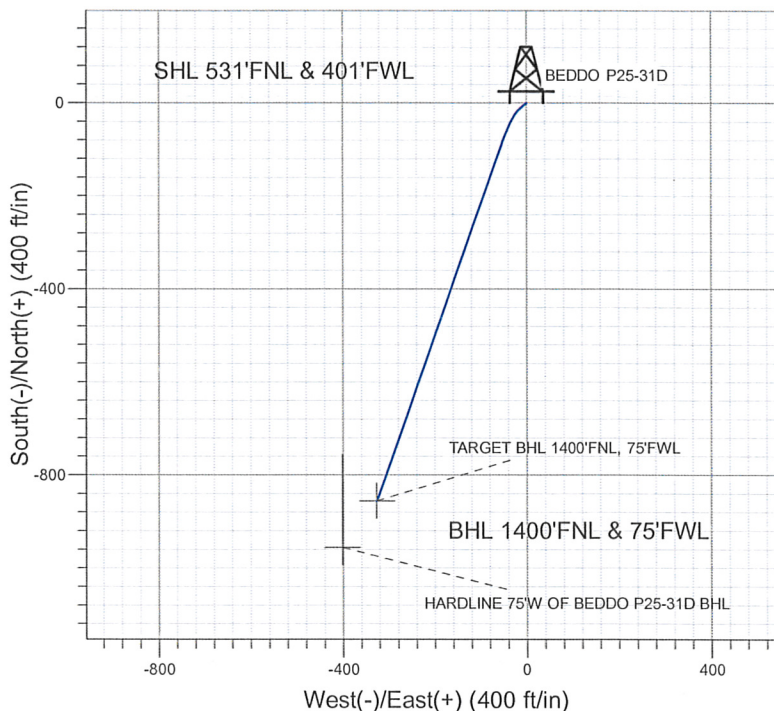
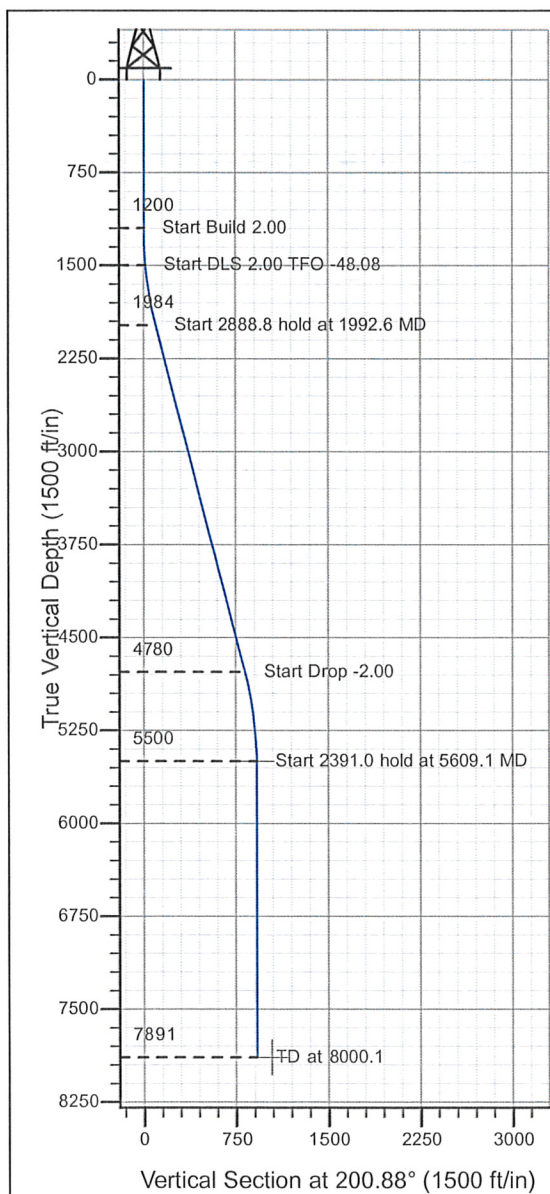
Well Name: BEDDO P25-31D

Surface Location: BEDDO P25-31D Sec.25-T3N-R67W
North American Datum 1983, US State Plane 1983, Colorado Northern Zone

Ground Elevation: 4799.0

+N/-S+E/-W	Northing	Easting	Latitude	Longitude	Slot
0.0	0.0	1317091.14	3182324.23	40° 12' 7.092 N 104° 50' 50.136 W	
Original Well Elev WELL @ 4812.0ft (Original Well Elev)					

NOBLE ENERGY INC WELD COUNTY CO



BEDDO P25-31D Sec.25-T3N-R67W
BEDDO P25-31D
Plan #2 (9-14-09)
17:46, October 06 2009



Azimuths to True North
Magnetic North: 9.16°

Magnetic Field
Strength: 53278.4snT
Dip Angle: 66.96°
Date: 2/26/2009
Model: IGRF200510

WELLBORE TARGET DETAILS (LAT/LONG)

Name	TVD	+N/-S	+E/-W	Latitude	Longitude	Shape
TARGET BHL 1400'FNL, 75'FWL	5500.0	-855.8	-326.5	40° 11' 58.635 N	104° 50' 54.343 W	Point
HARDLINE 75'W OF BEDDO P25-31D BHL	7891.0	-955.8	-401.5	40° 11' 57.647 N	104° 50' 55.310 W	Polygon

SECTION DETAILS

Sec	MD	Inc	Azi	TVD	+N/-S	+E/-W	DLeg	TFace	VSec	Target
1	0.0	0.00	0.00	0.0	0.0	0.0	0.00	0.00	0.0	
2	1200.0	0.00	0.00	1200.0	0.0	0.0	0.00	0.00	0.0	
3	1500.0	6.00	230.00	1499.5	-10.1	-12.0	2.00	230.00	13.7	
4	1992.6	14.55	199.56	1984.0	-85.1	-52.6	2.00	-48.08	98.3	
5	4881.4	14.55	199.56	4780.1	-769.2	-295.7	0.00	0.00	824.1	
6	5609.1	0.00	0.00	5500.0	-855.8	-326.5	2.00	180.00	916.0	TARGET BHL 1400'FNL, 75'FWL
7	8000.1	0.00	0.00	7891.0	-855.8	-326.5	0.00	0.00	916.0	



Directional

NOBLE ENERGY INC WELD COUNTY CO

SEC.25-T3N-R67W

BEDDO P25-31D Sec.25-T3N-R67W

BEDDO P25-31D

BEDDO P25-31D

Plan: Plan #2 (9-14-09)

Standard Planning Report

06 October, 2009



Database:	EDM den0-adp01 Server Data	Local Co-ordinate Reference:	Well BEDDO P25-31D
Company:	NOBLE ENERGY INC WELD COUNTY CO	TVD Reference:	WELL @ 4812.0ft (Original Well Elev)
Project:	SEC.25-T3N-R67W	MD Reference:	WELL @ 4812.0ft (Original Well Elev)
Site:	BEDDO P25-31D Sec.25-T3N-R67W	North Reference:	True
Well:	BEDDO P25-31D	Survey Calculation Method:	Minimum Curvature
Wellbore:	BEDDO P25-31D		
Design:	Plan #2 (9-14-09)		

Project	SEC.25-T3N-R67W, Weld County, Colorado		
Map System:	US State Plane 1983	System Datum:	Mean Sea Level
Geo Datum:	North American Datum 1983		Using Well Reference Point
Map Zone:	Colorado Northern Zone		Using geodetic scale factor

Site	BEDDO P25-31D Sec.25-T3N-R67W				
Site Position:		Northing:	1,317,051.27 ft	Latitude:	40° 12' 6.696 N
From:	Lat/Long	Easting:	3,182,349.67 ft	Longitude:	104° 50' 49.812 W
Position Uncertainty:	0.0 ft	Slot Radius:	"	Grid Convergence:	0.42 °

Well	BEDDO P25-31D					
Well Position	+N/-S	40.1 ft	Northing:	1,317,091.14 ft	Latitude:	40° 12' 7.092 N
	+E/-W	-25.1 ft	Easting:	3,182,324.23 ft	Longitude:	104° 50' 50.136 W
Position Uncertainty		0.0 ft	Wellhead Elevation:	ft	Ground Level:	4,799.0 ft

Wellbore	BEDDO P25-31D				
Magnetics	Model Name	Sample Date	Declination (°)	Dip Angle (°)	Field Strength (nT)
	IGRF200510	2/26/2009	9.17	66.96	53,278

Design	Plan #2 (9-14-09)			
Audit Notes:				
Version:	Phase:	PROTOTYPE	Tie On Depth:	0.0
Vertical Section:	Depth From (TVD) (ft)	+N/-S (ft)	+E/-W (ft)	Direction (°)
	0.0	0.0	0.0	200.88

Plan Sections										
Measured Depth (ft)	Inclination (°)	Azimuth (°)	Vertical Depth (ft)	+N/-S (ft)	+E/-W (ft)	Dogleg Rate (°/100ft)	Build Rate (°/100ft)	Turn Rate (°/100ft)	TFO (°)	Target
0.0	0.00	0.00	0.0	0.0	0.0	0.00	0.00	0.00	0.00	
1,200.0	0.00	0.00	1,200.0	0.0	0.0	0.00	0.00	0.00	0.00	
1,500.0	6.00	230.00	1,499.5	-10.1	-12.0	2.00	2.00	0.00	230.00	
1,992.6	14.55	199.56	1,984.0	-85.1	-52.6	2.00	1.74	-6.18	-48.08	
4,881.4	14.55	199.56	4,780.1	-769.2	-295.7	0.00	0.00	0.00	0.00	
5,609.1	0.00	0.00	5,500.0	-855.8	-326.5	2.00	-2.00	0.00	180.00	TARGET BHL 140C
8,000.1	0.00	0.00	7,891.0	-855.8	-326.5	0.00	0.00	0.00	0.00	

Database:	EDM den0-adp01 Server Data	Local Co-ordinate Reference:	Well BEDDO P25-31D
Company:	NOBLE ENERGY INC WELD COUNTY CO	TVD Reference:	WELL @ 4812.0ft (Original Well Elev)
Project:	SEC.25-T3N-R67W	MD Reference:	WELL @ 4812.0ft (Original Well Elev)
Site:	BEDDO P25-31D Sec.25-T3N-R67W	North Reference:	True
Well:	BEDDO P25-31D	Survey Calculation Method:	Minimum Curvature
Wellbore:	BEDDO P25-31D		
Design:	Plan #2 (9-14-09)		

Planned Survey

Measured Depth (ft)	Inclination (°)	Azimuth (°)	Vertical Depth (ft)	+N/-S (ft)	+E/-W (ft)	Vertical Section (ft)	Dogleg Rate (°/100ft)	Build Rate (°/100ft)	Turn Rate (°/100ft)
0.0	0.00	0.00	0.0	0.0	0.0	0.0	0.00	0.00	0.00
40.0	0.00	0.00	40.0	0.0	0.0	0.0	0.00	0.00	0.00
80.0	0.00	0.00	80.0	0.0	0.0	0.0	0.00	0.00	0.00
120.0	0.00	0.00	120.0	0.0	0.0	0.0	0.00	0.00	0.00
160.0	0.00	0.00	160.0	0.0	0.0	0.0	0.00	0.00	0.00
200.0	0.00	0.00	200.0	0.0	0.0	0.0	0.00	0.00	0.00
240.0	0.00	0.00	240.0	0.0	0.0	0.0	0.00	0.00	0.00
280.0	0.00	0.00	280.0	0.0	0.0	0.0	0.00	0.00	0.00
320.0	0.00	0.00	320.0	0.0	0.0	0.0	0.00	0.00	0.00
360.0	0.00	0.00	360.0	0.0	0.0	0.0	0.00	0.00	0.00
400.0	0.00	0.00	400.0	0.0	0.0	0.0	0.00	0.00	0.00
440.0	0.00	0.00	440.0	0.0	0.0	0.0	0.00	0.00	0.00
480.0	0.00	0.00	480.0	0.0	0.0	0.0	0.00	0.00	0.00
520.0	0.00	0.00	520.0	0.0	0.0	0.0	0.00	0.00	0.00
560.0	0.00	0.00	560.0	0.0	0.0	0.0	0.00	0.00	0.00
600.0	0.00	0.00	600.0	0.0	0.0	0.0	0.00	0.00	0.00
640.0	0.00	0.00	640.0	0.0	0.0	0.0	0.00	0.00	0.00
680.0	0.00	0.00	680.0	0.0	0.0	0.0	0.00	0.00	0.00
720.0	0.00	0.00	720.0	0.0	0.0	0.0	0.00	0.00	0.00
760.0	0.00	0.00	760.0	0.0	0.0	0.0	0.00	0.00	0.00
800.0	0.00	0.00	800.0	0.0	0.0	0.0	0.00	0.00	0.00
840.0	0.00	0.00	840.0	0.0	0.0	0.0	0.00	0.00	0.00
880.0	0.00	0.00	880.0	0.0	0.0	0.0	0.00	0.00	0.00
920.0	0.00	0.00	920.0	0.0	0.0	0.0	0.00	0.00	0.00
960.0	0.00	0.00	960.0	0.0	0.0	0.0	0.00	0.00	0.00
1,000.0	0.00	0.00	1,000.0	0.0	0.0	0.0	0.00	0.00	0.00
1,040.0	0.00	0.00	1,040.0	0.0	0.0	0.0	0.00	0.00	0.00
1,080.0	0.00	0.00	1,080.0	0.0	0.0	0.0	0.00	0.00	0.00
1,120.0	0.00	0.00	1,120.0	0.0	0.0	0.0	0.00	0.00	0.00
1,160.0	0.00	0.00	1,160.0	0.0	0.0	0.0	0.00	0.00	0.00
1,200.0	0.00	0.00	1,200.0	0.0	0.0	0.0	0.00	0.00	0.00
1,240.0	0.80	230.00	1,240.0	-0.2	-0.2	0.2	2.00	2.00	0.00
1,280.0	1.60	230.00	1,280.0	-0.7	-0.9	1.0	2.00	2.00	0.00
1,320.0	2.40	230.00	1,320.0	-1.6	-1.9	2.2	2.00	2.00	0.00
1,360.0	3.20	230.00	1,359.9	-2.9	-3.4	3.9	2.00	2.00	0.00
1,400.0	4.00	230.00	1,399.8	-4.5	-5.3	6.1	2.00	2.00	0.00
1,440.0	4.80	230.00	1,439.7	-6.5	-7.7	8.8	2.00	2.00	0.00
1,480.0	5.60	230.00	1,479.6	-8.8	-10.5	11.9	2.00	2.00	0.00
1,500.0	6.00	230.00	1,499.5	-10.1	-12.0	13.7	2.00	2.00	0.00
1,520.0	6.27	227.28	1,519.3	-11.5	-13.6	15.6	2.00	1.37	-13.62
1,560.0	6.86	222.50	1,559.1	-14.7	-16.8	19.8	2.00	1.46	-11.93
1,600.0	7.49	218.50	1,598.8	-18.5	-20.1	24.5	2.00	1.56	-10.00
1,640.0	8.14	215.13	1,638.4	-22.9	-23.3	29.7	2.00	1.64	-8.44
1,680.0	8.82	212.26	1,678.0	-27.8	-26.6	35.5	2.00	1.70	-7.17
1,720.0	9.52	209.81	1,717.4	-33.3	-29.9	41.7	2.00	1.75	-6.14
1,760.0	10.23	207.69	1,756.8	-39.3	-33.2	48.5	2.00	1.78	-5.30
1,800.0	10.96	205.84	1,796.2	-45.9	-36.5	55.8	2.00	1.81	-4.61
1,840.0	11.69	204.23	1,835.4	-53.0	-39.8	63.7	2.00	1.84	-4.04
1,880.0	12.43	202.80	1,874.5	-60.6	-43.1	72.0	2.00	1.86	-3.57
1,920.0	13.18	201.53	1,913.5	-68.8	-46.5	80.9	2.00	1.87	-3.17
1,960.0	13.94	200.40	1,952.4	-77.6	-49.8	90.3	2.00	1.89	-2.83
1,992.6	14.55	199.56	1,984.0	-85.1	-52.6	98.3	2.00	1.90	-2.57
2,000.0	14.55	199.56	1,991.2	-86.9	-53.2	100.2	0.00	0.00	0.00
2,040.0	14.55	199.56	2,029.9	-96.4	-56.6	110.2	0.00	0.00	0.00

Database:	EDM den0-adp01 Server Data	Local Co-ordinate Reference:	Well BEDDO P25-31D
Company:	NOBLE ENERGY INC WELD COUNTY CO	TVD Reference:	WELL @ 4812.0ft (Original Well Elev)
Project:	SEC.25-T3N-R67W	MD Reference:	WELL @ 4812.0ft (Original Well Elev)
Site:	BEDDO P25-31D Sec.25-T3N-R67W	North Reference:	True
Well:	BEDDO P25-31D	Survey Calculation Method:	Minimum Curvature
Wellbore:	BEDDO P25-31D		
Design:	Plan #2 (9-14-09)		

Planned Survey

Measured Depth (ft)	Inclination (°)	Azimuth (°)	Vertical Depth (ft)	+N/-S (ft)	+E/-W (ft)	Vertical Section (ft)	Dogleg Rate (°/100ft)	Build Rate (°/100ft)	Turn Rate (°/100ft)
2,080.0	14.55	199.56	2,068.6	-105.8	-59.9	120.2	0.00	0.00	0.00
2,120.0	14.55	199.56	2,107.3	-115.3	-63.3	130.3	0.00	0.00	0.00
2,160.0	14.55	199.56	2,146.0	-124.8	-66.7	140.3	0.00	0.00	0.00
2,200.0	14.55	199.56	2,184.7	-134.3	-70.0	150.4	0.00	0.00	0.00
2,240.0	14.55	199.56	2,223.5	-143.7	-73.4	160.4	0.00	0.00	0.00
2,280.0	14.55	199.56	2,262.2	-153.2	-76.8	170.5	0.00	0.00	0.00
2,320.0	14.55	199.56	2,300.9	-162.7	-80.1	180.5	0.00	0.00	0.00
2,360.0	14.55	199.56	2,339.6	-172.1	-83.5	190.6	0.00	0.00	0.00
2,400.0	14.55	199.56	2,378.3	-181.6	-86.9	200.6	0.00	0.00	0.00
2,440.0	14.55	199.56	2,417.0	-191.1	-90.2	210.7	0.00	0.00	0.00
2,480.0	14.55	199.56	2,455.8	-200.6	-93.6	220.7	0.00	0.00	0.00
2,520.0	14.55	199.56	2,494.5	-210.0	-97.0	230.8	0.00	0.00	0.00
2,560.0	14.55	199.56	2,533.2	-219.5	-100.3	240.8	0.00	0.00	0.00
2,600.0	14.55	199.56	2,571.9	-229.0	-103.7	250.9	0.00	0.00	0.00
2,640.0	14.55	199.56	2,610.6	-238.4	-107.1	260.9	0.00	0.00	0.00
2,680.0	14.55	199.56	2,649.3	-247.9	-110.4	271.0	0.00	0.00	0.00
2,720.0	14.55	199.56	2,688.0	-257.4	-113.8	281.0	0.00	0.00	0.00
2,760.0	14.55	199.56	2,726.8	-266.9	-117.2	291.1	0.00	0.00	0.00
2,800.0	14.55	199.56	2,765.5	-276.3	-120.5	301.1	0.00	0.00	0.00
2,840.0	14.55	199.56	2,804.2	-285.8	-123.9	311.2	0.00	0.00	0.00
2,880.0	14.55	199.56	2,842.9	-295.3	-127.2	321.2	0.00	0.00	0.00
2,920.0	14.55	199.56	2,881.6	-304.7	-130.6	331.3	0.00	0.00	0.00
2,960.0	14.55	199.56	2,920.3	-314.2	-134.0	341.3	0.00	0.00	0.00
3,000.0	14.55	199.56	2,959.1	-323.7	-137.3	351.4	0.00	0.00	0.00
3,040.0	14.55	199.56	2,997.8	-333.2	-140.7	361.4	0.00	0.00	0.00
3,080.0	14.55	199.56	3,036.5	-342.6	-144.1	371.5	0.00	0.00	0.00
3,120.0	14.55	199.56	3,075.2	-352.1	-147.4	381.5	0.00	0.00	0.00
3,160.0	14.55	199.56	3,113.9	-361.6	-150.8	391.6	0.00	0.00	0.00
3,200.0	14.55	199.56	3,152.6	-371.1	-154.2	401.6	0.00	0.00	0.00
3,240.0	14.55	199.56	3,191.4	-380.5	-157.5	411.7	0.00	0.00	0.00
3,280.0	14.55	199.56	3,230.1	-390.0	-160.9	421.7	0.00	0.00	0.00
3,320.0	14.55	199.56	3,268.8	-399.5	-164.3	431.8	0.00	0.00	0.00
3,360.0	14.55	199.56	3,307.5	-408.9	-167.6	441.8	0.00	0.00	0.00
3,400.0	14.55	199.56	3,346.2	-418.4	-171.0	451.9	0.00	0.00	0.00
3,440.0	14.55	199.56	3,384.9	-427.9	-174.4	461.9	0.00	0.00	0.00
3,480.0	14.55	199.56	3,423.7	-437.4	-177.7	472.0	0.00	0.00	0.00
3,520.0	14.55	199.56	3,462.4	-446.8	-181.1	482.0	0.00	0.00	0.00
3,560.0	14.55	199.56	3,501.1	-456.3	-184.5	492.1	0.00	0.00	0.00
3,600.0	14.55	199.56	3,539.8	-465.8	-187.8	502.1	0.00	0.00	0.00
3,640.0	14.55	199.56	3,578.5	-475.2	-191.2	512.2	0.00	0.00	0.00
3,680.0	14.55	199.56	3,617.2	-484.7	-194.6	522.2	0.00	0.00	0.00
3,720.0	14.55	199.56	3,656.0	-494.2	-197.9	532.3	0.00	0.00	0.00
3,760.0	14.55	199.56	3,694.7	-503.7	-201.3	542.3	0.00	0.00	0.00
3,800.0	14.55	199.56	3,733.4	-513.1	-204.7	552.4	0.00	0.00	0.00
3,840.0	14.55	199.56	3,772.1	-522.6	-208.0	562.4	0.00	0.00	0.00
3,880.0	14.55	199.56	3,810.8	-532.1	-211.4	572.5	0.00	0.00	0.00
3,920.0	14.55	199.56	3,849.5	-541.5	-214.8	582.5	0.00	0.00	0.00
3,960.0	14.55	199.56	3,888.3	-551.0	-218.1	592.6	0.00	0.00	0.00
4,000.0	14.55	199.56	3,927.0	-560.5	-221.5	602.6	0.00	0.00	0.00
4,040.0	14.55	199.56	3,965.7	-570.0	-224.9	612.7	0.00	0.00	0.00
4,080.0	14.55	199.56	4,004.4	-579.4	-228.2	622.7	0.00	0.00	0.00
4,120.0	14.55	199.56	4,043.1	-588.9	-231.6	632.8	0.00	0.00	0.00
4,160.0	14.55	199.56	4,081.8	-598.4	-235.0	642.8	0.00	0.00	0.00
4,200.0	14.55	199.56	4,120.6	-607.8	-238.3	652.9	0.00	0.00	0.00

Database:	EDM den0-adp01 Server Data	Local Co-ordinate Reference:	Well BEDDO P25-31D
Company:	NOBLE ENERGY INC WELD COUNTY CO	TVD Reference:	WELL @ 4812.0ft (Original Well Elev)
Project:	SEC.25-T3N-R67W	MD Reference:	WELL @ 4812.0ft (Original Well Elev)
Site:	BEDDO P25-31D Sec.25-T3N-R67W	North Reference:	True
Well:	BEDDO P25-31D	Survey Calculation Method:	Minimum Curvature
Wellbore:	BEDDO P25-31D		
Design:	Plan #2 (9-14-09)		

Planned Survey

Measured Depth (ft)	Inclination (°)	Azimuth (°)	Vertical Depth (ft)	+N/-S (ft)	+E/-W (ft)	Vertical Section (ft)	Dogleg Rate (°/100ft)	Build Rate (°/100ft)	Turn Rate (°/100ft)
4,240.0	14.55	199.56	4,159.3	-617.3	-241.7	662.9	0.00	0.00	0.00
4,280.0	14.55	199.56	4,198.0	-626.8	-245.1	673.0	0.00	0.00	0.00
4,320.0	14.55	199.56	4,236.7	-636.3	-248.4	683.0	0.00	0.00	0.00
4,360.0	14.55	199.56	4,275.4	-645.7	-251.8	693.1	0.00	0.00	0.00
4,400.0	14.55	199.56	4,314.1	-655.2	-255.2	703.1	0.00	0.00	0.00
4,440.0	14.55	199.56	4,352.9	-664.7	-258.5	713.2	0.00	0.00	0.00
4,480.0	14.55	199.56	4,391.6	-674.1	-261.9	723.2	0.00	0.00	0.00
4,520.0	14.55	199.56	4,430.3	-683.6	-265.3	733.3	0.00	0.00	0.00
4,560.0	14.55	199.56	4,469.0	-693.1	-268.6	743.3	0.00	0.00	0.00
4,600.0	14.55	199.56	4,507.7	-702.6	-272.0	753.4	0.00	0.00	0.00
4,640.0	14.55	199.56	4,546.4	-712.0	-275.4	763.4	0.00	0.00	0.00
4,680.0	14.55	199.56	4,585.1	-721.5	-278.7	773.5	0.00	0.00	0.00
4,720.0	14.55	199.56	4,623.9	-731.0	-282.1	783.5	0.00	0.00	0.00
4,760.0	14.55	199.56	4,662.6	-740.4	-285.5	793.6	0.00	0.00	0.00
4,800.0	14.55	199.56	4,701.3	-749.9	-288.8	803.6	0.00	0.00	0.00
4,840.0	14.55	199.56	4,740.0	-759.4	-292.2	813.7	0.00	0.00	0.00
4,880.0	14.55	199.56	4,778.7	-768.9	-295.6	823.7	0.00	0.00	0.00
4,881.4	14.55	199.56	4,780.1	-769.2	-295.7	824.1	0.00	0.00	0.00
4,920.0	13.78	199.56	4,817.5	-778.1	-298.8	833.5	2.00	-2.00	0.00
4,960.0	12.98	199.56	4,856.4	-786.8	-301.9	842.8	2.00	-2.00	0.00
5,000.0	12.18	199.56	4,895.5	-795.0	-304.9	851.5	2.00	-2.00	0.00
5,040.0	11.38	199.56	4,934.6	-802.7	-307.6	859.6	2.00	-2.00	0.00
5,080.0	10.58	199.56	4,973.9	-809.9	-310.1	867.3	2.00	-2.00	0.00
5,120.0	9.78	199.56	5,013.3	-816.6	-312.5	874.3	2.00	-2.00	0.00
5,160.0	8.98	199.56	5,052.7	-822.7	-314.7	880.8	2.00	-2.00	0.00
5,200.0	8.18	199.56	5,092.3	-828.3	-316.7	886.8	2.00	-2.00	0.00
5,240.0	7.38	199.56	5,131.9	-833.4	-318.5	892.2	2.00	-2.00	0.00
5,280.0	6.58	199.56	5,171.6	-838.0	-320.1	897.1	2.00	-2.00	0.00
5,320.0	5.78	199.56	5,211.4	-842.1	-321.6	901.4	2.00	-2.00	0.00
5,360.0	4.98	199.56	5,251.2	-845.6	-322.8	905.1	2.00	-2.00	0.00
5,400.0	4.18	199.56	5,291.1	-848.6	-323.9	908.3	2.00	-2.00	0.00
5,440.0	3.38	199.56	5,331.0	-851.1	-324.8	911.0	2.00	-2.00	0.00
5,480.0	2.58	199.56	5,370.9	-853.1	-325.5	913.1	2.00	-2.00	0.00
5,520.0	1.78	199.56	5,410.9	-854.5	-326.0	914.6	2.00	-2.00	0.00
5,560.0	0.98	199.56	5,450.9	-855.4	-326.3	915.5	2.00	-2.00	0.00
5,600.0	0.18	199.56	5,490.9	-855.8	-326.5	916.0	2.00	-2.00	0.00
5,609.1	0.00	0.00	5,500.0	-855.8	-326.5	916.0	2.00	-2.00	0.00
TARGET BHL 1400'FNL, 75'FWL									
5,640.0	0.00	0.00	5,530.9	-855.8	-326.5	916.0	0.00	0.00	0.00
5,680.0	0.00	0.00	5,570.9	-855.8	-326.5	916.0	0.00	0.00	0.00
5,720.0	0.00	0.00	5,610.9	-855.8	-326.5	916.0	0.00	0.00	0.00
5,760.0	0.00	0.00	5,650.9	-855.8	-326.5	916.0	0.00	0.00	0.00
5,800.0	0.00	0.00	5,690.9	-855.8	-326.5	916.0	0.00	0.00	0.00
5,840.0	0.00	0.00	5,730.9	-855.8	-326.5	916.0	0.00	0.00	0.00
5,880.0	0.00	0.00	5,770.9	-855.8	-326.5	916.0	0.00	0.00	0.00
5,920.0	0.00	0.00	5,810.9	-855.8	-326.5	916.0	0.00	0.00	0.00
5,960.0	0.00	0.00	5,850.9	-855.8	-326.5	916.0	0.00	0.00	0.00
6,000.0	0.00	0.00	5,890.9	-855.8	-326.5	916.0	0.00	0.00	0.00
6,040.0	0.00	0.00	5,930.9	-855.8	-326.5	916.0	0.00	0.00	0.00
6,080.0	0.00	0.00	5,970.9	-855.8	-326.5	916.0	0.00	0.00	0.00
6,120.0	0.00	0.00	6,010.9	-855.8	-326.5	916.0	0.00	0.00	0.00
6,160.0	0.00	0.00	6,050.9	-855.8	-326.5	916.0	0.00	0.00	0.00
6,200.0	0.00	0.00	6,090.9	-855.8	-326.5	916.0	0.00	0.00	0.00

Database: EDM den0-adp01 Server Data
 Company: NOBLE ENERGY INC WELD COUNTY CO
 Project: SEC.25-T3N-R67W
 Site: BEDDO P25-31D Sec.25-T3N-R67W
 Well: BEDDO P25-31D
 Wellbore: BEDDO P25-31D
 Design: Plan #2 (9-14-09)

Local Co-ordinate Reference: Well BEDDO P25-31D
 TVD Reference: WELL @ 4812.0ft (Original Well Elev)
 MD Reference: WELL @ 4812.0ft (Original Well Elev)
 North Reference: True
 Survey Calculation Method: Minimum Curvature

Planned Survey

Measured Depth (ft)	Inclination (°)	Azimuth (°)	Vertical Depth (ft)	+N/-S (ft)	+E/-W (ft)	Vertical Section (ft)	Dogleg Rate (°/100ft)	Build Rate (°/100ft)	Turn Rate (°/100ft)
6,240.0	0.00	0.00	6,130.9	-855.8	-326.5	916.0	0.00	0.00	0.00
6,280.0	0.00	0.00	6,170.9	-855.8	-326.5	916.0	0.00	0.00	0.00
6,320.0	0.00	0.00	6,210.9	-855.8	-326.5	916.0	0.00	0.00	0.00
6,360.0	0.00	0.00	6,250.9	-855.8	-326.5	916.0	0.00	0.00	0.00
6,400.0	0.00	0.00	6,290.9	-855.8	-326.5	916.0	0.00	0.00	0.00
6,440.0	0.00	0.00	6,330.9	-855.8	-326.5	916.0	0.00	0.00	0.00
6,480.0	0.00	0.00	6,370.9	-855.8	-326.5	916.0	0.00	0.00	0.00
6,520.0	0.00	0.00	6,410.9	-855.8	-326.5	916.0	0.00	0.00	0.00
6,560.0	0.00	0.00	6,450.9	-855.8	-326.5	916.0	0.00	0.00	0.00
6,600.0	0.00	0.00	6,490.9	-855.8	-326.5	916.0	0.00	0.00	0.00
6,640.0	0.00	0.00	6,530.9	-855.8	-326.5	916.0	0.00	0.00	0.00
6,680.0	0.00	0.00	6,570.9	-855.8	-326.5	916.0	0.00	0.00	0.00
6,720.0	0.00	0.00	6,610.9	-855.8	-326.5	916.0	0.00	0.00	0.00
6,760.0	0.00	0.00	6,650.9	-855.8	-326.5	916.0	0.00	0.00	0.00
6,800.0	0.00	0.00	6,690.9	-855.8	-326.5	916.0	0.00	0.00	0.00
6,840.0	0.00	0.00	6,730.9	-855.8	-326.5	916.0	0.00	0.00	0.00
6,880.0	0.00	0.00	6,770.9	-855.8	-326.5	916.0	0.00	0.00	0.00
6,920.0	0.00	0.00	6,810.9	-855.8	-326.5	916.0	0.00	0.00	0.00
6,960.0	0.00	0.00	6,850.9	-855.8	-326.5	916.0	0.00	0.00	0.00
7,000.0	0.00	0.00	6,890.9	-855.8	-326.5	916.0	0.00	0.00	0.00
7,040.0	0.00	0.00	6,930.9	-855.8	-326.5	916.0	0.00	0.00	0.00
7,080.0	0.00	0.00	6,970.9	-855.8	-326.5	916.0	0.00	0.00	0.00
7,115.1	0.00	0.00	7,006.0	-855.8	-326.5	916.0	0.00	0.00	0.00
NIORARA									
7,120.0	0.00	0.00	7,010.9	-855.8	-326.5	916.0	0.00	0.00	0.00
7,160.0	0.00	0.00	7,050.9	-855.8	-326.5	916.0	0.00	0.00	0.00
7,200.0	0.00	0.00	7,090.9	-855.8	-326.5	916.0	0.00	0.00	0.00
7,240.0	0.00	0.00	7,130.9	-855.8	-326.5	916.0	0.00	0.00	0.00
7,280.0	0.00	0.00	7,170.9	-855.8	-326.5	916.0	0.00	0.00	0.00
7,320.0	0.00	0.00	7,210.9	-855.8	-326.5	916.0	0.00	0.00	0.00
7,360.0	0.00	0.00	7,250.9	-855.8	-326.5	916.0	0.00	0.00	0.00
7,400.0	0.00	0.00	7,290.9	-855.8	-326.5	916.0	0.00	0.00	0.00
7,405.1	0.00	0.00	7,296.0	-855.8	-326.5	916.0	0.00	0.00	0.00
CODELL									
7,440.0	0.00	0.00	7,330.9	-855.8	-326.5	916.0	0.00	0.00	0.00
7,480.0	0.00	0.00	7,370.9	-855.8	-326.5	916.0	0.00	0.00	0.00
7,520.0	0.00	0.00	7,410.9	-855.8	-326.5	916.0	0.00	0.00	0.00
7,560.0	0.00	0.00	7,450.9	-855.8	-326.5	916.0	0.00	0.00	0.00
7,600.0	0.00	0.00	7,490.9	-855.8	-326.5	916.0	0.00	0.00	0.00
7,640.0	0.00	0.00	7,530.9	-855.8	-326.5	916.0	0.00	0.00	0.00
7,680.0	0.00	0.00	7,570.9	-855.8	-326.5	916.0	0.00	0.00	0.00
7,720.0	0.00	0.00	7,610.9	-855.8	-326.5	916.0	0.00	0.00	0.00
7,760.0	0.00	0.00	7,650.9	-855.8	-326.5	916.0	0.00	0.00	0.00
7,800.0	0.00	0.00	7,690.9	-855.8	-326.5	916.0	0.00	0.00	0.00
7,840.0	0.00	0.00	7,730.9	-855.8	-326.5	916.0	0.00	0.00	0.00
7,850.1	0.00	0.00	7,741.0	-855.8	-326.5	916.0	0.00	0.00	0.00
J SAND									
7,880.0	0.00	0.00	7,770.9	-855.8	-326.5	916.0	0.00	0.00	0.00
7,920.0	0.00	0.00	7,810.9	-855.8	-326.5	916.0	0.00	0.00	0.00
7,960.0	0.00	0.00	7,850.9	-855.8	-326.5	916.0	0.00	0.00	0.00
8,000.0	0.00	0.00	7,890.9	-855.8	-326.5	916.0	0.00	0.00	0.00
8,000.1	0.00	0.00	7,891.0	-855.8	-326.5	916.0	0.00	0.00	0.00
HARDLINE 75'W OF BEDDO P25-31D BHL									

Database:	EDM den0-adp01 Server Data	Local Co-ordinate Reference:	Well BEDDO P25-31D
Company:	NOBLE ENERGY INC WELD COUNTY CO	TVD Reference:	WELL @ 4812.0ft (Original Well Elev)
Project:	SEC.25-T3N-R67W	MD Reference:	WELL @ 4812.0ft (Original Well Elev)
Site:	BEDDO P25-31D Sec.25-T3N-R67W	North Reference:	True
Well:	BEDDO P25-31D	Survey Calculation Method:	Minimum Curvature
Wellbore:	BEDDO P25-31D		
Design:	Plan #2 (9-14-09)		

Targets									
Target Name	Dip Angle	Dip Dir.	TVD	+N/-S	+E/-W	Northing	Easting	Latitude	Longitude
- hit/miss target	(°)	(°)	(ft)	(ft)	(ft)	(ft)	(ft)		
- Shape									
TARGET BHL 1400'F	0.00	0.00	5,500.0	-855.8	-326.5	1,316,232.98	3,182,004.10	40° 11' 58.635 N	104° 50' 54.343 W
- plan hits target center									
- Point									
HARDLINE 75'W OF I	0.00	0.00	7,891.0	-955.8	-401.5	1,316,132.46	3,181,929.80	40° 11' 57.647 N	104° 50' 55.310 W
- plan misses target center by 125.0ft at 8000.1ft MD (7891.0 TVD, -855.8 N, -326.5 E)									
- Polygon									
Point 1			7,891.0	0.0	0.0	1,316,132.46	3,181,929.80		
Point 2			7,891.0	200.0	0.0	1,316,332.44	3,181,928.32		

Formations						
Measured Depth	Vertical Depth	Name	Lithology	Dip	Dip Direction	
(ft)	(ft)			(°)	(°)	
7,115.1	7,006.0	NIOBRARA		0.00		
7,405.1	7,296.0	CODELL		0.00		
7,850.1	7,741.0	J SAND		0.00		