

Steil Surveying Services, LLC

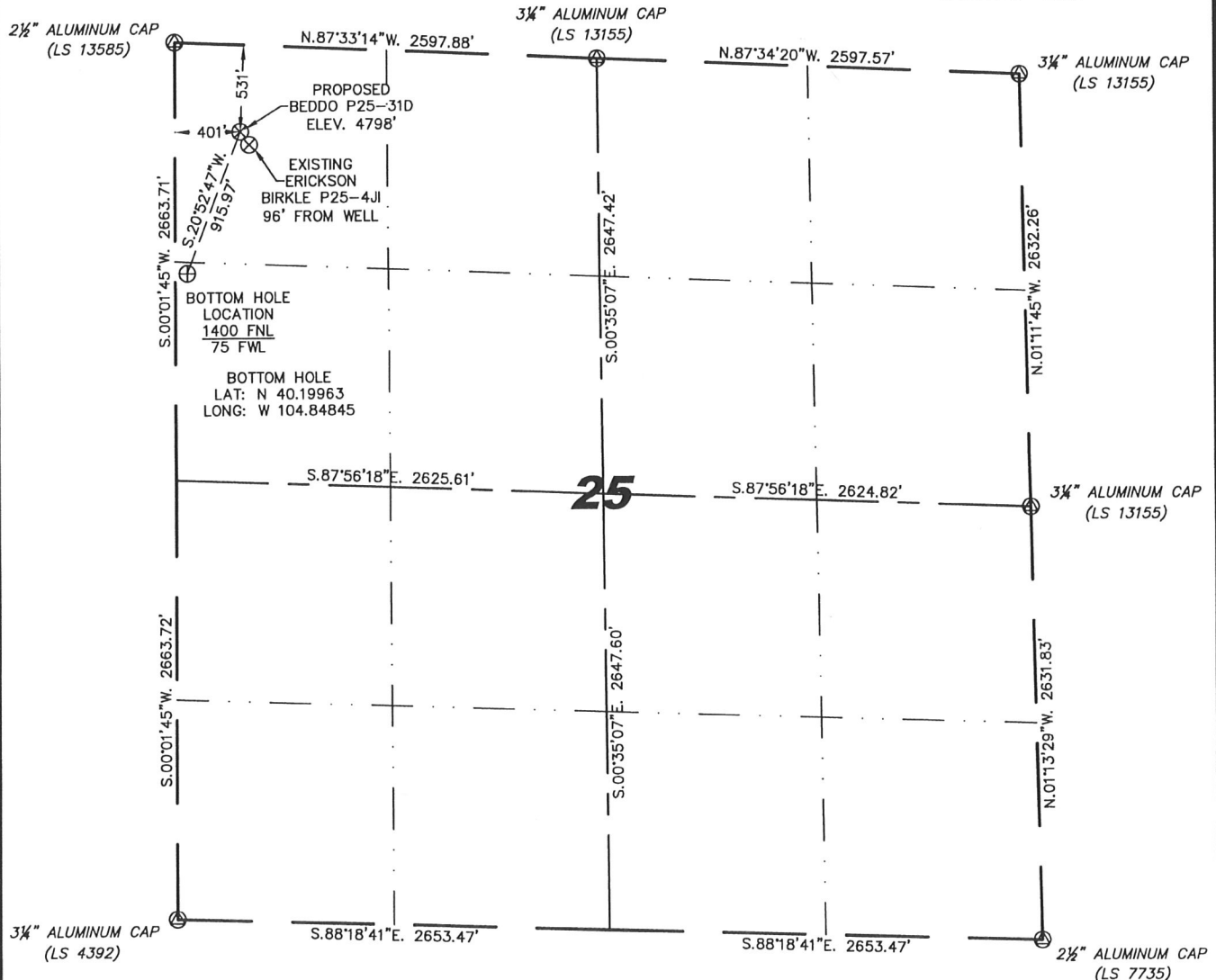
1102 West 19th Street P.O. BOX 2073

Cheyenne, Wyoming 82009

WELL LOCATION CERTIFICATE

THIS MAP DOES NOT REPRESENT A BOUNDARY SURVEY

SECTION 25
TOWNSHIP 3 NORTH
RANGE 67 WEST



0 1000

Scale: 1" = 1000'

IN ACCORDANCE WITH A REQUEST FROM MATT CAMPBELL - NOBLE ENERGY INC, STEIL SURVEYING SERVICES, LLC HAS DETERMINED THE LOCATION OF THE BEDDO P25-31D WELL TO BE 531' FNL, 401' FWL, AS MEASURED AT NINETY (90) DEGREES FROM THE SECTION LINES, SECTION 25, TOWNSHIP 3 NORTH, RANGE 67 WEST, 6TH PRINCIPLE MERIDIAN, WELD COUNTY, COLORADO.

I HEREBY CERTIFY THAT THIS WELL LOCATION CERTIFICATE WAS PREPARED BY ME, OR UNDER MY DIRECT SUPERVISION, THAT THE FIELD WORK WAS COMPLETED ON 07/17/2009, FOR AND ON BEHALF OF NOBLE ENERGY INC, THAT IT IS NOT A LAND SURVEY PLAT OR AN IMPROVEMENT SURVEY PLAT, AND THAT IT IS NOT TO BE RELIED UPON FOR ESTABLISHMENT OF FENCE, BUILDING, OR OTHER FUTURE IMPROVEMENT LINES.

NOTES:

- 1) BASIS OF BEARINGS FOR THIS MAP ARE BASED UPON GPS OBSERVATIONS MADE ON 11/05/2008 BETWEEN MONUMENTS LOCATED AT THE SOUTHEAST SECTION CORNER AND THE NORTHEAST SECTION CORNER OF SAID SECTION AND WITH ALL BEARINGS SHOWN HEREON RELATIVE THERETO.
- 2) ELEVATIONS ARE BASED UPON NGS OPUS SOLUTION NAVD 88 DATUM.
- 3) THE NEAREST EXISTING WELL IS: ERICKSON BIRKLE P25-4JI, 96' SOUTHEAST.
- 4) SEE VISIBLE IMPROVEMENTS EXHIBIT FOR ALL IMPROVEMENTS WITHIN 400'.
- 5) THE LOCATION FALLS IN PASTURE LAND.

LATITUDE & LONGITUDE (NAD 83 SURFACE HOLE):

LATITUDE: N 40.20197'
LONGITUDE: W 104.84726'
PDOP: 1.9
QUARTER-QUARTER: NW/4NW/4
NEAREST PROPERTY LINE: 401' TO THE WEST

LEGEND

- (A) FOUND SURVEY MONUMENT PER MONUMENT RECORD - EXCEPTIONS NOTED.
- (C) CALCULATED DIMENSION

NOTICE: According to Colorado law you MUST commence any legal action based upon any defect in this W.L.C. within three years after you first discover such defect. In no event may any action based upon any defect in this W.L.C. be commenced more than ten years from this sold date of the certification shown hereon.

David C. Holmes
Professional Land Surveyor Registration No. 32828
State of Colorado

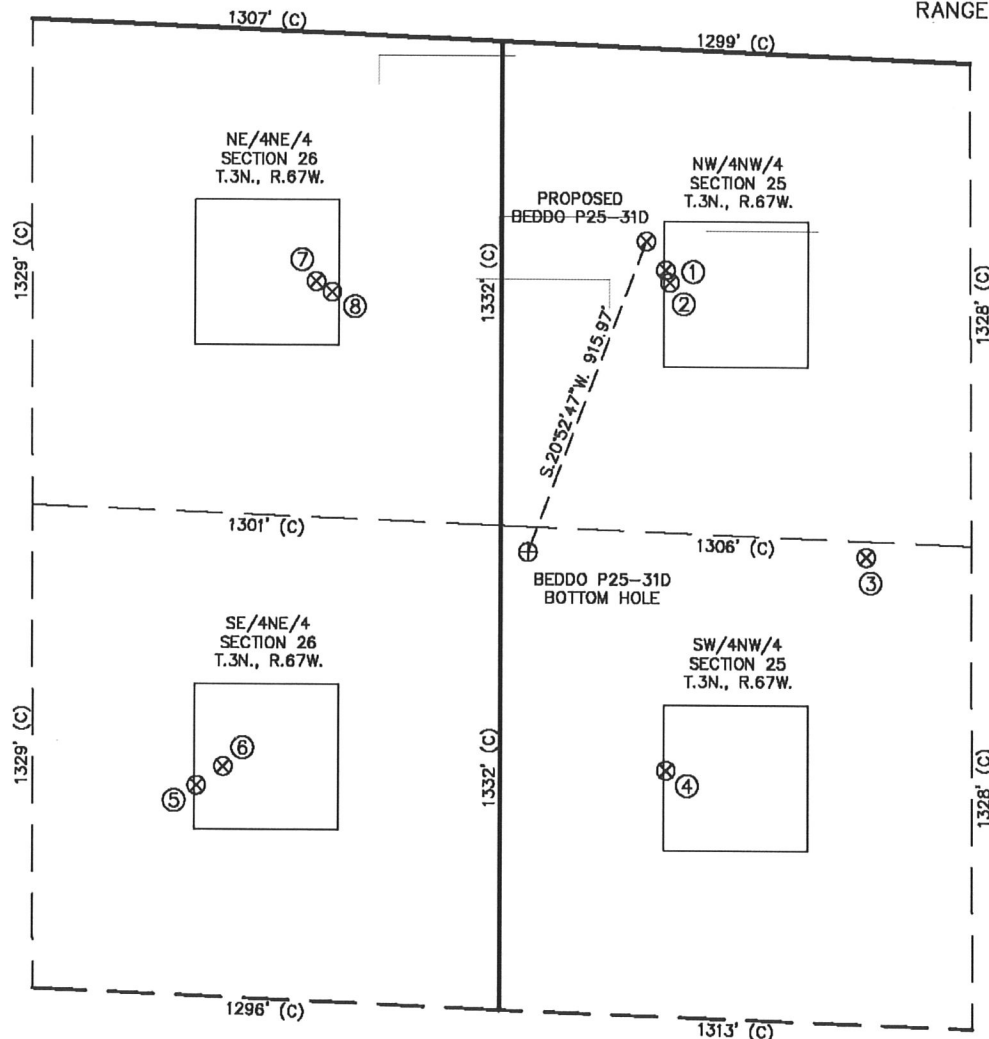
Completed 07/20/2009

JOB #: 09086



SITE SKETCH - BEDDO P25-31D

SECTION 25
TOWNSHIP 3 NORTH
RANGE 67 WEST



①	②	③	④	⑤	⑥	⑦	⑧
ERICKSON BIRKLE P25-4J NW/NW SEC. 25 608' FNL 455' FWL EL 4799' N 40.20176 W 104.84707 PDOP 2.2	HSR-BEDDO 4-25X NW/NW SEC. 25 641' FNL 467' FWL EL 4798' N 40.20166 W 104.84703 PDOP 2.6	ERICKSON BIRKLE 2-25 SW/NW SEC. 25 1371' FNL 1013' FWL EL 4803' N 40.19958 W 104.84510 PDOP 2.6	HSR-BEDDO 5-25 SW/NW SEC. 25 1982' FNL 460' FWL EL 4807' N 40.19798 W 104.84709 PDOP 2.6	HSR-MILLER 8-26A SE/NE SEC. 26 2056' FNL 843' FEL EL 4803' N 40.19788 W 104.85176 PDOP 2.1	MILLER P26-8 SE/NE SEC. 26 2003' FNL 769' FEL EL 4803' N 40.19802 W 104.85149 PDOP 2.1	HSR-MILLER 1-26A NE/NE SEC. 26 667' FNL 515' FEL EL 4799' N 40.20168 W 104.85055 PDOP 2.3	MILLER P26-1 NE/NE SEC. 26 696' FNL 471' FEL EL 4800' N 40.20160 W 104.85039 PDOP 2.3

NOTES:

- THIS SKETCH DOES NOT REPRESENT A BOUNDARY SURVEY.
- THE DATUM FOR THE LATITUDES AND LONGITUDES ON THIS SKETCH IS NAD83.

