

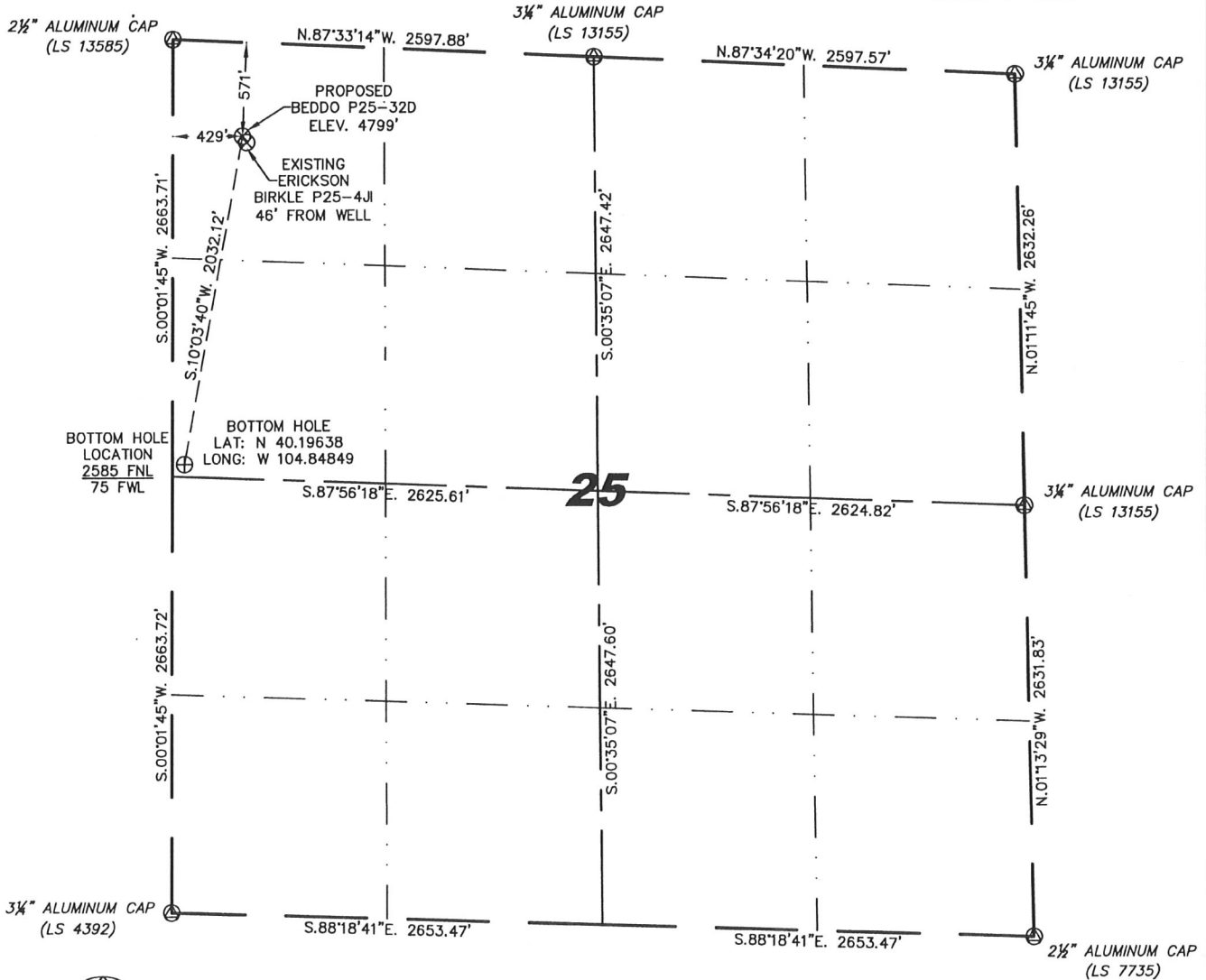
Steil Surveying Services, LLC

1102 West 19th Street P.O. BOX 2073

Cheyenne, Wyoming 82009

WELL LOCATION CERTIFICATE
THIS MAP DOES NOT REPRESENT A BOUNDARY SURVEY

SECTION 25
TOWNSHIP 3 NORTH
RANGE 67 WEST



0 1000
Scale: 1" = 1000'

IN ACCORDANCE WITH A REQUEST FROM MATT CAMPBELL - NOBLE ENERGY INC, STEIL SURVEYING SERVICES, LLC HAS DETERMINED THE LOCATION OF THE BEDDO P25-32D WELL TO BE 571' FNL, 429' FWL, AS MEASURED AT NINETY (90) DEGREES FROM THE SECTION LINES, SECTION 25, TOWNSHIP 3 NORTH, RANGE 67 WEST, 6TH PRINCIPLE MERIDIAN, WELD COUNTY, COLORADO.

I HEREBY CERTIFY THAT THIS WELL LOCATION CERTIFICATE WAS PREPARED BY ME, OR UNDER MY DIRECT SUPERVISION, THAT THE FIELD WORK WAS COMPLETED ON 07/17/2009, FOR AND ON BEHALF OF NOBLE ENERGY INC, THAT IT IS NOT A LAND SURVEY PLAT OR AN IMPROVEMENT SURVEY PLAT, AND THAT IT IS NOT TO BE RELIED UPON FOR ESTABLISHMENT OF FENCE, BUILDING, OR OTHER FUTURE IMPROVEMENT LINES.

NOTES:

- 1) BASIS OF BEARINGS FOR THIS MAP ARE BASED UPON GPS OBSERVATIONS MADE ON 11/05/2008 BETWEEN MONUMENTS LOCATED AT THE SOUTHEAST SECTION CORNER AND THE NORTHEAST SECTION CORNER OF SAID SECTION AND WITH ALL BEARINGS SHOWN HEREON RELATIVE THERETO.
- 2) ELEVATIONS ARE BASED UPON NGS OPUS SOLUTION NAVD 88 DATUM.
- 3) THE NEAREST EXISTING WELL IS: ERICKSON BIRKLE P25-4J, 46' SOUTHEAST.
- 4) SEE VISIBLE IMPROVEMENTS EXHIBIT FOR ALL IMPROVEMENTS WITHIN 400'.
- 5) THE LOCATION FALLS IN PASTURE LAND.

LATITUDE & LONGITUDE (NAD 83 SURFACE HOLE):
LATITUDE: N 40.20186°
LONGITUDE: W 104.84716°
PDOP: 2.0
QUARTER-QUARTER: NW/4NW/4
NEAREST PROPERTY LINE: 429' TO THE WEST

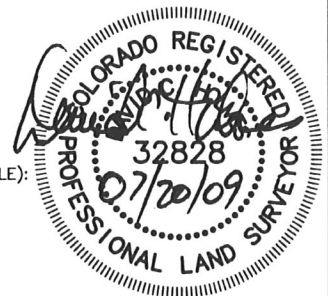
LEGEND

- ⊙ FOUND SURVEY MONUMENT PER MONUMENT RECORD - EXCEPTIONS NOTED.
- (C) CALCULATED DIMENSION

David C. Holmes
Professional Land Surveyor Registration No. 32828
State of Colorado

Completed 07/20/2009

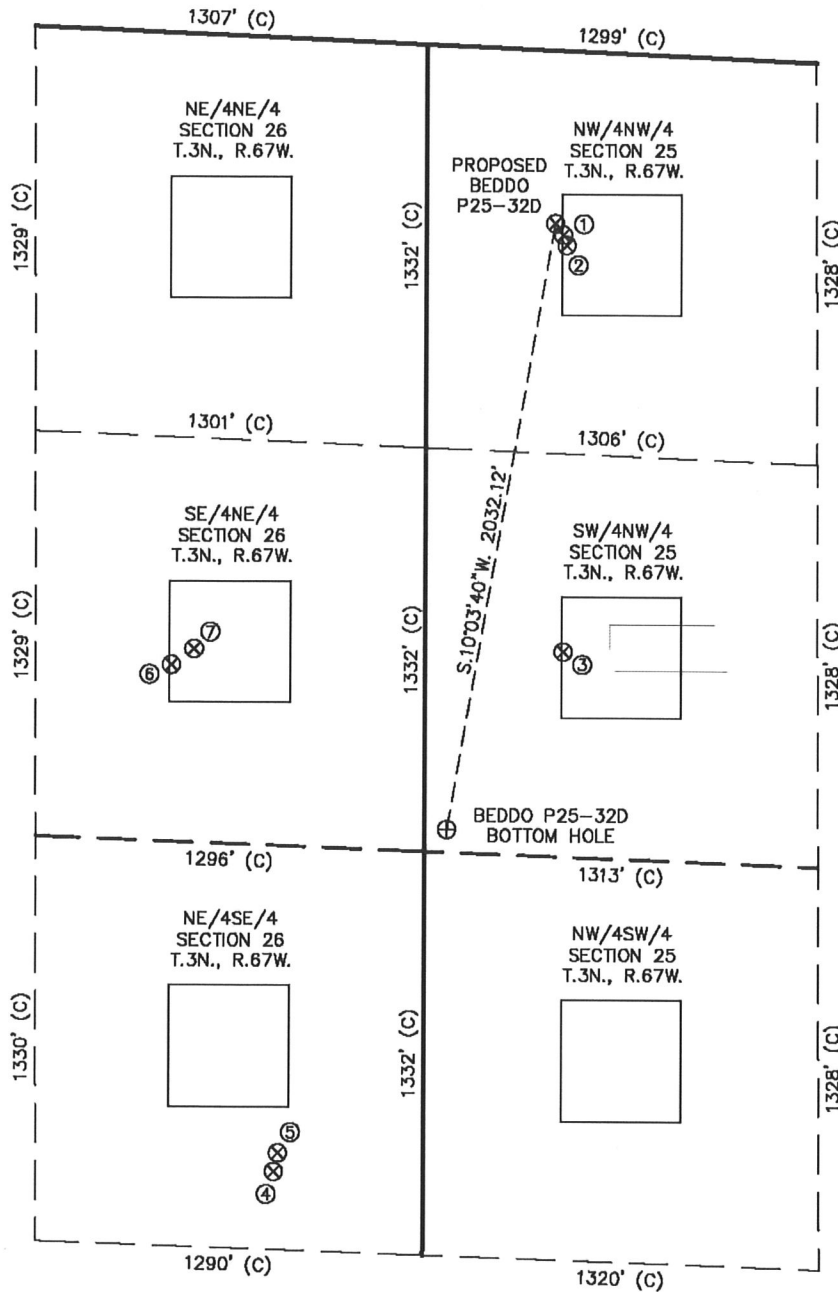
JOB #: 09086



NOTICE: According to Colorado law you MUST commence any legal action based upon any defect in this W.L.C. within three years after you first discover such defect. In no event may any action based upon any defect in this W.L.C. be commenced more than ten years from this said date of the certification shown hereon.

SITE SKETCH - BEDDO P25-32D

SECTION 25
TOWNSHIP 3 NORTH
RANGE 67 WEST



①
ERICKSON
BIRKLE P25-4JI
NW/NW SEC. 25
608' FNL
455' FWL
EL 4799'
N 40.20176
W 104.84707
PDOP 2.2

②
HSR-BEDDO
4-25X
NW/NW SEC. 25
641' FNL
467' FWL
EL 4798'
N 40.20166
W 104.84703
PDOP 2.6

③
HSR-BEDDO
5-25
SW/NW SEC. 25
1982' FNL
460' FWL
EL 4807'
N 40.19798
W 104.84709
PDOP 3.4

④
MAGNESS
P26-9
NE/SE SEC. 26
1598' FSL
496' FEL
EL 4808'
N 40.19328
W 104.85056
PDOP 2.9

⑤
HSR-MAGNESS
9-26A
NE/SE SEC. 26
1659' FSL
483' FEL
EL 4807'
N 40.19345
W 104.85051
PDOP 2.9

⑥
HSR-MILLER
8-26A
SE/NE SEC. 26
2056' FNL
843' FEL
EL 4803'
N 40.19788
W 104.85176
PDOP 2.1

⑦
MILLER P26-8
SE/NE SEC. 26
2003' FNL
769' FEL
EL 4803'
N 40.19802
W 104.85149
PDOP 2.1



0 600

Scale: 1" = 600'

NOTES:

- 1) THIS SKETCH DOES NOT REPRESENT A BOUNDARY SURVEY.
- 2) THE DATUM FOR THE LATITUDES AND LONGITUDES ON THIS SKETCH IS NAD83.