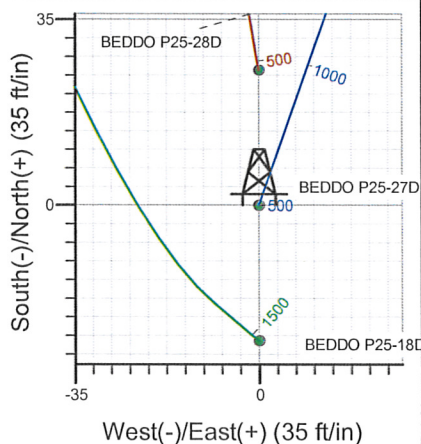
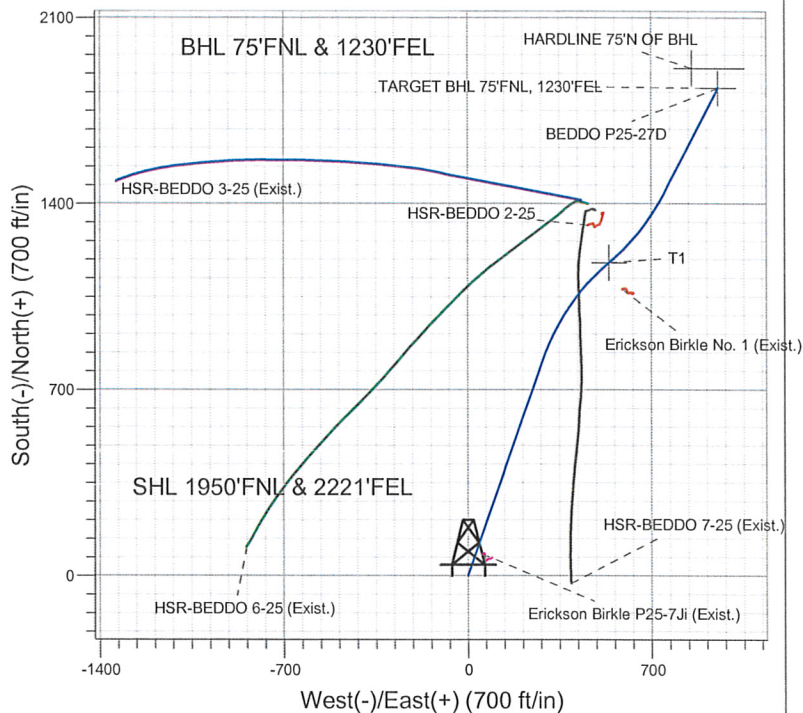
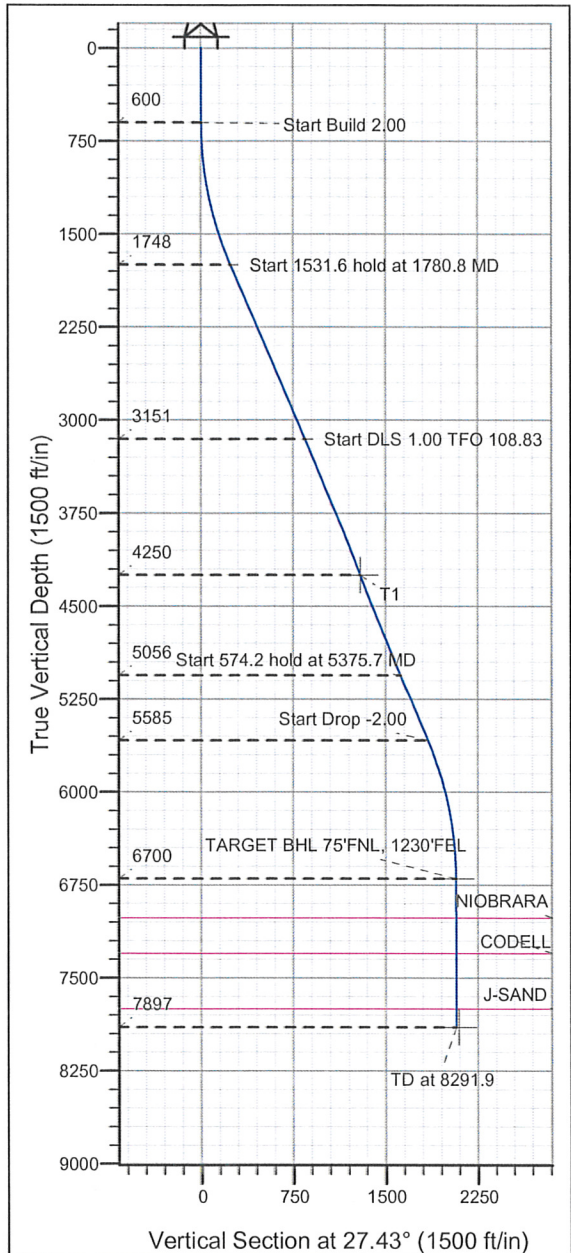


Well Name: **BEDDO P25-27D**

Surface Location: BEDDO P25-22D Pad Sec.25-T3N-R67W
 North American Datum 1983 , US State Plane 1983 , Colorado Northern Zone
 Ground Elevation: 4804.0

+N/-S +E/-W Northing Easting Latitude Longitude Slot
 0.0 0.0 1315562.22 3184930.64 40° 11' 51.792 N 104° 50' 16.692 W
 Original Well Elev WELL @ 4817.0ft (Original Well Elev)

NOBLE ENERGY INC WELD COUNTY CO



BEDDO P25-27D
 Noble BEDDO P25-27D Plan #3 (10-08-09)
 14:23, October 08 2009



Azimuths to True North
 Magnetic North: 9.08°
 Magnetic Field
 Strength: 53220.6snT
 Dip Angle: 66.94°
 Date: 9/14/2009
 Model: IGRF200510

WELLBORE TARGET DETAILS (LAT/LONG)

Name	TVD	+N/-S	+E/-W	Latitude	Longitude	Shape
T1	4250.0	1178.0	540.0	40° 12' 3.433 N	104° 50' 9.733 W	Point
TARGET BHL 75'FNL, 1230'FEL	6700.0	1836.2	952.9	40° 12' 9.937 N	104° 50' 4.411 W	Point
HARDLINE 75'N OF BHL	7897.0	1911.2	852.9	40° 12' 10.678 N	104° 50' 5.700 W	Polygon

SECTION DETAILS

Sec	MD	Inc	Azi	TVD	+N/-S	+E/-W	DLeg	TFace	VSec	Target
1	0.0	0.00	0.00	0.0	0.0	0.0	0.00	0.00	0.0	
2	600.0	0.00	0.00	600.0	0.0	0.0	0.00	0.00	0.0	
3	1780.8	23.62	19.46	1747.7	226.2	79.9	2.00	19.46	237.6	
4	3312.5	23.62	19.46	3151.0	804.8	284.4	0.00	0.00	845.3	
5	4503.0	22.60	50.00	4250.0	1178.0	540.0	1.00	108.83	1294.3	T1
6	5375.7	22.90	27.32	5056.3	1437.1	746.8	1.00	-98.55	1619.6	
7	5949.9	22.90	27.32	5585.3	1635.6	849.3	0.00	0.00	1843.0	
8	7094.9	0.00	0.00	6700.0	1836.2	952.9	2.00	180.00	2068.8	TARGET BHL 75'FNL, 1230'FEL
9	8291.9	0.00	0.00	7897.0	1836.2	952.9	0.00	0.00	2068.8	



Directional

NOBLE ENERGY INC WELD COUNTY CO

SEC.25-T3N-R67W

BEDDO P25-22D Pad Sec.25-T3N-R67W

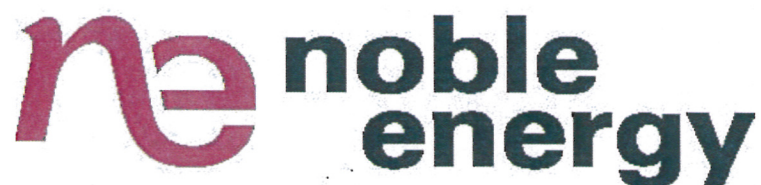
BEDDO P25-27D

Wellbore #1

Plan: Noble BEDDO P25-27D Plan #3 (10-08-09)

Standard Planning Report

08 October, 2009



Database:	Compass	Local Co-ordinate Reference:	Well BEDDO P25-27D
Company:	NOBLE ENERGY INC WELD COUNTY CO	TVD Reference:	WELL @ 4817.0ft (Original Well Elev)
Project:	SEC.25-T3N-R67W	MD Reference:	WELL @ 4817.0ft (Original Well Elev)
Site:	BEDDO P25-22D Pad Sec.25-T3N-R67W	North Reference:	True
Well:	BEDDO P25-27D	Survey Calculation Method:	Minimum Curvature
Wellbore:	Wellbore #1		
Design:	Noble BEDDO P25-27D Plan #3 (10-08-09)		

Project	SEC.25-T3N-R67W, Weld County, Colorado		
Map System:	US State Plane 1983	System Datum:	Mean Sea Level
Geo Datum:	North American Datum 1983		Using Well Reference Point
Map Zone:	Colorado Northern Zone		Using geodetic scale factor

Site	BEDDO P25-22D Pad Sec.25-T3N-R67W				
Site Position:		Northing:	1,315,639.93 ft	Latitude:	40° 11' 52.548 N
From:	Lat/Long	Easting:	3,185,092.08 ft	Longitude:	104° 50' 14.604 W
Position Uncertainty:	0.0 ft	Slot Radius:	"	Grid Convergence:	0.43 °

Well	BEDDO P25-27D					
Well Position	+N/-S	-76.5 ft	Northing:	1,315,562.22 ft	Latitude:	40° 11' 51.792 N
	+E/-W	-162.0 ft	Easting:	3,184,930.64 ft	Longitude:	104° 50' 16.692 W
Position Uncertainty	0.0 ft	Wellhead Elevation:	ft	Ground Level:	4,804.0 ft	

Wellbore	Wellbore #1
----------	-------------

Magnetics	Model Name	Sample Date	Declination (°)	Dip Angle (°)	Field Strength (nT)
	IGRF200510	9/14/2009	9.08	66.94	53,221

Design	Noble BEDDO P25-27D Plan #3 (10-08-09)
--------	--

Audit Notes:				
Version:	Phase:	PROTOTYPE	Tie On Depth:	0.0
Vertical Section:	Depth From (TVD) (ft)	+N/-S (ft)	+E/-W (ft)	Direction (°)
	0.0	0.0	0.0	27.43

Plan Sections										
Measured Depth (ft)	Inclination (°)	Azimuth (°)	Vertical Depth (ft)	+N/-S (ft)	+E/-W (ft)	Dogleg Rate (°/100ft)	Build Rate (°/100ft)	Turn Rate (°/100ft)	TFO (°)	Target
0.0	0.00	0.00	0.0	0.0	0.0	0.00	0.00	0.00	0.00	
600.0	0.00	0.00	600.0	0.0	0.0	0.00	0.00	0.00	0.00	
1,780.8	23.62	19.46	1,747.7	226.2	79.9	2.00	2.00	0.00	19.46	
3,312.5	23.62	19.46	3,151.0	804.8	284.4	0.00	0.00	0.00	0.00	
4,503.0	22.60	50.00	4,250.0	1,178.0	540.0	1.00	-0.09	2.56	108.83	T1
5,375.7	22.90	27.32	5,056.3	1,437.1	746.8	1.00	0.03	-2.60	-98.55	
5,949.9	22.90	27.32	5,585.3	1,635.6	849.3	0.00	0.00	0.00	0.00	
7,094.9	0.00	0.00	6,700.0	1,836.2	952.9	2.00	-2.00	0.00	180.00	TARGET BHL 75'FI
8,291.9	0.00	0.00	7,897.0	1,836.2	952.9	0.00	0.00	0.00	0.00	

Database:	Compass	Local Co-ordinate Reference:	Well BEDDO P25-27D
Company:	NOBLE ENERGY INC WELD COUNTY CO	TVD Reference:	WELL @ 4817.0ft (Original Well Elev)
Project:	SEC.25-T3N-R67W	MD Reference:	WELL @ 4817.0ft (Original Well Elev)
Site:	BEDDO P25-22D Pad Sec.25-T3N-R67W	North Reference:	True
Well:	BEDDO P25-27D	Survey Calculation Method:	Minimum Curvature
Wellbore:	Wellbore #1		
Design:	Noble BEDDO P25-27D Plan #3 (10-08-09)		

Planned Survey

Measured Depth (ft)	Inclination (°)	Azimuth (°)	Vertical Depth (ft)	+N/-S (ft)	+E/-W (ft)	Vertical Section (ft)	Dogleg Rate (°/100ft)	Build Rate (°/100ft)	Turn Rate (°/100ft)
0.0	0.00	0.00	0.0	0.0	0.0	0.0	0.00	0.00	0.00
40.0	0.00	0.00	40.0	0.0	0.0	0.0	0.00	0.00	0.00
80.0	0.00	0.00	80.0	0.0	0.0	0.0	0.00	0.00	0.00
120.0	0.00	0.00	120.0	0.0	0.0	0.0	0.00	0.00	0.00
160.0	0.00	0.00	160.0	0.0	0.0	0.0	0.00	0.00	0.00
200.0	0.00	0.00	200.0	0.0	0.0	0.0	0.00	0.00	0.00
240.0	0.00	0.00	240.0	0.0	0.0	0.0	0.00	0.00	0.00
280.0	0.00	0.00	280.0	0.0	0.0	0.0	0.00	0.00	0.00
320.0	0.00	0.00	320.0	0.0	0.0	0.0	0.00	0.00	0.00
360.0	0.00	0.00	360.0	0.0	0.0	0.0	0.00	0.00	0.00
400.0	0.00	0.00	400.0	0.0	0.0	0.0	0.00	0.00	0.00
440.0	0.00	0.00	440.0	0.0	0.0	0.0	0.00	0.00	0.00
480.0	0.00	0.00	480.0	0.0	0.0	0.0	0.00	0.00	0.00
520.0	0.00	0.00	520.0	0.0	0.0	0.0	0.00	0.00	0.00
560.0	0.00	0.00	560.0	0.0	0.0	0.0	0.00	0.00	0.00
600.0	0.00	0.00	600.0	0.0	0.0	0.0	0.00	0.00	0.00
640.0	0.80	19.46	640.0	0.3	0.1	0.3	2.00	2.00	0.00
680.0	1.60	19.46	680.0	1.1	0.4	1.1	2.00	2.00	0.00
720.0	2.40	19.46	720.0	2.4	0.8	2.5	2.00	2.00	0.00
760.0	3.20	19.46	759.9	4.2	1.5	4.4	2.00	2.00	0.00
800.0	4.00	19.46	799.8	6.6	2.3	6.9	2.00	2.00	0.00
840.0	4.80	19.46	839.7	9.5	3.3	10.0	2.00	2.00	0.00
880.0	5.60	19.46	879.6	12.9	4.6	13.5	2.00	2.00	0.00
920.0	6.40	19.46	919.3	16.8	5.9	17.7	2.00	2.00	0.00
960.0	7.20	19.46	959.1	21.3	7.5	22.4	2.00	2.00	0.00
1,000.0	8.00	19.46	998.7	26.3	9.3	27.6	2.00	2.00	0.00
1,040.0	8.80	19.46	1,038.3	31.8	11.2	33.4	2.00	2.00	0.00
1,080.0	9.60	19.46	1,077.8	37.8	13.4	39.7	2.00	2.00	0.00
1,120.0	10.40	19.46	1,117.1	44.4	15.7	46.6	2.00	2.00	0.00
1,160.0	11.20	19.46	1,156.4	51.4	18.2	54.0	2.00	2.00	0.00
1,200.0	12.00	19.46	1,195.6	59.0	20.9	62.0	2.00	2.00	0.00
1,240.0	12.80	19.46	1,234.7	67.1	23.7	70.5	2.00	2.00	0.00
1,280.0	13.60	19.46	1,273.6	75.7	26.8	79.6	2.00	2.00	0.00
1,320.0	14.40	19.46	1,312.4	84.9	30.0	89.1	2.00	2.00	0.00
1,360.0	15.20	19.46	1,351.1	94.5	33.4	99.3	2.00	2.00	0.00
1,400.0	16.00	19.46	1,389.6	104.6	37.0	109.9	2.00	2.00	0.00
1,440.0	16.80	19.46	1,428.0	115.3	40.7	121.1	2.00	2.00	0.00
1,480.0	17.60	19.46	1,466.2	126.4	44.7	132.8	2.00	2.00	0.00
1,520.0	18.40	19.46	1,504.3	138.1	48.8	145.0	2.00	2.00	0.00
1,560.0	19.20	19.46	1,542.1	150.2	53.1	157.8	2.00	2.00	0.00
1,600.0	20.00	19.46	1,579.8	162.9	57.6	171.1	2.00	2.00	0.00
1,640.0	20.80	19.46	1,617.3	176.0	62.2	184.9	2.00	2.00	0.00
1,680.0	21.60	19.46	1,654.6	189.7	67.0	199.2	2.00	2.00	0.00
1,720.0	22.40	19.46	1,691.7	203.8	72.0	214.1	2.00	2.00	0.00
1,760.0	23.20	19.46	1,728.6	218.4	77.2	229.4	2.00	2.00	0.00
1,780.8	23.62	19.46	1,747.7	226.2	79.9	237.6	2.00	2.00	0.00
1,800.0	23.62	19.46	1,765.2	233.5	82.5	245.2	0.00	0.00	0.00
1,840.0	23.62	19.46	1,801.9	248.6	87.8	261.1	0.00	0.00	0.00
1,880.0	23.62	19.46	1,838.5	263.7	93.2	277.0	0.00	0.00	0.00
1,920.0	23.62	19.46	1,875.2	278.8	98.5	292.8	0.00	0.00	0.00
1,960.0	23.62	19.46	1,911.8	293.9	103.9	308.7	0.00	0.00	0.00
2,000.0	23.62	19.46	1,948.5	309.0	109.2	324.6	0.00	0.00	0.00
2,040.0	23.62	19.46	1,985.1	324.1	114.5	340.4	0.00	0.00	0.00
2,080.0	23.62	19.46	2,021.8	339.2	119.9	356.3	0.00	0.00	0.00

Database:	Compass	Local Co-ordinate Reference:	Well BEDDO P25-27D
Company:	NOBLE ENERGY INC WELD COUNTY CO	TVD Reference:	WELL @ 4817.0ft (Original Well Elev)
Project:	SEC.25-T3N-R67W	MD Reference:	WELL @ 4817.0ft (Original Well Elev)
Site:	BEDDO P25-22D Pad Sec.25-T3N-R67W	North Reference:	True
Well:	BEDDO P25-27D	Survey Calculation Method:	Minimum Curvature
Wellbore:	Wellbore #1		
Design:	Noble BEDDO P25-27D Plan #3 (10-08-09)		

Planned Survey

Measured Depth (ft)	Inclination (°)	Azimuth (°)	Vertical Depth (ft)	+N/-S (ft)	+E/-W (ft)	Vertical Section (ft)	Dogleg Rate (°/100ft)	Build Rate (°/100ft)	Turn Rate (°/100ft)
2,120.0	23.62	19.46	2,058.4	354.3	125.2	372.2	0.00	0.00	0.00
2,160.0	23.62	19.46	2,095.1	369.4	130.6	388.1	0.00	0.00	0.00
2,200.0	23.62	19.46	2,131.7	384.6	135.9	403.9	0.00	0.00	0.00
2,240.0	23.62	19.46	2,168.4	399.7	141.2	419.8	0.00	0.00	0.00
2,280.0	23.62	19.46	2,205.0	414.8	146.6	435.7	0.00	0.00	0.00
2,320.0	23.62	19.46	2,241.7	429.9	151.9	451.5	0.00	0.00	0.00
2,360.0	23.62	19.46	2,278.3	445.0	157.2	467.4	0.00	0.00	0.00
2,400.0	23.62	19.46	2,315.0	460.1	162.6	483.3	0.00	0.00	0.00
2,440.0	23.62	19.46	2,351.6	475.2	167.9	499.1	0.00	0.00	0.00
2,480.0	23.62	19.46	2,388.3	490.3	173.3	515.0	0.00	0.00	0.00
2,520.0	23.62	19.46	2,424.9	505.4	178.6	530.9	0.00	0.00	0.00
2,560.0	23.62	19.46	2,461.6	520.5	183.9	546.8	0.00	0.00	0.00
2,600.0	23.62	19.46	2,498.2	535.6	189.3	562.6	0.00	0.00	0.00
2,640.0	23.62	19.46	2,534.9	550.8	194.6	578.5	0.00	0.00	0.00
2,680.0	23.62	19.46	2,571.5	565.9	200.0	594.4	0.00	0.00	0.00
2,720.0	23.62	19.46	2,608.2	581.0	205.3	610.2	0.00	0.00	0.00
2,760.0	23.62	19.46	2,644.8	596.1	210.6	626.1	0.00	0.00	0.00
2,800.0	23.62	19.46	2,681.5	611.2	216.0	642.0	0.00	0.00	0.00
2,840.0	23.62	19.46	2,718.1	626.3	221.3	657.8	0.00	0.00	0.00
2,880.0	23.62	19.46	2,754.8	641.4	226.7	673.7	0.00	0.00	0.00
2,920.0	23.62	19.46	2,791.4	656.5	232.0	689.6	0.00	0.00	0.00
2,960.0	23.62	19.46	2,828.1	671.6	237.3	705.4	0.00	0.00	0.00
3,000.0	23.62	19.46	2,864.7	686.7	242.7	721.3	0.00	0.00	0.00
3,040.0	23.62	19.46	2,901.4	701.8	248.0	737.2	0.00	0.00	0.00
3,080.0	23.62	19.46	2,938.0	716.9	253.3	753.1	0.00	0.00	0.00
3,120.0	23.62	19.46	2,974.7	732.1	258.7	768.9	0.00	0.00	0.00
3,160.0	23.62	19.46	3,011.3	747.2	264.0	784.8	0.00	0.00	0.00
3,200.0	23.62	19.46	3,048.0	762.3	269.4	800.7	0.00	0.00	0.00
3,240.0	23.62	19.46	3,084.6	777.4	274.7	816.5	0.00	0.00	0.00
3,280.0	23.62	19.46	3,121.3	792.5	280.0	832.4	0.00	0.00	0.00
3,312.5	23.62	19.46	3,151.0	804.8	284.4	845.3	0.00	0.00	0.00
3,320.0	23.59	19.64	3,157.9	807.6	285.4	848.3	1.00	-0.32	2.36
3,360.0	23.47	20.59	3,194.6	822.6	290.9	864.1	1.00	-0.31	2.38
3,400.0	23.35	21.55	3,231.3	837.4	296.6	879.9	1.00	-0.30	2.40
3,440.0	23.23	22.52	3,268.1	852.1	302.5	895.7	1.00	-0.28	2.43
3,480.0	23.13	23.50	3,304.8	866.6	308.7	911.4	1.00	-0.27	2.45
3,520.0	23.03	24.49	3,341.6	880.9	315.1	927.0	1.00	-0.25	2.47
3,560.0	22.93	25.48	3,378.5	895.0	321.7	942.6	1.00	-0.24	2.49
3,600.0	22.84	26.49	3,415.3	909.0	328.5	958.2	1.00	-0.22	2.51
3,640.0	22.76	27.50	3,452.2	922.8	335.5	973.7	1.00	-0.21	2.53
3,680.0	22.68	28.51	3,489.1	936.5	342.8	989.1	1.00	-0.19	2.54
3,720.0	22.61	29.54	3,526.0	950.0	350.2	1,004.5	1.00	-0.17	2.56
3,760.0	22.55	30.57	3,562.9	963.2	357.9	1,019.8	1.00	-0.16	2.57
3,800.0	22.49	31.60	3,599.9	976.4	365.8	1,035.1	1.00	-0.14	2.58
3,840.0	22.44	32.64	3,636.8	989.3	374.0	1,050.4	1.00	-0.12	2.60
3,880.0	22.40	33.68	3,673.8	1,002.1	382.3	1,065.5	1.00	-0.11	2.61
3,920.0	22.36	34.73	3,710.8	1,014.7	390.9	1,080.7	1.00	-0.09	2.62
3,960.0	22.33	35.78	3,747.8	1,027.1	399.6	1,095.7	1.00	-0.07	2.62
4,000.0	22.31	36.83	3,784.8	1,039.3	408.6	1,110.7	1.00	-0.06	2.63
4,040.0	22.29	37.88	3,821.8	1,051.4	417.8	1,125.7	1.00	-0.04	2.63
4,080.0	22.29	38.93	3,858.8	1,063.3	427.3	1,140.6	1.00	-0.02	2.64
4,120.0	22.28	39.99	3,895.8	1,075.0	436.9	1,155.4	1.00	-0.01	2.64
4,160.0	22.29	41.04	3,932.8	1,086.5	446.8	1,170.2	1.00	0.01	2.64
4,200.0	22.30	42.10	3,969.9	1,097.9	456.8	1,184.9	1.00	0.03	2.64

Database:	Compass	Local Co-ordinate Reference:	Well BEDDO P25-27D
Company:	NOBLE ENERGY INC WELD COUNTY CO	TVD Reference:	WELL @ 4817.0ft (Original Well Elev)
Project:	SEC.25-T3N-R67W	MD Reference:	WELL @ 4817.0ft (Original Well Elev)
Site:	BEDDO P25-22D Pad Sec.25-T3N-R67W	North Reference:	True
Well:	BEDDO P25-27D	Survey Calculation Method:	Minimum Curvature
Wellbore:	Wellbore #1		
Design:	Noble BEDDO P25-27D Plan #3 (10-08-09)		

Planned Survey

Measured Depth (ft)	Inclination (°)	Azimuth (°)	Vertical Depth (ft)	+N/-S (ft)	+E/-W (ft)	Vertical Section (ft)	Dogleg Rate (°/100ft)	Build Rate (°/100ft)	Turn Rate (°/100ft)
4,240.0	22.32	43.15	4,006.9	1,109.1	467.1	1,199.6	1.00	0.04	2.63
4,280.0	22.34	44.20	4,043.9	1,120.1	477.6	1,214.2	1.00	0.06	2.63
4,320.0	22.37	45.25	4,080.9	1,130.9	488.3	1,228.7	1.00	0.08	2.62
4,360.0	22.41	46.30	4,117.8	1,141.5	499.2	1,243.1	1.00	0.10	2.61
4,400.0	22.45	47.34	4,154.8	1,151.9	510.4	1,257.5	1.00	0.11	2.60
4,440.0	22.51	48.37	4,191.8	1,162.2	521.7	1,271.9	1.00	0.13	2.59
4,480.0	22.56	49.41	4,228.7	1,172.3	533.3	1,286.1	1.00	0.15	2.58
4,503.0	22.60	50.00	4,250.0	1,178.0	540.0	1,294.3	1.00	0.16	2.57
T1									
4,520.0	22.58	49.56	4,265.7	1,182.2	545.0	1,300.3	1.00	-0.15	-2.58
4,560.0	22.52	48.53	4,302.6	1,192.3	556.6	1,314.6	1.00	-0.13	-2.58
4,600.0	22.48	47.49	4,339.6	1,202.5	567.9	1,328.9	1.00	-0.12	-2.60
4,640.0	22.44	46.45	4,376.5	1,212.9	579.1	1,343.3	1.00	-0.10	-2.60
4,680.0	22.40	45.40	4,413.5	1,223.5	590.1	1,357.8	1.00	-0.08	-2.61
4,720.0	22.38	44.36	4,450.5	1,234.3	600.8	1,372.3	1.00	-0.07	-2.62
4,760.0	22.36	43.31	4,487.5	1,245.3	611.4	1,386.9	1.00	-0.05	-2.62
4,800.0	22.34	42.25	4,524.5	1,256.5	621.7	1,401.6	1.00	-0.03	-2.63
4,840.0	22.34	41.20	4,561.5	1,267.8	631.8	1,416.3	1.00	-0.02	-2.63
4,880.0	22.34	40.15	4,598.5	1,279.3	641.7	1,431.1	1.00	0.00	-2.63
4,920.0	22.34	39.10	4,635.5	1,291.1	651.4	1,446.0	1.00	0.02	-2.63
4,960.0	22.36	38.05	4,672.5	1,302.9	660.9	1,460.9	1.00	0.04	-2.63
5,000.0	22.38	37.00	4,709.5	1,315.0	670.2	1,475.9	1.00	0.05	-2.62
5,040.0	22.41	35.95	4,746.4	1,327.3	679.2	1,490.9	1.00	0.07	-2.62
5,080.0	22.44	34.90	4,783.4	1,339.7	688.1	1,506.1	1.00	0.09	-2.61
5,120.0	22.48	33.86	4,820.4	1,352.3	696.7	1,521.2	1.00	0.10	-2.60
5,160.0	22.53	32.83	4,857.3	1,365.1	705.1	1,536.5	1.00	0.12	-2.59
5,200.0	22.58	31.79	4,894.3	1,378.1	713.3	1,551.7	1.00	0.14	-2.58
5,240.0	22.64	30.76	4,931.2	1,391.2	721.3	1,567.1	1.00	0.15	-2.57
5,280.0	22.71	29.74	4,968.1	1,404.5	729.1	1,582.5	1.00	0.17	-2.56
5,320.0	22.79	28.72	5,005.0	1,418.0	736.6	1,597.9	1.00	0.18	-2.54
5,360.0	22.87	27.71	5,041.9	1,431.7	744.0	1,613.5	1.00	0.20	-2.53
5,375.7	22.90	27.32	5,056.3	1,437.1	746.8	1,619.6	1.00	0.21	-2.51
5,400.0	22.90	27.32	5,078.7	1,445.5	751.1	1,629.0	0.00	0.00	0.00
5,440.0	22.90	27.32	5,115.6	1,459.4	758.3	1,644.6	0.00	0.00	0.00
5,480.0	22.90	27.32	5,152.4	1,473.2	765.4	1,660.1	0.00	0.00	0.00
5,520.0	22.90	27.32	5,189.3	1,487.0	772.5	1,675.7	0.00	0.00	0.00
5,560.0	22.90	27.32	5,226.1	1,500.8	779.7	1,691.3	0.00	0.00	0.00
5,600.0	22.90	27.32	5,263.0	1,514.7	786.8	1,706.8	0.00	0.00	0.00
5,640.0	22.90	27.32	5,299.8	1,528.5	794.0	1,722.4	0.00	0.00	0.00
5,680.0	22.90	27.32	5,336.6	1,542.3	801.1	1,738.0	0.00	0.00	0.00
5,720.0	22.90	27.32	5,373.5	1,556.1	808.3	1,753.5	0.00	0.00	0.00
5,760.0	22.90	27.32	5,410.3	1,570.0	815.4	1,769.1	0.00	0.00	0.00
5,800.0	22.90	27.32	5,447.2	1,583.8	822.5	1,784.7	0.00	0.00	0.00
5,840.0	22.90	27.32	5,484.0	1,597.6	829.7	1,800.2	0.00	0.00	0.00
5,880.0	22.90	27.32	5,520.9	1,611.5	836.8	1,815.8	0.00	0.00	0.00
5,920.0	22.90	27.32	5,557.7	1,625.3	844.0	1,831.4	0.00	0.00	0.00
5,949.9	22.90	27.32	5,585.3	1,635.6	849.3	1,843.0	0.00	0.00	0.00
5,960.0	22.70	27.32	5,594.6	1,639.1	851.1	1,846.9	2.00	-2.00	0.00
6,000.0	21.90	27.32	5,631.6	1,652.6	858.1	1,862.1	2.00	-2.00	0.00
6,040.0	21.10	27.32	5,668.8	1,665.6	864.8	1,876.7	2.00	-2.00	0.00
6,080.0	20.30	27.32	5,706.2	1,678.2	871.3	1,890.9	2.00	-2.00	0.00
6,120.0	19.50	27.32	5,743.8	1,690.3	877.5	1,904.5	2.00	-2.00	0.00
6,160.0	18.70	27.32	5,781.6	1,701.9	883.5	1,917.6	2.00	-2.00	0.00

Database: Compass
 Company: NOBLE ENERGY INC WELD COUNTY CO
 Project: SEC.25-T3N-R67W
 Site: BEDDO P25-22D Pad Sec.25-T3N-R67W
 Well: BEDDO P25-27D
 Wellbore: Wellbore #1
 Design: Noble BEDDO P25-27D Plan #3 (10-08-09)

Local Co-ordinate Reference: Well BEDDO P25-27D
 TVD Reference: WELL @ 4817.0ft (Original Well Elev)
 MD Reference: WELL @ 4817.0ft (Original Well Elev)
 North Reference: True
 Survey Calculation Method: Minimum Curvature

Planned Survey

Measured Depth (ft)	Inclination (°)	Azimuth (°)	Vertical Depth (ft)	+N/-S (ft)	+E/-W (ft)	Vertical Section (ft)	Dogleg Rate (°/100ft)	Build Rate (°/100ft)	Turn Rate (°/100ft)
6,200.0	17.90	27.32	5,819.6	1,713.0	889.3	1,930.1	2.00	-2.00	0.00
6,240.0	17.10	27.32	5,857.8	1,723.7	894.8	1,942.2	2.00	-2.00	0.00
6,280.0	16.30	27.32	5,896.1	1,733.9	900.1	1,953.6	2.00	-2.00	0.00
6,320.0	15.50	27.32	5,934.6	1,743.7	905.1	1,964.6	2.00	-2.00	0.00
6,360.0	14.70	27.32	5,973.2	1,752.9	909.9	1,975.0	2.00	-2.00	0.00
6,400.0	13.90	27.32	6,011.9	1,761.7	914.4	1,984.9	2.00	-2.00	0.00
6,440.0	13.10	27.32	6,050.8	1,770.0	918.7	1,994.2	2.00	-2.00	0.00
6,480.0	12.30	27.32	6,089.8	1,777.8	922.8	2,003.0	2.00	-2.00	0.00
6,520.0	11.50	27.32	6,129.0	1,785.1	926.5	2,011.3	2.00	-2.00	0.00
6,560.0	10.70	27.32	6,168.2	1,792.0	930.1	2,019.0	2.00	-2.00	0.00
6,600.0	9.90	27.32	6,207.6	1,798.3	933.4	2,026.1	2.00	-2.00	0.00
6,640.0	9.10	27.32	6,247.0	1,804.2	936.4	2,032.7	2.00	-2.00	0.00
6,680.0	8.30	27.32	6,286.6	1,809.6	939.2	2,038.8	2.00	-2.00	0.00
6,720.0	7.50	27.32	6,326.2	1,814.5	941.7	2,044.3	2.00	-2.00	0.00
6,760.0	6.70	27.32	6,365.9	1,818.8	944.0	2,049.2	2.00	-2.00	0.00
6,800.0	5.90	27.32	6,405.7	1,822.7	946.0	2,053.6	2.00	-2.00	0.00
6,840.0	5.10	27.32	6,445.5	1,826.2	947.7	2,057.4	2.00	-2.00	0.00
6,880.0	4.30	27.32	6,485.3	1,829.1	949.2	2,060.7	2.00	-2.00	0.00
6,920.0	3.50	27.32	6,525.2	1,831.5	950.5	2,063.4	2.00	-2.00	0.00
6,960.0	2.70	27.32	6,565.2	1,833.4	951.5	2,065.6	2.00	-2.00	0.00
7,000.0	1.90	27.32	6,605.2	1,834.8	952.2	2,067.2	2.00	-2.00	0.00
7,040.0	1.10	27.32	6,645.1	1,835.7	952.7	2,068.2	2.00	-2.00	0.00
7,080.0	0.30	27.32	6,685.1	1,836.2	952.9	2,068.7	2.00	-2.00	0.00
7,094.9	0.00	0.00	6,700.0	1,836.2	952.9	2,068.8	2.00	-2.00	0.00
TARGET BHL 75'FNL, 1230'FEL									
7,120.0	0.00	0.00	6,725.1	1,836.2	952.9	2,068.8	0.00	0.00	0.00
7,160.0	0.00	0.00	6,765.1	1,836.2	952.9	2,068.8	0.00	0.00	0.00
7,200.0	0.00	0.00	6,805.1	1,836.2	952.9	2,068.8	0.00	0.00	0.00
7,240.0	0.00	0.00	6,845.1	1,836.2	952.9	2,068.8	0.00	0.00	0.00
7,280.0	0.00	0.00	6,885.1	1,836.2	952.9	2,068.8	0.00	0.00	0.00
7,320.0	0.00	0.00	6,925.1	1,836.2	952.9	2,068.8	0.00	0.00	0.00
7,360.0	0.00	0.00	6,965.1	1,836.2	952.9	2,068.8	0.00	0.00	0.00
7,400.0	0.00	0.00	7,005.1	1,836.2	952.9	2,068.8	0.00	0.00	0.00
7,406.9	0.00	0.00	7,012.0	1,836.2	952.9	2,068.8	0.00	0.00	0.00
NIOBRARA									
7,440.0	0.00	0.00	7,045.1	1,836.2	952.9	2,068.8	0.00	0.00	0.00
7,480.0	0.00	0.00	7,085.1	1,836.2	952.9	2,068.8	0.00	0.00	0.00
7,520.0	0.00	0.00	7,125.1	1,836.2	952.9	2,068.8	0.00	0.00	0.00
7,560.0	0.00	0.00	7,165.1	1,836.2	952.9	2,068.8	0.00	0.00	0.00
7,600.0	0.00	0.00	7,205.1	1,836.2	952.9	2,068.8	0.00	0.00	0.00
7,640.0	0.00	0.00	7,245.1	1,836.2	952.9	2,068.8	0.00	0.00	0.00
7,680.0	0.00	0.00	7,285.1	1,836.2	952.9	2,068.8	0.00	0.00	0.00
7,696.9	0.00	0.00	7,302.0	1,836.2	952.9	2,068.8	0.00	0.00	0.00
CODELL									
7,720.0	0.00	0.00	7,325.1	1,836.2	952.9	2,068.8	0.00	0.00	0.00
7,760.0	0.00	0.00	7,365.1	1,836.2	952.9	2,068.8	0.00	0.00	0.00
7,800.0	0.00	0.00	7,405.1	1,836.2	952.9	2,068.8	0.00	0.00	0.00
7,840.0	0.00	0.00	7,445.1	1,836.2	952.9	2,068.8	0.00	0.00	0.00
7,880.0	0.00	0.00	7,485.1	1,836.2	952.9	2,068.8	0.00	0.00	0.00
7,920.0	0.00	0.00	7,525.1	1,836.2	952.9	2,068.8	0.00	0.00	0.00
7,960.0	0.00	0.00	7,565.1	1,836.2	952.9	2,068.8	0.00	0.00	0.00
8,000.0	0.00	0.00	7,605.1	1,836.2	952.9	2,068.8	0.00	0.00	0.00
8,040.0	0.00	0.00	7,645.1	1,836.2	952.9	2,068.8	0.00	0.00	0.00

Database:	Compass	Local Co-ordinate Reference:	Well BEDDO P25-27D
Company:	NOBLE ENERGY INC WELD COUNTY CO	TVD Reference:	WELL @ 4817.0ft (Original Well Elev)
Project:	SEC.25-T3N-R67W	MD Reference:	WELL @ 4817.0ft (Original Well Elev)
Site:	BEDDO P25-22D Pad Sec.25-T3N-R67W	North Reference:	True
Well:	BEDDO P25-27D	Survey Calculation Method:	Minimum Curvature
Wellbore:	Wellbore #1		
Design:	Noble BEDDO P25-27D Plan #3 (10-08-09)		

Planned Survey

Measured Depth (ft)	Inclination (°)	Azimuth (°)	Vertical Depth (ft)	+N/-S (ft)	+E/-W (ft)	Vertical Section (ft)	Dogleg Rate (°/100ft)	Build Rate (°/100ft)	Turn Rate (°/100ft)
8,080.0	0.00	0.00	7,685.1	1,836.2	952.9	2,068.8	0.00	0.00	0.00
8,120.0	0.00	0.00	7,725.1	1,836.2	952.9	2,068.8	0.00	0.00	0.00
8,141.9	0.00	0.00	7,747.0	1,836.2	952.9	2,068.8	0.00	0.00	0.00
J-SAND									
8,160.0	0.00	0.00	7,765.1	1,836.2	952.9	2,068.8	0.00	0.00	0.00
8,200.0	0.00	0.00	7,805.1	1,836.2	952.9	2,068.8	0.00	0.00	0.00
8,240.0	0.00	0.00	7,845.1	1,836.2	952.9	2,068.8	0.00	0.00	0.00
8,280.0	0.00	0.00	7,885.1	1,836.2	952.9	2,068.8	0.00	0.00	0.00
8,291.9	0.00	0.00	7,897.0	1,836.2	952.9	2,068.8	0.00	0.00	0.00
HARDLINE 75°N OF BHL									

Formations

Measured Depth (ft)	Vertical Depth (ft)	Name	Lithology	Dip (°)	Dip Direction (°)
7,406.9	7,012.0	NIOBRARA		0.00	
7,696.9	7,302.0	CODELL		0.00	
8,141.9	7,747.0	J-SAND		0.00	