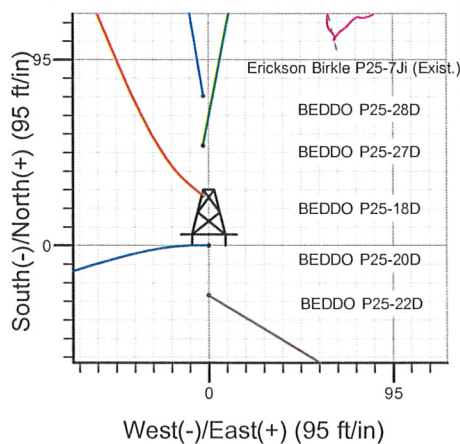
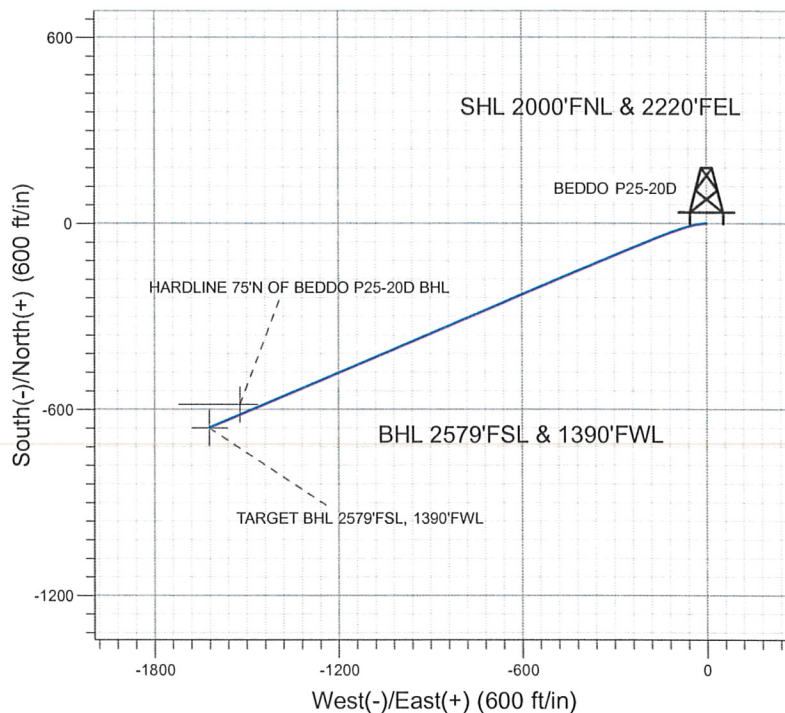
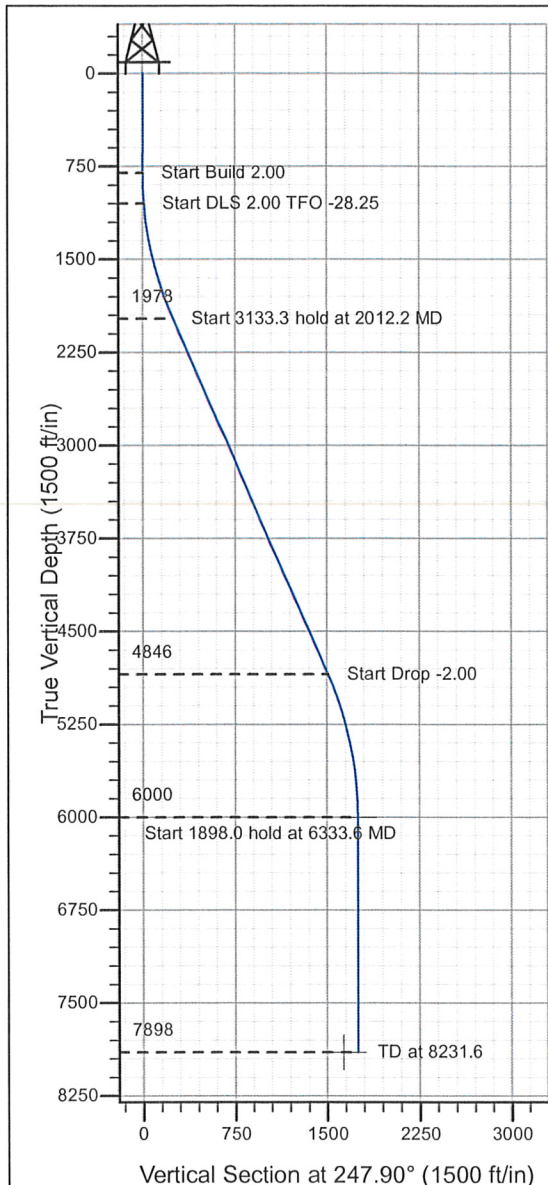


Well Name:BEDDO P25-20D

Surface Location: BEDDO P25-22D Pad Sec.25-T3N-R67W  
 North American Datum 1983 , US State Plane 1983 , Colorado Northern Zone  
 Ground Elevation: 4805.0  
 -S+E/-W Northing Easting Latitude Longitude S  
 0.0 1315511.24 3184933.81 40° 11' 51.288 N 104° 50' 16.656 W  
 Original Well Elev WELL @ 4818.0ft (Original Well Elev)

+N/-S+E/-W	Northing	Easting	Latitude	Longitude	Slot
0.0	0.0	1315511.24	3184933.81	40° 11' 51.288 N	104° 50' 16.656 W
		Original Well Elev	WELL @ 4818.0ft (Original Well Elev)		

**NOBLE ENERGY INC WELD COUNTY CO**



BEDDO P25-22D Pad Sec.25-T3N-R67W  
BEDDO P25-20D  
Noble BEDDO P25-20D Plan #1 (9-30-09  
17:07, September 30 2009



Azimuths to True North  
Magnetic North: 9.08°

Magnetic Field  
Strength: 53220.5nT  
Dip Angle: 66.94°  
Date: 9/14/2009  
Model: IGRF200510

## WELLBORE TARGET DETAILS (LAT/LONG)

Name	TVD	+N/-S	+E/-W	Latitude	Longitude	Shape Point Polygon
TARGET BHL 2579'FSL, 1390'FWL	6000.0	-658.6	-1621.7	40° 11' 44.779 N	104° 50' 37.554 W	
HARDLINE 75'N OF BEDDO P25-20D BHL	7898.0	-583.6	-1521.7	40° 11' 45.520 N	104° 50' 36.265 W	

## SECTION DETAILS

Sec	MD	Inc	Azi	TVD	+N/-S	+E/-W	DLeg	TFace	VSec	Target
1	0.0	0.00	0.00	0.0	0.0	0.0	0.00	0.00	0.0	
2	800.0	0.00	0.00	800.0	0.0	0.0	0.00	0.00	0.0	
3	1050.0	5.00	270.00	1049.7	0.0	-10.9	2.00	270.00	10.1	
4	2012.2	23.76	247.22	1978.0	-75.8	-233.7	2.00	-28.25	245.0	
5	5145.5	23.76	247.22	4845.7	-564.5	-1397.7	0.00	0.00	1507.4	
6	6333.6	0.00	0.00	6000.0	-658.6	-1621.7	2.00	180.00	1750.3	TARGET BHL 2579'FSL, 1390'FWL
7	8231.6	0.00	0.00	7898.0	-658.6	-1621.7	0.00	0.00	1750.3	



## **Directional**

### **NOBLE ENERGY INC WELD COUNTY CO**

**SEC.25-T3N-R67W**

**BEDDO P25-22D Pad Sec.25-T3N-R67W**

**BEDDO P25-20D**

**Wellbore #1**

**Plan: Noble BEDDO P25-20D Plan #1 (9-30-09)**

### **Standard Planning Report**

**30 September, 2009**





Database:	EDM den0-adp01 Server Data	Local Co-ordinate Reference:	Well BEDDO P25-20D
Company:	NOBLE ENERGY INC WELD COUNTY CO	TVD Reference:	WELL @ 4818.0ft (Original Well Elev)
Project:	SEC.25-T3N-R67W	MD Reference:	WELL @ 4818.0ft (Original Well Elev)
Site:	BEDDO P25-22D Pad Sec.25-T3N-R67W	North Reference:	True
Well:	BEDDO P25-20D	Survey Calculation Method:	Minimum Curvature
Wellbore:	Wellbore #1		
Design:	Noble BEDDO P25-20D Plan #1 (9-30-09)		

Project	SEC.25-T3N-R67W, Weld County, Colorado		
Map System:	US State Plane 1983	System Datum:	Mean Sea Level
Geo Datum:	North American Datum 1983		Using Well Reference Point
Map Zone:	Colorado Northern Zone		Using geodetic scale factor

Site	BEDDO P25-22D Pad Sec.25-T3N-R67W				
Site Position:		Northing:	1,315,639.93ft	Latitude:	40° 11' 52.548 N
From:	Lat/Long	Easting:	3,185,092.08ft	Longitude:	104° 50' 14.604 W
Position Uncertainty:	0.0 ft	Slot Radius:	"	Grid Convergence:	0.43 °

Well	BEDDO P25-20D					
Well Position	+N/-S	-127.5 ft	Northing:	1,315,511.24 ft	Latitude:	40° 11' 51.288 N
	+E/-W	-159.2 ft	Easting:	3,184,933.81 ft	Longitude:	104° 50' 16.656 W
Position Uncertainty	0.0 ft	Wellhead Elevation:	ft	Ground Level:	4,805.0 ft	

Wellbore	Wellbore #1				
----------	-------------	--	--	--	--

Magnetics	Model Name	Sample Date	Declination (°)	Dip Angle (°)	Field Strength (nT)
	IGRF200510	9/14/2009	9.08	66.94	53,221

Design	Noble BEDDO P25-20D Plan #1 (9-30-09)			
Audit Notes:				
Version:	Phase:	PROTOTYPE	Tie On Depth:	0.0
Vertical Section:	Depth From (TVD) (ft)	+N/-S (ft)	+E/-W (ft)	Direction (°)
	0.0	0.0	0.0	247.90

Plan Sections										
Measured Depth (ft)	Inclination (°)	Azimuth (°)	Vertical Depth (ft)	+N/-S (ft)	+E/-W (ft)	Dogleg Rate (°/100ft)	Build Rate (°/100ft)	Turn Rate (°/100ft)	TFO (°)	Target
0.0	0.00	0.00	0.0	0.0	0.0	0.00	0.00	0.00	0.00	
800.0	0.00	0.00	800.0	0.0	0.0	0.00	0.00	0.00	0.00	
1,050.0	5.00	270.00	1,049.7	0.0	-10.9	2.00	2.00	0.00	270.00	
2,012.2	23.76	247.22	1,978.0	-75.8	-233.7	2.00	1.95	-2.37	-28.25	
5,145.5	23.76	247.22	4,845.7	-564.5	-1,397.7	0.00	0.00	0.00	0.00	
6,333.6	0.00	0.00	6,000.0	-658.6	-1,621.7	2.00	-2.00	0.00	180.00	TARGET BHL 257°
8,231.6	0.00	0.00	7,898.0	-658.6	-1,621.7	0.00	0.00	0.00	0.00	

Database: EDM den0-adp01 Server Data  
 Company: NOBLE ENERGY INC WELD COUNTY CO  
 Project: SEC.25-T3N-R67W  
 Site: BEDDO P25-22D Pad Sec.25-T3N-R67W  
 Well: BEDDO P25-20D  
 Wellbore: Wellbore #1  
 Design: Noble BEDDO P25-20D Plan #1 (9-30-09)

Local Co-ordinate Reference: Well BEDDO P25-20D  
 TVD Reference: WELL @ 4818.0ft (Original Well Elev)  
 MD Reference: WELL @ 4818.0ft (Original Well Elev)  
 North Reference: True  
 Survey Calculation Method: Minimum Curvature

## Planned Survey

Measured Depth (ft)	Inclination (°)	Azimuth (°)	Vertical Depth (ft)	+N/-S (ft)	+E/-W (ft)	Vertical Section (ft)	Dogleg Rate (°/100ft)	Build Rate (°/100ft)	Turn Rate (°/100ft)
0.0	0.00	0.00	0.0	0.0	0.0	0.0	0.00	0.00	0.00
40.0	0.00	0.00	40.0	0.0	0.0	0.0	0.00	0.00	0.00
80.0	0.00	0.00	80.0	0.0	0.0	0.0	0.00	0.00	0.00
120.0	0.00	0.00	120.0	0.0	0.0	0.0	0.00	0.00	0.00
160.0	0.00	0.00	160.0	0.0	0.0	0.0	0.00	0.00	0.00
200.0	0.00	0.00	200.0	0.0	0.0	0.0	0.00	0.00	0.00
240.0	0.00	0.00	240.0	0.0	0.0	0.0	0.00	0.00	0.00
280.0	0.00	0.00	280.0	0.0	0.0	0.0	0.00	0.00	0.00
320.0	0.00	0.00	320.0	0.0	0.0	0.0	0.00	0.00	0.00
360.0	0.00	0.00	360.0	0.0	0.0	0.0	0.00	0.00	0.00
400.0	0.00	0.00	400.0	0.0	0.0	0.0	0.00	0.00	0.00
440.0	0.00	0.00	440.0	0.0	0.0	0.0	0.00	0.00	0.00
480.0	0.00	0.00	480.0	0.0	0.0	0.0	0.00	0.00	0.00
520.0	0.00	0.00	520.0	0.0	0.0	0.0	0.00	0.00	0.00
560.0	0.00	0.00	560.0	0.0	0.0	0.0	0.00	0.00	0.00
600.0	0.00	0.00	600.0	0.0	0.0	0.0	0.00	0.00	0.00
640.0	0.00	0.00	640.0	0.0	0.0	0.0	0.00	0.00	0.00
680.0	0.00	0.00	680.0	0.0	0.0	0.0	0.00	0.00	0.00
720.0	0.00	0.00	720.0	0.0	0.0	0.0	0.00	0.00	0.00
760.0	0.00	0.00	760.0	0.0	0.0	0.0	0.00	0.00	0.00
800.0	0.00	0.00	800.0	0.0	0.0	0.0	0.00	0.00	0.00
840.0	0.80	270.00	840.0	0.0	-0.3	0.3	2.00	2.00	0.00
880.0	1.60	270.00	880.0	0.0	-1.1	1.0	2.00	2.00	0.00
920.0	2.40	270.00	920.0	0.0	-2.5	2.3	2.00	2.00	0.00
960.0	3.20	270.00	959.9	0.0	-4.5	4.1	2.00	2.00	0.00
1,000.0	4.00	270.00	999.8	0.0	-7.0	6.5	2.00	2.00	0.00
1,040.0	4.80	270.00	1,039.7	0.0	-10.0	9.3	2.00	2.00	0.00
1,080.0	5.00	270.00	1,049.7	0.0	-10.9	10.1	2.00	2.00	0.00
1,080.0	5.54	267.06	1,079.6	-0.1	-13.7	12.7	2.00	1.79	-9.82
1,120.0	6.27	263.92	1,119.3	-0.4	-17.8	16.6	2.00	1.83	-7.84
1,160.0	7.02	261.45	1,159.1	-1.0	-22.3	21.1	2.00	1.87	-6.19
1,200.0	7.77	259.45	1,198.7	-1.9	-27.4	26.1	2.00	1.89	-5.00
1,240.0	8.54	257.80	1,238.3	-3.0	-33.0	31.7	2.00	1.91	-4.11
1,280.0	9.31	256.43	1,277.9	-4.4	-39.0	37.8	2.00	1.93	-3.44
1,320.0	10.09	255.26	1,317.3	-6.0	-45.6	44.5	2.00	1.94	-2.91
1,360.0	10.86	254.26	1,356.6	-7.9	-52.6	51.7	2.00	1.95	-2.50
1,400.0	11.65	253.40	1,395.8	-10.1	-60.1	59.5	2.00	1.95	-2.17
1,440.0	12.43	252.64	1,435.0	-12.5	-68.0	67.8	2.00	1.96	-1.90
1,480.0	13.22	251.97	1,474.0	-15.2	-76.5	76.6	2.00	1.97	-1.68
1,520.0	14.00	251.37	1,512.8	-18.2	-85.4	86.0	2.00	1.97	-1.49
1,560.0	14.79	250.84	1,551.6	-21.4	-94.8	95.9	2.00	1.97	-1.34
1,600.0	15.58	250.36	1,590.2	-24.9	-104.7	106.4	2.00	1.98	-1.20
1,640.0	16.37	249.92	1,628.6	-28.7	-115.1	117.4	2.00	1.98	-1.09
1,680.0	17.17	249.52	1,666.9	-32.7	-125.9	128.9	2.00	1.98	-0.99
1,720.0	17.96	249.16	1,705.1	-36.9	-137.2	141.0	2.00	1.98	-0.91
1,760.0	18.75	248.83	1,743.0	-41.4	-149.0	153.6	2.00	1.98	-0.83
1,800.0	19.54	248.52	1,780.8	-46.2	-161.2	166.7	2.00	1.98	-0.77
1,840.0	20.34	248.24	1,818.4	-51.2	-173.9	180.4	2.00	1.99	-0.71
1,880.0	21.13	247.97	1,855.8	-56.5	-187.0	194.5	2.00	1.99	-0.66
1,920.0	21.93	247.73	1,893.0	-62.0	-200.6	209.2	2.00	1.99	-0.61
1,960.0	22.72	247.50	1,930.0	-67.8	-214.7	224.4	2.00	1.99	-0.57
2,000.0	23.52	247.29	1,966.8	-73.9	-229.2	240.1	2.00	1.99	-0.54
2,012.2	23.76	247.22	1,978.0	-75.8	-233.7	245.0	2.00	1.99	-0.51
2,040.0	23.76	247.22	2,003.5	-80.1	-244.0	256.2	0.00	0.00	0.00



Database:	EDM den0-adp01 Server Data	Local Co-ordinate Reference:	Well BEDDO P25-20D
Company:	NOBLE ENERGY INC WELD COUNTY CO	TVD Reference:	WELL @ 4818.0ft (Original Well Elev)
Project:	SEC.25-T3N-R67W	MD Reference:	WELL @ 4818.0ft (Original Well Elev)
Site:	BEDDO P25-22D Pad Sec.25-T3N-R67W	North Reference:	True
Well:	BEDDO P25-20D	Survey Calculation Method:	Minimum Curvature
Wellbore:	Wellbore #1		
Design:	Noble BEDDO P25-20D Plan #1 (9-30-09)		

Planned Survey									
Measured Depth (ft)	Inclination (°)	Azimuth (°)	Vertical Depth (ft)	+N/-S (ft)	+E/-W (ft)	Vertical Section (ft)	Dogleg Rate (°/100ft)	Build Rate (°/100ft)	Turn Rate (°/100ft)
2,080.0	23.76	247.22	2,040.1	-86.3	-258.9	272.3	0.00	0.00	0.00
2,120.0	23.76	247.22	2,076.7	-92.6	-273.7	288.4	0.00	0.00	0.00
2,160.0	23.76	247.22	2,113.3	-98.8	-288.6	304.6	0.00	0.00	0.00
2,200.0	23.76	247.22	2,149.9	-105.1	-303.4	320.7	0.00	0.00	0.00
2,240.0	23.76	247.22	2,186.5	-111.3	-318.3	336.8	0.00	0.00	0.00
2,280.0	23.76	247.22	2,223.1	-117.5	-333.2	352.9	0.00	0.00	0.00
2,320.0	23.76	247.22	2,259.7	-123.8	-348.0	369.0	0.00	0.00	0.00
2,360.0	23.76	247.22	2,296.3	-130.0	-362.9	385.1	0.00	0.00	0.00
2,400.0	23.76	247.22	2,332.9	-136.3	-377.7	401.3	0.00	0.00	0.00
2,440.0	23.76	247.22	2,369.5	-142.5	-392.6	417.4	0.00	0.00	0.00
2,480.0	23.76	247.22	2,406.2	-148.7	-407.5	433.5	0.00	0.00	0.00
2,520.0	23.76	247.22	2,442.8	-155.0	-422.3	449.6	0.00	0.00	0.00
2,560.0	23.76	247.22	2,479.4	-161.2	-437.2	465.7	0.00	0.00	0.00
2,600.0	23.76	247.22	2,516.0	-167.5	-452.0	481.8	0.00	0.00	0.00
2,640.0	23.76	247.22	2,552.6	-173.7	-466.9	498.0	0.00	0.00	0.00
2,680.0	23.76	247.22	2,589.2	-179.9	-481.8	514.1	0.00	0.00	0.00
2,720.0	23.76	247.22	2,625.8	-186.2	-496.6	530.2	0.00	0.00	0.00
2,760.0	23.76	247.22	2,662.4	-192.4	-511.5	546.3	0.00	0.00	0.00
2,800.0	23.76	247.22	2,699.0	-198.7	-526.4	562.4	0.00	0.00	0.00
2,840.0	23.76	247.22	2,735.6	-204.9	-541.2	578.5	0.00	0.00	0.00
2,880.0	23.76	247.22	2,772.2	-211.1	-556.1	594.7	0.00	0.00	0.00
2,920.0	23.76	247.22	2,808.9	-217.4	-570.9	610.8	0.00	0.00	0.00
2,960.0	23.76	247.22	2,845.5	-223.6	-585.8	626.9	0.00	0.00	0.00
3,000.0	23.76	247.22	2,882.1	-229.9	-600.7	643.0	0.00	0.00	0.00
3,040.0	23.76	247.22	2,918.7	-236.1	-615.5	659.1	0.00	0.00	0.00
3,080.0	23.76	247.22	2,955.3	-242.3	-630.4	675.2	0.00	0.00	0.00
3,120.0	23.76	247.22	2,991.9	-248.6	-645.2	691.3	0.00	0.00	0.00
3,160.0	23.76	247.22	3,028.5	-254.8	-660.1	707.5	0.00	0.00	0.00
3,200.0	23.76	247.22	3,065.1	-261.1	-675.0	723.6	0.00	0.00	0.00
3,240.0	23.76	247.22	3,101.7	-267.3	-689.8	739.7	0.00	0.00	0.00
3,280.0	23.76	247.22	3,138.3	-273.5	-704.7	755.8	0.00	0.00	0.00
3,320.0	23.76	247.22	3,174.9	-279.8	-719.5	771.9	0.00	0.00	0.00
3,360.0	23.76	247.22	3,211.6	-286.0	-734.4	788.0	0.00	0.00	0.00
3,400.0	23.76	247.22	3,248.2	-292.3	-749.3	804.2	0.00	0.00	0.00
3,440.0	23.76	247.22	3,284.8	-298.5	-764.1	820.3	0.00	0.00	0.00
3,480.0	23.76	247.22	3,321.4	-304.7	-779.0	836.4	0.00	0.00	0.00
3,520.0	23.76	247.22	3,358.0	-311.0	-793.8	852.5	0.00	0.00	0.00
3,560.0	23.76	247.22	3,394.6	-317.2	-808.7	868.6	0.00	0.00	0.00
3,600.0	23.76	247.22	3,431.2	-323.5	-823.6	884.7	0.00	0.00	0.00
3,640.0	23.76	247.22	3,467.8	-329.7	-838.4	900.9	0.00	0.00	0.00
3,680.0	23.76	247.22	3,504.4	-335.9	-853.3	917.0	0.00	0.00	0.00
3,720.0	23.76	247.22	3,541.0	-342.2	-868.1	933.1	0.00	0.00	0.00
3,760.0	23.76	247.22	3,577.6	-348.4	-883.0	949.2	0.00	0.00	0.00
3,800.0	23.76	247.22	3,614.3	-354.7	-897.9	965.3	0.00	0.00	0.00
3,840.0	23.76	247.22	3,650.9	-360.9	-912.7	981.4	0.00	0.00	0.00
3,880.0	23.76	247.22	3,687.5	-367.1	-927.6	997.6	0.00	0.00	0.00
3,920.0	23.76	247.22	3,724.1	-373.4	-942.5	1,013.7	0.00	0.00	0.00
3,960.0	23.76	247.22	3,760.7	-379.6	-957.3	1,029.8	0.00	0.00	0.00
4,000.0	23.76	247.22	3,797.3	-385.9	-972.2	1,045.9	0.00	0.00	0.00
4,040.0	23.76	247.22	3,833.9	-392.1	-987.0	1,062.0	0.00	0.00	0.00
4,080.0	23.76	247.22	3,870.5	-398.3	-1,001.9	1,078.1	0.00	0.00	0.00
4,120.0	23.76	247.22	3,907.1	-404.6	-1,016.8	1,094.3	0.00	0.00	0.00
4,160.0	23.76	247.22	3,943.7	-410.8	-1,031.6	1,110.4	0.00	0.00	0.00
4,200.0	23.76	247.22	3,980.3	-417.1	-1,046.5	1,126.5	0.00	0.00	0.00



Database:	EDM den0-adp01 Server Data	Local Co-ordinate Reference:	Well BEDDO P25-20D
Company:	NOBLE ENERGY INC WELD COUNTY CO	TVD Reference:	WELL @ 4818.0ft (Original Well Elev)
Project:	SEC.25-T3N-R67W	MD Reference:	WELL @ 4818.0ft (Original Well Elev)
Site:	BEDDO P25-22D Pad Sec.25-T3N-R67W	North Reference:	True
Well:	BEDDO P25-20D	Survey Calculation Method:	Minimum Curvature
Wellbore:	Wellbore #1		
Design:	Noble BEDDO P25-20D Plan #1 (9-30-09)		

Planned Survey

Measured Depth (ft)	Inclination (°)	Azimuth (°)	Vertical Depth (ft)	+N/-S (ft)	+E/-W (ft)	Vertical Section (ft)	Dogleg Rate (°/100ft)	Build Rate (°/100ft)	Turn Rate (°/100ft)
4,240.0	23.76	247.22	4,017.0	-423.3	-1,061.3	1,142.6	0.00	0.00	0.00
4,280.0	23.76	247.22	4,053.6	-429.5	-1,076.2	1,158.7	0.00	0.00	0.00
4,320.0	23.76	247.22	4,090.2	-435.8	-1,091.1	1,174.8	0.00	0.00	0.00
4,360.0	23.76	247.22	4,126.8	-442.0	-1,105.9	1,191.0	0.00	0.00	0.00
4,400.0	23.76	247.22	4,163.4	-448.2	-1,120.8	1,207.1	0.00	0.00	0.00
4,440.0	23.76	247.22	4,200.0	-454.5	-1,135.6	1,223.2	0.00	0.00	0.00
4,480.0	23.76	247.22	4,236.6	-460.7	-1,150.5	1,239.3	0.00	0.00	0.00
4,520.0	23.76	247.22	4,273.2	-467.0	-1,165.4	1,255.4	0.00	0.00	0.00
4,560.0	23.76	247.22	4,309.8	-473.2	-1,180.2	1,271.5	0.00	0.00	0.00
4,600.0	23.76	247.22	4,346.4	-479.4	-1,195.1	1,287.7	0.00	0.00	0.00
4,640.0	23.76	247.22	4,383.0	-485.7	-1,209.9	1,303.8	0.00	0.00	0.00
4,680.0	23.76	247.22	4,419.7	-491.9	-1,224.8	1,319.9	0.00	0.00	0.00
4,720.0	23.76	247.22	4,456.3	-498.2	-1,239.7	1,336.0	0.00	0.00	0.00
4,760.0	23.76	247.22	4,492.9	-504.4	-1,254.5	1,352.1	0.00	0.00	0.00
4,800.0	23.76	247.22	4,529.5	-510.6	-1,269.4	1,368.2	0.00	0.00	0.00
4,840.0	23.76	247.22	4,566.1	-516.9	-1,284.3	1,384.4	0.00	0.00	0.00
4,880.0	23.76	247.22	4,602.7	-523.1	-1,299.1	1,400.5	0.00	0.00	0.00
4,920.0	23.76	247.22	4,639.3	-529.4	-1,314.0	1,416.6	0.00	0.00	0.00
4,960.0	23.76	247.22	4,675.9	-535.6	-1,328.8	1,432.7	0.00	0.00	0.00
5,000.0	23.76	247.22	4,712.5	-541.8	-1,343.7	1,448.8	0.00	0.00	0.00
5,040.0	23.76	247.22	4,749.1	-548.1	-1,358.6	1,464.9	0.00	0.00	0.00
5,080.0	23.76	247.22	4,785.7	-554.3	-1,373.4	1,481.1	0.00	0.00	0.00
5,120.0	23.76	247.22	4,822.4	-560.6	-1,388.3	1,497.2	0.00	0.00	0.00
5,145.5	23.76	247.22	4,845.7	-564.5	-1,397.7	1,507.4	0.00	0.00	0.00
5,160.0	23.47	247.22	4,859.0	-566.8	-1,403.1	1,513.3	2.00	-2.00	0.00
5,200.0	22.67	247.22	4,895.8	-572.9	-1,417.6	1,528.9	2.00	-2.00	0.00
5,240.0	21.87	247.22	4,932.8	-578.7	-1,431.5	1,544.1	2.00	-2.00	0.00
5,280.0	21.07	247.22	4,970.0	-584.4	-1,445.0	1,558.7	2.00	-2.00	0.00
5,320.0	20.27	247.22	5,007.4	-589.9	-1,458.1	1,572.9	2.00	-2.00	0.00
5,360.0	19.47	247.22	5,045.1	-595.1	-1,470.6	1,586.4	2.00	-2.00	0.00
5,400.0	18.67	247.22	5,082.9	-600.2	-1,482.6	1,599.5	2.00	-2.00	0.00
5,440.0	17.87	247.22	5,120.8	-605.0	-1,494.2	1,612.1	2.00	-2.00	0.00
5,480.0	17.07	247.22	5,159.0	-609.7	-1,505.3	1,624.1	2.00	-2.00	0.00
5,520.0	16.27	247.22	5,197.3	-614.1	-1,515.9	1,635.5	2.00	-2.00	0.00
5,560.0	15.47	247.22	5,235.8	-618.4	-1,525.9	1,646.5	2.00	-2.00	0.00
5,600.0	14.67	247.22	5,274.4	-622.4	-1,535.5	1,656.9	2.00	-2.00	0.00
5,640.0	13.87	247.22	5,313.2	-626.2	-1,544.6	1,666.7	2.00	-2.00	0.00
5,680.0	13.07	247.22	5,352.1	-629.8	-1,553.2	1,676.1	2.00	-2.00	0.00
5,720.0	12.27	247.22	5,391.1	-633.2	-1,561.3	1,684.8	2.00	-2.00	0.00
5,760.0	11.47	247.22	5,430.2	-636.4	-1,568.9	1,693.1	2.00	-2.00	0.00
5,800.0	10.67	247.22	5,469.5	-639.4	-1,576.0	1,700.7	2.00	-2.00	0.00
5,840.0	9.87	247.22	5,508.9	-642.1	-1,582.6	1,707.9	2.00	-2.00	0.00
5,880.0	9.07	247.22	5,548.3	-644.7	-1,588.6	1,714.5	2.00	-2.00	0.00
5,920.0	8.27	247.22	5,587.9	-647.0	-1,594.2	1,720.5	2.00	-2.00	0.00
5,960.0	7.47	247.22	5,627.5	-649.1	-1,599.2	1,726.0	2.00	-2.00	0.00
6,000.0	6.67	247.22	5,667.2	-651.0	-1,603.8	1,730.9	2.00	-2.00	0.00
6,040.0	5.87	247.22	5,706.9	-652.7	-1,607.8	1,735.3	2.00	-2.00	0.00
6,080.0	5.07	247.22	5,746.8	-654.2	-1,611.3	1,739.1	2.00	-2.00	0.00
6,120.0	4.27	247.22	5,786.6	-655.5	-1,614.3	1,742.3	2.00	-2.00	0.00
6,160.0	3.47	247.22	5,826.5	-656.5	-1,616.8	1,745.0	2.00	-2.00	0.00
6,200.0	2.67	247.22	5,866.5	-657.4	-1,618.8	1,747.2	2.00	-2.00	0.00
6,240.0	1.87	247.22	5,906.4	-658.0	-1,620.3	1,748.8	2.00	-2.00	0.00
6,280.0	1.07	247.22	5,946.4	-658.4	-1,621.2	1,749.8	2.00	-2.00	0.00
6,320.0	0.27	247.22	5,986.4	-658.5	-1,621.6	1,750.2	2.00	-2.00	0.00



Database: EDM den0-adp01 Server Data  
 Company: NOBLE ENERGY INC WELD COUNTY CO  
 Project: SEC.25-T3N-R67W  
 Site: BEDDO P25-22D Pad Sec.25-T3N-R67W  
 Well: BEDDO P25-20D  
 Wellbore: Wellbore #1  
 Design: Noble BEDDO P25-20D Plan #1 (9-30-09)

Local Co-ordinate Reference: Well BEDDO P25-20D  
 TVD Reference: WELL @ 4818.0ft (Original Well Elev)  
 MD Reference: WELL @ 4818.0ft (Original Well Elev)  
 North Reference: True  
 Survey Calculation Method: Minimum Curvature

## Planned Survey

Measured Depth (ft)	Inclination (°)	Azimuth (°)	Vertical Depth (ft)	+N/-S (ft)	+E/-W (ft)	Vertical Section (ft)	Dogleg Rate (°/100ft)	Build Rate (°/100ft)	Turn Rate (°/100ft)
6,333.6	0.00	0.00	6,000.0	-658.6	-1,621.7	1,750.3	2.00	-2.00	0.00
<b>TARGET BHL 2579'FSL, 1390'FWL</b>									
6,360.0	0.00	0.00	6,026.4	-658.6	-1,621.7	1,750.3	0.00	0.00	0.00
6,400.0	0.00	0.00	6,066.4	-658.6	-1,621.7	1,750.3	0.00	0.00	0.00
6,440.0	0.00	0.00	6,106.4	-658.6	-1,621.7	1,750.3	0.00	0.00	0.00
6,480.0	0.00	0.00	6,146.4	-658.6	-1,621.7	1,750.3	0.00	0.00	0.00
6,520.0	0.00	0.00	6,186.4	-658.6	-1,621.7	1,750.3	0.00	0.00	0.00
6,560.0	0.00	0.00	6,226.4	-658.6	-1,621.7	1,750.3	0.00	0.00	0.00
6,600.0	0.00	0.00	6,266.4	-658.6	-1,621.7	1,750.3	0.00	0.00	0.00
6,640.0	0.00	0.00	6,306.4	-658.6	-1,621.7	1,750.3	0.00	0.00	0.00
6,680.0	0.00	0.00	6,346.4	-658.6	-1,621.7	1,750.3	0.00	0.00	0.00
6,720.0	0.00	0.00	6,386.4	-658.6	-1,621.7	1,750.3	0.00	0.00	0.00
6,760.0	0.00	0.00	6,426.4	-658.6	-1,621.7	1,750.3	0.00	0.00	0.00
6,800.0	0.00	0.00	6,466.4	-658.6	-1,621.7	1,750.3	0.00	0.00	0.00
6,840.0	0.00	0.00	6,506.4	-658.6	-1,621.7	1,750.3	0.00	0.00	0.00
6,880.0	0.00	0.00	6,546.4	-658.6	-1,621.7	1,750.3	0.00	0.00	0.00
6,920.0	0.00	0.00	6,586.4	-658.6	-1,621.7	1,750.3	0.00	0.00	0.00
6,960.0	0.00	0.00	6,626.4	-658.6	-1,621.7	1,750.3	0.00	0.00	0.00
7,000.0	0.00	0.00	6,666.4	-658.6	-1,621.7	1,750.3	0.00	0.00	0.00
7,040.0	0.00	0.00	6,706.4	-658.6	-1,621.7	1,750.3	0.00	0.00	0.00
7,080.0	0.00	0.00	6,746.4	-658.6	-1,621.7	1,750.3	0.00	0.00	0.00
7,120.0	0.00	0.00	6,786.4	-658.6	-1,621.7	1,750.3	0.00	0.00	0.00
7,160.0	0.00	0.00	6,826.4	-658.6	-1,621.7	1,750.3	0.00	0.00	0.00
7,200.0	0.00	0.00	6,866.4	-658.6	-1,621.7	1,750.3	0.00	0.00	0.00
7,240.0	0.00	0.00	6,906.4	-658.6	-1,621.7	1,750.3	0.00	0.00	0.00
7,280.0	0.00	0.00	6,946.4	-658.6	-1,621.7	1,750.3	0.00	0.00	0.00
7,320.0	0.00	0.00	6,986.4	-658.6	-1,621.7	1,750.3	0.00	0.00	0.00
7,346.6	0.00	0.00	7,013.0	-658.6	-1,621.7	1,750.3	0.00	0.00	0.00
<b>NIOBRARA</b>									
7,360.0	0.00	0.00	7,026.4	-658.6	-1,621.7	1,750.3	0.00	0.00	0.00
7,400.0	0.00	0.00	7,066.4	-658.6	-1,621.7	1,750.3	0.00	0.00	0.00
7,440.0	0.00	0.00	7,106.4	-658.6	-1,621.7	1,750.3	0.00	0.00	0.00
7,480.0	0.00	0.00	7,146.4	-658.6	-1,621.7	1,750.3	0.00	0.00	0.00
7,520.0	0.00	0.00	7,186.4	-658.6	-1,621.7	1,750.3	0.00	0.00	0.00
7,560.0	0.00	0.00	7,226.4	-658.6	-1,621.7	1,750.3	0.00	0.00	0.00
7,600.0	0.00	0.00	7,266.4	-658.6	-1,621.7	1,750.3	0.00	0.00	0.00
7,636.6	0.00	0.00	7,303.0	-658.6	-1,621.7	1,750.3	0.00	0.00	0.00
<b>CODELL</b>									
7,640.0	0.00	0.00	7,306.4	-658.6	-1,621.7	1,750.3	0.00	0.00	0.00
7,680.0	0.00	0.00	7,346.4	-658.6	-1,621.7	1,750.3	0.00	0.00	0.00
7,720.0	0.00	0.00	7,386.4	-658.6	-1,621.7	1,750.3	0.00	0.00	0.00
7,760.0	0.00	0.00	7,426.4	-658.6	-1,621.7	1,750.3	0.00	0.00	0.00
7,800.0	0.00	0.00	7,466.4	-658.6	-1,621.7	1,750.3	0.00	0.00	0.00
7,840.0	0.00	0.00	7,506.4	-658.6	-1,621.7	1,750.3	0.00	0.00	0.00
7,880.0	0.00	0.00	7,546.4	-658.6	-1,621.7	1,750.3	0.00	0.00	0.00
7,920.0	0.00	0.00	7,586.4	-658.6	-1,621.7	1,750.3	0.00	0.00	0.00
7,960.0	0.00	0.00	7,626.4	-658.6	-1,621.7	1,750.3	0.00	0.00	0.00
8,000.0	0.00	0.00	7,666.4	-658.6	-1,621.7	1,750.3	0.00	0.00	0.00
8,040.0	0.00	0.00	7,706.4	-658.6	-1,621.7	1,750.3	0.00	0.00	0.00
8,080.0	0.00	0.00	7,746.4	-658.6	-1,621.7	1,750.3	0.00	0.00	0.00
8,081.6	0.00	0.00	7,748.0	-658.6	-1,621.7	1,750.3	0.00	0.00	0.00
<b>J-SAND</b>									
8,120.0	0.00	0.00	7,786.4	-658.6	-1,621.7	1,750.3	0.00	0.00	0.00

Database: EDM den0-adp01 Server Data  
 Company: NOBLE ENERGY INC WELD COUNTY CO  
 Project: SEC.25-T3N-R67W  
 Site: BEDDO P25-22D Pad Sec.25-T3N-R67W  
 Well: BEDDO P25-20D  
 Wellbore: Wellbore #1  
 Design: Noble BEDDO P25-20D Plan #1 (9-30-09)

Local Co-ordinate Reference: Well BEDDO P25-20D  
 TVD Reference: WELL @ 4818.0ft (Original Well Elev)  
 MD Reference: WELL @ 4818.0ft (Original Well Elev)  
 North Reference: True  
 Survey Calculation Method: Minimum Curvature

**Planned Survey**

Measured Depth (ft)	Inclination (°)	Azimuth (°)	Vertical Depth (ft)	+N/-S (ft)	+E/-W (ft)	Vertical Section (ft)	Dogleg Rate (°/100ft)	Build Rate (°/100ft)	Turn Rate (°/100ft)
8,160.0	0.00	0.00	7,826.4	-658.6	-1,621.7	1,750.3	0.00	0.00	0.00
8,200.0	0.00	0.00	7,866.4	-658.6	-1,621.7	1,750.3	0.00	0.00	0.00
8,231.6	0.00	0.00	7,898.0	-658.6	-1,621.7	1,750.3	0.00	0.00	0.00

HARDLINE 75°N OF BEDDO P25-20D BHL

**Targets**
**Target Name**

- hit/miss target	Dip Angle (°)	Dip Dir. (°)	TVD (ft)	+N/-S (ft)	+E/-W (ft)	Northing (ft)	Easting (ft)	Latitude	Longitude
- Shape									
HARDLINE 75°N OF E	0.00	0.00	7,898.0	-583.6	-1,521.7	1,314,916.32	3,183,416.58	40° 11' 45.520 N	104° 50' 36.265 W
- plan misses target center by 124.9ft at 8231.6ft MD (7898.0 TVD, -658.6 N, -1621.7 E)									
- Polygon									
Point 1			7,898.0	0.0	0.0	1,314,916.32	3,183,416.58		
Point 2			7,898.0	0.0	-200.0	1,314,914.83	3,183,216.59		
TARGET BHL 2579°F	0.00	0.00	6,000.0	-658.6	-1,621.7	1,314,840.62	3,183,317.19	40° 11' 44.779 N	104° 50' 37.554 W
- plan hits target center									
- Point									

**Formations**

Measured Depth (ft)	Vertical Depth (ft)	Name	Lithology	Dip (°)	Dip Direction (°)
7,346.6	7,013.0	NIOBRARA		0.00	
7,636.6	7,303.0	CODELL		0.00	
8,081.6	7,748.0	J-SAND		0.00	