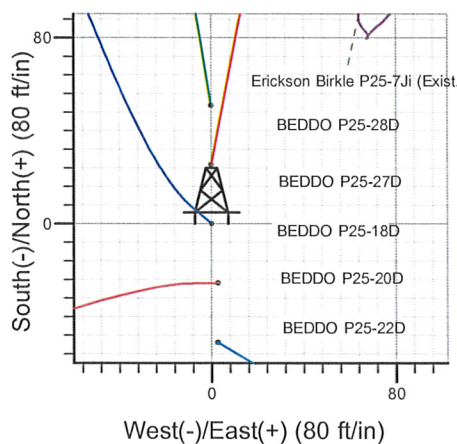
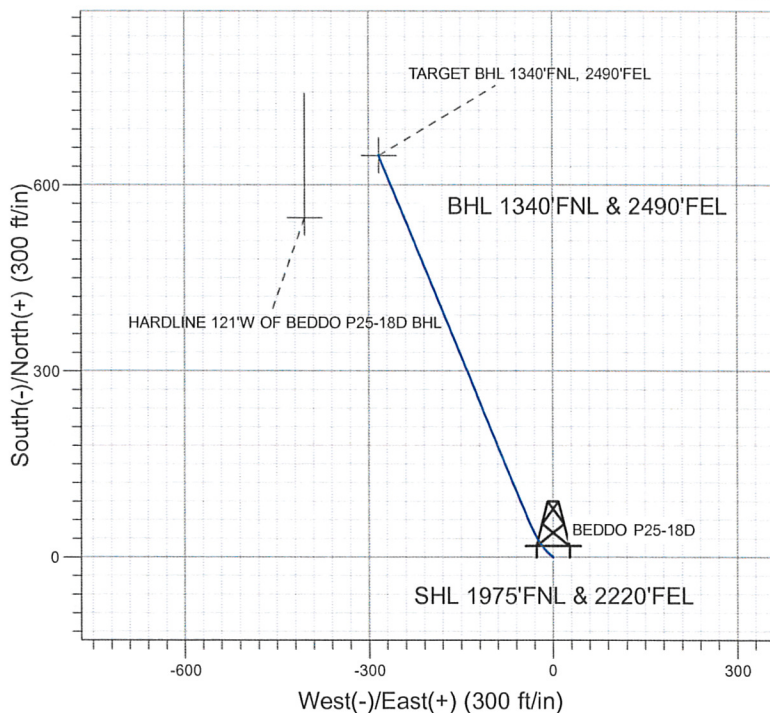
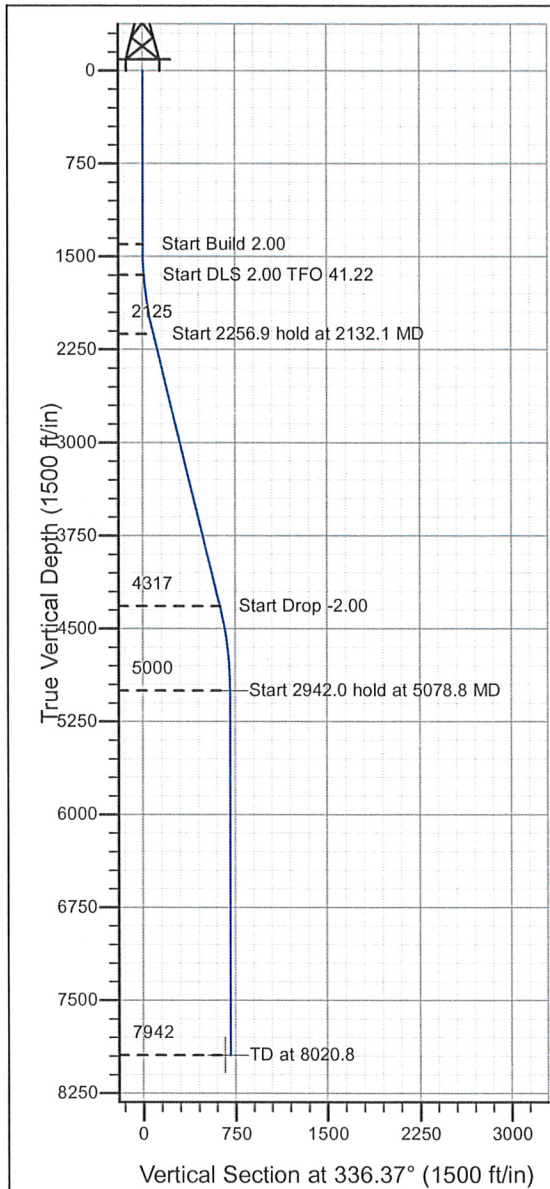


Well Name: BEDDO P25-18D

Surface Location: BEDDO P25-22D Pad Sec.25-T3N-R67W
 North American Datum 1983 , US State Plane 1983 , Colorado Northern Zone
 Ground Elevation: 4804.0
 +N/-S+E/-W Northing Easting Latitude Longitude Slot
 0.0 0.0 1315536.72 3184930.83 40° 11' 51.540 N 104° 50' 16.692 W
 Original Well Elev WELL @ 4817.0ft (Original Well Elev)

NOBLE ENERGY INC WELD COUNTY CO



BEDDO P25-22D Pad Sec.25-T3N-R67W
 BEDDO P25-18D
 Noble BEDDO P25-18D Plan #2 (9-30-09)
 13:13, October 01 2009



Azimuths to True North
 Magnetic North: 9.17°
 Magnetic Field
 Strength: 53281.6snT
 Dip Angle: 66.96°
 Date: 2/10/2009
 Model: IGRF200510

WELLBORE TARGET DETAILS (LAT/LONG)

Name	TVD	+N/-S	+E/-W	Latitude	Longitude	Shape
TARGET BHL 1340'FNL, 2490'FEL	5000.0	647.7	-283.4	40° 11' 57.941 N	104° 50' 20.345 W	Point
HARDLINE 121'W OF BEDDO P25-18D BHL	7942.0	547.7	-404.4	40° 11' 56.952 N	104° 50' 21.904 W	Polygon

SECTION DETAILS

Sec	MD	Inc	Azi	TVD	+N/-S	+E/-W	DLeg	TFace	VSec	Target
1	0.0	0.00	0.00	0.0	0.0	0.0	0.00	0.00	0.0	
2	1400.0	0.00	0.00	1400.0	0.0	0.0	0.00	0.00	0.0	
3	1650.0	5.00	310.00	1649.7	7.0	-8.4	2.00	310.00	9.8	
4	2132.1	13.80	337.57	2125.0	73.8	-46.5	2.00	41.22	86.2	
5	4389.0	13.80	337.57	4316.8	571.3	-251.9	0.00	0.00	624.4	
6	5078.8	0.00	0.00	5000.0	647.7	-283.4	2.00	180.00	707.0	TARGET BHL 1340'FNL, 2490'FEL
7	8020.8	0.00	0.00	7942.0	647.7	-283.4	0.00	0.00	707.0	



Directional

NOBLE ENERGY INC WELD COUNTY CO

SEC.25-T3N-R67W

BEDDO P25-22D Pad Sec.25-T3N-R67W

BEDDO P25-18D

BEDDO P25-18D

Plan: Noble BEDDO P25-18D Plan #2 (9-30-09)

Standard Planning Report

01 October, 2009



Database:	EDM den0-adp01 Server Data	Local Co-ordinate Reference:	Well BEDDO P25-18D
Company:	NOBLE ENERGY INC WELD COUNTY CO	TVD Reference:	WELL @ 4817.0ft (Original Well Elev)
Project:	SEC.25-T3N-R67W	MD Reference:	WELL @ 4817.0ft (Original Well Elev)
Site:	BEDDO P25-22D Pad Sec.25-T3N-R67W	North Reference:	True
Well:	BEDDO P25-18D	Survey Calculation Method:	Minimum Curvature
Wellbore:	BEDDO P25-18D		
Design:	Noble BEDDO P25-18D Plan #2 (9-30-09)		

Project	SEC.25-T3N-R67W, Weld County, Colorado		
Map System:	US State Plane 1983	System Datum:	Mean Sea Level
Geo Datum:	North American Datum 1983		Using Well Reference Point
Map Zone:	Colorado Northern Zone		Using geodetic scale factor

Site	BEDDO P25-22D Pad Sec.25-T3N-R67W				
Site Position:		Northing:	1,315,639.93 ft	Latitude:	40° 11' 52.548 N
From:	Lat/Long	Easting:	3,185,092.08 ft	Longitude:	104° 50' 14.604 W
Position Uncertainty:	0.0 ft	Slot Radius:	"	Grid Convergence:	0.43 °

Well		BEDDO P25-18D				
Well Position	+N/-S	-102.0 ft	Northing:	1,315,536.72 ft	Latitude:	40° 11' 51.540 N
	+E/-W	-162.0 ft	Easting:	3,184,930.83 ft	Longitude:	104° 50' 16.692 W
Position Uncertainty	0.0 ft	Wellhead Elevation:	ft	Ground Level:	4,804.0 ft	

Wellbore	BEDDO P25-18D				
Magnetics	Model Name	Sample Date	Declination (°)	Dip Angle (°)	Field Strength (nT)
	IGRF200510	2/10/2009	9.17	66.96	53,282

Design	Noble BEDDO P25-18D Plan #2 (9-30-09)			
Audit Notes:				
Version:	Phase:	PROTOTYPE	Tie On Depth:	0.0
Vertical Section:	Depth From (TVD) (ft)	+N/-S (ft)	+E/-W (ft)	Direction (°)
	0.0	0.0	0.0	336.37

Plan Sections										
Measured Depth (ft)	Inclination (°)	Azimuth (°)	Vertical Depth (ft)	+N/-S (ft)	+E/-W (ft)	Dogleg Rate (°/100ft)	Build Rate (°/100ft)	Turn Rate (°/100ft)	TFO (°)	Target
0.0	0.00	0.00	0.0	0.0	0.0	0.00	0.00	0.00	0.00	
1,400.0	0.00	0.00	1,400.0	0.0	0.0	0.00	0.00	0.00	0.00	
1,650.0	5.00	310.00	1,649.7	7.0	-8.4	2.00	2.00	0.00	310.00	
2,132.1	13.80	337.57	2,125.0	73.8	-46.5	2.00	1.82	5.72	41.22	
4,389.0	13.80	337.57	4,316.8	571.3	-251.9	0.00	0.00	0.00	0.00	
5,078.8	0.00	0.00	5,000.0	647.7	-283.4	2.00	-2.00	0.00	180.00	TARGET BHL 134C
8,020.8	0.00	0.00	7,942.0	647.7	-283.4	0.00	0.00	0.00	0.00	

Database:	EDM den0-adp01 Server Data	Local Co-ordinate Reference:	Well BEDDO P25-18D
Company:	NOBLE ENERGY INC WELD COUNTY CO	TVD Reference:	WELL @ 4817.0ft (Original Well Elev)
Project:	SEC.25-T3N-R67W	MD Reference:	WELL @ 4817.0ft (Original Well Elev)
Site:	BEDDO P25-22D Pad Sec.25-T3N-R67W	North Reference:	True
Well:	BEDDO P25-18D	Survey Calculation Method:	Minimum Curvature
Wellbore:	BEDDO P25-18D		
Design:	Noble BEDDO P25-18D Plan #2 (9-30-09)		

Planned Survey

Measured Depth (ft)	Inclination (°)	Azimuth (°)	Vertical Depth (ft)	+N/-S (ft)	+E/-W (ft)	Vertical Section (ft)	Dogleg Rate (°/100ft)	Build Rate (°/100ft)	Turn Rate (°/100ft)
0.0	0.00	0.00	0.0	0.0	0.0	0.0	0.00	0.00	0.00
40.0	0.00	0.00	40.0	0.0	0.0	0.0	0.00	0.00	0.00
80.0	0.00	0.00	80.0	0.0	0.0	0.0	0.00	0.00	0.00
120.0	0.00	0.00	120.0	0.0	0.0	0.0	0.00	0.00	0.00
160.0	0.00	0.00	160.0	0.0	0.0	0.0	0.00	0.00	0.00
200.0	0.00	0.00	200.0	0.0	0.0	0.0	0.00	0.00	0.00
240.0	0.00	0.00	240.0	0.0	0.0	0.0	0.00	0.00	0.00
280.0	0.00	0.00	280.0	0.0	0.0	0.0	0.00	0.00	0.00
320.0	0.00	0.00	320.0	0.0	0.0	0.0	0.00	0.00	0.00
360.0	0.00	0.00	360.0	0.0	0.0	0.0	0.00	0.00	0.00
400.0	0.00	0.00	400.0	0.0	0.0	0.0	0.00	0.00	0.00
440.0	0.00	0.00	440.0	0.0	0.0	0.0	0.00	0.00	0.00
480.0	0.00	0.00	480.0	0.0	0.0	0.0	0.00	0.00	0.00
520.0	0.00	0.00	520.0	0.0	0.0	0.0	0.00	0.00	0.00
560.0	0.00	0.00	560.0	0.0	0.0	0.0	0.00	0.00	0.00
600.0	0.00	0.00	600.0	0.0	0.0	0.0	0.00	0.00	0.00
640.0	0.00	0.00	640.0	0.0	0.0	0.0	0.00	0.00	0.00
680.0	0.00	0.00	680.0	0.0	0.0	0.0	0.00	0.00	0.00
720.0	0.00	0.00	720.0	0.0	0.0	0.0	0.00	0.00	0.00
760.0	0.00	0.00	760.0	0.0	0.0	0.0	0.00	0.00	0.00
800.0	0.00	0.00	800.0	0.0	0.0	0.0	0.00	0.00	0.00
840.0	0.00	0.00	840.0	0.0	0.0	0.0	0.00	0.00	0.00
880.0	0.00	0.00	880.0	0.0	0.0	0.0	0.00	0.00	0.00
920.0	0.00	0.00	920.0	0.0	0.0	0.0	0.00	0.00	0.00
960.0	0.00	0.00	960.0	0.0	0.0	0.0	0.00	0.00	0.00
1,000.0	0.00	0.00	1,000.0	0.0	0.0	0.0	0.00	0.00	0.00
1,040.0	0.00	0.00	1,040.0	0.0	0.0	0.0	0.00	0.00	0.00
1,080.0	0.00	0.00	1,080.0	0.0	0.0	0.0	0.00	0.00	0.00
1,120.0	0.00	0.00	1,120.0	0.0	0.0	0.0	0.00	0.00	0.00
1,160.0	0.00	0.00	1,160.0	0.0	0.0	0.0	0.00	0.00	0.00
1,200.0	0.00	0.00	1,200.0	0.0	0.0	0.0	0.00	0.00	0.00
1,240.0	0.00	0.00	1,240.0	0.0	0.0	0.0	0.00	0.00	0.00
1,280.0	0.00	0.00	1,280.0	0.0	0.0	0.0	0.00	0.00	0.00
1,320.0	0.00	0.00	1,320.0	0.0	0.0	0.0	0.00	0.00	0.00
1,360.0	0.00	0.00	1,360.0	0.0	0.0	0.0	0.00	0.00	0.00
1,400.0	0.00	0.00	1,400.0	0.0	0.0	0.0	0.00	0.00	0.00
1,440.0	0.80	310.00	1,440.0	0.2	-0.2	0.3	2.00	2.00	0.00
1,480.0	1.60	310.00	1,480.0	0.7	-0.9	1.0	2.00	2.00	0.00
1,520.0	2.40	310.00	1,520.0	1.6	-1.9	2.3	2.00	2.00	0.00
1,560.0	3.20	310.00	1,559.9	2.9	-3.4	4.0	2.00	2.00	0.00
1,600.0	4.00	310.00	1,599.8	4.5	-5.3	6.3	2.00	2.00	0.00
1,640.0	4.80	310.00	1,639.7	6.5	-7.7	9.0	2.00	2.00	0.00
1,650.0	5.00	310.00	1,649.7	7.0	-8.4	9.8	2.00	2.00	0.00
1,680.0	5.47	314.15	1,679.6	8.8	-10.4	12.3	2.00	1.55	13.85
1,720.0	6.12	318.68	1,719.4	11.8	-13.2	16.1	2.00	1.64	11.32
1,760.0	6.81	322.32	1,759.1	15.3	-16.0	20.4	2.00	1.72	9.09
1,800.0	7.52	325.28	1,798.8	19.3	-19.0	25.3	2.00	1.77	7.40
1,840.0	8.25	327.73	1,838.4	23.9	-22.0	30.7	2.00	1.82	6.12
1,880.0	8.99	329.78	1,878.0	29.0	-25.1	36.6	2.00	1.85	5.13
1,920.0	9.73	331.52	1,917.4	34.7	-28.3	43.1	2.00	1.87	4.35
1,960.0	10.49	333.01	1,956.8	40.9	-31.5	50.1	2.00	1.89	3.73
2,000.0	11.25	334.30	1,996.1	47.6	-34.9	57.6	2.00	1.90	3.23
2,040.0	12.02	335.44	2,035.3	54.9	-38.3	65.7	2.00	1.92	2.83
2,080.0	12.79	336.43	2,074.3	62.8	-41.8	74.3	2.00	1.93	2.49

Database:	EDM den0-adp01 Server Data	Local Co-ordinate Reference:	Well BEDDO P25-18D
Company:	NOBLE ENERGY INC WELD COUNTY CO	TVD Reference:	WELL @ 4817.0ft (Original Well Elev)
Project:	SEC.25-T3N-R67W	MD Reference:	WELL @ 4817.0ft (Original Well Elev)
Site:	BEDDO P25-22D Pad Sec.25-T3N-R67W	North Reference:	True
Well:	BEDDO P25-18D	Survey Calculation Method:	Minimum Curvature
Wellbore:	BEDDO P25-18D		
Design:	Noble BEDDO P25-18D Plan #2 (9-30-09)		

Planned Survey									
Measured Depth (ft)	Inclination (°)	Azimuth (°)	Vertical Depth (ft)	+N/-S (ft)	+E/-W (ft)	Vertical Section (ft)	Dogleg Rate (°/100ft)	Build Rate (°/100ft)	Turn Rate (°/100ft)
2,120.0	13.56	337.32	2,113.3	71.2	-45.4	83.4	2.00	1.94	2.21
2,132.1	13.80	337.57	2,125.0	73.8	-46.5	86.2	2.00	1.94	2.05
2,160.0	13.80	337.57	2,152.1	80.0	-49.0	92.9	0.00	0.00	0.00
2,200.0	13.80	337.57	2,191.0	88.8	-52.7	102.4	0.00	0.00	0.00
2,240.0	13.80	337.57	2,229.8	97.6	-56.3	112.0	0.00	0.00	0.00
2,280.0	13.80	337.57	2,268.7	106.4	-59.9	121.5	0.00	0.00	0.00
2,320.0	13.80	337.57	2,307.5	115.2	-63.6	131.1	0.00	0.00	0.00
2,360.0	13.80	337.57	2,346.4	124.0	-67.2	140.6	0.00	0.00	0.00
2,400.0	13.80	337.57	2,385.2	132.9	-70.9	150.1	0.00	0.00	0.00
2,440.0	13.80	337.57	2,424.0	141.7	-74.5	159.7	0.00	0.00	0.00
2,480.0	13.80	337.57	2,462.9	150.5	-78.1	169.2	0.00	0.00	0.00
2,520.0	13.80	337.57	2,501.7	159.3	-81.8	178.7	0.00	0.00	0.00
2,560.0	13.80	337.57	2,540.6	168.1	-85.4	188.3	0.00	0.00	0.00
2,600.0	13.80	337.57	2,579.4	177.0	-89.1	197.8	0.00	0.00	0.00
2,640.0	13.80	337.57	2,618.3	185.8	-92.7	207.4	0.00	0.00	0.00
2,680.0	13.80	337.57	2,657.1	194.6	-96.3	216.9	0.00	0.00	0.00
2,720.0	13.80	337.57	2,696.0	203.4	-100.0	226.4	0.00	0.00	0.00
2,760.0	13.80	337.57	2,734.8	212.2	-103.6	236.0	0.00	0.00	0.00
2,800.0	13.80	337.57	2,773.7	221.0	-107.3	245.5	0.00	0.00	0.00
2,840.0	13.80	337.57	2,812.5	229.9	-110.9	255.0	0.00	0.00	0.00
2,880.0	13.80	337.57	2,851.4	238.7	-114.5	264.6	0.00	0.00	0.00
2,920.0	13.80	337.57	2,890.2	247.5	-118.2	274.1	0.00	0.00	0.00
2,960.0	13.80	337.57	2,929.0	256.3	-121.8	283.7	0.00	0.00	0.00
3,000.0	13.80	337.57	2,967.9	265.1	-125.5	293.2	0.00	0.00	0.00
3,040.0	13.80	337.57	3,006.7	273.9	-129.1	302.7	0.00	0.00	0.00
3,080.0	13.80	337.57	3,045.6	282.8	-132.7	312.3	0.00	0.00	0.00
3,120.0	13.80	337.57	3,084.4	291.6	-136.4	321.8	0.00	0.00	0.00
3,160.0	13.80	337.57	3,123.3	300.4	-140.0	331.3	0.00	0.00	0.00
3,200.0	13.80	337.57	3,162.1	309.2	-143.7	340.9	0.00	0.00	0.00
3,240.0	13.80	337.57	3,201.0	318.0	-147.3	350.4	0.00	0.00	0.00
3,280.0	13.80	337.57	3,239.8	326.9	-150.9	360.0	0.00	0.00	0.00
3,320.0	13.80	337.57	3,278.7	335.7	-154.6	369.5	0.00	0.00	0.00
3,360.0	13.80	337.57	3,317.5	344.5	-158.2	379.0	0.00	0.00	0.00
3,400.0	13.80	337.57	3,356.3	353.3	-161.9	388.6	0.00	0.00	0.00
3,440.0	13.80	337.57	3,395.2	362.1	-165.5	398.1	0.00	0.00	0.00
3,480.0	13.80	337.57	3,434.0	370.9	-169.2	407.6	0.00	0.00	0.00
3,520.0	13.80	337.57	3,472.9	379.8	-172.8	417.2	0.00	0.00	0.00
3,560.0	13.80	337.57	3,511.7	388.6	-176.4	426.7	0.00	0.00	0.00
3,600.0	13.80	337.57	3,550.6	397.4	-180.1	436.3	0.00	0.00	0.00
3,640.0	13.80	337.57	3,589.4	406.2	-183.7	445.8	0.00	0.00	0.00
3,680.0	13.80	337.57	3,628.3	415.0	-187.4	455.3	0.00	0.00	0.00
3,720.0	13.80	337.57	3,667.1	423.8	-191.0	464.9	0.00	0.00	0.00
3,760.0	13.80	337.57	3,706.0	432.7	-194.6	474.4	0.00	0.00	0.00
3,800.0	13.80	337.57	3,744.8	441.5	-198.3	483.9	0.00	0.00	0.00
3,840.0	13.80	337.57	3,783.6	450.3	-201.9	493.5	0.00	0.00	0.00
3,880.0	13.80	337.57	3,822.5	459.1	-205.6	503.0	0.00	0.00	0.00
3,920.0	13.80	337.57	3,861.3	467.9	-209.2	512.6	0.00	0.00	0.00
3,960.0	13.80	337.57	3,900.2	476.8	-212.8	522.1	0.00	0.00	0.00
4,000.0	13.80	337.57	3,939.0	485.6	-216.5	531.6	0.00	0.00	0.00
4,040.0	13.80	337.57	3,977.9	494.4	-220.1	541.2	0.00	0.00	0.00
4,080.0	13.80	337.57	4,016.7	503.2	-223.8	550.7	0.00	0.00	0.00
4,120.0	13.80	337.57	4,055.6	512.0	-227.4	560.2	0.00	0.00	0.00
4,160.0	13.80	337.57	4,094.4	520.8	-231.0	569.8	0.00	0.00	0.00
4,200.0	13.80	337.57	4,133.3	529.7	-234.7	579.3	0.00	0.00	0.00

Database:	EDM den0-adp01 Server Data	Local Co-ordinate Reference:	Well BEDDO P25-18D
Company:	NOBLE ENERGY INC WELD COUNTY CO	TVD Reference:	WELL @ 4817.0ft (Original Well Elev)
Project:	SEC.25-T3N-R67W	MD Reference:	WELL @ 4817.0ft (Original Well Elev)
Site:	BEDDO P25-22D Pad Sec.25-T3N-R67W	North Reference:	True
Well:	BEDDO P25-18D	Survey Calculation Method:	Minimum Curvature
Wellbore:	BEDDO P25-18D		
Design:	Noble BEDDO P25-18D Plan #2 (9-30-09)		

Planned Survey

Measured Depth (ft)	Inclination (°)	Azimuth (°)	Vertical Depth (ft)	+N/-S (ft)	+E/-W (ft)	Vertical Section (ft)	Dogleg Rate (°/100ft)	Build Rate (°/100ft)	Turn Rate (°/100ft)
4,240.0	13.80	337.57	4,172.1	538.5	-238.3	588.9	0.00	0.00	0.00
4,280.0	13.80	337.57	4,211.0	547.3	-242.0	598.4	0.00	0.00	0.00
4,320.0	13.80	337.57	4,249.8	556.1	-245.6	607.9	0.00	0.00	0.00
4,360.0	13.80	337.57	4,288.6	564.9	-249.2	617.5	0.00	0.00	0.00
4,389.0	13.80	337.57	4,316.8	571.3	-251.9	624.4	0.00	0.00	0.00
4,400.0	13.58	337.57	4,327.5	573.7	-252.9	627.0	2.00	-2.00	0.00
4,440.0	12.78	337.57	4,366.4	582.2	-256.4	636.1	2.00	-2.00	0.00
4,480.0	11.98	337.57	4,405.5	590.1	-259.6	644.7	2.00	-2.00	0.00
4,520.0	11.18	337.57	4,444.7	597.5	-262.7	652.7	2.00	-2.00	0.00
4,560.0	10.38	337.57	4,484.0	604.4	-265.5	660.2	2.00	-2.00	0.00
4,600.0	9.58	337.57	4,523.4	610.8	-268.2	667.1	2.00	-2.00	0.00
4,640.0	8.78	337.57	4,562.9	616.7	-270.6	673.5	2.00	-2.00	0.00
4,680.0	7.98	337.57	4,602.4	622.1	-272.9	679.3	2.00	-2.00	0.00
4,720.0	7.18	337.57	4,642.1	627.0	-274.9	684.6	2.00	-2.00	0.00
4,760.0	6.38	337.57	4,681.8	631.3	-276.7	689.3	2.00	-2.00	0.00
4,800.0	5.58	337.57	4,721.6	635.2	-278.3	693.5	2.00	-2.00	0.00
4,840.0	4.78	337.57	4,761.4	638.5	-279.6	697.1	2.00	-2.00	0.00
4,880.0	3.98	337.57	4,801.3	641.3	-280.8	700.1	2.00	-2.00	0.00
4,920.0	3.18	337.57	4,841.2	643.7	-281.7	702.6	2.00	-2.00	0.00
4,960.0	2.38	337.57	4,881.2	645.4	-282.5	704.6	2.00	-2.00	0.00
5,000.0	1.58	337.57	4,921.2	646.7	-283.0	705.9	2.00	-2.00	0.00
5,040.0	0.78	337.57	4,961.2	647.5	-283.3	706.8	2.00	-2.00	0.00
5,078.8	0.00	0.00	5,000.0	647.7	-283.4	707.0	2.00	-2.00	0.00
TARGET BHL 1340'FNL, 2490'FEL									
5,080.0	0.00	0.00	5,001.2	647.7	-283.4	707.0	0.00	0.00	0.00
5,120.0	0.00	0.00	5,041.2	647.7	-283.4	707.0	0.00	0.00	0.00
5,160.0	0.00	0.00	5,081.2	647.7	-283.4	707.0	0.00	0.00	0.00
5,200.0	0.00	0.00	5,121.2	647.7	-283.4	707.0	0.00	0.00	0.00
5,240.0	0.00	0.00	5,161.2	647.7	-283.4	707.0	0.00	0.00	0.00
5,280.0	0.00	0.00	5,201.2	647.7	-283.4	707.0	0.00	0.00	0.00
5,320.0	0.00	0.00	5,241.2	647.7	-283.4	707.0	0.00	0.00	0.00
5,360.0	0.00	0.00	5,281.2	647.7	-283.4	707.0	0.00	0.00	0.00
5,400.0	0.00	0.00	5,321.2	647.7	-283.4	707.0	0.00	0.00	0.00
5,440.0	0.00	0.00	5,361.2	647.7	-283.4	707.0	0.00	0.00	0.00
5,480.0	0.00	0.00	5,401.2	647.7	-283.4	707.0	0.00	0.00	0.00
5,520.0	0.00	0.00	5,441.2	647.7	-283.4	707.0	0.00	0.00	0.00
5,560.0	0.00	0.00	5,481.2	647.7	-283.4	707.0	0.00	0.00	0.00
5,600.0	0.00	0.00	5,521.2	647.7	-283.4	707.0	0.00	0.00	0.00
5,640.0	0.00	0.00	5,561.2	647.7	-283.4	707.0	0.00	0.00	0.00
5,680.0	0.00	0.00	5,601.2	647.7	-283.4	707.0	0.00	0.00	0.00
5,720.0	0.00	0.00	5,641.2	647.7	-283.4	707.0	0.00	0.00	0.00
5,760.0	0.00	0.00	5,681.2	647.7	-283.4	707.0	0.00	0.00	0.00
5,800.0	0.00	0.00	5,721.2	647.7	-283.4	707.0	0.00	0.00	0.00
5,840.0	0.00	0.00	5,761.2	647.7	-283.4	707.0	0.00	0.00	0.00
5,880.0	0.00	0.00	5,801.2	647.7	-283.4	707.0	0.00	0.00	0.00
5,920.0	0.00	0.00	5,841.2	647.7	-283.4	707.0	0.00	0.00	0.00
5,960.0	0.00	0.00	5,881.2	647.7	-283.4	707.0	0.00	0.00	0.00
6,000.0	0.00	0.00	5,921.2	647.7	-283.4	707.0	0.00	0.00	0.00
6,040.0	0.00	0.00	5,961.2	647.7	-283.4	707.0	0.00	0.00	0.00
6,080.0	0.00	0.00	6,001.2	647.7	-283.4	707.0	0.00	0.00	0.00
6,120.0	0.00	0.00	6,041.2	647.7	-283.4	707.0	0.00	0.00	0.00
6,160.0	0.00	0.00	6,081.2	647.7	-283.4	707.0	0.00	0.00	0.00
6,200.0	0.00	0.00	6,121.2	647.7	-283.4	707.0	0.00	0.00	0.00

Database:	EDM den0-adp01 Server Data	Local Co-ordinate Reference:	Well BEDDO P25-18D
Company:	NOBLE ENERGY INC WELD COUNTY CO	TVD Reference:	WELL @ 4817.0ft (Original Well Elev)
Project:	SEC.25-T3N-R67W	MD Reference:	WELL @ 4817.0ft (Original Well Elev)
Site:	BEDDO P25-22D Pad Sec.25-T3N-R67W	North Reference:	True
Well:	BEDDO P25-18D	Survey Calculation Method:	Minimum Curvature
Wellbore:	BEDDO P25-18D		
Design:	Noble BEDDO P25-18D Plan #2 (9-30-09)		

Planned Survey

Measured Depth (ft)	Inclination (°)	Azimuth (°)	Vertical Depth (ft)	+N/-S (ft)	+E/-W (ft)	Vertical Section (ft)	Dogleg Rate (°/100ft)	Build Rate (°/100ft)	Turn Rate (°/100ft)
6,240.0	0.00	0.00	6,161.2	647.7	-283.4	707.0	0.00	0.00	0.00
6,280.0	0.00	0.00	6,201.2	647.7	-283.4	707.0	0.00	0.00	0.00
6,320.0	0.00	0.00	6,241.2	647.7	-283.4	707.0	0.00	0.00	0.00
6,360.0	0.00	0.00	6,281.2	647.7	-283.4	707.0	0.00	0.00	0.00
6,400.0	0.00	0.00	6,321.2	647.7	-283.4	707.0	0.00	0.00	0.00
6,440.0	0.00	0.00	6,361.2	647.7	-283.4	707.0	0.00	0.00	0.00
6,480.0	0.00	0.00	6,401.2	647.7	-283.4	707.0	0.00	0.00	0.00
6,520.0	0.00	0.00	6,441.2	647.7	-283.4	707.0	0.00	0.00	0.00
6,560.0	0.00	0.00	6,481.2	647.7	-283.4	707.0	0.00	0.00	0.00
6,600.0	0.00	0.00	6,521.2	647.7	-283.4	707.0	0.00	0.00	0.00
6,640.0	0.00	0.00	6,561.2	647.7	-283.4	707.0	0.00	0.00	0.00
6,680.0	0.00	0.00	6,601.2	647.7	-283.4	707.0	0.00	0.00	0.00
6,720.0	0.00	0.00	6,641.2	647.7	-283.4	707.0	0.00	0.00	0.00
6,760.0	0.00	0.00	6,681.2	647.7	-283.4	707.0	0.00	0.00	0.00
6,800.0	0.00	0.00	6,721.2	647.7	-283.4	707.0	0.00	0.00	0.00
6,840.0	0.00	0.00	6,761.2	647.7	-283.4	707.0	0.00	0.00	0.00
6,880.0	0.00	0.00	6,801.2	647.7	-283.4	707.0	0.00	0.00	0.00
6,920.0	0.00	0.00	6,841.2	647.7	-283.4	707.0	0.00	0.00	0.00
6,960.0	0.00	0.00	6,881.2	647.7	-283.4	707.0	0.00	0.00	0.00
7,000.0	0.00	0.00	6,921.2	647.7	-283.4	707.0	0.00	0.00	0.00
7,040.0	0.00	0.00	6,961.2	647.7	-283.4	707.0	0.00	0.00	0.00
7,080.0	0.00	0.00	7,001.2	647.7	-283.4	707.0	0.00	0.00	0.00
7,090.8	0.00	0.00	7,012.0	647.7	-283.4	707.0	0.00	0.00	0.00
NIOBRARA									
7,120.0	0.00	0.00	7,041.2	647.7	-283.4	707.0	0.00	0.00	0.00
7,160.0	0.00	0.00	7,081.2	647.7	-283.4	707.0	0.00	0.00	0.00
7,200.0	0.00	0.00	7,121.2	647.7	-283.4	707.0	0.00	0.00	0.00
7,240.0	0.00	0.00	7,161.2	647.7	-283.4	707.0	0.00	0.00	0.00
7,280.0	0.00	0.00	7,201.2	647.7	-283.4	707.0	0.00	0.00	0.00
7,320.0	0.00	0.00	7,241.2	647.7	-283.4	707.0	0.00	0.00	0.00
7,360.0	0.00	0.00	7,281.2	647.7	-283.4	707.0	0.00	0.00	0.00
7,375.8	0.00	0.00	7,297.0	647.7	-283.4	707.0	0.00	0.00	0.00
CODELL									
7,400.0	0.00	0.00	7,321.2	647.7	-283.4	707.0	0.00	0.00	0.00
7,440.0	0.00	0.00	7,361.2	647.7	-283.4	707.0	0.00	0.00	0.00
7,480.0	0.00	0.00	7,401.2	647.7	-283.4	707.0	0.00	0.00	0.00
7,520.0	0.00	0.00	7,441.2	647.7	-283.4	707.0	0.00	0.00	0.00
7,560.0	0.00	0.00	7,481.2	647.7	-283.4	707.0	0.00	0.00	0.00
7,600.0	0.00	0.00	7,521.2	647.7	-283.4	707.0	0.00	0.00	0.00
7,640.0	0.00	0.00	7,561.2	647.7	-283.4	707.0	0.00	0.00	0.00
7,680.0	0.00	0.00	7,601.2	647.7	-283.4	707.0	0.00	0.00	0.00
7,720.0	0.00	0.00	7,641.2	647.7	-283.4	707.0	0.00	0.00	0.00
7,760.0	0.00	0.00	7,681.2	647.7	-283.4	707.0	0.00	0.00	0.00
7,800.0	0.00	0.00	7,721.2	647.7	-283.4	707.0	0.00	0.00	0.00
7,820.8	0.00	0.00	7,742.0	647.7	-283.4	707.0	0.00	0.00	0.00
J-SAND									
7,840.0	0.00	0.00	7,761.2	647.7	-283.4	707.0	0.00	0.00	0.00
7,880.0	0.00	0.00	7,801.2	647.7	-283.4	707.0	0.00	0.00	0.00
7,920.0	0.00	0.00	7,841.2	647.7	-283.4	707.0	0.00	0.00	0.00
7,960.0	0.00	0.00	7,881.2	647.7	-283.4	707.0	0.00	0.00	0.00
8,000.0	0.00	0.00	7,921.2	647.7	-283.4	707.0	0.00	0.00	0.00
8,020.8	0.00	0.00	7,942.0	647.7	-283.4	707.0	0.00	0.00	0.00
HARDLINE 121'W OF BEDDO P25-18D BHL									

Database:	EDM den0-adp01 Server Data	Local Co-ordinate Reference:	Well BEDDO P25-18D
Company:	NOBLE ENERGY INC WELD COUNTY CO	TVD Reference:	WELL @ 4817.0ft (Original Well Elev)
Project:	SEC.25-T3N-R67W	MD Reference:	WELL @ 4817.0ft (Original Well Elev)
Site:	BEDDO P25-22D Pad Sec.25-T3N-R67W	North Reference:	True
Well:	BEDDO P25-18D	Survey Calculation Method:	Minimum Curvature
Wellbore:	BEDDO P25-18D		
Design:	Noble BEDDO P25-18D Plan #2 (9-30-09)		

Targets

Target Name

- hit/miss target	Dip Angle (°)	Dip Dir. (°)	TVD (ft)	+N/-S (ft)	+E/-W (ft)	Northing (ft)	Easting (ft)	Latitude	Longitude
- Shape									
HARDLINE 121'W OF	0.00	0.00	7,942.0	547.7	-404.4	1,316,081.36	3,184,522.37	40° 11' 56.952 N	104° 50' 21.904 W
- plan misses target center by 157.0ft at 8020.8ft MD (7942.0 TVD, 647.7 N, -283.4 E)									
- Polygon									
Point 1			7,942.0	0.0	0.0	1,316,081.36	3,184,522.37		
Point 2			7,942.0	200.0	0.0	1,316,281.35	3,184,520.88		
TARGET BHL 1340'F	0.00	0.00	5,000.0	647.7	-283.4	1,316,182.28	3,184,642.58	40° 11' 57.941 N	104° 50' 20.345 W
- plan hits target center									
- Point									

Formations

Measured Depth (ft)	Vertical Depth (ft)	Name	Lithology	Dip (°)	Dip Direction (°)
7,090.8	7,012.0	NIOBRARA		0.00	
7,375.8	7,297.0	CODELL		0.00	
7,820.8	7,742.0	J-SAND		0.00	