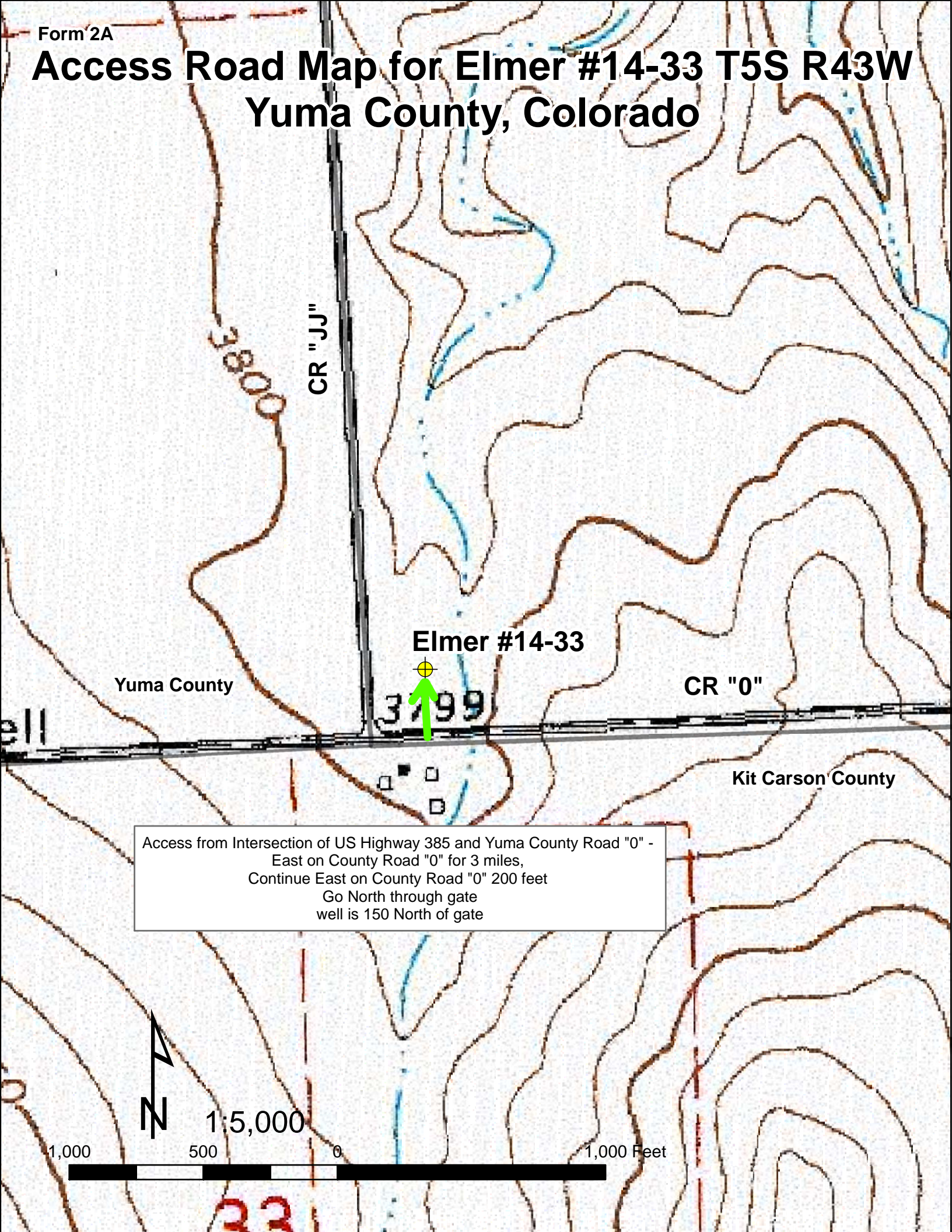


Access Road Map for Elmer #14-33 T5S R43W Yuma County, Colorado



Yuma County

Elmer #14-33

CR "0"

Kit Carson County

Access from Intersection of US Highway 385 and Yuma County Road "0" -
East on County Road "0" for 3 miles,
Continue East on County Road "0" 200 feet
Go North through gate
well is 150 North of gate



1:5,000

1,000

500

0

1,000 Feet