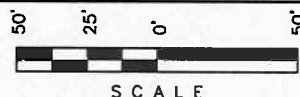




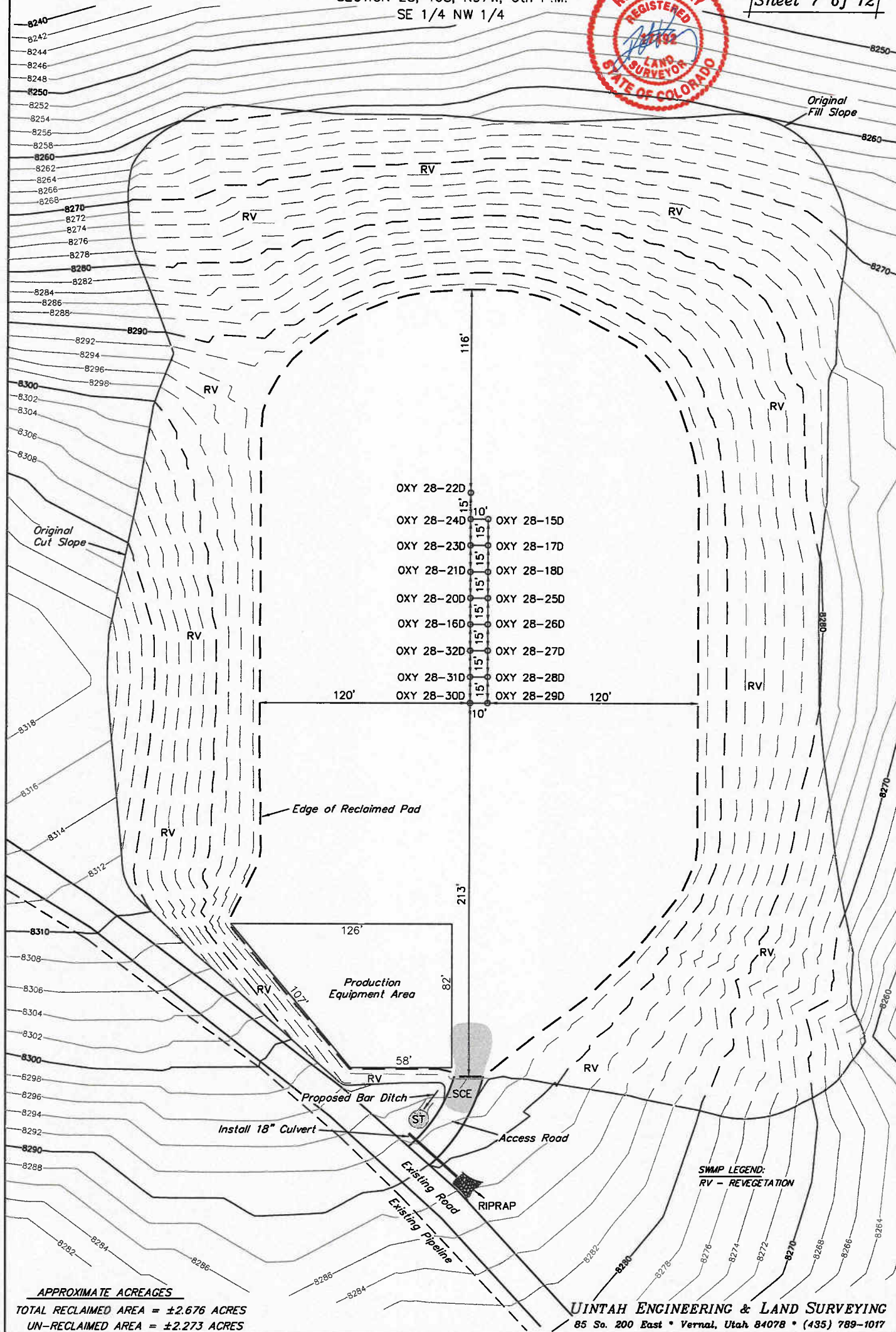
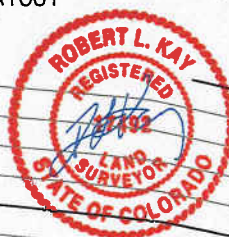
SCALE: 1" = 50'
DATE: 08-20-09
Drawn By: D.R.B.
Revised: 09-24-09 D.R.B.
Revised: 10-01-09 D.R.B.

BERRY PETROLEUM COMPANY
RECLAMATION PAD & PROD. EQUIPMENT LAYOUT

WELL PAD F28 697
SECTION 28, T6S, R97W, 6th P.M.
SE 1/4 NW 1/4



Sheet 7 of 12



APPROXIMATE ACREAGES

TOTAL RECLAIMED AREA = ±2.676 ACRES
UN-RECLAIMED AREA = ±2.273 ACRES

UINTAH ENGINEERING & LAND SURVEYING
85 So. 200 East • Vernal, Utah 84078 • (435) 789-1017