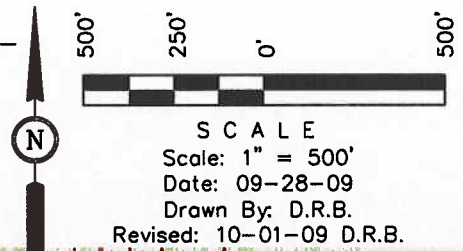


BERRY PETROLEUM COMPANY  
SUPPLEMENTAL PLAT

WELL PAD F28 697  
SECTION 28, T6S, R97W, 6th P.M.  
SE 1/4 NW 1/4



NW Cor Sec 29  
W.C. 1917 Brass  
Cap, 1.0' High  
Lat: 39.503069  
Long: 108.234139

Comp. from  
Witness corner

N89°47'47"W - 2640.99' (Meas.)

1917 Brass Cap  
1.5' High  
Lat: 39.501242  
Long: 108.224778

660.00' (G.L.O.)  
N00°00'07"E - 2646.22' (Meas.)

F28 697

Reference Area  
Lat: 39.494722°  
Long: 108.225986°

1917 Brass Cap, 1.7'  
High, (2) 4x4 Posts  
Lat: 39.4933994  
Long: 108.234119