

BERRY PETROLEUM COMPANY

WELL PAD F28 697

OXY 28-22D, 28-24D, 28-23D, 28-21D, 28-20D, 28-19D, 28-32D, 28-31D, 28-30D,
28-15D, 28-17D, 28-18D, 28-25D, 28-26D, 28-27D, 28-28D & 28-29D

LOCATED IN GARFIELD COUNTY, COLORADO

SECTION 28, T6S, R97W, 6th P.M.

SE 1/4 NW 1/4

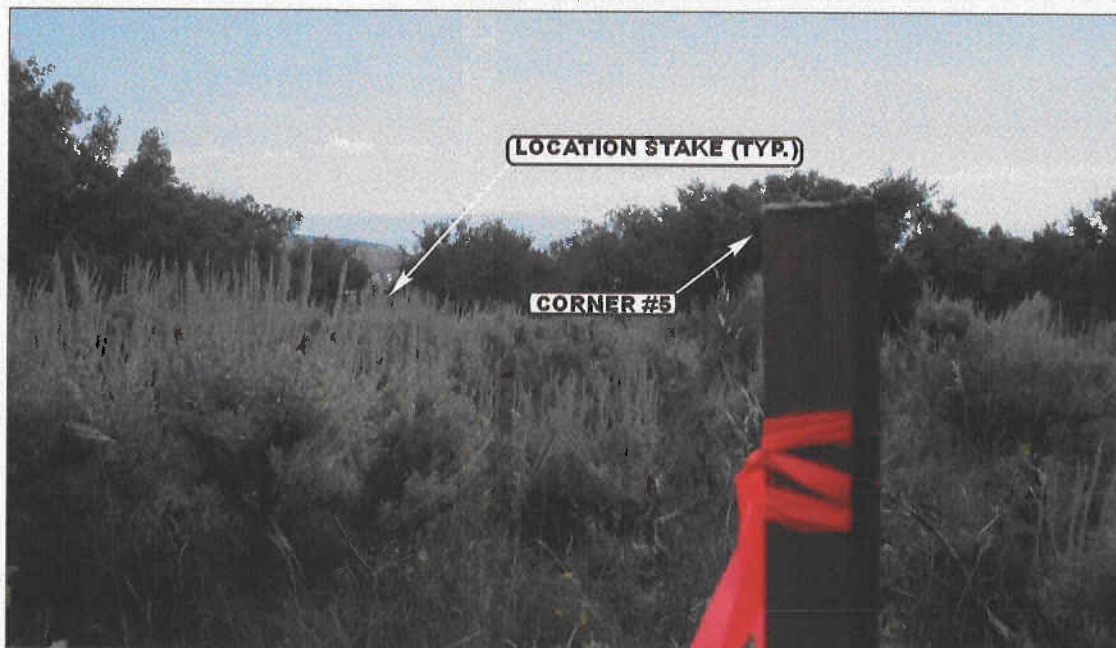


PHOTO: VIEW FROM CORNER #5 TO LOCATION STAKES

CAMERA ANGLE: SOUTHWESTERLY



PHOTO: VIEW FROM BEGINNING OF PROPOSED ACCESS

CAMERA ANGLE: SOUTHEASTERLY



- Since 1964 -

UELS

Uintah Engineering & Land Surveying

85 South 200 East Vernal, Utah 84078

(435) 789-1017 * FAX (435) 789-1813

LOCATION PHOTOS

8 24 09
MONTH DAY YEAR

TAKEN BY: B.J.

DRAWN BY: J.L.G.

REVISED: 2-4-10

PHOTO

P1

BERRY PETROLEUM COMPANY

WELL PAD F28 697

OXY 28-22D, 28-24D, 28-23D, 28-21D, 28-20D, 28-19D, 28-32D, 28-31D, 28-30D,
28-15D, 28-17D, 28-18D, 28-25D, 28-26D, 28-27D, 28-28D & 28-29D

LOCATED IN GARFIELD COUNTY, COLORADO

SECTION 28, T6S, R97W, 6th P.M.

SE 1/4 NW 1/4



PHOTO: VIEW OF LOCATION STAKES

CAMERA ANGLE: NORTHERLY

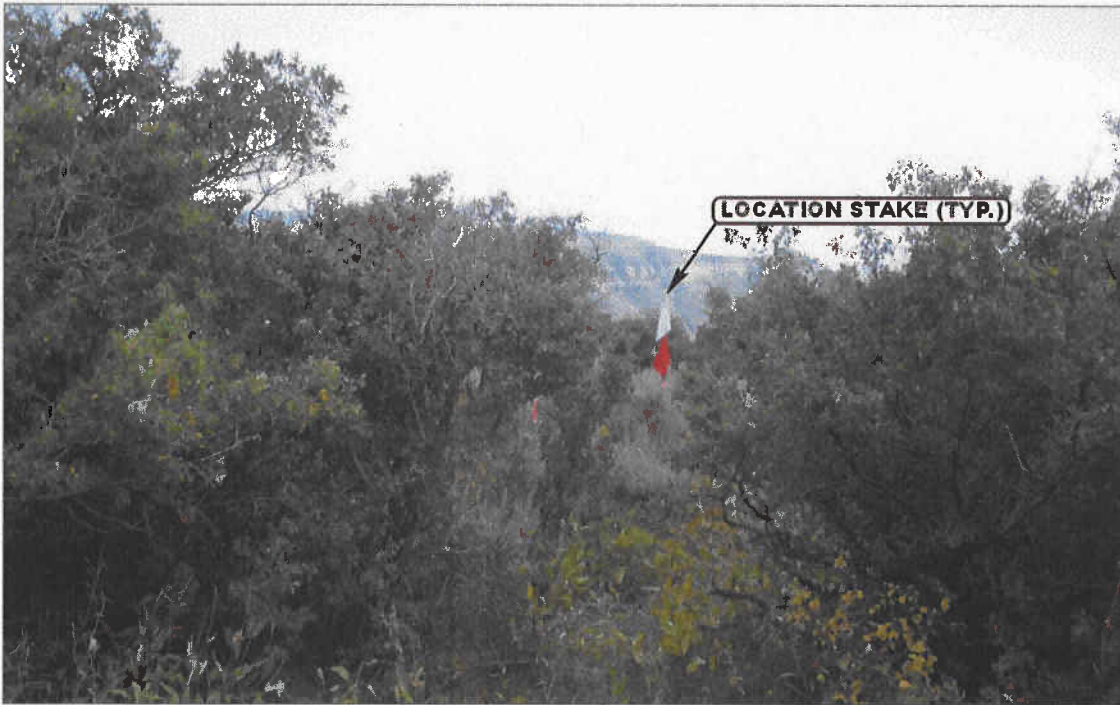


PHOTO: VIEW OF LOCATION STAKES

CAMERA ANGLE: SOUTHERLY



- Since 1964 -

UELS

Uintah Engineering & Land Surveying

85 South 200 East Vernal, Utah 84078

(435) 789-1017 * FAX (435) 789-1813

LOCATION PHOTOS

8

MONTH

24

DAY

09

YEAR

PHOTO

P2

TAKEN BY: B.J.

DRAWN BY: J.L.G.

REVISED: 2-4-10

BERRY PETROLEUM COMPANY

WELL PAD F28 697

OXY 28-22D, 28-24D, 28-23D, 28-21D, 28-20D, 28-19D, 28-32D, 28-31D, 28-30D,
28-15D, 28-17D, 28-18D, 28-25D, 28-26D, 28-27D, 28-28D & 28-29D

LOCATED IN GARFIELD COUNTY, COLORADO

SECTION 28, T6S, R97W, 6th P.M.

SE 1/4 NW 1/4



PHOTO: VIEW OF LOCATION STAKES

CAMERA ANGLE: EASTERLY



PHOTO: VIEW OF LOCATION STAKES

CAMERA ANGLE: WESTERLY



- Since 1964 -

UELS

Uintah Engineering & Land Surveying

85 South 200 East Vernal, Utah 84078

(435) 789-1017 * FAX (435) 789-1813

LOCATION PHOTOS

8

MONTH

24

DAY

09

YEAR

PHOTO

P3

TAKEN BY: B.J.

DRAWN BY: J.L.G.

REVISED: 2-4-10