

Steil Surveying Services, LLC

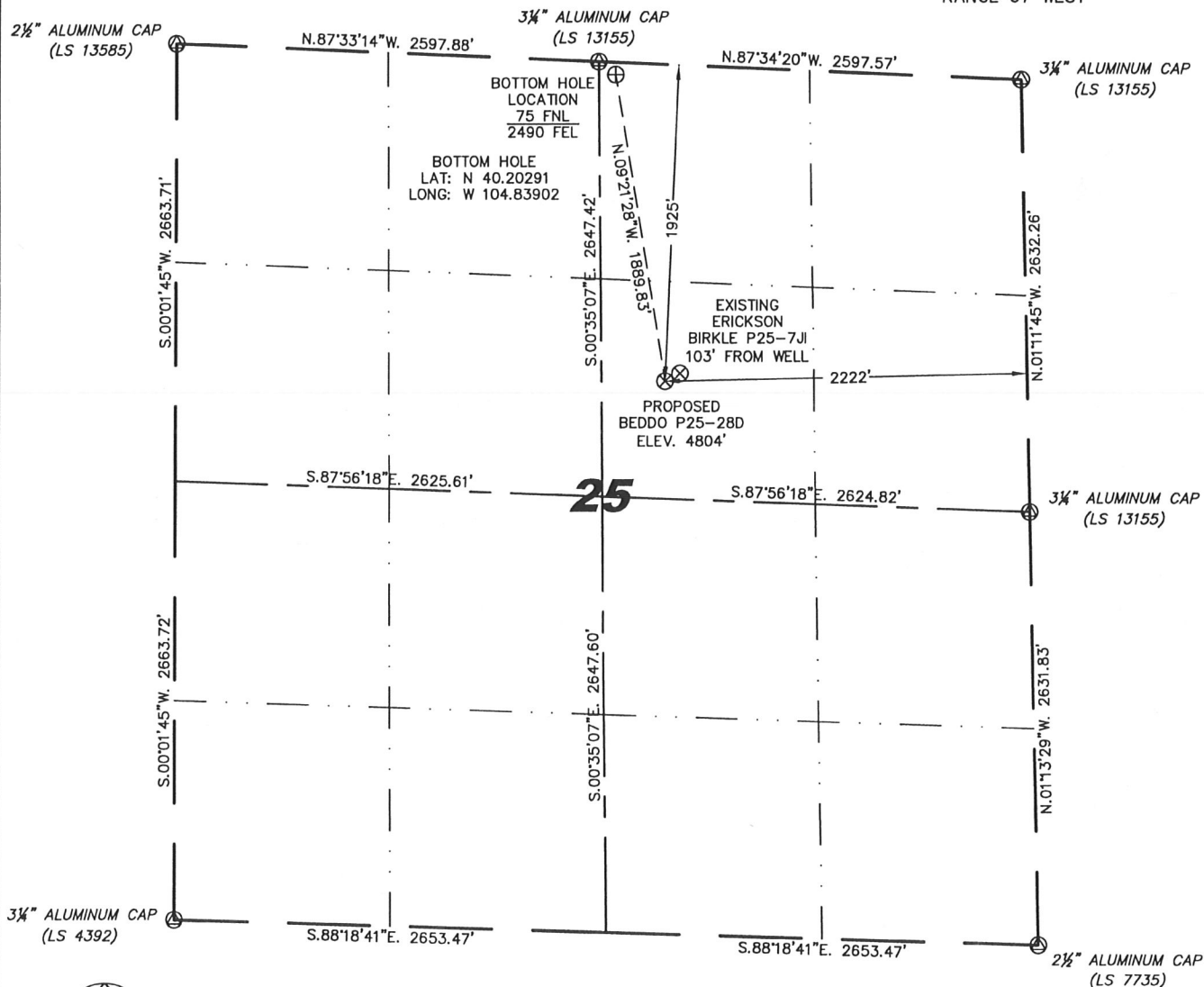
1102 West 19th Street P.O. BOX 2073

Cheyenne, Wyoming 82009

WELL LOCATION CERTIFICATE

THIS MAP DOES NOT REPRESENT A BOUNDARY SURVEY

SECTION 25
TOWNSHIP 3 NORTH
RANGE 67 WEST



IN ACCORDANCE WITH A REQUEST FROM MATT CAMPBELL - NOBLE ENERGY INC, STEIL SURVEYING SERVICES, LLC HAS DETERMINED THE LOCATION OF THE BEDDO P25-28D WELL TO BE 1925' FNL, 2222' FEL, AS MEASURED AT NINETY (90) DEGREES FROM THE SECTION LINES, SECTION 25, TOWNSHIP 3 NORTH, RANGE 67 WEST, 6TH PRINCIPLE MERIDIAN, WELD COUNTY, COLORADO.

I HEREBY CERTIFY THAT THIS WELL LOCATION CERTIFICATE WAS PREPARED BY ME, OR UNDER MY DIRECT SUPERVISION, THAT THE FIELD WORK WAS COMPLETED ON 07/07/2009, FOR AND ON BEHALF OF NOBLE ENERGY INC, THAT IT IS NOT A LAND SURVEY PLAT OR AN IMPROVEMENT SURVEY PLAT, AND THAT IT IS NOT TO BE RELIED UPON FOR ESTABLISHMENT OF FENCE, BUILDING, OR OTHER FUTURE IMPROVEMENT LINES.

NOTES:

- 1) BASIS OF BEARINGS FOR THIS MAP ARE BASED UPON GPS OBSERVATIONS MADE ON 11/05/2008 BETWEEN MONUMENTS LOCATED AT THE SOUTHEAST SECTION CORNER AND THE NORTHEAST SECTION CORNER OF SAID SECTION AND WITH ALL BEARINGS SHOWN HEREON RELATIVE THERETO.
- 2) ELEVATIONS ARE BASED UPON NGS OPUS SOLUTION NAVD 88 DATUM.
- 3) THE NEAREST EXISTING WELL IS: ERICKSON BIRKLE P25-7J, 103' NORTHEAST.
- 4) SEE VISIBLE IMPROVEMENTS EXHIBIT FOR ALL IMPROVEMENTS WITHIN 400'.
- 5) THE LOCATION FALLS IN PASTURE LAND.

LATITUDE & LONGITUDE (NAD 83 SURFACE HOLE):
LATITUDE: N 40.19779'
LONGITUDE: W 104.83797'
PDOP: 2.1
QUARTER-QUARTER: SW/4NE/4
NEAREST PROPERTY LINE: 480'+/- TO THE EAST

LEGEND

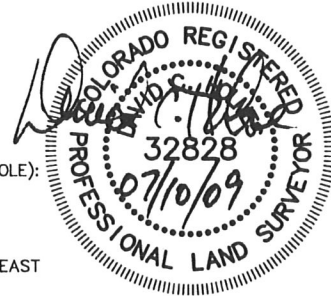
- ⊙ FOUND SURVEY MONUMENT PER MONUMENT RECORD - EXCEPTIONS NOTED.
- (C) CALCULATED DIMENSION

NOTICE: According to Colorado law you MUST commence any legal action based upon any defect in this W.L.C. within three years after you first discover such defect. In no event may any action based upon any defect in this W.L.C. be commenced more than ten years from this said date of the certification shown hereon.

David C. Holmes
Professional Land Surveyor Registration No. 32828
State of Colorado

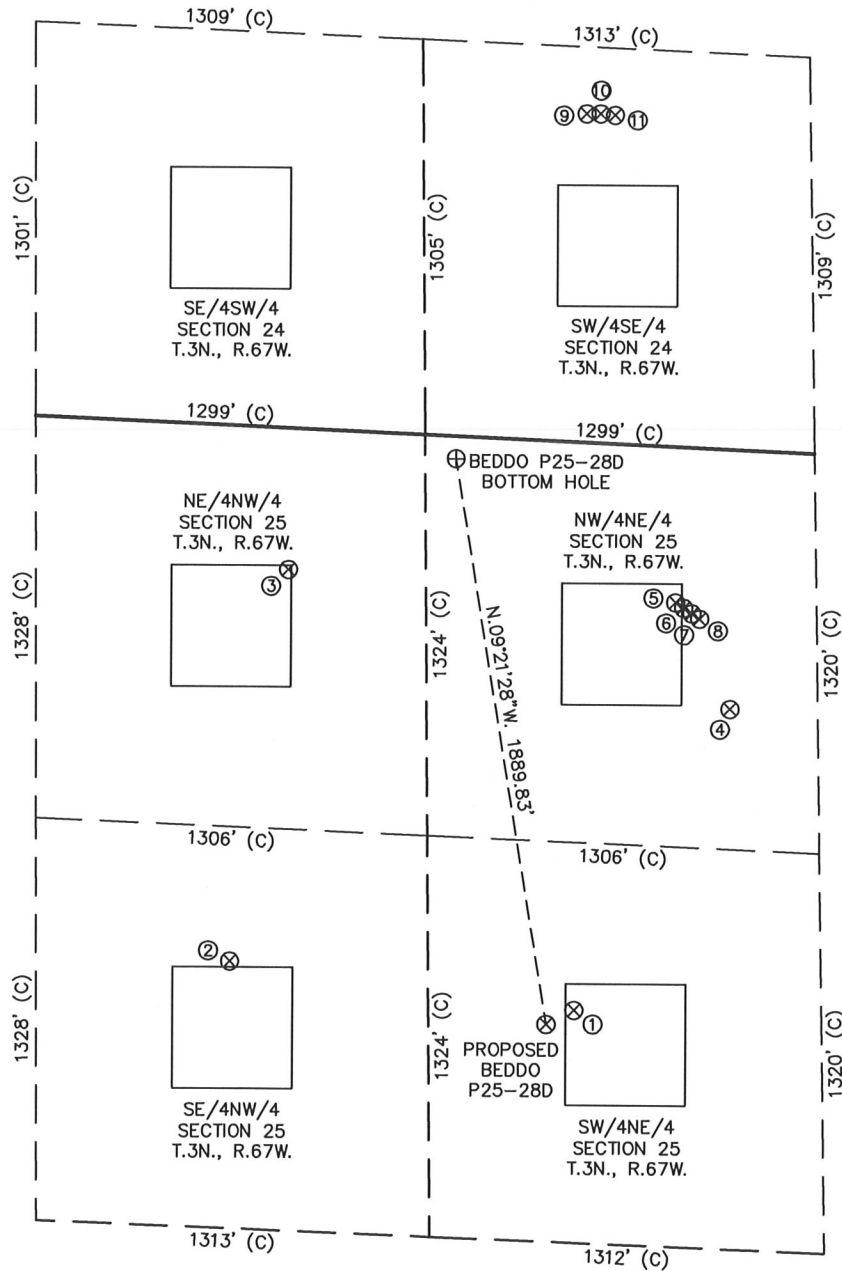
Completed 07/09/2009

JOB #: 09086

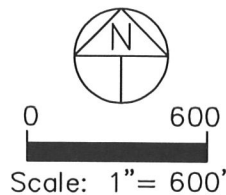


SITE SKETCH - BEDDO P25-28D

SECTION 25
TOWNSHIP 3 NORTH
RANGE 67 WEST



- | | |
|--|--|
| ①
ERICKSON
BIRKLE P25-7J
SW/NE SEC. 25
1874' FNL
2129' FEL
EL 4804'
N 40.19791
W 104.83764
PDOP 2.0 | ②
ERICKSON
BIRKLE P25-6J
SE/NW SEC. 25
1768' FNL
1953' FWL
EL 4803'
N 40.19836
W 104.84174
PDOP 2.2 |
| ③
ERICKSON
BIRKLE P25-3J
NE/NW SEC. 25
468' FNL
2143' FWL
EL 4800'
N 40.20191
W 104.84103
PDOP 2.2 | ④
ERICKSON
BIRKLE NO. 1
NW/NE SEC. 25
857' FNL
1593' FEL
EL 4804'
N 40.20064
W 104.83577
PDOP 2.6 |
| ⑤
HSR-BEDDO
3-25
NW/NE SEC. 25
515' FNL
1768' FEL
EL 4802'
N 40.20160
W 104.83641
PDOP 2.6 | ⑥
HSR-BEDDO
6-25
NW/NE SEC. 25
531' FNL
1741' FEL
EL 4802'
N 40.20156
W 104.83632
PDOP 2.6 |
| ⑦
HSR-BEDDO
7-25
NW/NE SEC. 25
548' FNL
1714' FEL
EL 4802'
N 40.20150
W 104.83622
PDOP 2.6 | ⑧
HSR-BEDDO
2-25
NW/NE SEC. 25
564' FNL
1688' FEL
EL 4802'
N 40.20146
W 104.83613
PDOP 2.6 |
| ⑨
MAGNESS
14-24A
SW/SE SEC. 24
1084' FSL
2074' FEL
EL 4797'
N 40.20604
W 104.83745
PDOP 2.0 | ⑩
BIRKLE
24-15J7
SW/SE SEC. 24
1086' FSL
2027' FEL
EL 4798'
N 40.20603
W 104.83729
PDOP 2.2 |
| ⑪
WADDLE
24-10J7
SW/SE SEC. 24
1083' FSL
1980' FEL
EL 4798'
N 40.20602
W 104.83712
PDOP 2.2 | |



NOTES:

- 1) THIS SKETCH DOES NOT REPRESENT A BOUNDARY SURVEY.
- 2) THE DATUM FOR THE LATITUDES AND LONGITUDES ON THIS SKETCH IS NAD83.