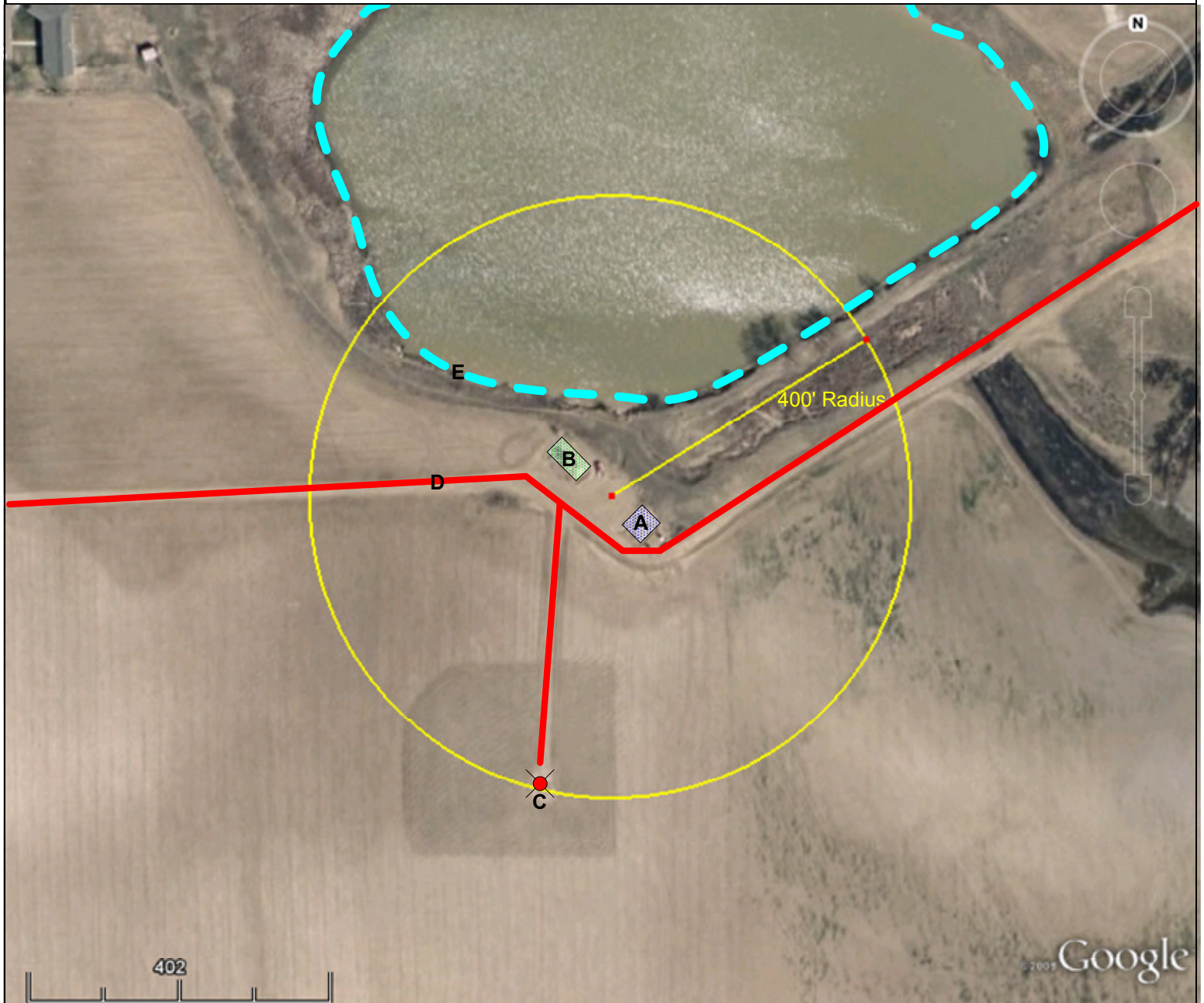


Location Drawing

Ballinger Production Facility



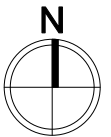
DESCRIPTION

Lat. 40.230397, Long. -104.937987

Elev. 4865'

1230' FNL, 1075' FWL

- A. Separator Enclosure
- B. Tank Battery Enclosure
- C. Existing Well HSR-Bassett 5-18
- D. Access Road
- E. Pond is 115' N.



Legend:



DATE

1/28/2010

Prepared by: Cody Wagoner

400 ft. Radius Map
Ballinger 31-18, 5-18, 22-18, 25-18 Facility

Surface Location: NW/4 NW/4
T3N R67W 18

Description of surface Uses: CROPLAND