

T6S, R97W, 6th P.M.

BERRY PETROLEUM COMPANY

Well location, OXY 28-18D F28 697, located as shown in the SE 1/4 NW 1/4 of Section 28, T6S, R97W, 6th P.M., Garfield County, Colorado.

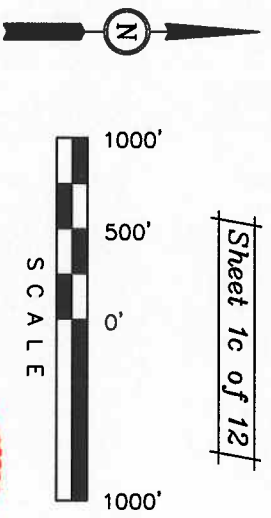
BASIS OF ELEVATION

SPOT ELEVATION AT THE NORTHWEST CORNER OF SECTION 30, T5S, R95W, 6th P.M. TAKEN FROM THE FORKED GULCH QUADRANGLE, COLORADO, GARFIELD COUNTY, 7.5 MINUTE SERIES (TOPOGRAPHICAL MAP) PUBLISHED BY THE UNITED STATES DEPARTMENT OF THE INTERIOR, GEOLOGICAL SURVEY. SAID ELEVATION IS MARKED AS BEING 5966 FEET.

BASIS OF BEARINGS

BASIS OF BEARINGS IS A G.P.S. OBSERVATION.

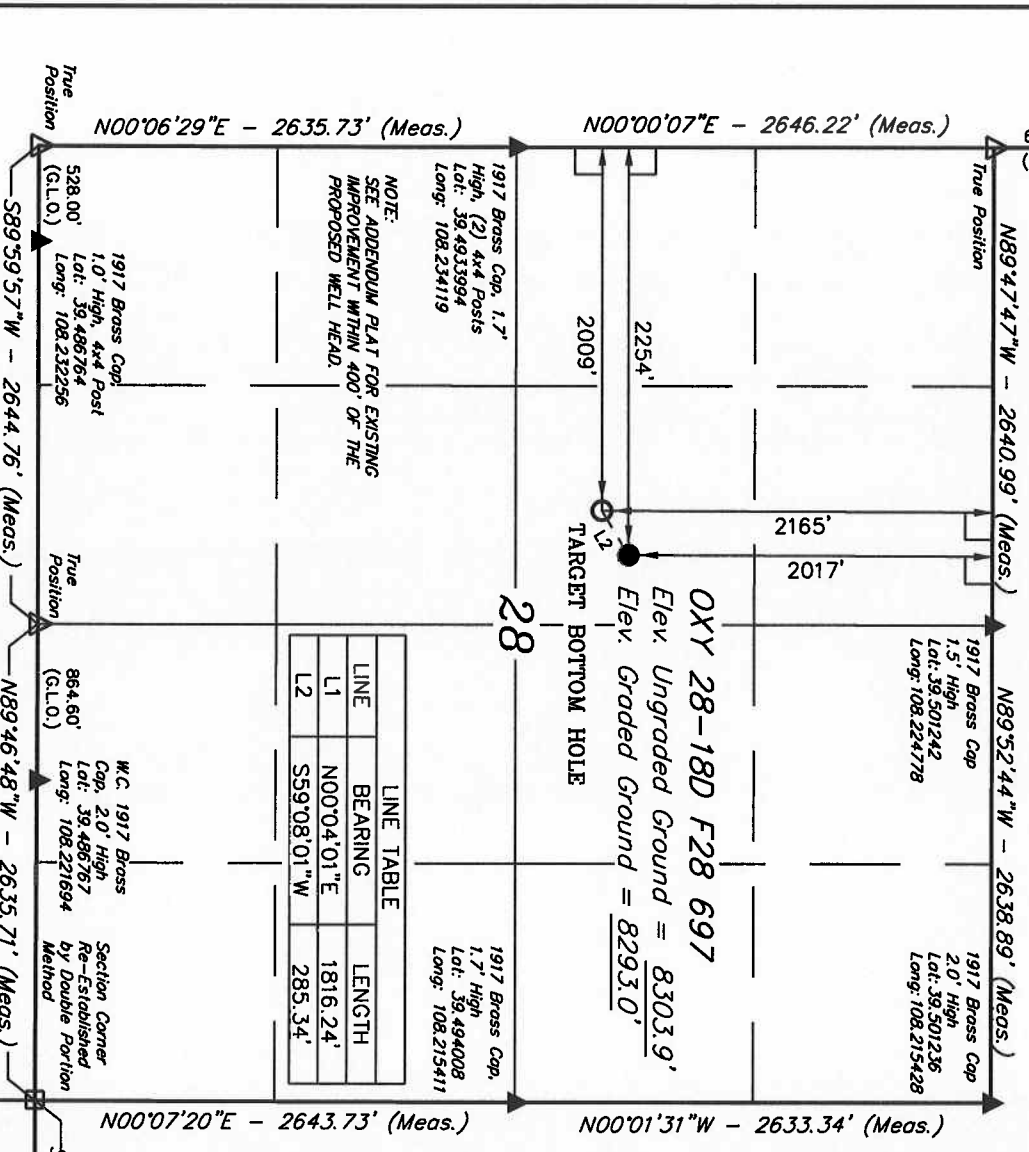
Sheet 1c of 12



CERTIFICATE

THIS IS TO CERTIFY THAT THE ABOVE PLAT WAS PREPARED FROM FIELD NOTES OF ACTUAL SURVEY MADE BY ME OR UNDER MY SUPERVISION AND THAT THE SAID ARE TRUE AND CORRECT TO THE BEST OF MY KNOWLEDGE AND BELIEF.

N 1/4 Cor Sec 34
W.C. 1917 Brass
Cap, 2.2' High
Lot: 39,486,769
Long: 108,206,467
East-105.60
(G.L.O.)
True Position



LINE	BEARING	LENGTH
L1	N00°04'01"E	1816.24'
L2	S59°08'01"W	285.34'

LEGEND:

- 90° SYMBOL
- PROPOSED WELL HEAD.
- SECTION CORNERS LOCATED.
- RE-ESTABLISHED USING DOUBLE PORTION METHOD.

PDOP = 2.3

NAD 83 (TARGET BOTTOM HOLE)	NAD 83 (SURFACE LOCATION)
LATITUDE = 39°29'43.10" (39.495306)	LATITUDE = 39°29'44.55" (39.495708)
LONGITUDE = 108°13'37.22" (108.227006)	LONGITUDE = 108°13'34.10" (108.226139)
NAD 27 (TARGET BOTTOM HOLE)	NAD 27 (SURFACE LOCATION)
LATITUDE = 39°29'43.18" (39.495327)	LATITUDE = 39°29'44.63" (39.495731)
LONGITUDE = 108°13'34.92" (108.226367)	LONGITUDE = 108°13'31.80" (108.225500)

SE Cor Sec 33
1920 Brass Cap,
1.5' High
Lot: 39,481,767
Long: 108,215,422

UINTAH ENGINEERING & LAND SURVEYING
85 SOUTH 200 EAST - VERNAL, UTAH 84078
(435) 789-1017

SCALE	DATE SURVEYED:	DATE DRAWN:
1" = 1000'	08-11-09	08-20-09
PARTY	REFERENCES	FILE
B.U. B.B. D.R.B.	G.L.O. PLAT	BERRY PETROLEUM COMPANY
WEATHER		
WARM		