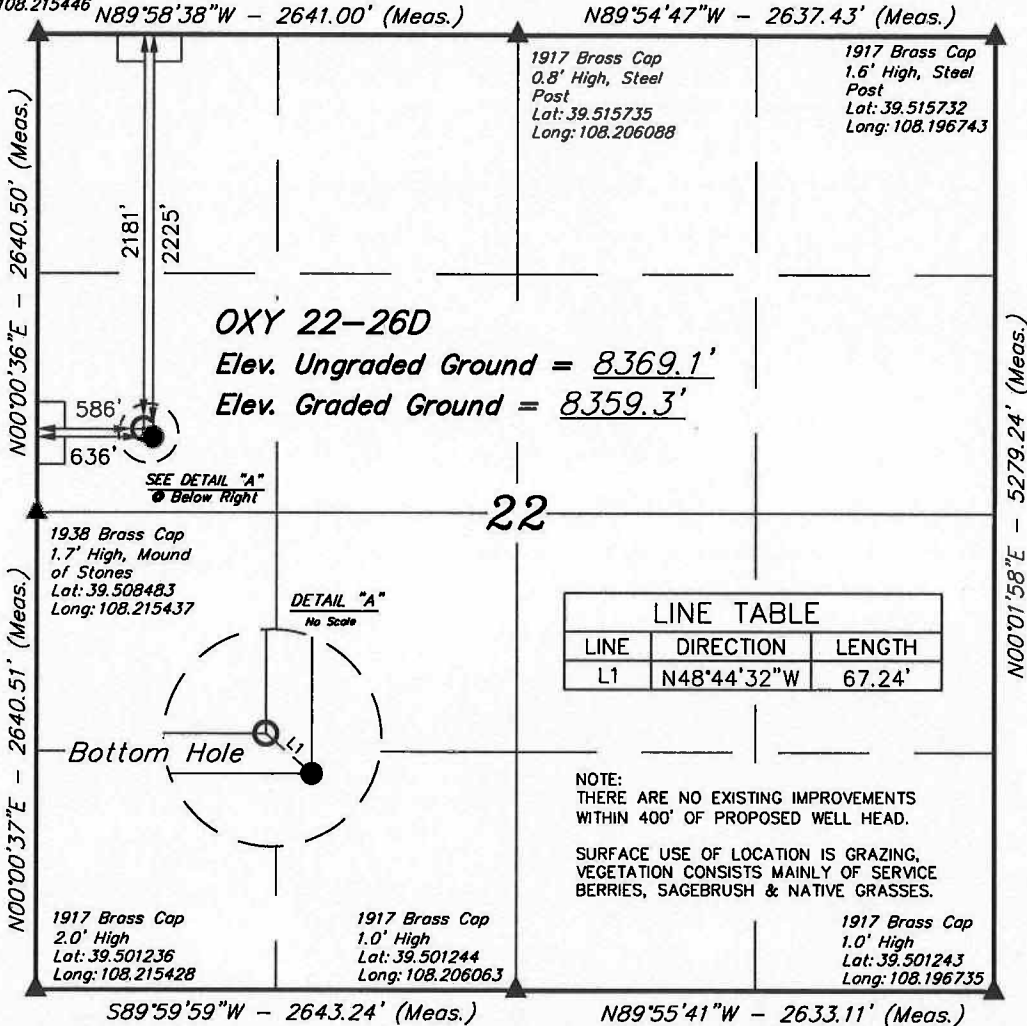


T6S, R97W, 6th P.M.

1917 Brass Cap
1.0' High, Steel
Post
Lat: 39.515730
Long: 108.215446



LEGEND:

- └─ = 90° SYMBOL
● = PROPOSED WELL HEAD.
▲ = SECTION CORNERS LOCATED.

PDOP = 1.4	
NAD 83 (TARGET BOTTOM HOLE)	NAD 83 (SURFACE LOCATION)
LATITUDE = 39°30'35.08" (39.509745)	LATITUDE = 39°30'34.64" (39.509623)
LONGITUDE = 108°12'48.11" (108.213363)	LONGITUDE = 108°12'47.46" (108.213184)
NAD 27 (TARGET BOTTOM HOLE)	NAD 27 (SURFACE LOCATION)
LATITUDE = 39°30'35.16" (39.509767)	LATITUDE = 39°30'34.72" (39.509846)
LONGITUDE = 108°12'45.81" (108.212726)	LONGITUDE = 108°12'45.17" (108.212546)

BERRY PETROLEUM COMPANY

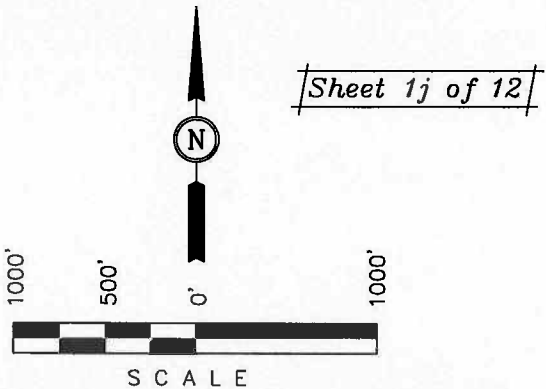
Well location, OXY 22-26D, located as shown
in the SW 1/4 NW 1/4 of Section 22, T6S,
R97W, 6th P.M., Garfield County, Colorado.

BASIS OF ELEVATION

SPOT ELEVATION AT THE NORTHWEST CORNER OF SECTION
30, T5S, R95W, 6th P.M. TAKEN FROM THE FORKED GULCH
QUADRANGLE, COLORADO, GARFIELD COUNTY, 7.5 MINUTE
SERIES (TOPOGRAPHICAL MAP) PUBLISHED BY THE UNITED
STATES DEPARTMENT OF THE INTERIOR, GEOLOGICAL SURVEY.
SAID ELEVATION IS MARKED AS BEING 5966 FEET.

BASIS OF BEARINGS

BASIS OF BEARINGS IS A G.P.S. OBSERVATION.



CERTIFICATE

THIS IS TO CERTIFY THAT THE ABOVE PLAT WAS PREPARED AND
LOCATION AS SHOWN WAS STAKED ON THE GROUND FROM FIELD
NOTES OF ACTUAL SURVEYS MADE BY ME OR UNDER MY
SUPERVISION AND THAT THE SAME ARE TRUE AND CORRECT TO
THE BEST OF MY KNOWLEDGE AND BELIEF.

REGISTERED LAND SURVEYOR
REGISTRATION NO. 17492
STATE OF COLORADO

UINTAH ENGINEERING & LAND SURVEYING
85 SOUTH 200 EAST - VERNAL, UTAH 84078
(435) 789-1017

SCALE 1" = 1000'	DATE SURVEYED: 08-10-09	DATE DRAWN: 09-03-09
PARTY B.J. B.B. C.H.	REFERENCES G.L.O. PLAT	
WEATHER WARM	FILE BERRY PETROLEUM COMPANY	