

# Berry Petroleum Company

1999 Broadway, Suite 3700  
Denver, CO 80202

Main (303) 999-4400  
Fax (303) 999-4401

[www.bry.com](http://www.bry.com)

February 8, 2010

Bruce Vollertsen  
Land Negotiator  
Mid-Continent Business Unit  
Oxy USA, Inc.  
5 Greenway Plaza, Suite 110  
Houston, TX 77046

RE: 30 Day Notice Requirement (Rule 305 and 306)  
OXY 21-1D, 21-3D, 21-4D, 21-5D, 21-9D,  
21-10D, 21-11D, 21-12D, 21-13D, 21-14D, 21-15D,  
21-17D, 21-2D, 21-6D, 21-7D, 21-8D, 21-16D  
**I21 697 Pad** – NESE, Sec. 21 – 6S 97W  
Garfield County, Colorado

Dear Mr. Vollertsen:

Please be advised that Berry Petroleum Company will be filing permits for the wells referenced above with the Colorado Oil and Gas Conservation Commission.

The enclosed notification, pursuant to Rule 305 and 306, is required as part of the permitting process. If applicable, please sign and date where indicated and return to my attention.

Please contact the undersigned if you have any questions.

Thank you for your assistance in this matter.

Very truly yours,

Jerry L. Gonzalez  
Senior Landman  
313-999-4207

:enclosures

cc: Janni Keidel  
Land Well files

**NOTICE REQUIREMENTS (RULE 305)**  
**I21 697 Pad**

**Re: Well Names-- OXY 21-1D, 21-3D, 21-4D, 21-5D, 21-9D,  
21-10D, 21-11D, 21-12D, 21-13D, 21-14D, 21-15D,  
21-17D, 21-2D, 21-6D, 21-7D, 21-8D, and 21-16D  
I21 697 Pad, NESE, Section 21, 6S 97W,  
Garfield County, CO**

In accordance with the Colorado Oil and Gas Conservation Commission for Notices of Oil and Gas Operations, Rule 305, the following information is required to be provided:

- Operations on the above referenced wells are estimated to commence July 6, 2010.
- The operator will be: Berry Petroleum Company  
1999 Broadway, Suite # 3700  
Denver, Colorado 80202  
(303) 999-4400
- You may contact: Jerry L. Gonzalez, Senior Landman at (303) 999-4207, if you have any questions regarding this notice.

**OXY 21-1D**

The legal description of the lands upon which operations will be conducted are:

Surface Hole: 1,795' FSL and 527' FEL, Sec. 21, T6S, R97W

Bottom Hole: 175' FSL and 629' FEL, Sec. 21, T6S, R97W

**OXY 21-3D**

The legal description of the lands upon which operations will be conducted are:

Surface Hole: 1807' FSL and 535' FEL, Sec. 21, T6S, R97W

Bottom Hole: 840' FSL and 624' FEL, Sec. 21, T6S, R97W

**OXY 21-4D**

The legal description of the lands upon which operations will be conducted are:

Surface Hole: 1820' FSL and 543' FEL, Sec. 21, T6S, R97W

Bottom Hole: 1170' FSL and 633' FEL, Sec. 21, T6S, R97W

Page 2

OXY 21-1D, 21-3D, 21-4D, 21-5D, 21-9D,  
21-10D, 21-11D, 21-12D, 21-13D, 21-14D, 21-15D,  
21-2D, 21-6D, 21-7D, 22-8D, 21-16D

**I21 697 Pad**, NESE, Section 21, 6S 97W,

Garfield County, CO

OXY USA Inc.

February 8, 2010

**OXY 21-5D**

The legal description of the lands upon which operations will be conducted are:

Surface Hole: 1,833' FSL and 551' FEL, Sec. 21, T6S, R97W

Bottom Hole: 1,454' FSL and 626' FEL, Sec. 21, T6S, R97W

**OXY 21-9D**

The legal description of the lands upon which operations will be conducted are:

Surface Hole: 1,845' FSL and 559' FEL, Sec. 21, T6S, R97W

Bottom Hole: 205' FSL and 1,967' FEL, Sec. 21, T6S, R97W

**OXY 21-10D**

The legal description of the lands upon which operations will be conducted are:

Surface Hole: 1,858' FSL and 567' FEL, Sec. 21, T6S, R97W

Bottom Hole: 506' FSL and 1,921' FEL, Sec. 21, T6S, R97W

**OXY 21-11D**

The legal description of the lands upon which operations will be conducted are:

Surface Hole: 1,871' FSL and 575' FEL, Sec. 21, T6S, R97W

Bottom Hole: 833' FSL and 1,900' FEL, Sec. 21, T6S, R97W

**OXY 21-12D**

The legal description of the lands upon which operations will be conducted are:

Surface Hole: 1,884' FSL and 583' FEL, Sec. 21, T6S, R97W

Bottom Hole: 1,169' FSL and 1,979' FEL, Sec. 21, T6S, R97W

Page 3

OXY 21-1D, 21-3D, 21-4D, 21-5D, 21-9D,  
21-10D, 21-11D, 21-12D, 21-13D, 21-14D, 21-15D,  
21-2D, 21-6D, 21-7D, 22-8D, 21-16D

**I21 697 Pad**, NESE, Section 21, 6S 97W,

Garfield County, CO

OXY USA Inc.

February 8, 2010

**OXY 21-13D**

The legal description of the lands upon which operations will be conducted are:

Surface Hole: 1,896' FSL and 591' FEL, Sec. 21, T6S, R97W

Bottom Hole: 1,506' FSL and 1,944' FEL, Sec. 21, T6S, R97W

**OXY 21-14D**

The legal description of the lands upon which operations will be conducted are:

Surface Hole: 1,908' FSL and 599' FEL, Sec. 21, T6S, R97W

Bottom Hole: 1,797' FSL and 1,956' FEL, Sec. 21, T6S, R97W

**OXY 21-15D**

The legal description of the lands upon which operations will be conducted are:

Surface Hole: 1,921' FSL and 607' FEL, Sec. 21, T6S, R97W

Bottom Hole: 2,123' FSL and 1,973' FEL, Sec. 21, T6S, R97W

**OXY 21-17D**

The legal description of the lands upon which operations will be conducted are:

Surface Hole: 1,934' FSL and 615' FEL, Sec. 21, T6S, R97W

Bottom Hole: 2,464' FNL and 2,073' FWL, Sec. 21, T6S, R97W

**OXY 21-2D**

The legal description of the lands upon which operations will be conducted are:

Surface Hole: 1800' FSL and 518' FEL, Sec. 21, T6S, R97W

Bottom Hole: 522' FSL and 529' FEL, Sec. 21, T6S, R97W

Page 4

OXY 21-1D, 21-3D, 21-4D, 21-5D, 21-9D,  
21-10D, 21-11D, 21-12D, 21-13D, 21-14D, 21-15D,  
21-2D, 21-6D, 21-7D, 22-8D, 21-16D

**I21 697 Pad**, NESE, Section 21, 6S 97W,

Garfield County, CO

OXY USA Inc.

February 8, 2010

**OXY 21-6D**

The legal description of the lands upon which operations will be conducted are:

Surface Hole: 1,813' FSL and 526' FEL, Sec. 21, T6S, R97W

Bottom Hole: 1,833' FSL and 523' FEL, Sec. 21, T6S, R97W

**OXY 21-7D**

The legal description of the lands upon which operations will be conducted are:

Surface Hole: 1,825' FSL and 534' FEL, Sec. 21, T6S, R97W

Bottom Hole: 2,102' FSL and 572' FEL, Sec. 21, T6S, R97W

**OXY 21-8D**

The legal description of the lands upon which operations will be conducted are:

Surface Hole: 1,838' FSL and 543' FEL, Sec. 21, T6S, R97W

Bottom Hole: 2,430' FSL and 606' FEL, Sec. 21, T6S, R97W

**OXY 21-16D**

The legal description of the lands upon which operations will be conducted are:

Surface Hole: 1,939' FSL and 607' FEL, Sec. 21, T6S, R97W

Bottom Hole: 2,436' FSL and 1,935' FEL, Sec. 21, T6S, R97W

- The surface owner has the responsibility for notifying any affected tenant of the proposed operations.
- A brochure describing surface owner rights is available upon request from:  
Colorado Oil and Gas Conservation Commission  
1120 Lincoln Street  
Suite 801  
Denver, Co 80203

By signing below, the surface owner waives the above notification requirements of Rule 305.

OXY USA Inc.

By: \_\_\_\_\_

Printed Name: \_\_\_\_\_

Title: \_\_\_\_\_

Date: \_\_\_\_\_

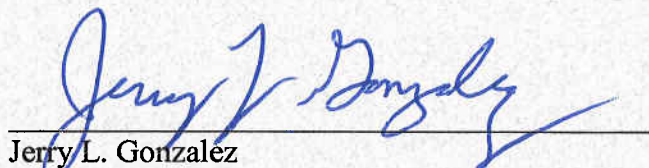
**SURFACE OWNER CONSULTATION (RULE 306)**  
**I21 697 Pad**

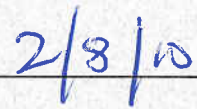
Berry Petroleum Company confirms that the Surface Owner Consultation requirements of Rule 306 have been completed or waived for the following proposed well locations.

**Well Names**                    **OXY 21-1D, 21-3D, 21-4D, 21-5D, 21-9D,**  
   **21-10D, 21-11D, 21-12D, 21-13D, 21-14D, 21-15D,**  
   **21-17D, 21-2D, 21-6D, 21-7D, 21-8D, 21-16D**  
   **I21 697 Pad, NESE, Section 21, 6S 97W,**  
   **Garfield County, CO**

**Road Description:**    Existing roadway use and new construction as required for access was previously agreed upon by all parties.

Berry Petroleum Company

  
\_\_\_\_\_  
Jerry L. Gonzalez  
Senior Landman

  
\_\_\_\_\_  
Date

T6S, R97W, 6th P.M.

BERRY PETROLEUM COMPANY

Well location, OXY 21-1D, located as shown in the NE 1/4 SE 1/4 of Section 21, T6S, R97W, 6th P.M., Garfield County, Colorado.

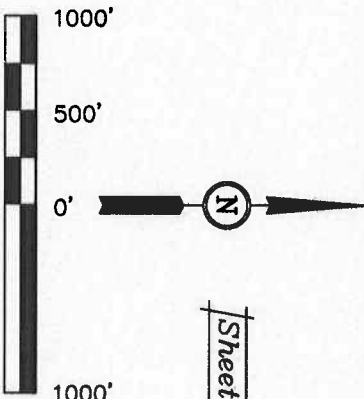
BASIS OF ELEVATION

SPOT ELEVATION AT THE NORTHWEST CORNER OF SECTION 30, T5S, R95W, 6th P.M. TAKEN FROM THE FORKED GULCH QUADRANGLE, COLORADO, GARFIELD COUNTY, 7.5 MINUTE SERIES (TOPOGRAPHICAL MAP) PUBLISHED BY THE UNITED STATES DEPARTMENT OF THE INTERIOR, GEOLOGICAL SURVEY. SAID ELEVATION IS MARKED AS BEING 5966 FEET.

BASIS OF BEARINGS

BASIS OF BEARINGS IS A G.P.S. OBSERVATION.

Sheet 1a of 12



SCALE

CERTIFICATE

THIS IS TO CERTIFY THAT THE ABOVE PLAT WAS PREPARED AND LOCATION AS SHOWN, WAS STAKED ON THE GROUND FROM FIELD NOTES OF ACTUAL SURVEYS MADE BY ME OR UNDER MY SUPERVISION AND THAT THE SAME ARE TRUE AND CORRECT TO THE BEST OF MY KNOWLEDGE AND BELIEF.

1917 Brass Cap  
2.0' High  
Lat: 39.501236  
Long: 108.215428  
REGISTERED LAND SURVEYOR  
REGISTRATION NO. 12482  
STATE OF COLORADO

REVISED: 08-18-09 C.H.

UNTAR ENGINEERING & LAND SURVEYING  
85 SOUTH 200 EAST - VERNAL, UTAH 84078  
(435) 789-1017

SCALE

1" = 1000'

DATE SURVEYED: 01-29-07

DATE DRAWN: 03-07-08

PARTY

B.U. B.H. D.R.B.

REFERENCES

G.L.O. PLAT

WEATHER

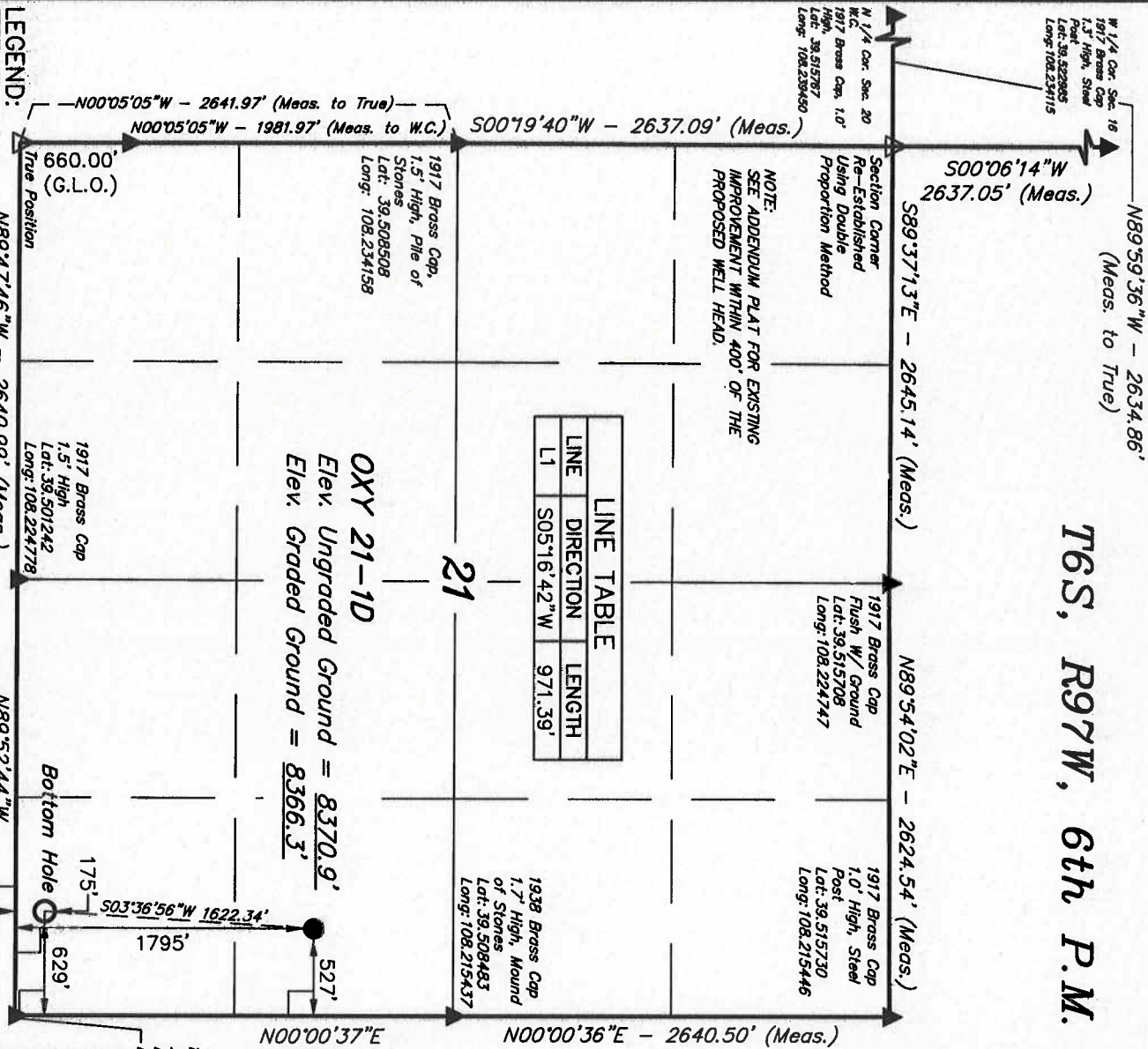
COLD

FILE

BERRY PETROLEUM COMPANY

LINE	DIRECTION	LENGTH
L1	S05°16'42"W	971.39'

OXY 21-1D  
Elev. Ungraded Ground = 8370.9'  
Elev. Graded Ground = 8366.3'



LEGEND:

90° SYMBOL

PROPOSED WELL HEAD.

SECTION CORNERS LOCATED.

SECTION CORNERS RE-ESTABLISHED

(NOT SET ON GROUND)

NAD 83 (TARGET BOTTOM HOLE)	NAD 83 (SURFACE LOCATION)
LATITUDE = 39°30'06.19" (39.501719)	LATITUDE = 39°30'22.19" (39.506164)
LONGITUDE = 108°13'03.56" (108.217656)	LONGITUDE = 108°13'02.28" (108.217300)
NAD 27 (TARGET BOTTOM HOLE)	NAD 27 (SURFACE LOCATION)
LATITUDE = 39°30'06.27" (39.501741)	LATITUDE = 39°30'22.27" (39.506186)
LONGITUDE = 108°13'01.26" (108.217018)	LONGITUDE = 108°12'59.98" (108.216661)

T6S, R97W, 6th P.M.

# BERRY PETROLEUM COMPANY

Well location, OXY 21-3D, located as shown in the NE 1/4 SE 1/4 of Section 21, T6S, R97W, 6th P.M., Garfield County, Colorado.

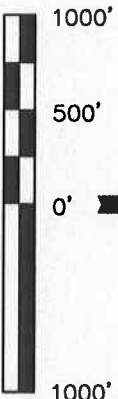
## BASIS OF ELEVATION

SPOT ELEVATION AT THE NORTHWEST CORNER OF SECTION 30, T5S, R95W, 6th P.M. TAKEN FROM THE FORKED GULCH QUADRANGLE, COLORADO, GARFIELD COUNTY, 7.5 MINUTE SERIES (TOPOGRAPHICAL MAP) PUBLISHED BY THE UNITED STATES DEPARTMENT OF THE INTERIOR, GEOLOGICAL SURVEY. SAID ELEVATION IS MARKED AS BEING 5966 FEET.

## BASIS OF BEARINGS

BASIS OF BEARINGS IS A G.P.S. OBSERVATION.

Sheet 1c of 12



SCALE

CERTIFICATE

THIS IS TO CERTIFY THAT THE ABOVE PLAT WAS PREPARED AND LOCATION AS SHOWN WAS STAKED ON THE GROUND FROM FIELD NOTES OF ACTUAL SURVEYS MADE BY ME OR UNDER MY SUPERVISION AND THAT THE SAME ARE TRUE AND CORRECT TO THE BEST OF MY KNOWLEDGE AND BELIEF.

1917 Brass Cap  
2.0' High  
Lat: 39.501236  
Long: 108.215428  
REGISTERED LAND SURVEYOR  
REGISTRATION NO. 17242  
STATE OF COLORADO

REVISOR: 08-18-09 C.H.

UNTAH ENGINEERING & LAND SURVEYING

86 SOUTH 200 EAST - VERNAL, UTAH 84078

(435) 789-1017

SCALE 1" = 1000'

DATE SURVEYED: 01-29-07 DATE DRAWN: 03-07-08

PARTY B.J. B.H. D.R.B. REFERENCES G.L.O. PLAT

WEATHER COLD FILE BERRY PETROLEUM COMPANY

NAD 83 (TARGET BOTTOM HOLE)			
LATITUDE = 39°30'12.75" (39.503542)	NAD 83 (SURFACE LOCATION)	LATITUDE = 39°30'22.38" (39.506217)	
LONGITUDE = 108°13'03.51" (108.217642)		LONGITUDE = 108°13'02.38" (108.217328)	
NAD 27 (TARGET BOTTOM HOLE)			
LATITUDE = 39°30'12.83" (39.503565)	NAD 27 (SURFACE LOCATION)	LATITUDE = 39°30'22.46" (39.506239)	
LONGITUDE = 108°13'01.21" (108.217003)		LONGITUDE = 108°13'00.09" (108.216892)	

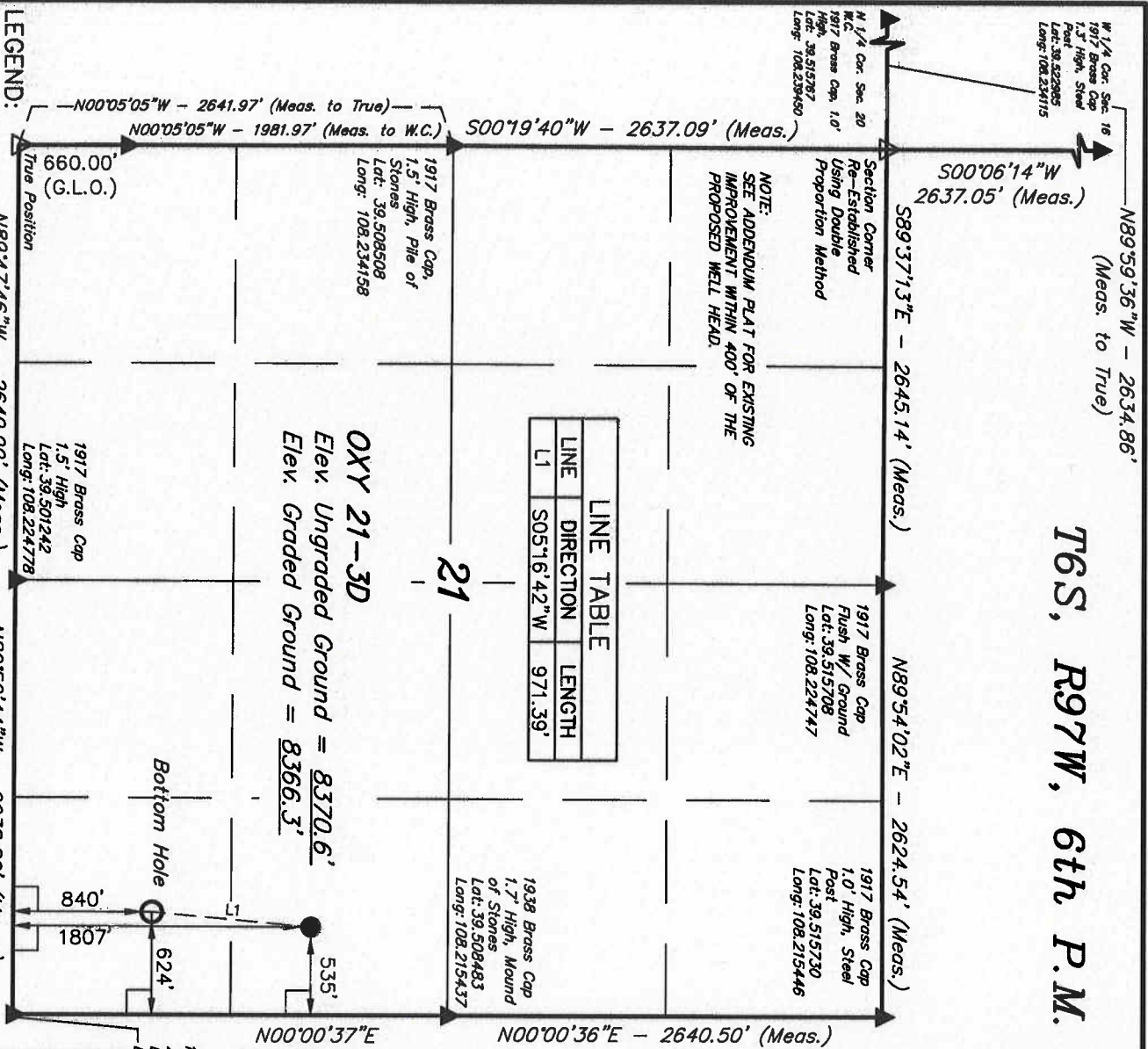
## LEGEND:

90° SYMBOL

PROPOSED WELL HEAD.

SECTION CORNERS LOCATED.

SECTION CORNERS RE-ESTABLISHED (NOT SET ON GROUND)



T6S, R97W, 6th P.M.

BERRY PETROLEUM COMPANY

Well location, OXY 21-4D, located as shown in the NE 1/4 SE 1/4 of Section 21, T6S, R97W, 6th P.M., Garfield County, Colorado.

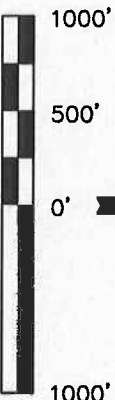
BASIS OF ELEVATION

SPOT ELEVATION AT THE NORTHWEST CORNER OF SECTION 30, T5S, R95W, 6th P.M. TAKEN FROM THE FORKED GULCH QUADRANGLE, COLORADO, GARFIELD COUNTY, 7.5 MINUTE SERIES (TOPOGRAPHICAL MAP) PUBLISHED BY THE UNITED STATES DEPARTMENT OF THE INTERIOR, GEOLOGICAL SURVEY. SAID ELEVATION IS MARKED AS BEING 5966 FEET.

BASIS OF BEARINGS

BASIS OF BEARINGS IS A G.P.S. OBSERVATION.

Sheet 1d of 12



SCALE

CERTIFICATE

THIS IS TO CERTIFY THAT THE ABOVE PLAT WAS PREPARED AND LOCATION AS SHOWN WAS STAKED ON THE GROUND FROM FIELD NOTES OF ACTUAL SURVEYS MADE BY ME OR UNDER MY SUPERVISION AND THAT THE SAME ARE TRUE AND CORRECT TO THE BEST OF MY KNOWLEDGE AND BELIEF.

REGISTERED LAND SURVEYOR  
REGISTRATION NO. 1242  
STATE OF COLORADO

1917 Brass Cap  
2.0' High  
Lat: 39.501236  
Long: 108.215428  
REVISED: 08-18-09 C.H.

UINTAH ENGINEERING & LAND SURVEYING

86 SOUTH 200 EAST - VERNAL, UTAH 84078

(435) 789-1017

SCALE  
1" = 1000'

DATE SURVEYED: 01-29-07 DATE DRAWN: 03-07-08

PARTY  
B.J. B.H. D.R.B.

REFERENCES  
G.L.O. PLAT

WEATHER  
COLD

FILE

BERRY PETROLEUM COMPANY

LEGEND:

= 90° SYMBOL

● = PROPOSED WELL HEAD.

▲ = SECTION CORNERS LOCATED.

△ = SECTION CORNERS RE-ESTABLISHED

(NOT SET ON GROUND)

LINE TABLE		
LINE	DIRECTION	LENGTH
L1	S07°54'37"W	655.61'

OXY 21-4D  
Elev. Ungraded Ground = 8370.3'  
Elev. Graded Ground = 8366.3'

Bottom Hole

1170'  
1820'  
633'  
543'

N00°00'37"E  
2640.51' (Meas.)

N00°00'36"E - 2640.50' (Meas.)

N89°54'02"E - 2624.54' (Meas.)

S89°37'13"E - 2645.14' (Meas.)

N89°59'36"W - 2634.86'  
(Meas. to True)

W 1/4 Cor. Sec. 20  
1917 Brass Cap  
1.5' High, Steel  
Post: 39.522885  
Lat: 39.522885  
Long: 108.234115

Section Corner  
Re-Established  
Using Double  
Proportion Method

W 1/4 Cor. Sec. 20  
1917 Brass Cap, 1.0'  
1.5' High, Steel  
Post: 39.515787  
Lat: 39.515787  
Long: 108.239450

1917 Brass Cap  
Flush W/ Ground  
Post: 39.515708  
Lat: 39.515708  
Long: 108.224147

1917 Brass Cap  
1.0' High, Steel  
Post: 39.515730  
Lat: 39.515730  
Long: 108.215446

1936 Brass Cap  
1.7' High, Mound  
of Stones  
Lat: 39.508483  
Long: 108.215437

1917 Brass Cap,  
1.5' High, Pile of  
Stones  
Lat: 39.508508  
Long: 108.234158

1917 Brass Cap  
1.5' High  
Lat: 39.501242  
Long: 108.224178

N89°47'46"W - 2640.99' (Meas.)

N89°52'44"W - 2638.89' (Meas.)

PDOP = 3.7

NAD 83 (SURFACE LOCATION)

NAD 83 (TARGET BOTTOM HOLE)

NAD 27 (SURFACE LOCATION)

NAD 27 (TARGET BOTTOM HOLE)

NAD 83 (SURFACE LOCATION)

NAD 83 (TARGET BOTTOM HOLE)

N89°59'36"W - 2634.86'  
(Meas. to True)

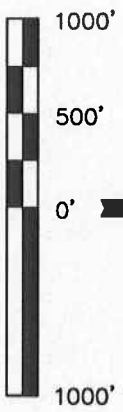
T6S, R97W, 6th P.M.

**BERRY PETROLEUM COMPANY**  
Well location, OXY 21-5D, located as shown in the NE 1/4 SE 1/4 of Section 21, T6S, R97W, 6th P.M., Garfield County, Colorado.  
BASIS OF ELEVATION

SPOT ELEVATION AT THE NORTHWEST CORNER OF SECTION 30, T5S, R95W, 6th P.M. TAKEN FROM THE FORKED GULCH QUADRANGLE, COLORADO, GARFIELD COUNTY, 7.5 MINUTE SERIES (TOPOGRAPHICAL MAP) PUBLISHED BY THE UNITED STATES DEPARTMENT OF THE INTERIOR, GEOLOGICAL SURVEY. SAID ELEVATION IS MARKED AS BEING 5966 FEET.

BASIS OF BEARINGS  
BASIS OF BEARINGS IS A G.P.S. OBSERVATION.

LINE TABLE		
LINE	DIRECTION	LENGTH
L1	S11°11'14"W	385.27'



CERTIFICATE

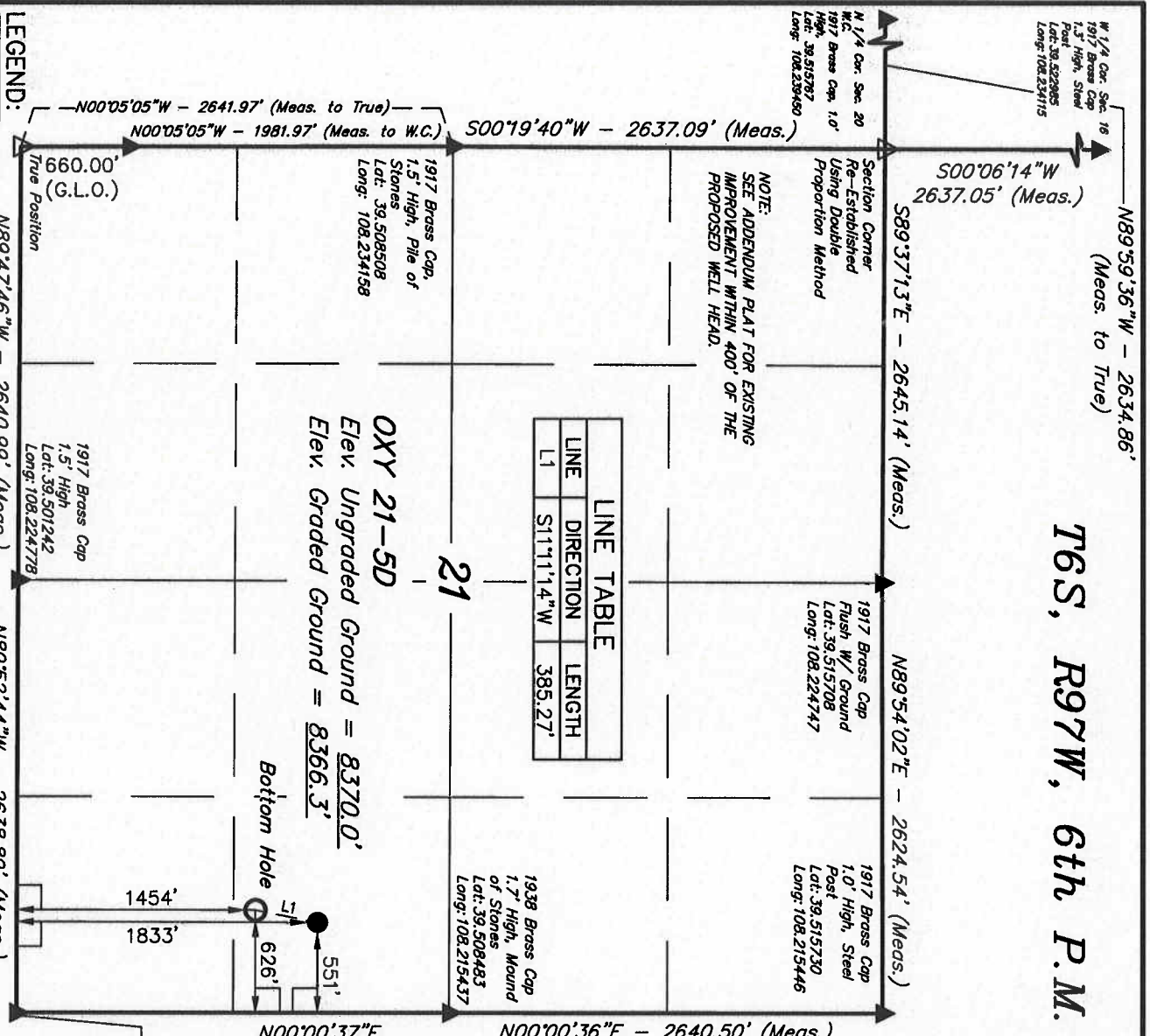
THIS IS TO CERTIFY THAT THE ABOVE PLAT WAS PREPARED AND LOCATION AS SHOWN WAS STAKED ON THE GROUND FROM FIELD NOTES OF ACTUAL SURVEYS MADE BY ME OR UNDER MY SUPERVISION AND THAT THE SAME ARE TRUE AND CORRECT TO THE BEST OF MY KNOWLEDGE AND BELIEF.

1917 Brass Cap  
2.0' High  
Lat: 39.501235  
Long: 108.215428  
REVISED: 08-18-09 C.H.

**UNTAN ENGINEERING & LAND SURVEYING**  
85 SOUTH 200 EAST - VERNAL, UTAH 84078  
(435) 789-1017

SCALE	DATE SURVEYED:	DATE DRAWN:
1" = 1000'	01-29-07	03-07-08

PARTY	REFERENCES	FILE
B.J. B.H. D.R.B.	G.L.O. PLAT	BERRY PETROLEUM COMPANY



LEGEND:

- = PROPOSED WELL HEAD.
- ▲ = SECTION CORNERS LOCATED.
- △ = SECTION CORNERS RE-ESTABLISHED.
- (NOT SET ON GROUND)

NAD 83 (TARGET BOTTOM HOLE)		NAD 83 (SURFACE LOCATION)	
LATITUDE = 39°30'18.83" (39.505231)	LATITUDE = 39°30'22.56" (39.506267)	PDOP = 3.7	
LONGITUDE = 108°13'03.54" (108.217650)	LONGITUDE = 108°13'02.59" (108.217386)		
NAD 27 (TARGET BOTTOM HOLE)		NAD 27 (SURFACE LOCATION)	
LATITUDE = 39°30'18.91" (39.505252)	LATITUDE = 39°30'22.64" (39.506289)		
LONGITUDE = 108°13'01.24" (108.217011)	LONGITUDE = 108°13'00.29" (108.216747)		

T6S, R97W, 6th P.M.

# BERRY PETROLEUM COMPANY

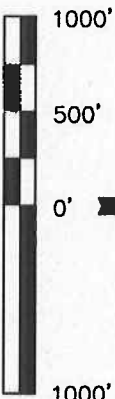
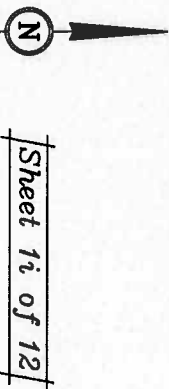
Well location, OXY 21-9D, located as shown in the NE 1/4 SE 1/4 of Section 21, T6S, R97W, 6th P.M., Garfield County, Colorado.

## BASIS OF ELEVATION

SPOT ELEVATION AT THE NORTHWEST CORNER OF SECTION 30, T5S, R95W, 6th P.M. TAKEN FROM THE FORKED GULCH QUADRANGLE, COLORADO, GARFIELD COUNTY, 7.5 MINUTE SERIES (TOPOGRAPHICAL MAP) PUBLISHED BY THE UNITED STATES DEPARTMENT OF THE INTERIOR, GEOLOGICAL SURVEY. SAID ELEVATION IS MARKED AS BEING 5966 FEET.

## BASIS OF BEARINGS

BASIS OF BEARINGS IS A G.P.S. OBSERVATION.



## CERTIFICATE

THIS IS TO CERTIFY THAT THE ABOVE PLAT WAS PREPARED AND LOCATION AS SHOWN WAS STAKED ON THE GROUND FROM FIELD NOTES OF ACTUAL SURVEYS MADE BY ME OR UNDER MY SUPERVISION AND THAT THE SAME ARE TRUE AND CORRECT TO THE BEST OF MY KNOWLEDGE AND BELIEF.

1917 Brass Cap  
2.0' High  
Lat: 39.501236  
Long: 108.215428  
REVISED: 08-18-09 C.H.

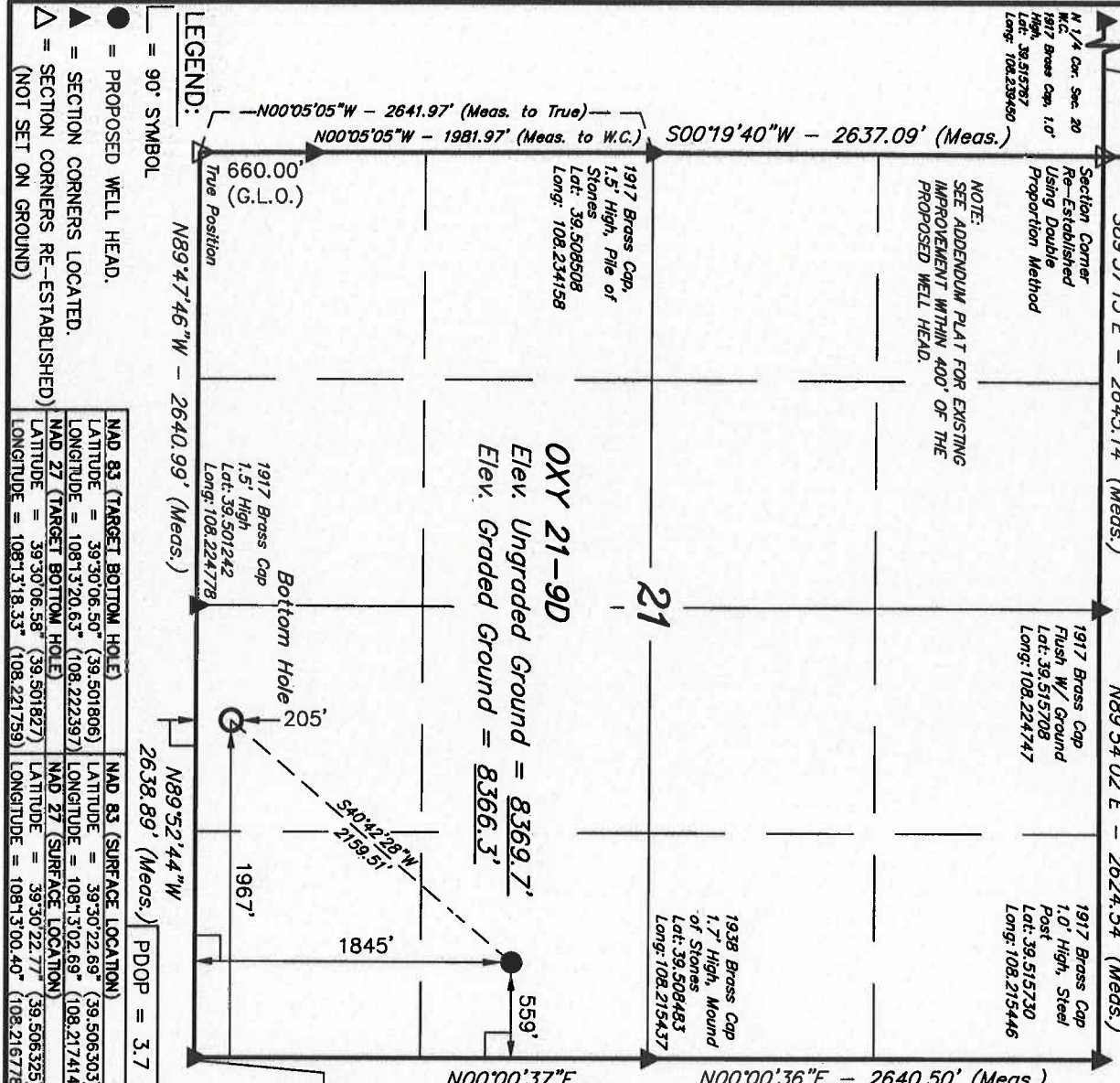
## UNTAH ENGINEERING & LAND SURVEYING

86 SOUTH 200 EAST - VERNAL, UTAH 84078  
(435) 789-1017

SCALE 1" = 1000'

PARTY B.J. B.H. D.R.B. REFERENCES G.L.O. PLAT

WEATHER COLD FILE BERRY PETROLEUM COMPANY



● = PROPOSED WELL HEAD.	NAD 83 (TARGET BOTTOM HOLE)	NAD 83 (SURFACE LOCATION)
▲ = SECTION CORNERS LOCATED.	LATITUDE = 39°30'06.50" (39.501806)	LATITUDE = 39°30'22.69" (39.506303)
△ = SECTION CORNERS RE-ESTABLISHED (NOT SET ON GROUND)	LONGITUDE = 108°13'20.63" (108.222397)	LONGITUDE = 108°13'02.69" (108.217414)
	NAD 27 (TARGET BOTTOM HOLE)	NAD 27 (SURFACE LOCATION)
	LATITUDE = 39°30'06.58" (39.501827)	LATITUDE = 39°30'22.77" (39.506325)
	LONGITUDE = 108°13'18.33" (108.221759)	LONGITUDE = 108°13'00.40" (108.216778)

PDOP = 3.7

N89°59'36"W - 2634.86'  
(Meas. to True)

T6S, R97W, 6th P.M.

**BERRY PETROLEUM COMPANY**

Well location, OXY 21-10D, located as shown in the NE 1/4 SE 1/4 of Section 21, T6S, R97W, 6th P.M., Garfield County, Colorado.

**BASIS OF ELEVATION**

SPOT ELEVATION AT THE NORTHWEST CORNER OF SECTION 30, T5S, R95W, 6th P.M. TAKEN FROM THE FORKED GULCH QUADRANGLE, COLORADO, GARFIELD COUNTY, 7.5 MINUTE SERIES (TOPOGRAPHICAL MAP) PUBLISHED BY THE UNITED STATES DEPARTMENT OF THE INTERIOR, GEOLOGICAL SURVEY. SAID ELEVATION IS MARKED AS BEING 5966 FEET.

**BASIS OF BEARINGS**

BASIS OF BEARINGS IS A G.P.S. OBSERVATION.

Sheet 1j of 12



**CERTIFICATE**

THIS IS TO CERTIFY THAT THE ABOVE PLAT WAS PREPARED AND LOCATION AS SHOWN WAS STAKED ON THE GROUND FROM FIELD NOTES OF ACTUAL SURVEYS MADE BY ME OR UNDER MY SUPERVISION AND THAT THE SAME ARE TRUE AND CORRECT TO THE BEST OF MY KNOWLEDGE AND BELIEF.

1917 Brass Cap  
2.0' High  
Lat: 39.501236  
Long: 108.215428  
REVISED: 08-18-09 C.H.

**UNTAR ENGINEERING & LAND SURVEYING**

85 SOUTH 200 EAST - VERNAL, UTAH 84078

(435) 789-1017

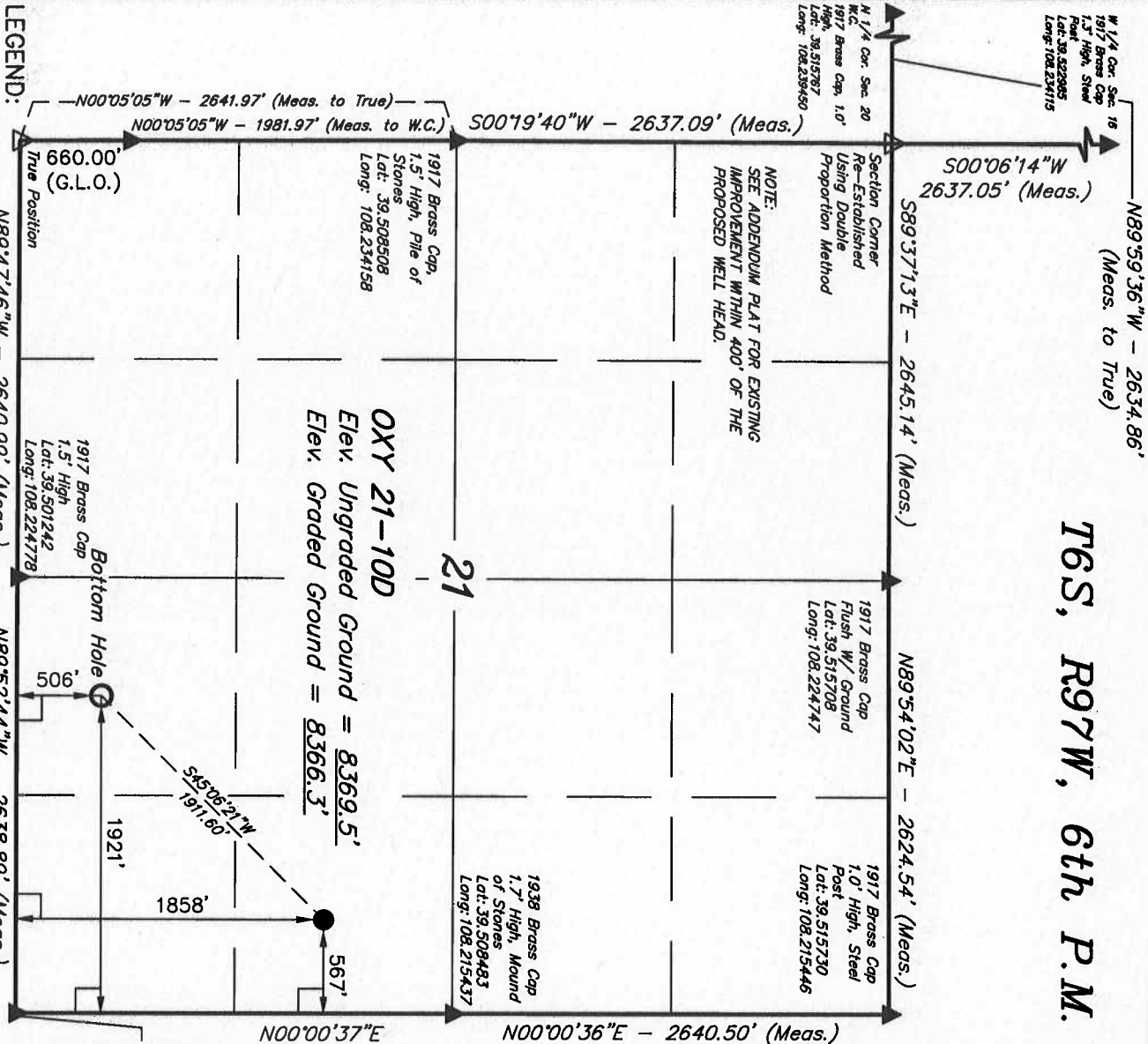
SCALE 1" = 1000'

DATE SURVEYED: 01-29-07 DATE DRAWN: 03-07-08

PARTY B.J. B.H. D.R.B. REFERENCES G.L.O. PLAT

WEATHER COLD FILE BERRY PETROLEUM COMPANY

PDOP = 3.7



**LEGEND:**

- = PROPOSED WELL HEAD.
- ▲ = SECTION CORNERS LOCATED.
- △ = SECTION CORNERS RE-ESTABLISHED (NOT SET ON GROUND)

NAD 83 (TARGET BOTTOM HOLE)		NAD 83 (SURFACE LOCATION)	
LATITUDE = 39°30'09.46"	(39.502628)	LATITUDE = 39°30'22.81"	(39.506336)
LONGITUDE = 108°13'20.05"	(108.222236)	LONGITUDE = 108°13'02.80"	(108.217444)
NAD 22 (TARGET BOTTOM HOLE)		NAD 22 (SURFACE LOCATION)	
LATITUDE = 39°30'09.34"	(39.502651)	LATITUDE = 39°30'22.89"	(39.506358)
LONGITUDE = 108°13'17.75"	(108.221597)	LONGITUDE = 108°13'00.50"	(108.216906)

N89°59'36"W - 2634.86'  
(Meas. to True)

T6S, R97W, 6th P.M.

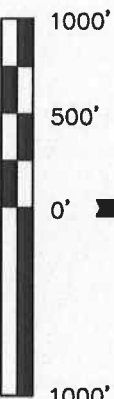
**BERRY PETROLEUM COMPANY**  
Well location, OXY 21-11D, located as shown in the NE 1/4 SE 1/4 of Section 21, T6S, R97W, 6th P.M., Garfield County, Colorado.  
BASIS OF ELEVATION

SPOT ELEVATION AT THE NORTHWEST CORNER OF SECTION 30, T5S, R95W, 6th P.M. TAKEN FROM THE FORKED GULCH QUADRANGLE, COLORADO, GARFIELD COUNTY, 7.5 MINUTE SERIES (TOPOGRAPHICAL MAP) PUBLISHED BY THE UNITED STATES DEPARTMENT OF THE INTERIOR, GEOLOGICAL SURVEY. SAID ELEVATION IS MARKED AS BEING 5966 FEET.

**BASIS OF BEARINGS**

BASIS OF BEARINGS IS A G.P.S. OBSERVATION.

Sheet 1k of 12



SCALE

**CERTIFICATE**

THIS IS TO CERTIFY THAT THE ABOVE PLAT WAS PREPARED AND LOCATION AS SHOWN WAS STAKED ON THE GROUND IN THE FIELD NOTES OF ACTUAL SURVEYS MADE BY ME OR UNDER MY SUPERVISION AND THAT THE SAME ARE TRUE AND CORRECT TO THE BEST OF MY KNOWLEDGE AND BELIEF.

1917 Brass Cap  
2.0' High  
Lat: 39.501236  
Long: 108.215428  
REGISTERED AND SURVEYOR  
REGISTRATION NO. 12490  
STATE OF COLORADO

REVISED: 08-18-09 C.H.

**UINTAH ENGINEERING & LAND SURVEYING**  
85 SOUTH 200 EAST - VERNAL, UTAH 84078  
(435) 789-1017

SCALE 1" = 1000'

PARTY

DATE SURVEYED:

DATE DRAWN:

B.J. B.H. D.R.B.

REFERENCES

G.L.O. PLAT

WEATHER

FILE

BERRY PETROLEUM COMPANY

**LEGEND:**

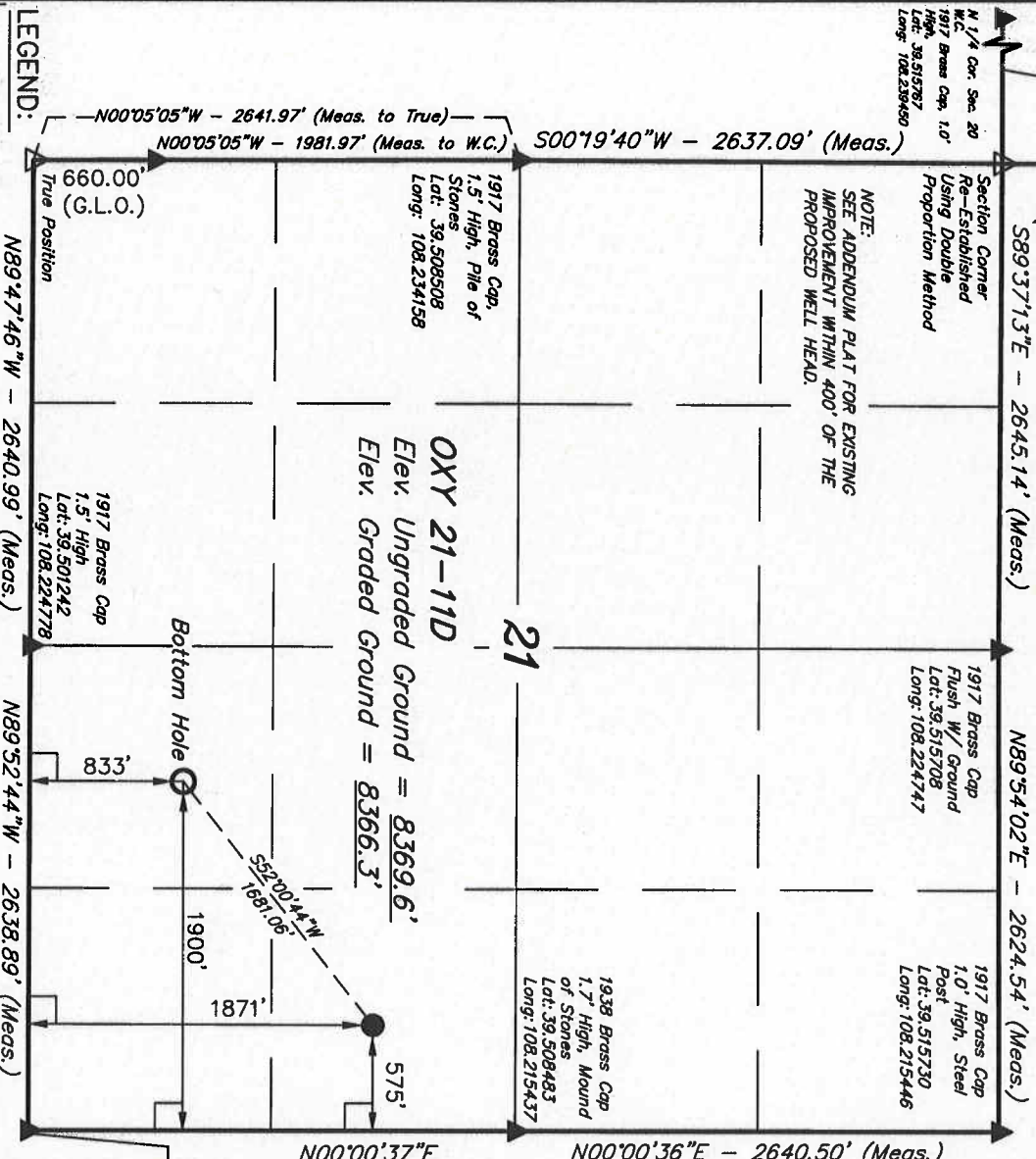
= 90° SYMBOL

● = PROPOSED WELL HEAD.

▲ = SECTION CORNERS LOCATED.

△ = SECTION CORNERS RE-ESTABLISHED  
(NOT SET ON GROUND)

NAD 83 (TARGET BOTTOM HOLE)		NAD 83 (SURFACE LOCATION)	
LATITUDE = 39°30'12.70" (39.503528)	LATITUDE = 39°30'22.94" (39.506372)	PDOP = 3.7	
LONGITUDE = 108°13'19.78" (108.222161)	LONGITUDE = 108°13'02.90" (108.217472)		
NAD 27 (TARGET BOTTOM HOLE)		NAD 27 (SURFACE LOCATION)	
LATITUDE = 39°30'12.78" (39.503550)	LATITUDE = 39°30'23.02" (39.506394)		
LONGITUDE = 108°13'17.48" (108.221523)	LONGITUDE = 108°13'00.60" (108.216833)		



**LEGEND:**

= 90° SYMBOL

● = PROPOSED WELL HEAD.

▲ = SECTION CORNERS LOCATED.

△ = SECTION CORNERS RE-ESTABLISHED  
(NOT SET ON GROUND)

NAD 83 (TARGET BOTTOM HOLE)		NAD 83 (SURFACE LOCATION)	
LATITUDE = 39°30'12.70" (39.503528)	LATITUDE = 39°30'22.94" (39.506372)	PDOP = 3.7	
LONGITUDE = 108°13'19.78" (108.222161)	LONGITUDE = 108°13'02.90" (108.217472)		
NAD 27 (TARGET BOTTOM HOLE)		NAD 27 (SURFACE LOCATION)	
LATITUDE = 39°30'12.78" (39.503550)	LATITUDE = 39°30'23.02" (39.506394)		
LONGITUDE = 108°13'17.48" (108.221523)	LONGITUDE = 108°13'00.60" (108.216833)		

T6S, R97W, 6th P.M.

# BERRY PETROLEUM COMPANY

Well location, OXY 21-12D, located as shown in the NE 1/4 SE 1/4 of Section 21, T6S, R97W, 6th P.M., Garfield County, Colorado.

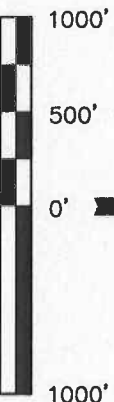
## BASIS OF ELEVATION

SPOT ELEVATION AT THE NORTHWEST CORNER OF SECTION 30, T5S, R95W, 6th P.M. TAKEN FROM THE FORKED GULCH QUADRANGLE, COLORADO, GARFIELD COUNTY, 7.5 MINUTE SERIES (TOPOGRAPHICAL MAP) PUBLISHED BY THE UNITED STATES DEPARTMENT OF THE INTERIOR, GEOLOGICAL SURVEY. SAID ELEVATION IS MARKED AS BEING 5966 FEET.

## BASIS OF BEARINGS

BASIS OF BEARINGS IS A C.P.S. OBSERVATION.

Sheet 11 of 12



SCALE

## CERTIFICATE

THIS IS TO CERTIFY THAT THE ABOVE PLAT WAS PREPARED AND LOCATION AS SHOWN WAS STAKED ON THE GROUND FROM FIELD NOTES OF ACTUAL SURVEYS MADE BY ME OR UNDER MY CLOSE SUPERVISION AND THAT THE SAME ARE TRUE AND CORRECT TO THE BEST OF MY KNOWLEDGE AND BELIEF.

1917 Brass Cap  
2.0' High  
Lat: 39.501236  
Long: 108.215428  
REGISTERED LAND SURVEYOR  
REGISTRATION NO. 12345  
STATE OF COLORADO

REVISED: 08-18-09 C.H.

## UNTAR ENGINEERING & LAND SURVEYING

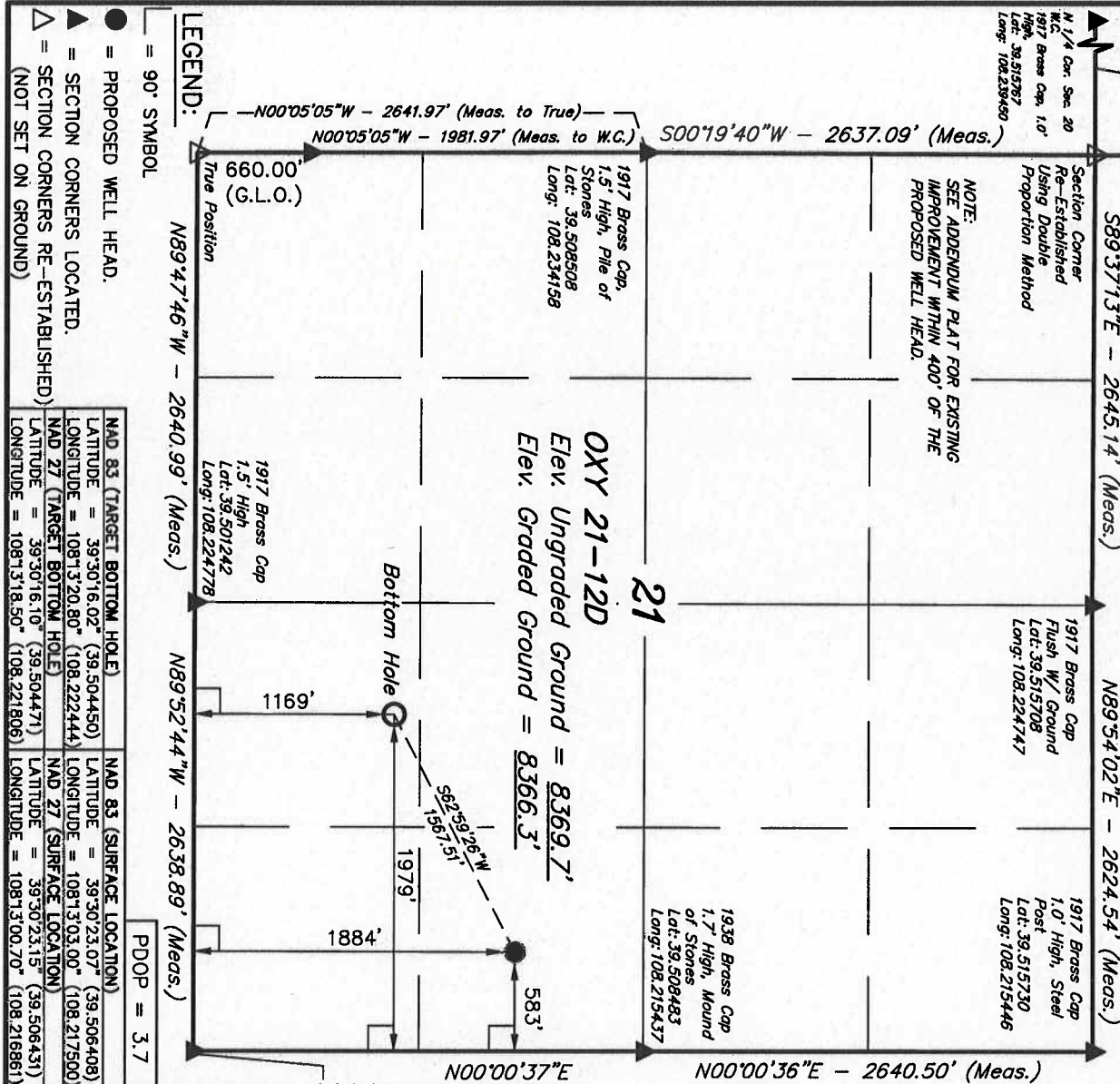
85 SOUTH 200 EAST - VERNAL, UTAH 84078

(435) 789-1017

SCALE	DATE SURVEYED:	DATE DRAWN:
1" = 1000'	01-29-07	03-07-08

PARTY	REFERENCES
B.J. B.H. D.R.B.	G.L.O. PLAT

WEATHER	FILE
COLD	BERRY PETROLEUM COMPANY



- = PROPOSED WELL HEAD.
- ▲ = SECTION CORNERS LOCATED.
- △ = SECTION CORNERS RE-ESTABLISHED (NOT SET ON GROUND)

## LEGEND:

T6S, R97W, 6th P.M.

# BERRY PETROLEUM COMPANY

Well location, OXY 21-13D, located as shown in the NE 1/4 SE 1/4 of Section 21, T6S, R97W, 6th P.M., Garfield County, Colorado.

## BASIS OF ELEVATION

SPOT ELEVATION AT THE NORTHWEST CORNER OF SECTION 30, T5S, R95W, 6th P.M. TAKEN FROM THE FORKED GULCH QUADRANGLE, COLORADO, GARFIELD COUNTY, 7.5 MINUTE SERIES (TOPOGRAPHICAL MAP) PUBLISHED BY THE UNITED STATES DEPARTMENT OF THE INTERIOR, GEOLOGICAL SURVEY. SAID ELEVATION IS MARKED AS BEING 5966 FEET.

## BASIS OF BEARINGS

BASIS OF BEARINGS IS A G.P.S. OBSERVATION.

Sheet 1m of 12



## CERTIFICATE

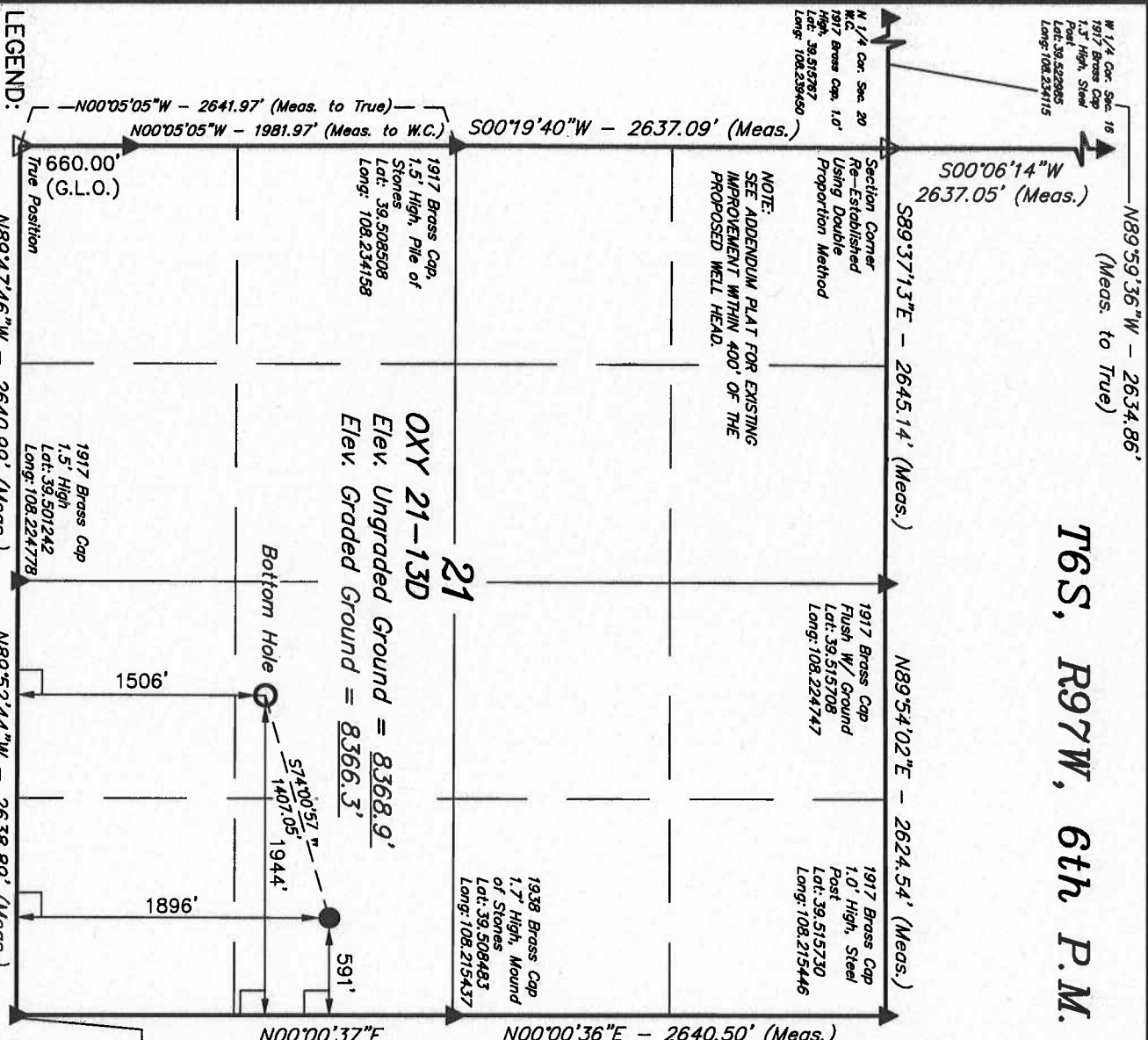
THIS IS TO CERTIFY THAT THE ABOVE PLAT WAS PREPARED AND LOCATIONS AS SHOWN, WAS STAKED ON THE GROUND FROM FIELD NOTES OF ACTUAL SURVEYS MADE BY ME OF LAND IN THE SUPERVISION AND THAT THE SAME ARE TRUE AND CORRECT TO THE BEST OF MY KNOWLEDGE AND BELIEF.

REGISTERED LAND SURVEYOR  
REGISTRATION NO. 1482  
STATE OF COLORADO

REVISED: 08-18-09 C.H.

UNTAH ENGINEERING & LAND SURVEYING  
86 SOUTH 200 EAST - VERNAL, UTAH 84078  
(435) 789-1017

LEGEND:		PDOP = 3.7	
●	= PROPOSED WELL HEAD.	SCALE	1" = 1000'
▲	= SECTION CORNERS LOCATED.	PARTY	B.U. B.H. D.R.B.
△	= SECTION CORNERS RE-ESTABLISHED (NOT SET ON GROUND)	WEATHER	COLD
		DATE SURVEYED:	01-29-07
		DATE DRAWN:	03-07-08
		REFERENCES	G.L.O. PLAT
		FILE	BERRY PETROLEUM COMPANY



WEATHER	FILE
COLD	BERRY PETROLEUM COMPANY

N89°59'36"W - 2634.86'  
(Meas. to True)

T6S, R97W, 6th P.M.

Well location, OXY 21-15D, located as shown in the NE 1/4 SE 1/4 of Section 21, T6S, R97W, 6th P.M., Garfield County, Colorado.

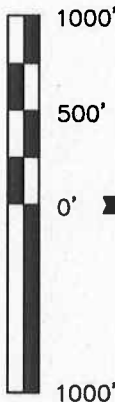
BASIS OF ELEVATION

SPOT ELEVATION AT THE NORTHWEST CORNER OF SECTION 30, T5S, R95W, 6th P.M. TAKEN FROM THE FORKED GULCH QUADRANGLE, COLORADO, GARFIELD COUNTY, 7.5 MINUTE SERIES (TOPOGRAPHICAL MAP) PUBLISHED BY THE UNITED STATES DEPARTMENT OF THE INTERIOR, GEOLOGICAL SURVEY. SAID ELEVATION IS MARKED AS BEING 5966 FEET.

BASIS OF BEARINGS

BASIS OF BEARINGS IS A G.P.S. OBSERVATION.

Sheet 10 of 12



SCALE

CERTIFICATE

THIS IS TO CERTIFY THAT THE ABOVE PLAT WAS PREPARED AND LOCATION AS SHOWN, WAS STAKED ON THE GROUND FROM FIELD NOTES OF ACTUAL SURVEYS MADE BY ME OR UNDER MY CLOSE SUPERVISION AND THAT THE SAME ARE TRUE AND CORRECT TO THE BEST OF MY KNOWLEDGE AND BELIEF.

1917 Brass Cap  
2.0' High  
Lat: 39.501236  
Long: 108.213428  
REGISTERED LAND SURVEYOR  
REGISTRATION NO. 17452  
STATE OF COLORADO

UNTAR ENGINEERING & LAND SURVEYING  
86 SOUTH 200 EAST - VERNAL, UTAH 84078  
(436) 789-1017

SCALE	DATE SURVEYED:	DATE DRAWN:
1" = 1000'	01-29-07	03-07-08

PARTY	REFERENCES	FILE
B.U. B.H. D.R.B.	G.L.O. PLAT	BERRY PETROLEUM COMPANY
WEATHER		
COLD		

W 1/4 Cor. Sec. 20  
1917 Brass Cap  
1.5' High, Steel  
Post: 39.522985  
Lat: 39.522985  
Long: 108.234115

S00°06'14"W  
2637.05' (Meas.)

S89°37'13"E - 2645.14' (Meas.)

N89°54'02"E - 2624.54' (Meas.)

1917 Brass Cap  
Flush w/ Ground  
Lat: 39.515708  
Long: 108.224747

1917 Brass Cap  
1.0' High, Steel  
Post  
Lat: 39.515730  
Long: 108.215446

NOTE:  
SEE ADDENDUM PLAT FOR EXISTING  
IMPROVEMENT WITHIN 400' OF THE  
PROPOSED WELL HEAD.

N 1/4 Cor. Sec. 20  
W.C.  
1917 Brass Cap, 1.0'  
High  
Lat: 39.515787  
Long: 108.239450

S00°19'40"W - 2637.09' (Meas.)

N00°05'05"W - 1981.97' (Meas. to W.C.)  
N00°05'05"W - 2641.97' (Meas. to True)

1917 Brass Cap,  
1.5' High, Pile of  
Stones  
Lat: 39.508508  
Long: 108.234158

OXY 21-15D

Elev. Ungraded Ground = 8368.7'  
Elev. Graded Ground = 8366.3'

Bottom Hole

21

1938 Brass Cap  
1.7' High, Mound  
of Stones  
Lat: 39.508483  
Long: 108.213437

N00°00'37"E  
2640.51' (Meas.)

N00°00'36"E - 2640.50' (Meas.)

1973'

607'

2123'

1921'

N89°47'46"W - 2640.99' (Meas.)

N89°52'44"W - 2638.89' (Meas.)

LEGEND:

90° SYMBOL

PROPOSED WELL HEAD.

SECTION CORNERS LOCATED.

SECTION CORNERS RE-ESTABLISHED  
(NOT SET ON GROUND)

NAD 83 (TARGET BOTTOM HOLE)	NAD 83 (SURFACE LOCATION)
LATITUDE = 39°30'25.45" (39.507069) LONGITUDE = 108°13'20.75" (108.222425)	LATITUDE = 39°30'23.44" (39.506511) LONGITUDE = 108°13'03.31" (108.217586)
NAD 27 (TARGET BOTTOM HOLE)	NAD 27 (SURFACE LOCATION)
LATITUDE = 39°30'25.53" (39.507090) LONGITUDE = 108°13'18.43" (108.221786)	LATITUDE = 39°30'23.52" (39.506533) LONGITUDE = 108°13'01.01" (108.216947)

PDOP = 3.7

T6S, R97W, 6th P.M.

BERRY PETROLEUM COMPANY

Well location, OXY 21-17D, located as shown in the NE 1/4 SE 1/4 of Section 21, T6S, R97W, 6th P.M., Garfield County, Colorado.

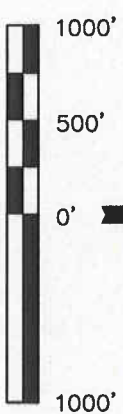
BASIS OF ELEVATION

SPOT ELEVATION AT THE NORTHWEST CORNER OF SECTION 30, T5S, R95W, 6th P.M. TAKEN FROM THE FORKED GULCH QUADRANGLE, COLORADO, GARFIELD COUNTY, 7.5 MINUTE SERIES (TOPOGRAPHICAL MAP) PUBLISHED BY THE UNITED STATES DEPARTMENT OF THE INTERIOR, GEOLOGICAL SURVEY. SAID ELEVATION IS MARKED AS BEING 5966 FEET.

BASIS OF BEARINGS

BASIS OF BEARINGS IS A G.P.S. OBSERVATION.

Sheet 1g of 12



SCALE

CERTIFICATE

THIS IS TO CERTIFY THAT THE ABOVE PLAT WAS PREPARED AND LOCATION AS SHOWN WAS STAKED ON THE GROUND FROM FIELD NOTES OF ACTUAL SURVEYS MADE BY ME OR UNDER MY SUPERVISION AND THAT THE SAME ARE TRUE AND CORRECT TO THE BEST OF MY KNOWLEDGE AND BELIEF.

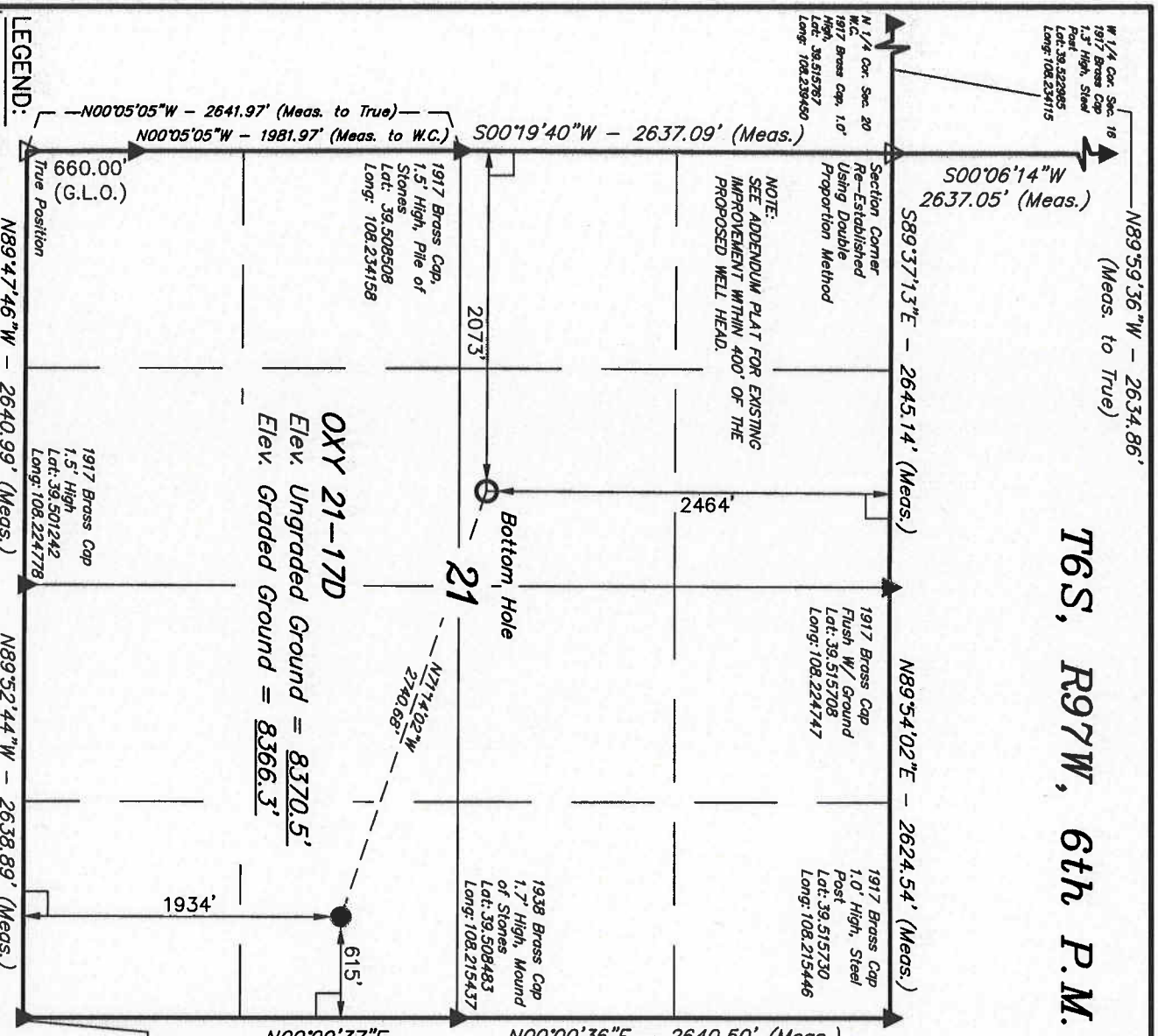
1917 Brass Cap  
2.0' High  
Lat: 39.501236  
Long: 108.213428  
REVISED: 08-18-09 C.H.

REGISTERED LAND SURVEYOR  
REGISTRATION NO. 17892  
STATE OF COLORADO

UNTAR ENGINEERING & LAND SURVEYING  
85 SOUTH 200 EAST - VERNAL, UTAH 84078  
(435) 789-1017

SCALE	DATE SURVEYED:	DATE DRAWN:
1" = 1000'	01-29-07	03-07-08

PARTY	REFERENCES
B.U. B.H. D.R.B.	G.L.O. PLAT
WEATHER	FILE
COLD	BERRY PETROLEUM COMPANY



LEGEND:

- 90° SYMBOL
- PROPOSED WELL HEAD.
- SECTION CORNERS LOCATED.
- SECTION CORNERS RE-ESTABLISHED (NOT SET ON GROUND)

NAD 83 (TARGET BOTTOM HOLE)	NAD 83 (SURFACE LOCATION)
LATITUDE = 39°30'32.24" (39.508956)	LATITUDE = 39°30'23.56" (39.506544)
LONGITUDE = 108°13'36.53" (108.226814)	LONGITUDE = 108°13'03.41" (108.217614)
NAD 27 (TARGET BOTTOM HOLE)	NAD 27 (SURFACE LOCATION)
LATITUDE = 39°30'32.32" (39.508978)	LATITUDE = 39°30'23.64" (39.506567)
LONGITUDE = 108°13'34.23" (108.226174)	LONGITUDE = 108°13'01.12" (108.216978)

T6S, R97W, 6th P.M.

**BERRY PETROLEUM COMPANY**

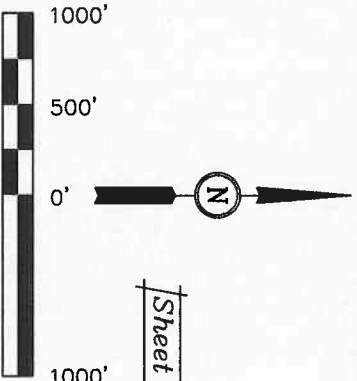
Well location, OXY 21-2D, located as shown in the NE 1/4 SE 1/4 of Section 21, T6S, R97W, 6th P.M., Garfield County, Colorado.

**BASIS OF ELEVATION**

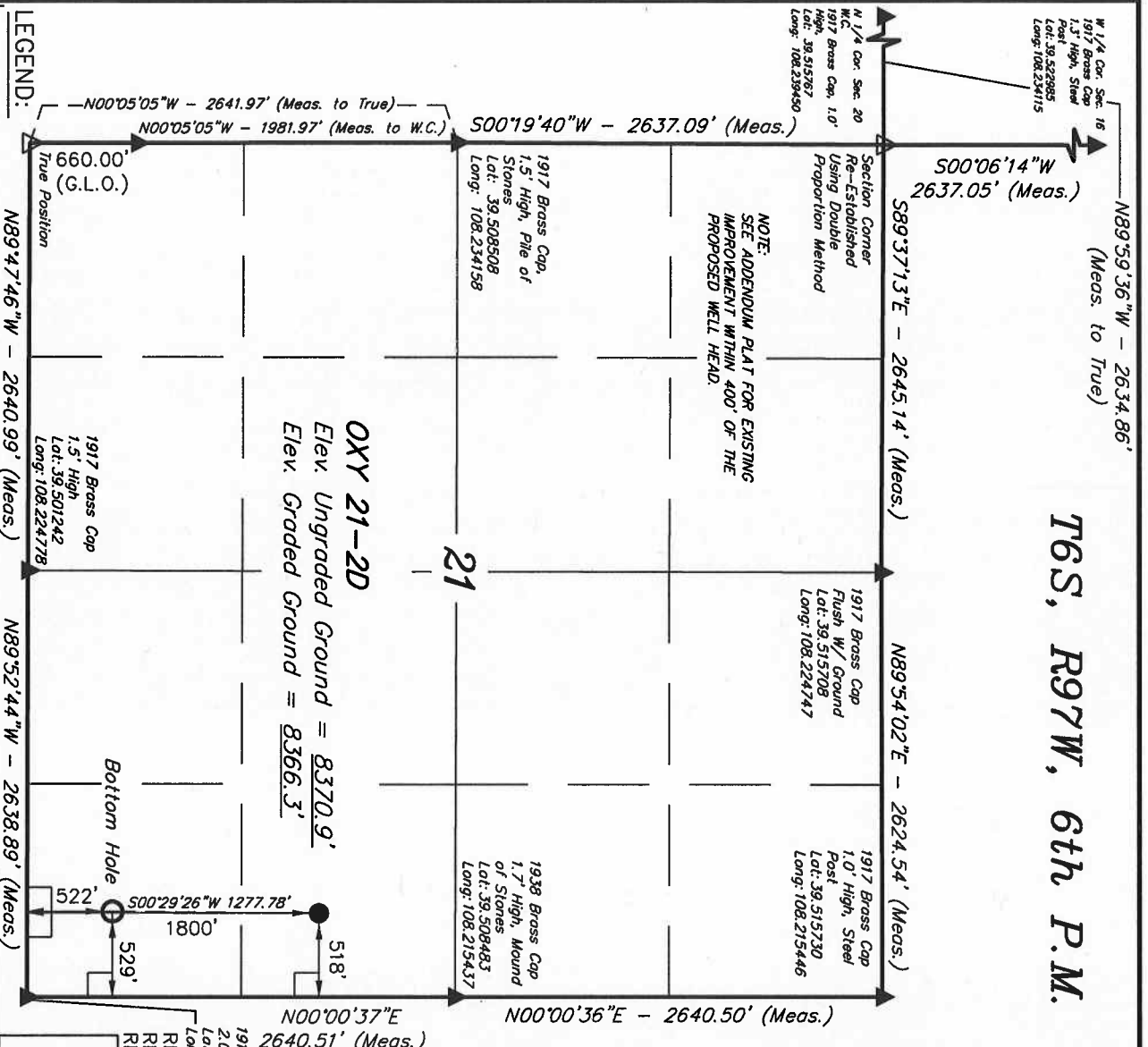
SPOT ELEVATION AT THE NORTHWEST CORNER OF SECTION 30, T5S, R95W, 6th P.M. TAKEN FROM THE FORKED GULCH QUADRANGLE, COLORADO, GARFIELD COUNTY, 7.5 MINUTE SERIES (TOPOGRAPHICAL MAP) PUBLISHED BY THE UNITED STATES DEPARTMENT OF THE INTERIOR, GEOLOGICAL SURVEY. SAID ELEVATION IS MARKED AS BEING 5966 FEET.

**BASIS OF BEARINGS**

BASIS OF BEARINGS IS A G.P.S. OBSERVATION.



Sheet 1b of 12



OXY 21-2D  
Elev. Ungraded Ground = 8370.9'  
Elev. Graded Ground = 8366.3'

THIS IS TO CERTIFY THAT THE ABOVE PLAT WAS PREPARED AND LOCATION AS SHOWN WAS STAKED ON THE GROUND FROM FIELD NOTES OF ACTUAL SURVEY MADE BY ME OR UNDER MY CLOSE SUPERVISION AND THAT THE SAME ARE TRUE AND CORRECT TO THE BEST OF MY KNOWLEDGE AND BELIEF.

1917 Brass Cap  
2.0' High  
Lot: 39.501236  
Long: 108.215428  
REVISED: 10-23-09 C.H.  
REVISED: 09-14-09 C.H.  
REVISED: 08-18-09 C.H.

REGISTERED AND SURVEYOR  
REGISTRATION NO. 12592  
STATE OF COLORADO

**UTAH ENGINEERING & LAND SURVEYING**  
85 SOUTH 200 EAST - VERNAL, UTAH 84078  
(435) 789-1017

- LEGEND:**
- 90° SYMBOL
  - PROPOSED WELL HEAD.
  - SECTION CORNERS LOCATED.
  - SECTION CORNERS RE-ESTABLISHED (NOT SET ON GROUND)

PDOP = 3.7	
NAD 83 (TARGET BOTTOM HOLE)	NAD 83 (SURFACE LOCATION)
LATITUDE = 39°30'09.61" (39.502669)	LATITUDE = 39°30'22.24" (39.506178)
LONGITUDE = 108°13'02.29" (108.217303)	LONGITUDE = 108°13'02.17" (108.217269)
NAD 27 (TARGET BOTTOM HOLE)	NAD 27 (SURFACE LOCATION)
LATITUDE = 39°30'09.69" (39.502692)	LATITUDE = 39°30'22.32" (39.506200)
LONGITUDE = 108°13'00.00" (108.216666)	LONGITUDE = 108°12'59.88" (108.216633)

SCALE 1" = 1000'	
PARTY	DATE SURVEYED: 01-29-07
B.J. B.H. D.R.B.	DATE DRAWN: 03-07-08
WEATHER	REFERENCES
COLD	G.L.O. PLAT
	FILE
	BERRY PETROLEUM COMPANY

T6S, R97W, 6th P.M.

**BERRY PETROLEUM COMPANY**

Well location, OXY 21-6D, located as shown in the NE 1/4 SE 1/4 of Section 21, T6S, R97W, 6th P.M., Garfield County, Colorado.

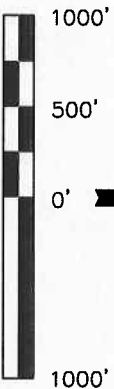
**BASIS OF ELEVATION**

SPOT ELEVATION AT THE NORTHWEST CORNER OF SECTION 30, T5S, R95W, 6th P.M. TAKEN FROM THE FORKED GULCH QUADRANGLE, COLORADO, GARFIELD COUNTY, 7.5 MINUTE SERIES (TOPOGRAPHICAL MAP) PUBLISHED BY THE UNITED STATES DEPARTMENT OF THE INTERIOR, GEOLOGICAL SURVEY. SAID ELEVATION IS MARKED AS BEING 5966 FEET.

**BASIS OF BEARINGS**

BASIS OF BEARINGS IS A G.P.S. OBSERVATION.

Sheet 1f of 12



SCALE

**CERTIFICATE**

THIS IS TO CERTIFY THAT THE ABOVE PLAT WAS PREPARED AND LOCATION AS SHOWN WAS STAKED ON THE GROUND FROM FIELD NOTES OF ACTUAL SURVEYS MADE BY ME OR UNDER MY SUPERVISION AND THAT THE SAME ARE TRUE AND CORRECT TO THE BEST OF MY KNOWLEDGE AND BELIEF.

REVISOR: 10-23-09 C.H.  
REVISED: 09-14-09 C.H.  
REVISED: 08-18-09 C.H.

REGISTERED AND SUPERVISOR  
REGISTRATION NO. 17432  
STATE OF COLORADO

**UNTAN ENGINEERING & LAND SURVEYING**  
85 SOUTH 200 EAST - VERNAL, UTAH 84078  
(435) 789-1017

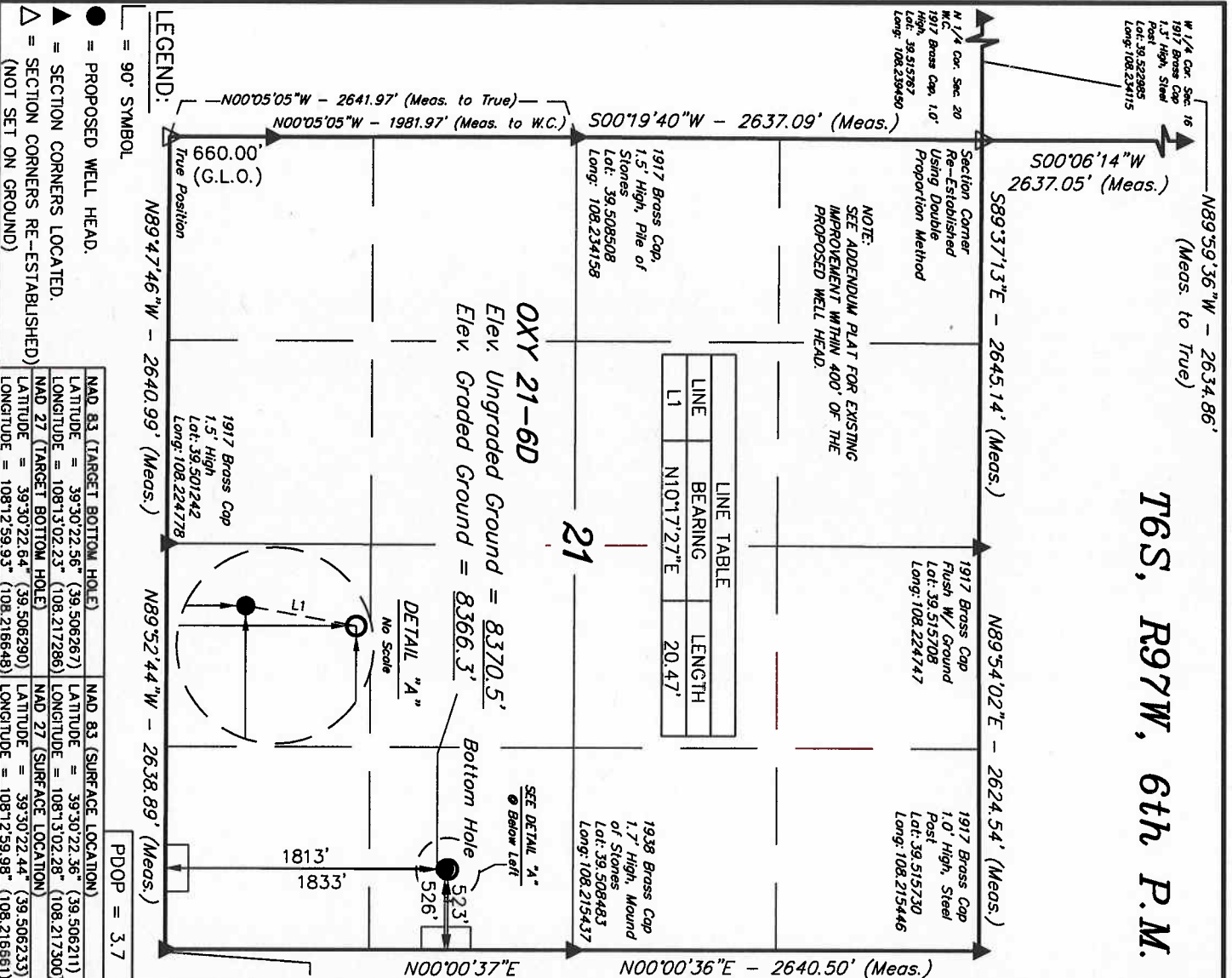
SCALE 1" = 1000'  
DATE SURVEYED: 01-29-07  
DATE DRAWN: 03-07-08

● = PROPOSED WELL HEAD.  
▲ = SECTION CORNERS LOCATED.  
△ = SECTION CORNERS RE-ESTABLISHED (NOT SET ON GROUND)

LEGEND:  
= 90° SYMBOL  
= SECTION CORNERS RE-ESTABLISHED (NOT SET ON GROUND)

NAD 83 (TARGET BOTTOM HOLE) LATITUDE = 39°30'22.56" (39.506267) LONGITUDE = 108°13'02.23" (108.217286)  
NAD 27 (TARGET BOTTOM HOLE) LATITUDE = 39°30'22.64" (39.506290) LONGITUDE = 108°12'59.93" (108.216648)  
NAD 83 (SURFACE LOCATION) LATITUDE = 39°30'22.36" (39.506211) LONGITUDE = 108°13'02.28" (108.217300)  
NAD 27 (SURFACE LOCATION) LATITUDE = 39°30'22.44" (39.506233) LONGITUDE = 108°12'59.98" (108.216561)

PDOP = 3.7



T6S, R97W, 6th P.M.

# BERRY PETROLEUM COMPANY

Well location, OXY 21-7D, located as shown in the NE 1/4 SE 1/4 of Section 21, T6S, R97W, 6th P.M., Garfield County, Colorado.

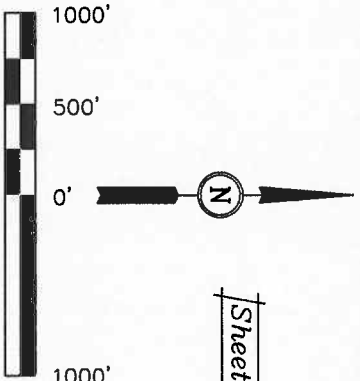
## BASIS OF ELEVATION

SPOT ELEVATION AT THE NORTHWEST CORNER OF SECTION 30, T5S, R95W, 6th P.M. TAKEN FROM THE FORKED GULCH QUADRANGLE, COLORADO, GARFIELD COUNTY, 7.5 MINUTE SERIES (TOPOGRAPHICAL MAP) PUBLISHED BY THE UNITED STATES DEPARTMENT OF THE INTERIOR, GEOLOGICAL SURVEY. SAID ELEVATION IS MARKED AS BEING 5966 FEET.

## BASIS OF BEARINGS

BASIS OF BEARINGS IS A G.P.S. OBSERVATION.

Sheet 1g of 12



## CERTIFICATE

THIS IS TO CERTIFY THAT THE ABOVE PLAT WAS PREPARED AND LOCATION AS SHOWN WAS STAKED ON THE GROUND FROM FIELD NOTES OF ACTUAL SURVEY MADE BY ME OF UNDER THE SUPERVISION AND THAT THE SAME ARE TRUE AND CORRECT TO THE BEST OF MY KNOWLEDGE AND BELIEF.

1917 Brass Cap  
2.0' High  
Lot: 39.501236  
Long: 108.215428  
REGISTERED AND SURVEYOR  
REGISTRATION NO. 12542  
STATE OF COLORADO

## UTAH ENGINEERING & LAND SURVEYING

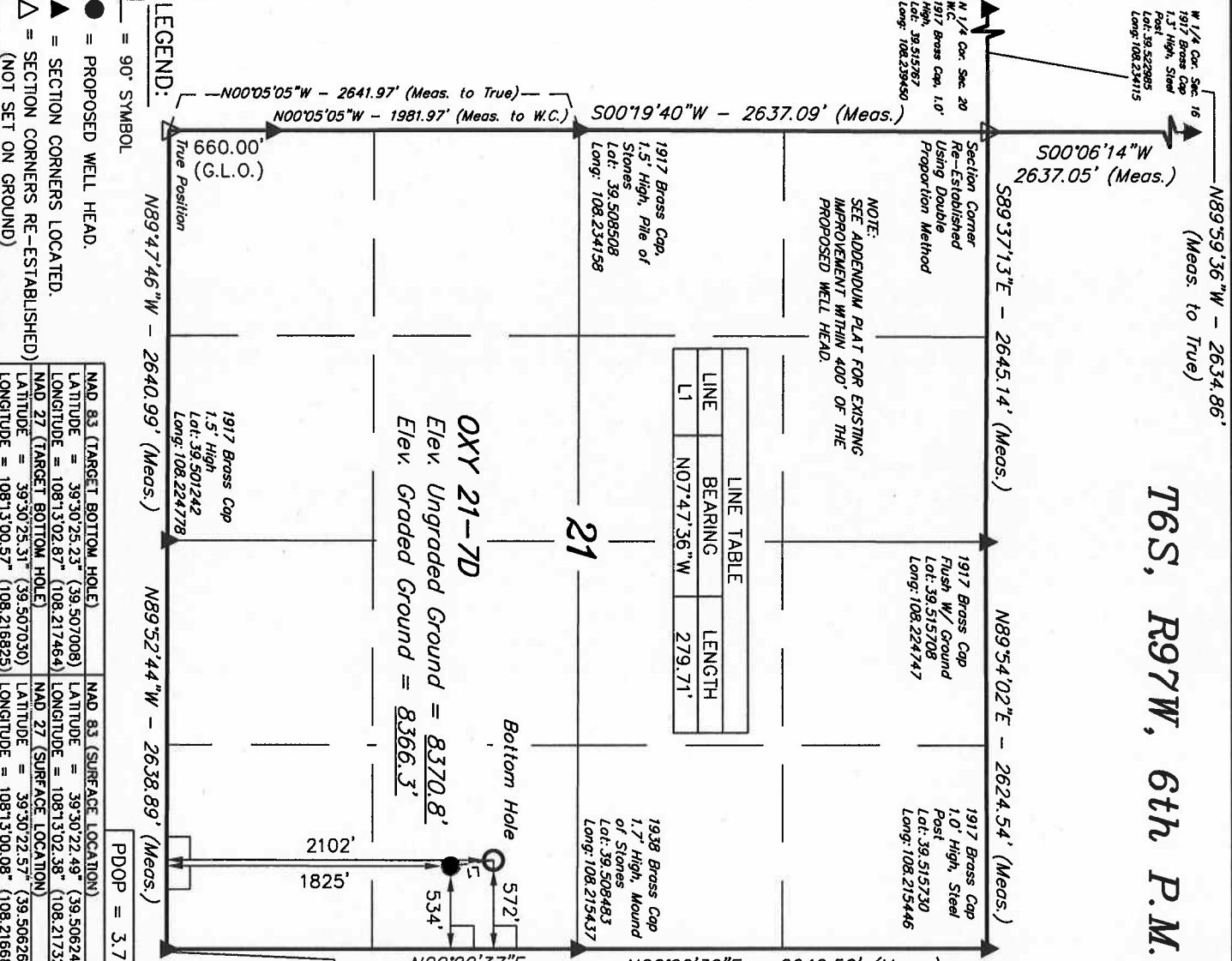
85 SOUTH 200 EAST - VERNAL, UTAH 84078

(435) 789-1017

SCALE 1" = 1000'

DATE SURVEYED: 01-29-07 DATE DRAWN: 03-07-08

PARTY	REFERENCES	FILE
B.J. B.H. D.R.B.	G.L.O. PLAT	BERRY PETROLEUM COMPANY
WEATHER		
COLD		



T6S, R97W, 6th P.M.

# BERRY PETROLEUM COMPANY

Well location, OXY 21-8D, located as shown in the NE 1/4 SE 1/4 of Section 21, T6S, R97W, 6th P.M., Garfield County, Colorado.

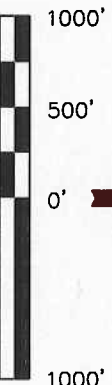
## BASIS OF ELEVATION

SPOT ELEVATION AT THE NORTHWEST CORNER OF SECTION 30, T5S, R95W, 6th P.M. TAKEN FROM THE FORKED GULCH QUADRANGLE, COLORADO, GARFIELD COUNTY, 7.5 MINUTE SERIES (TOPOGRAPHICAL MAP) PUBLISHED BY THE UNITED STATES DEPARTMENT OF THE INTERIOR, GEOLOGICAL SURVEY. SAID ELEVATION IS MARKED AS BEING 5966 FEET.

## BASIS OF BEARINGS

BASIS OF BEARINGS IS A G.P.S. OBSERVATION.

Sheet 1h of 12



## CERTIFICATE

THIS IS TO CERTIFY THAT THE ABOVE PLAT WAS PREPARED AND LOCATED AS SHOWN WAS STAKED ON THE GROUND FROM FIELD NOTES OF ACTUAL SURVEYS MADE BY ME OR UNDER MY SUPERVISION AND THAT THE SAME ARE TRUE AND CORRECT TO THE BEST OF MY KNOWLEDGE AND BELIEF.

1917 Brass Cap  
2.0' High  
Lot: 39.501236  
Long: 108.215428

REVISED: 09-14-09 C.H.  
REVISED: 08-18-09 C.H.

REGISTERED AND SURVEYOR  
REGISTRATION NO. 17492  
STATE OF COLORADO

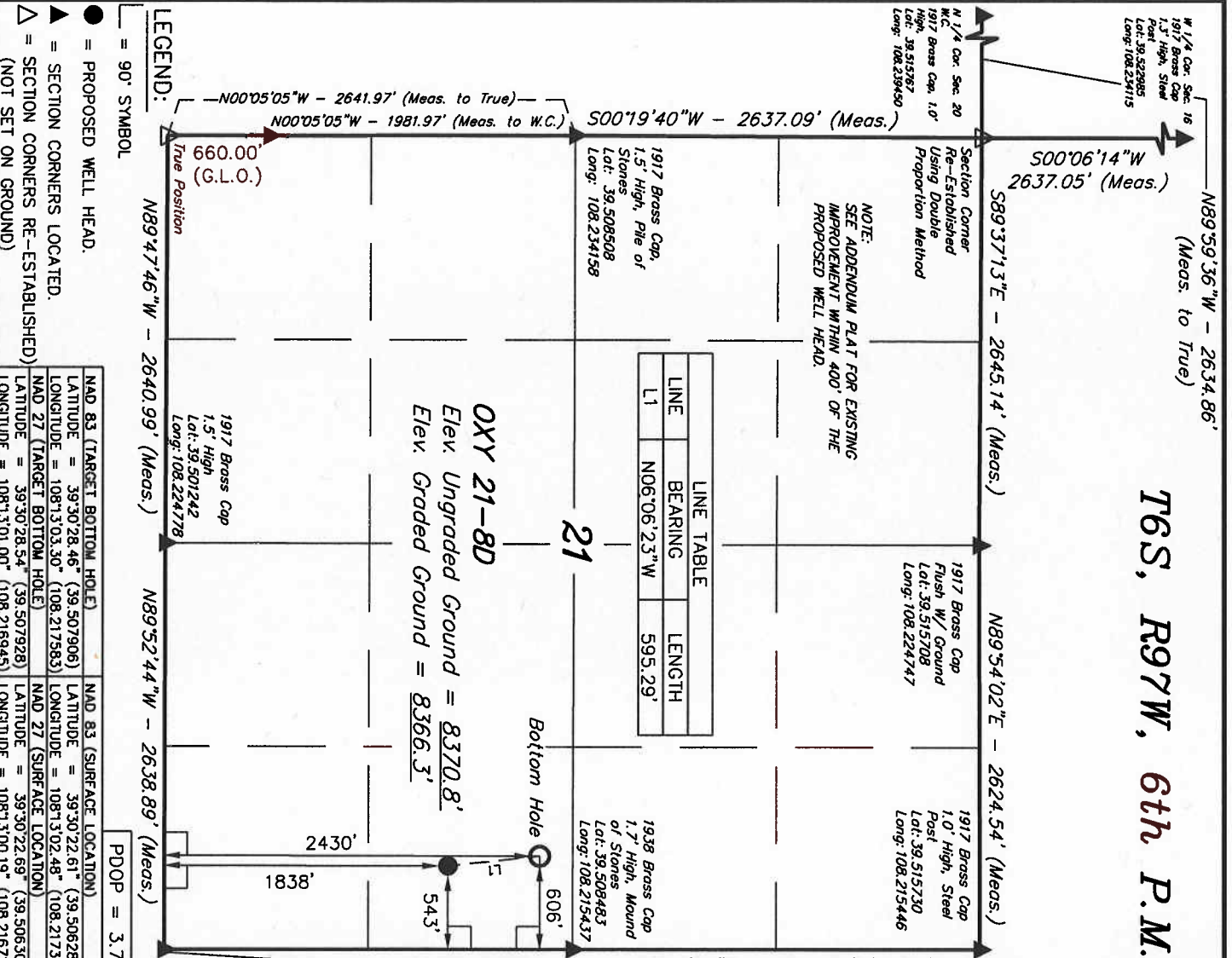
## UNTAH ENGINEERING & LAND SURVEYING

85 SOUTH 200 EAST - VERNAL, UTAH 84078

(435) 789-1017

SCALE 1" = 1000' DATE SURVEYED: 01-29-07 DATE DRAWN: 03-07-08

PARTY	REFERENCES
B.J. B.H. D.R.B.	G.L.O. PLAT
WEATHER COLD	FILE
	BERRY PETROLEUM COMPANY



LINE	BEARING	LENGTH
L1	N06°06'23"W	595.29'

LEGEND:  
= 90° SYMBOL  
● = PROPOSED WELL HEAD.  
▲ = SECTION CORNERS LOCATED.  
△ = SECTION CORNERS RE-ESTABLISHED (NOT SET ON GROUND)

NAD 83 (TARGET BOTTOM HOLE)	NAD 83 (SURFACE LOCATION)
LATITUDE = 39°30'28.46" (39.507906)	LATITUDE = 39°30'22.61" (39.506281)
LONGITUDE = 108°13'03.30" (108.217583)	LONGITUDE = 108°13'02.48" (108.217356)
NAD 27 (TARGET BOTTOM HOLE)	NAD 27 (SURFACE LOCATION)
LATITUDE = 39°30'28.54" (39.507928)	LATITUDE = 39°30'22.69" (39.506303)
LONGITUDE = 108°13'01.00" (108.216945)	LONGITUDE = 108°13'00.19" (108.216719)

N89°59'36"W - 2634.86'  
(Meas. to True)

T6S, R97W, 6th P.M.

**BERRY PETROLEUM COMPANY**

Well location, OXY 21-16D, located as shown in the NE 1/4 SE 1/4 of Section 21, T6S, R97W, 6th P.M., Garfield County, Colorado.

**BASIS OF ELEVATION**

SPOT ELEVATION AT THE NORTHWEST CORNER OF SECTION 30, T5S, R95W, 6th P.M. TAKEN FROM THE FORKED GULCH QUADRANGLE, COLORADO, GARFIELD COUNTY, 7.5 MINUTE SERIES (TOPOGRAPHICAL MAP) PUBLISHED BY THE UNITED STATES DEPARTMENT OF THE INTERIOR, GEOLOGICAL SURVEY. SAID ELEVATION IS MARKED AS BEING 5966 FEET.

**BASIS OF BEARINGS**

BASIS OF BEARINGS IS A G.P.S. OBSERVATION.

Sheet 1p of 12



SCALE

**CERTIFICATE**

THIS IS TO CERTIFY THAT THE ABOVE PLAT WAS PREPARED AND LOCATION AS SHOWN WAS STAKED ON THE GROUND FROM FIELD NOTES OF ACTUAL SURVEYS MADE BY ME OR UNDER MY SUPERVISION AND THAT THE SAME ARE TRUE AND CORRECT TO THE BEST OF MY KNOWLEDGE AND BELIEF.

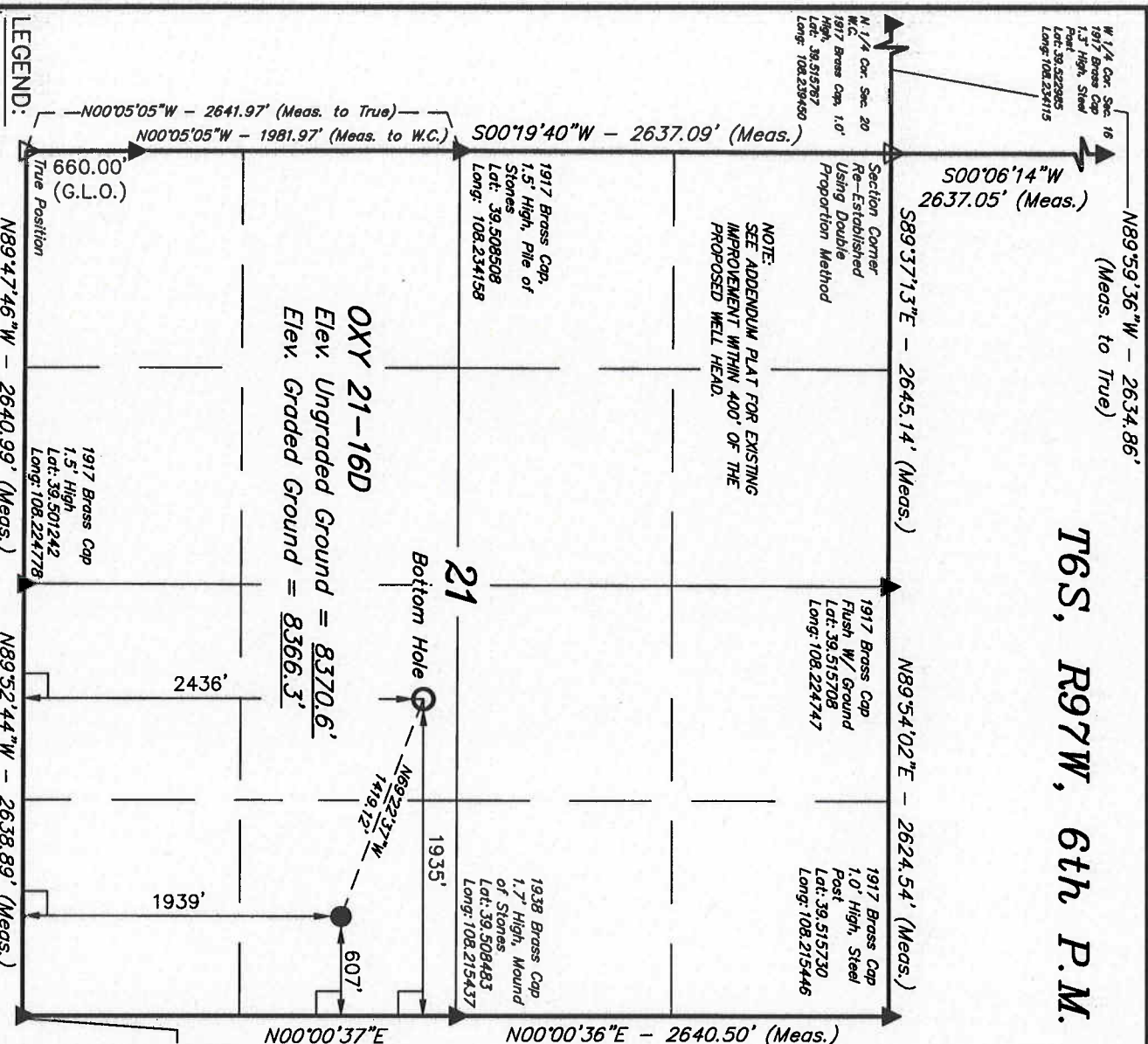
REVISED: 09-14-09 C.H.  
REVISED: 08-18-09 C.H.

REGISTERED AND SUPERVISOR  
REGISTRATION NO. 17292  
STATE OF COLORADO

**UNTAR ENGINEERING & LAND SURVEYING**  
85 SOUTH 200 EAST - VERNAL, UTAH 84078  
(435) 789-1017

SCALE	DATE SURVEYED:	DATE DRAWN:
1" = 1000'	01-29-07	03-07-08

PARTY	REFERENCES
B.J. B.H. D.R.B.	G.L.O. PLAT
WEATHER	FILE
COLD	BERRY PETROLEUM COMPANY



**LEGEND:**

- = PROPOSED WELL HEAD.
- ▲ = SECTION CORNERS LOCATED.
- △ = SECTION CORNERS RE-ESTABLISHED (NOT SET ON GROUND)

NAD 83 (TARGET BOTTOM HOLE)	NAD 83 (SURFACE LOCATION)
LATITUDE = 39°30'28.54" (39.507928)	LATITUDE = 39°30'23.61" (39.506558)
LONGITUDE = 108°13'20.25" (108.222292)	LONGITUDE = 108°13'03.31" (108.217586)
NAD 27 (TARGET BOTTOM HOLE)	NAD 27 (SURFACE LOCATION)
LATITUDE = 39°30'28.62" (39.507949)	LATITUDE = 39°30'23.69" (39.506581)
LONGITUDE = 108°13'17.96" (108.221655)	LONGITUDE = 108°13'01.01" (108.216947)