

BERRY PETROLEUM COMPANY
WELL PAD I21 697

LOCATED IN GARFIELD COUNTY, COLORADO
SECTION 21, T6S, R97W, 6th P.M.
NE 1/4 SE 1/4



PHOTO: REFERENCE AREA VIEW

CAMERA ANGLE: NORTHERLY

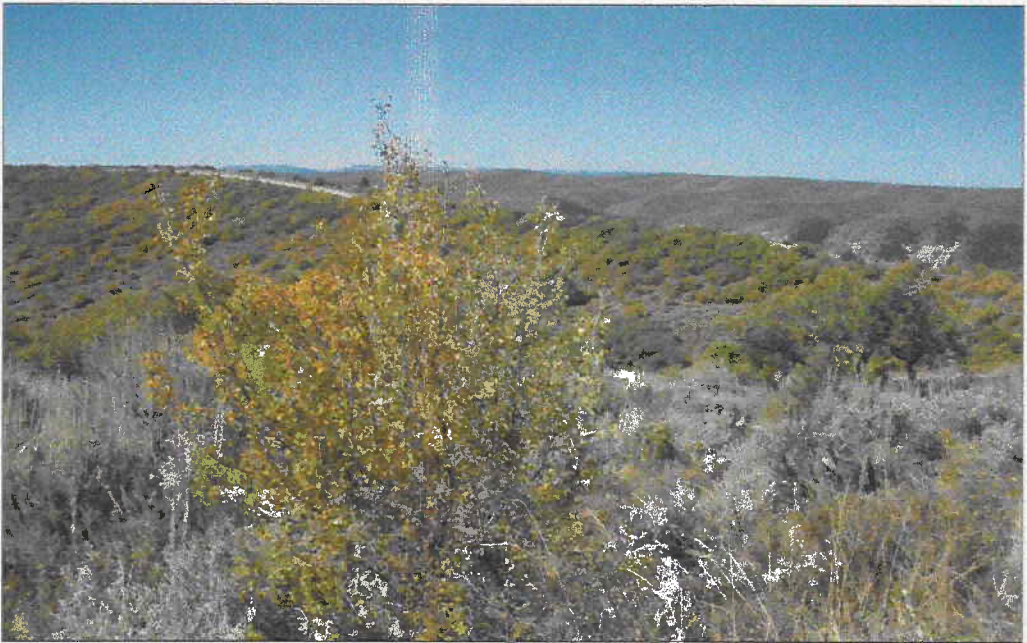


PHOTO: REFERENCE AREA VIEW

CAMERA ANGLE: SOUTHERLY



- Since 1964 -

UELS

Uintah Engineering & Land Surveying
85 South 200 East Vernal, Utah 84078
(435) 789-1017 * FAX (435) 789-1813

LOCATION PHOTOS

9 28 09
MONTH DAY YEAR

PHOTO

P4

TAKEN BY: B.J.

DRAWN BY: J.L.G.

REVISED: 10-1-09

BERRY PETROLEUM COMPANY
WELL PAD I21 697

LOCATED IN GARFIELD COUNTY, COLORADO
SECTION 21, T6S, R97W, 6th P.M.
NE 1/4 SE 1/4



PHOTO: REFERENCE AREA VIEW

CAMERAANGLE: EASTERLY

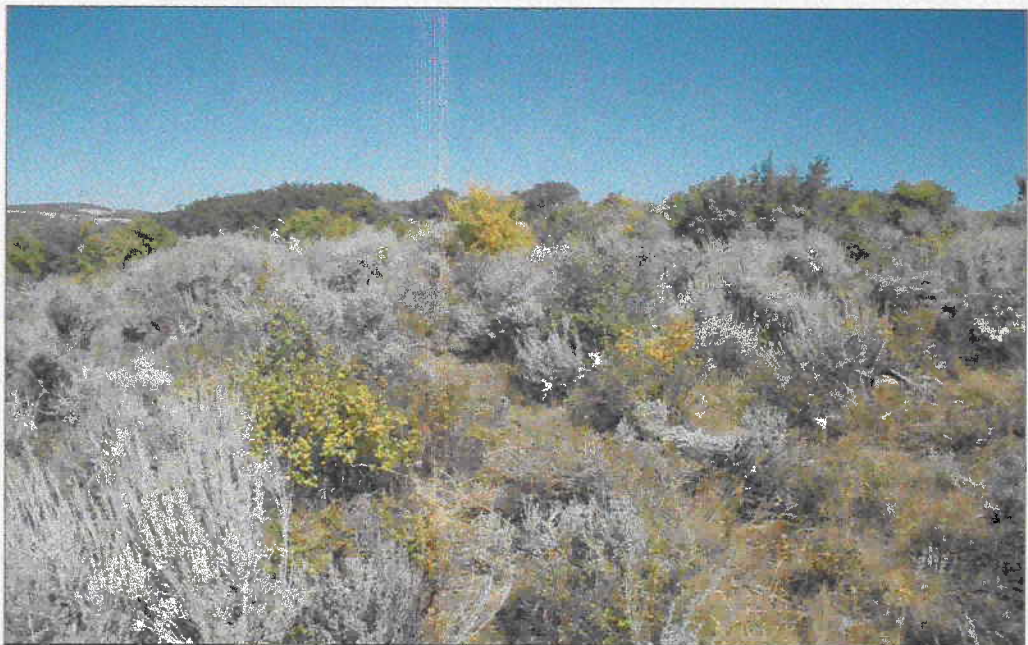


PHOTO: REFERENCE AREA VIEW

CAMERAANGLE: WESTERLY



U **E** **L** **S** **U**intah Engineering & Land Surveying
85 South 200 East Vernal, Utah 84078
(435) 789-1017 * FAX (435) 789-1813

LOCATION PHOTOS			9	28	09	PHOTO P5
			MONTH	DAY	YEAR	
TAKEN BY: B.J.		DRAWN BY: J.L.G.		REVISED: 10-1-09		