



## **Denver Division- Colorado**

**DJ - Hereford Ranch  
Randall Creek 01-28H  
Randall Creek 1-28H**

**Original Wellbore**

**Plan: APD**

## **Standard Planning Report**

**10 February, 2010**

<b>Database:</b>	EDM 2003.21 Single User Db	<b>Local Co-ordinate Reference:</b>	Well Randall Creek 1-28H
<b>Company:</b>	Denver Division- Colorado	<b>TVD Reference:</b>	RIG @ 5312.0ft (TBD)
<b>Project:</b>	DJ - Hereford Ranch	<b>MD Reference:</b>	RIG @ 5312.0ft (TBD)
<b>Site:</b>	Randall Creek 01-28H	<b>North Reference:</b>	True
<b>Well:</b>	Randall Creek 1-28H	<b>Survey Calculation Method:</b>	Minimum Curvature
<b>Wellbore:</b>	Original Wellbore		
<b>Design:</b>	APD		

<b>Project</b>	DJ - Hereford Ranch, Weld County		
<b>Map System:</b>	US State Plane 1927 (Exact solution)	<b>System Datum:</b>	Mean Sea Level
<b>Geo Datum:</b>	NAD 1927 (NADCON CONUS)		
<b>Map Zone:</b>	Colorado North 501		

Site	Randall Creek 01-28H				
Site Position:		Northing:	599,949.71 ft	Latitude:	40° 58' 27.502 N
From:	Lat/Long	Easting:	2,325,636.17 ft	Longitude:	104° 19' 14.880 W
Position Uncertainty:	0.0 ft	Slot Radius:	"	Grid Convergence:	0.76 °

Well	Randall Creek 1-28H					
Well Position	+N/-S	0.0 ft	Northing:	599,949.71 ft	Latitude:	40° 58' 27.502 N
	+E/-W	0.0 ft	Easting:	2,325,636.17 ft	Longitude:	104° 19' 14.880 W
Position Uncertainty		0.0 ft	Wellhead Elevation:	ft	Ground Level:	5,287.0 ft

<b>Wellbore</b>	Original Wellbore				
<b>Magnetics</b>	<b>Model Name</b>	<b>Sample Date</b>	<b>Declination (°)</b>	<b>Dip Angle (°)</b>	<b>Field Strength (nT)</b>
	IGRF200510	2/5/2010	8.82	67.64	53,635

<b>Design</b>	APD			
<b>Audit Notes:</b>				
<b>Version:</b>	<b>Phase:</b>	PROTOTYPE	<b>Tie On Depth:</b>	0.0
<b>Vertical Section:</b>	<b>Depth From (TVD)</b>	<b>+N/-S</b>	<b>+E/-W</b>	<b>Direction</b>
	(ft)	(ft)	(ft)	(°)
	0.0	0.0	0.0	326.91

<b>Plan Sections</b>										
Measured Depth (ft)	Inclination (°)	Azimuth (°)	Vertical Depth (ft)	+N/-S (ft)	+E/-W (ft)	Dogleg Rate (°/100ft)	Build Rate (°/100ft)	Turn Rate (°/100ft)	TFO (°)	Target
0.0	0.00	0.00	0.0	0.0	0.0	0.00	0.00	0.00	0.00	
6,730.5	0.00	0.00	6,730.5	0.0	0.0	0.00	0.00	0.00	0.00	
7,480.5	90.00	348.69	7,208.0	468.2	-93.6	12.00	12.00	0.00	348.69	
8,532.8	90.00	348.69	7,208.0	1,500.0	-300.0	0.00	0.00	0.00	0.00	Randall Creek 1-28H
9,042.8	90.00	333.39	7,208.0	1,980.9	-465.2	3.00	0.00	-3.00	-90.00	Randall Creek 1-28H
10,077.4	90.00	333.39	7,208.0	2,905.9	-928.6	0.00	0.00	0.00	0.00	Randall Creek 1-28H
11,130.9	90.00	301.79	7,208.0	3,673.9	-1,630.2	3.00	0.00	-3.00	-90.00	Randall Creek 1-28H
12,639.0	90.00	301.79	7,208.0	4,468.3	-2,912.1	0.00	0.00	0.00	0.00	Randall Creek 1-28H

<b>Database:</b>	EDM 2003.21 Single User Db	<b>Local Co-ordinate Reference:</b>	Well Randall Creek 1-28H
<b>Company:</b>	Denver Division- Colorado	<b>TVD Reference:</b>	RIG @ 5312.0ft (TBD)
<b>Project:</b>	DJ - Hereford Ranch	<b>MD Reference:</b>	RIG @ 5312.0ft (TBD)
<b>Site:</b>	Randall Creek 01-28H	<b>North Reference:</b>	True
<b>Well:</b>	Randall Creek 1-28H	<b>Survey Calculation Method:</b>	Minimum Curvature
<b>Wellbore:</b>	Original Wellbore		
<b>Design:</b>	APD		

Planned Survey									
Measured Depth (ft)	Inclination (°)	Azimuth (°)	Vertical Depth (ft)	+N/-S (ft)	+E/-W (ft)	Vertical Section (ft)	Dogleg Rate (°/100ft)	Build Rate (°/100ft)	Turn Rate (°/100ft)
0.0	0.00	0.00	0.0	0.0	0.0	0.0	0.00	0.00	0.00
100.0	0.00	0.00	100.0	0.0	0.0	0.0	0.00	0.00	0.00
200.0	0.00	0.00	200.0	0.0	0.0	0.0	0.00	0.00	0.00
300.0	0.00	0.00	300.0	0.0	0.0	0.0	0.00	0.00	0.00
400.0	0.00	0.00	400.0	0.0	0.0	0.0	0.00	0.00	0.00
500.0	0.00	0.00	500.0	0.0	0.0	0.0	0.00	0.00	0.00
600.0	0.00	0.00	600.0	0.0	0.0	0.0	0.00	0.00	0.00
700.0	0.00	0.00	700.0	0.0	0.0	0.0	0.00	0.00	0.00
800.0	0.00	0.00	800.0	0.0	0.0	0.0	0.00	0.00	0.00
900.0	0.00	0.00	900.0	0.0	0.0	0.0	0.00	0.00	0.00
1,000.0	0.00	0.00	1,000.0	0.0	0.0	0.0	0.00	0.00	0.00
1,100.0	0.00	0.00	1,100.0	0.0	0.0	0.0	0.00	0.00	0.00
1,200.0	0.00	0.00	1,200.0	0.0	0.0	0.0	0.00	0.00	0.00
1,300.0	0.00	0.00	1,300.0	0.0	0.0	0.0	0.00	0.00	0.00
1,350.0	0.00	0.00	1,350.0	0.0	0.0	0.0	0.00	0.00	0.00
9 5/8"									
1,400.0	0.00	0.00	1,400.0	0.0	0.0	0.0	0.00	0.00	0.00
1,500.0	0.00	0.00	1,500.0	0.0	0.0	0.0	0.00	0.00	0.00
1,600.0	0.00	0.00	1,600.0	0.0	0.0	0.0	0.00	0.00	0.00
1,700.0	0.00	0.00	1,700.0	0.0	0.0	0.0	0.00	0.00	0.00
1,800.0	0.00	0.00	1,800.0	0.0	0.0	0.0	0.00	0.00	0.00
1,900.0	0.00	0.00	1,900.0	0.0	0.0	0.0	0.00	0.00	0.00
2,000.0	0.00	0.00	2,000.0	0.0	0.0	0.0	0.00	0.00	0.00
2,100.0	0.00	0.00	2,100.0	0.0	0.0	0.0	0.00	0.00	0.00
2,200.0	0.00	0.00	2,200.0	0.0	0.0	0.0	0.00	0.00	0.00
2,300.0	0.00	0.00	2,300.0	0.0	0.0	0.0	0.00	0.00	0.00
2,400.0	0.00	0.00	2,400.0	0.0	0.0	0.0	0.00	0.00	0.00
2,500.0	0.00	0.00	2,500.0	0.0	0.0	0.0	0.00	0.00	0.00
2,600.0	0.00	0.00	2,600.0	0.0	0.0	0.0	0.00	0.00	0.00
2,700.0	0.00	0.00	2,700.0	0.0	0.0	0.0	0.00	0.00	0.00
2,800.0	0.00	0.00	2,800.0	0.0	0.0	0.0	0.00	0.00	0.00
2,900.0	0.00	0.00	2,900.0	0.0	0.0	0.0	0.00	0.00	0.00
3,000.0	0.00	0.00	3,000.0	0.0	0.0	0.0	0.00	0.00	0.00
3,100.0	0.00	0.00	3,100.0	0.0	0.0	0.0	0.00	0.00	0.00
3,200.0	0.00	0.00	3,200.0	0.0	0.0	0.0	0.00	0.00	0.00
3,300.0	0.00	0.00	3,300.0	0.0	0.0	0.0	0.00	0.00	0.00
3,400.0	0.00	0.00	3,400.0	0.0	0.0	0.0	0.00	0.00	0.00
3,500.0	0.00	0.00	3,500.0	0.0	0.0	0.0	0.00	0.00	0.00
3,600.0	0.00	0.00	3,600.0	0.0	0.0	0.0	0.00	0.00	0.00
3,700.0	0.00	0.00	3,700.0	0.0	0.0	0.0	0.00	0.00	0.00
3,800.0	0.00	0.00	3,800.0	0.0	0.0	0.0	0.00	0.00	0.00
3,900.0	0.00	0.00	3,900.0	0.0	0.0	0.0	0.00	0.00	0.00
4,000.0	0.00	0.00	4,000.0	0.0	0.0	0.0	0.00	0.00	0.00
4,100.0	0.00	0.00	4,100.0	0.0	0.0	0.0	0.00	0.00	0.00
4,200.0	0.00	0.00	4,200.0	0.0	0.0	0.0	0.00	0.00	0.00
4,300.0	0.00	0.00	4,300.0	0.0	0.0	0.0	0.00	0.00	0.00
4,400.0	0.00	0.00	4,400.0	0.0	0.0	0.0	0.00	0.00	0.00
4,500.0	0.00	0.00	4,500.0	0.0	0.0	0.0	0.00	0.00	0.00
4,600.0	0.00	0.00	4,600.0	0.0	0.0	0.0	0.00	0.00	0.00
4,700.0	0.00	0.00	4,700.0	0.0	0.0	0.0	0.00	0.00	0.00
4,800.0	0.00	0.00	4,800.0	0.0	0.0	0.0	0.00	0.00	0.00
4,900.0	0.00	0.00	4,900.0	0.0	0.0	0.0	0.00	0.00	0.00
5,000.0	0.00	0.00	5,000.0	0.0	0.0	0.0	0.00	0.00	0.00
5,100.0	0.00	0.00	5,100.0	0.0	0.0	0.0	0.00	0.00	0.00

<b>Database:</b>	EDM 2003.21 Single User Db	<b>Local Co-ordinate Reference:</b>	Well Randall Creek 1-28H
<b>Company:</b>	Denver Division- Colorado	<b>TVD Reference:</b>	RIG @ 5312.0ft (TBD)
<b>Project:</b>	DJ - Hereford Ranch	<b>MD Reference:</b>	RIG @ 5312.0ft (TBD)
<b>Site:</b>	Randall Creek 01-28H	<b>North Reference:</b>	True
<b>Well:</b>	Randall Creek 1-28H	<b>Survey Calculation Method:</b>	Minimum Curvature
<b>Wellbore:</b>	Original Wellbore		
<b>Design:</b>	APD		

Planned Survey									
Measured Depth (ft)	Inclination (°)	Azimuth (°)	Vertical Depth (ft)	+N/-S (ft)	+E/-W (ft)	Vertical Section (ft)	Dogleg Rate (°/100ft)	Build Rate (°/100ft)	Turn Rate (°/100ft)
5,200.0	0.00	0.00	5,200.0	0.0	0.0	0.0	0.00	0.00	0.00
5,300.0	0.00	0.00	5,300.0	0.0	0.0	0.0	0.00	0.00	0.00
5,400.0	0.00	0.00	5,400.0	0.0	0.0	0.0	0.00	0.00	0.00
5,500.0	0.00	0.00	5,500.0	0.0	0.0	0.0	0.00	0.00	0.00
5,600.0	0.00	0.00	5,600.0	0.0	0.0	0.0	0.00	0.00	0.00
5,700.0	0.00	0.00	5,700.0	0.0	0.0	0.0	0.00	0.00	0.00
5,800.0	0.00	0.00	5,800.0	0.0	0.0	0.0	0.00	0.00	0.00
5,900.0	0.00	0.00	5,900.0	0.0	0.0	0.0	0.00	0.00	0.00
6,000.0	0.00	0.00	6,000.0	0.0	0.0	0.0	0.00	0.00	0.00
6,100.0	0.00	0.00	6,100.0	0.0	0.0	0.0	0.00	0.00	0.00
6,200.0	0.00	0.00	6,200.0	0.0	0.0	0.0	0.00	0.00	0.00
6,300.0	0.00	0.00	6,300.0	0.0	0.0	0.0	0.00	0.00	0.00
6,400.0	0.00	0.00	6,400.0	0.0	0.0	0.0	0.00	0.00	0.00
6,500.0	0.00	0.00	6,500.0	0.0	0.0	0.0	0.00	0.00	0.00
6,600.0	0.00	0.00	6,600.0	0.0	0.0	0.0	0.00	0.00	0.00
6,700.0	0.00	0.00	6,700.0	0.0	0.0	0.0	0.00	0.00	0.00
6,730.5	0.00	0.00	6,730.5	0.0	0.0	0.0	0.00	0.00	0.00
6,800.0	8.34	348.69	6,799.8	4.9	-1.0	4.7	12.00	12.00	0.00
6,900.0	20.34	348.69	6,896.5	29.2	-5.8	27.6	12.00	12.00	0.00
7,000.0	32.34	348.69	6,985.9	72.6	-14.5	68.8	12.00	12.00	0.00
7,100.0	44.34	348.69	7,064.2	133.3	-26.7	126.2	12.00	12.00	0.00
7,200.0	56.34	348.69	7,127.9	208.7	-41.7	197.6	12.00	12.00	0.00
7,300.0	68.34	348.69	7,174.3	295.4	-59.1	279.7	12.00	12.00	0.00
7,400.0	80.34	348.69	7,201.2	389.6	-77.9	368.9	12.00	12.00	0.00
7,480.5	90.00	348.69	7,208.0	468.2	-93.6	443.3	12.00	12.00	0.00
7"									
7,500.0	90.00	348.69	7,208.0	487.3	-97.5	461.4	0.02	0.02	0.00
7,600.0	90.00	348.69	7,208.0	585.3	-117.1	554.3	0.00	0.00	0.00
7,700.0	90.00	348.69	7,208.0	683.4	-136.7	647.2	0.00	0.00	0.00
7,800.0	90.00	348.69	7,208.0	781.5	-156.3	740.0	0.00	0.00	0.00
7,900.0	90.00	348.69	7,208.0	879.5	-175.9	832.9	0.00	0.00	0.00
8,000.0	90.00	348.69	7,208.0	977.6	-195.5	925.7	0.00	0.00	0.00
8,100.0	90.00	348.69	7,208.0	1,075.6	-215.1	1,018.6	0.00	0.00	0.00
8,200.0	90.00	348.69	7,208.0	1,173.7	-234.7	1,111.5	0.00	0.00	0.00
8,300.0	90.00	348.69	7,208.0	1,271.7	-254.3	1,204.3	0.00	0.00	0.00
8,400.0	90.00	348.69	7,208.0	1,369.8	-274.0	1,297.2	0.00	0.00	0.00
8,500.0	90.00	348.69	7,208.0	1,467.9	-293.6	1,390.0	0.00	0.00	0.00
8,532.8	90.00	348.69	7,208.0	1,500.0	-300.0	1,420.5	0.00	0.00	0.00
Randall Creek 1-28H (Drig Target)									
8,600.0	90.00	346.67	7,208.0	1,565.7	-314.3	1,483.3	3.00	0.00	-3.00
8,700.0	90.00	343.67	7,208.0	1,662.3	-339.9	1,578.3	3.00	0.00	-3.00
8,800.0	90.00	340.67	7,208.0	1,757.5	-370.5	1,674.7	3.00	0.00	-3.00
8,900.0	90.00	337.67	7,208.0	1,851.0	-406.1	1,772.4	3.00	0.00	-3.00
9,000.0	90.00	334.67	7,208.0	1,942.4	-446.5	1,871.1	3.00	0.00	-3.00
9,042.8	90.00	333.39	7,208.0	1,980.9	-465.2	1,913.6	3.00	0.00	-3.00
9,100.0	90.00	333.39	7,208.0	2,032.1	-490.8	1,970.4	0.00	0.00	0.00
9,200.0	90.00	333.39	7,208.0	2,121.5	-535.6	2,069.8	0.00	0.00	0.00
9,300.0	90.00	333.39	7,208.0	2,210.9	-580.4	2,169.1	0.00	0.00	0.00
9,400.0	90.00	333.39	7,208.0	2,300.3	-625.2	2,268.5	0.00	0.00	0.00
9,500.0	90.00	333.39	7,208.0	2,389.7	-670.0	2,367.9	0.00	0.00	0.00
9,600.0	90.00	333.39	7,208.0	2,479.1	-714.8	2,467.2	0.00	0.00	0.00
9,700.0	90.00	333.39	7,208.0	2,568.5	-759.6	2,566.6	0.00	0.00	0.00
9,800.0	90.00	333.39	7,208.0	2,657.9	-804.4	2,665.9	0.00	0.00	0.00
9,900.0	90.00	333.39	7,208.0	2,747.3	-849.2	2,765.3	0.00	0.00	0.00

<b>Database:</b>	EDM 2003.21 Single User Db	<b>Local Co-ordinate Reference:</b>	Well Randall Creek 1-28H
<b>Company:</b>	Denver Division- Colorado	<b>TVD Reference:</b>	RIG @ 5312.0ft (TBD)
<b>Project:</b>	DJ - Hereford Ranch	<b>MD Reference:</b>	RIG @ 5312.0ft (TBD)
<b>Site:</b>	Randall Creek 01-28H	<b>North Reference:</b>	True
<b>Well:</b>	Randall Creek 1-28H	<b>Survey Calculation Method:</b>	Minimum Curvature
<b>Wellbore:</b>	Original Wellbore		
<b>Design:</b>	APD		

Planned Survey									
Measured Depth (ft)	Inclination (°)	Azimuth (°)	Vertical Depth (ft)	+N/-S (ft)	+E/-W (ft)	Vertical Section (ft)	Dogleg Rate (°/100ft)	Build Rate (°/100ft)	Turn Rate (°/100ft)
10,000.0	90.00	333.39	7,208.0	2,836.7	-894.0	2,864.7	0.00	0.00	0.00
10,077.4	90.00	333.39	7,208.0	2,905.9	-928.6	2,941.5	0.00	0.00	0.00
Randall Creek 1-28H (Target 1)									
10,100.0	90.00	332.71	7,208.0	2,926.1	-938.9	2,964.0	3.00	0.00	-3.00
10,200.0	90.00	329.71	7,208.0	3,013.7	-987.0	3,063.7	3.00	0.00	-3.00
10,300.0	90.00	326.71	7,208.0	3,098.7	-1,039.7	3,163.7	3.00	0.00	-3.00
10,400.0	90.00	323.71	7,208.0	3,180.8	-1,096.7	3,263.7	3.00	0.00	-3.00
10,500.0	90.00	320.71	7,208.0	3,259.8	-1,158.0	3,363.3	3.00	0.00	-3.00
10,600.0	90.00	317.71	7,208.0	3,335.5	-1,223.3	3,462.4	3.00	0.00	-3.00
10,700.0	90.00	314.71	7,208.0	3,407.7	-1,292.5	3,560.6	3.00	0.00	-3.00
10,800.0	90.00	311.71	7,208.0	3,476.2	-1,365.4	3,657.8	3.00	0.00	-3.00
10,900.0	90.00	308.71	7,208.0	3,540.7	-1,441.8	3,753.6	3.00	0.00	-3.00
11,000.0	90.00	305.71	7,208.0	3,601.2	-1,521.4	3,847.7	3.00	0.00	-3.00
11,100.0	90.00	302.71	7,208.0	3,657.4	-1,604.1	3,940.0	3.00	0.00	-3.00
11,130.9	90.00	301.79	7,208.0	3,673.9	-1,630.2	3,968.0	3.00	0.00	-3.00
11,200.0	90.00	301.79	7,208.0	3,710.3	-1,688.9	4,030.6	0.00	0.00	0.00
11,300.0	90.00	301.79	7,208.0	3,763.0	-1,773.9	4,121.1	0.00	0.00	0.00
11,400.0	90.00	301.79	7,208.0	3,815.7	-1,858.9	4,211.7	0.00	0.00	0.00
11,500.0	90.00	301.79	7,208.0	3,868.3	-1,943.9	4,302.2	0.00	0.00	0.00
11,600.0	90.00	301.79	7,208.0	3,921.0	-2,029.0	4,392.8	0.00	0.00	0.00
11,700.0	90.00	301.79	7,208.0	3,973.7	-2,114.0	4,483.3	0.00	0.00	0.00
11,800.0	90.00	301.79	7,208.0	4,026.4	-2,199.0	4,573.8	0.00	0.00	0.00
11,900.0	90.00	301.79	7,208.0	4,079.0	-2,284.0	4,664.4	0.00	0.00	0.00
12,000.0	90.00	301.79	7,208.0	4,131.7	-2,369.0	4,754.9	0.00	0.00	0.00
12,100.0	90.00	301.79	7,208.0	4,184.4	-2,454.0	4,845.5	0.00	0.00	0.00
12,200.0	90.00	301.79	7,208.0	4,237.1	-2,539.0	4,936.0	0.00	0.00	0.00
12,300.0	90.00	301.79	7,208.0	4,289.7	-2,624.0	5,026.6	0.00	0.00	0.00
12,400.0	90.00	301.79	7,208.0	4,342.4	-2,709.0	5,117.1	0.00	0.00	0.00
12,500.0	90.00	301.79	7,208.0	4,395.1	-2,794.0	5,207.6	0.00	0.00	0.00
12,600.0	90.00	301.79	7,208.0	4,447.7	-2,879.0	5,298.2	0.00	0.00	0.00
12,639.0	90.00	301.79	7,208.0	4,468.3	-2,912.1	5,333.5	0.00	0.00	0.00
Randall Creek 1-28H (BHL)									

Casing Points					
Measured Depth (ft)	Vertical Depth (ft)	Name	Casing Diameter (")	Hole Diameter (")	
1,350.0	1,350.0	9 5/8"	9-5/8	12-1/4	
7,480.5	7,208.0	7"	7	8-3/4	
12,639.0	7,208.0	4 1/2"	4-1/2	6-1/4	

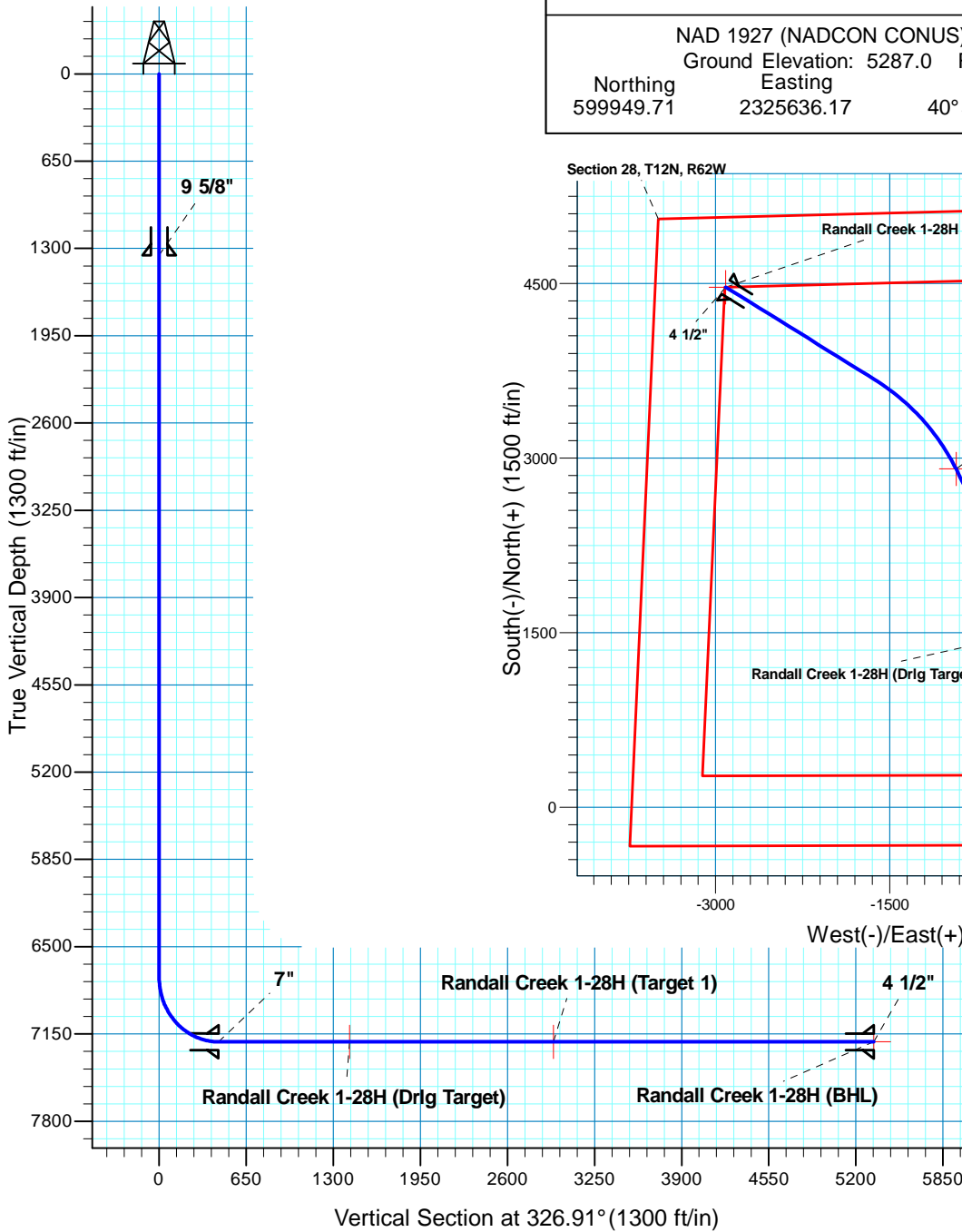
# Randall Creek 1-28H

Section 28 T12N R62W

Weld County, CO



Surface Location			
NAD 1927 (NADCON CONUS) Colorado North 501			
Ground Elevation: 5287.0 RIG @ 5312.0ft (TBD)			
Northing	Easting	Latitude	Longitude
599949.71	2325636.17	40° 58' 27.502 N	104° 19' 14.880 W



**T M**  
 Azimuths to True North  
 Magnetic North: 8.81°  
 Magnetic Field  
 Strength: 53634.6snT  
 Dip Angle: 67.64°  
 Date: 2/5/2010  
 Model: IGRF200510

Project: DJ - Hereford Ranch  
 Site: Randall Creek 01-28H  
 Well: Randall Creek 1-28H  
 Plan: APD

## SECTION DETAILS

Sec	MD	Inc	Azi	TVD	+N/-S	+E/-W	DLeg	TFace	VSec	Target
1	0.0	0.00	0.00	0.0	0.0	0.0	0.00	0.00	0.0	
2	6730.5	0.00	0.00	6730.5	0.0	0.0	0.00	0.00	0.0	
3	7480.5	90.00	348.69	7208.0	468.2	-93.6	12.00	348.69	443.4	
4	8532.8	90.00	348.69	7208.0	1500.0	-300.0	0.00	0.00	1420.5	Randall Creek 1-28H (Drig Target)
5	9042.8	90.00	333.39	7208.0	1980.9	-465.2	3.00	-90.00	1913.6	Randall Creek 1-28H (Target 1)
6	10077.4	90.00	333.39	7208.0	2905.9	-928.6	0.00	0.00	2941.5	Randall Creek 1-28H (Target 1)
7	11130.9	90.00	301.79	7208.0	3673.9	-1630.2	3.00	-90.00	3968.0	Randall Creek 1-28H (BHL)
8	12639.0	90.00	301.79	7208.0	4468.3	-2912.1	0.00	0.00	5333.5	Randall Creek 1-28H (BHL)

## TARGET DETAILS

Name	TVD	+N/-S	+E/-W	Northing	Easting	Latitude	Longitude	Shape
Randall Creek 1-28H (BHL)	7208.0	4468.3	-2912.1	604378.86	2322664.90	40° 59' 11.648 N	104° 19' 52.849 W	Point
Randall Creek 1-28H (Drig Target)	7208.0	1500.0	-300.0	601445.58	2325316.25	40° 58' 42.322 N	104° 19' 18.791 W	Point
Randall Creek 1-28H (Target 1)	7208.0	2905.9	-928.6	602843.00	2324669.00	40° 58' 56.213 N	104° 19' 26.987 W	Po int