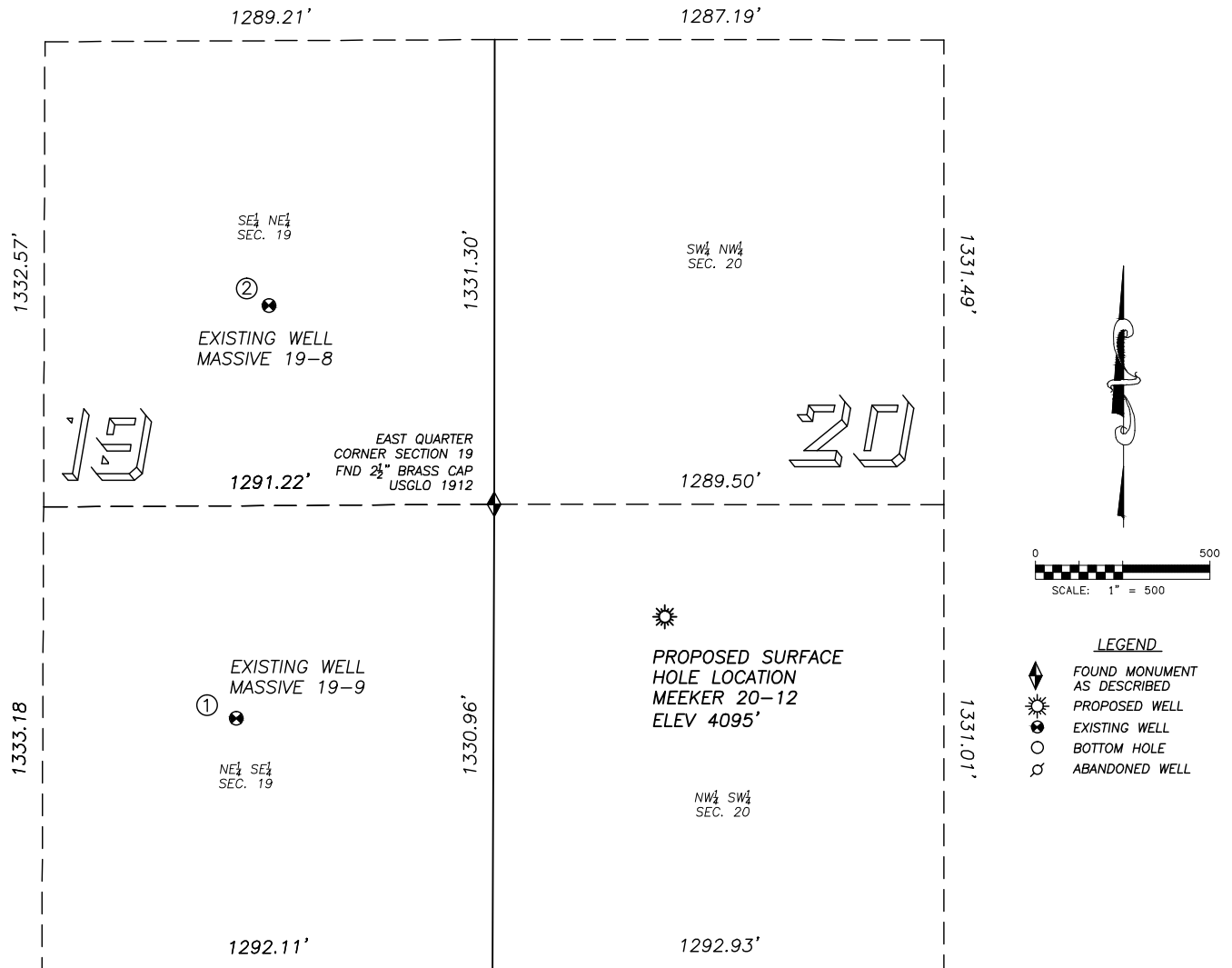


# SITE SKETCH MEEKER 20-12

SECTION 20, TOWNSHIP 2 SOUTH, RANGE 46 WEST OF THE 6TH PRINCIPAL MERIDIAN



①

**MASSIVE 19-9**  
NE/SE SEC. 19  
2055' FSL, 737' FEL  
1262' SW OF PROPOSED  
SURFACE HOLE LOCATION  
LAT. N39.86636°  
LONG. W102.56045°  
EL: 4124'  
PDOP 1.3

②

**MASSIVE 19-8**  
SE/NE SEC. 19  
2091' FNL, 646' FEL  
1444' NW OF PROPOSED  
SURFACE HOLE LOCATION  
LAT. N39.86960°  
LONG. W102.56011°  
EL: 4099'  
PDOP 3.1

## NOTES:

- THIS DOES NOT REPRESENT A BOUNDARY SURVEY
- THE LATITUDES AND LONGITUDES SHOWN ARE REFERENCED TO NAD83
- DATUM FOR ELEVATION IS NAVD88. ELEVATIONS ARE DERIVED FROM GPS-RTK OBSERVATIONS PROCESSED THROUGH OPUS, UTILIZING THE GEOID03 MODEL.