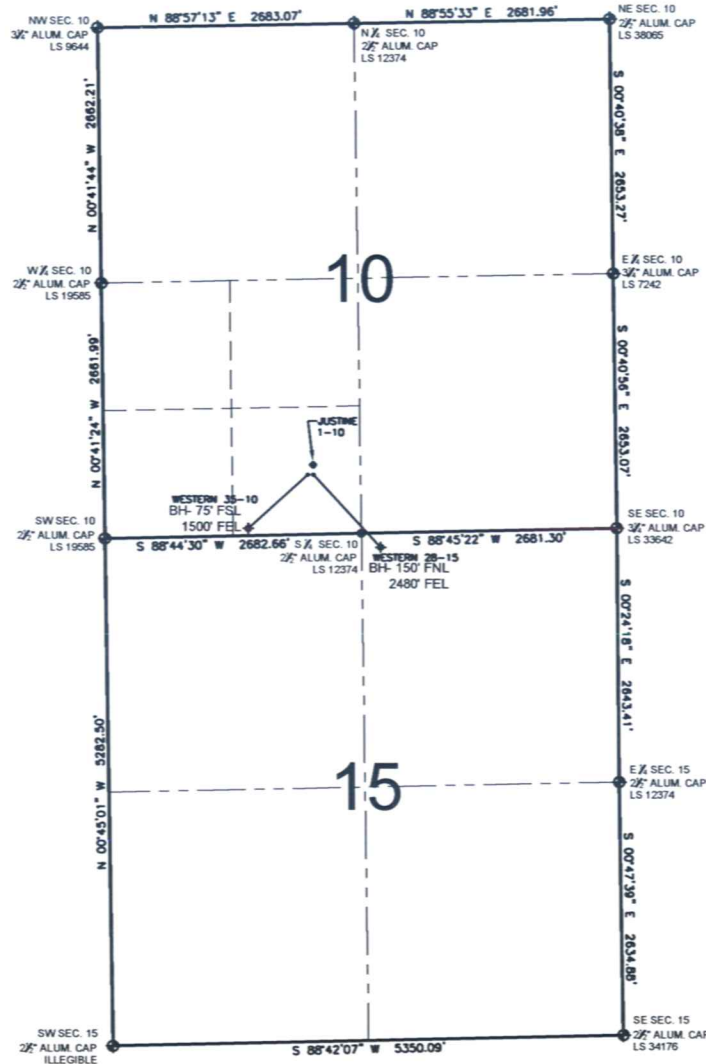


PAD DRAWING - WESTERN 2 PAD

SECTION 10, TOWNSHIP 4 NORTH, RANGE 66 WEST, 6TH P.M.



NOTES:

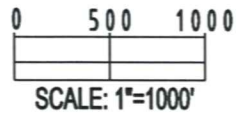
1. THIS SURVEY WAS DONE BY GPS METHODS AND CONFORMS TO THE MINIMUM STANDARDS SET BY THE C.O.G.C.C., RULE NO. 215
2. ELEVATIONS SHOWN AT THE WELL HEAD, AS WELL AS HORIZONTAL CONTROL, ARE BASED ON GPS-RTK VALUES DERIVED FROM DOING 2-HOUR STATIC GPS SESSIONS AND REDUCTIONS USING O.P.U.S. SOLUTIONS.
VERTICAL = NAVD88; HORIZONTAL = NAD83/92
3. THE BEARINGS SHOWN HEREON ARE BASED ON GPS OBSERVATIONS BETWEEN THE MONUMENTS SHOWN HEREON AS FOUND ON THE FIELD DATE BELOW.
4. DISTANCES SHOWN ARE AT GROUND LEVEL, AS MEASURED IN THE FIELD, WITH TIES TO WELLS MEASURED AT A PERPENDICULAR TO SECTION LINES.


LEGEND

- = EXISTING MONUMENT
 = BOTTOM HOLE
 BH= BOTTOM HOLE
 = PROPOSED WELL
 = EXISTING WELL

NOTES:

- WESTERN 35-10 TO BE AT 620' FSL, 2174' FWL.
 BOTTOM HOLE AT 75' FSL & 1500' FWL.
 WESTERN 28-15 TO BE AT 620' FSL, 2190' FWL.
 BOTTOM HOLE AT 150' FNL & 2480' FEL.
 JUSTINE 1-10 TO BE AT 668' FSL, 2190' FWL.



REVISIONS		PREPARED BY:	 Petroleum Field Services, LLC 1801 W. 13th Ave. Denver, CO 80204
INITIAL	DATE		
SMF	12-28-09		

KERR-MCGEE OIL & GAS ONSHORE LP

FIELD DATE:
10-13-09

DRAWING DATE:
10-14-09

BY:
SMF

PAD NAME:
WESTERN 2 PAD

SURFACE LOCATION:

WELD COUNTY, COLORADO
SE 1/4 SW 1/4, SEC. 10, T4N, R66W