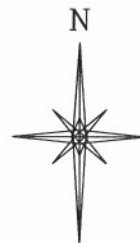
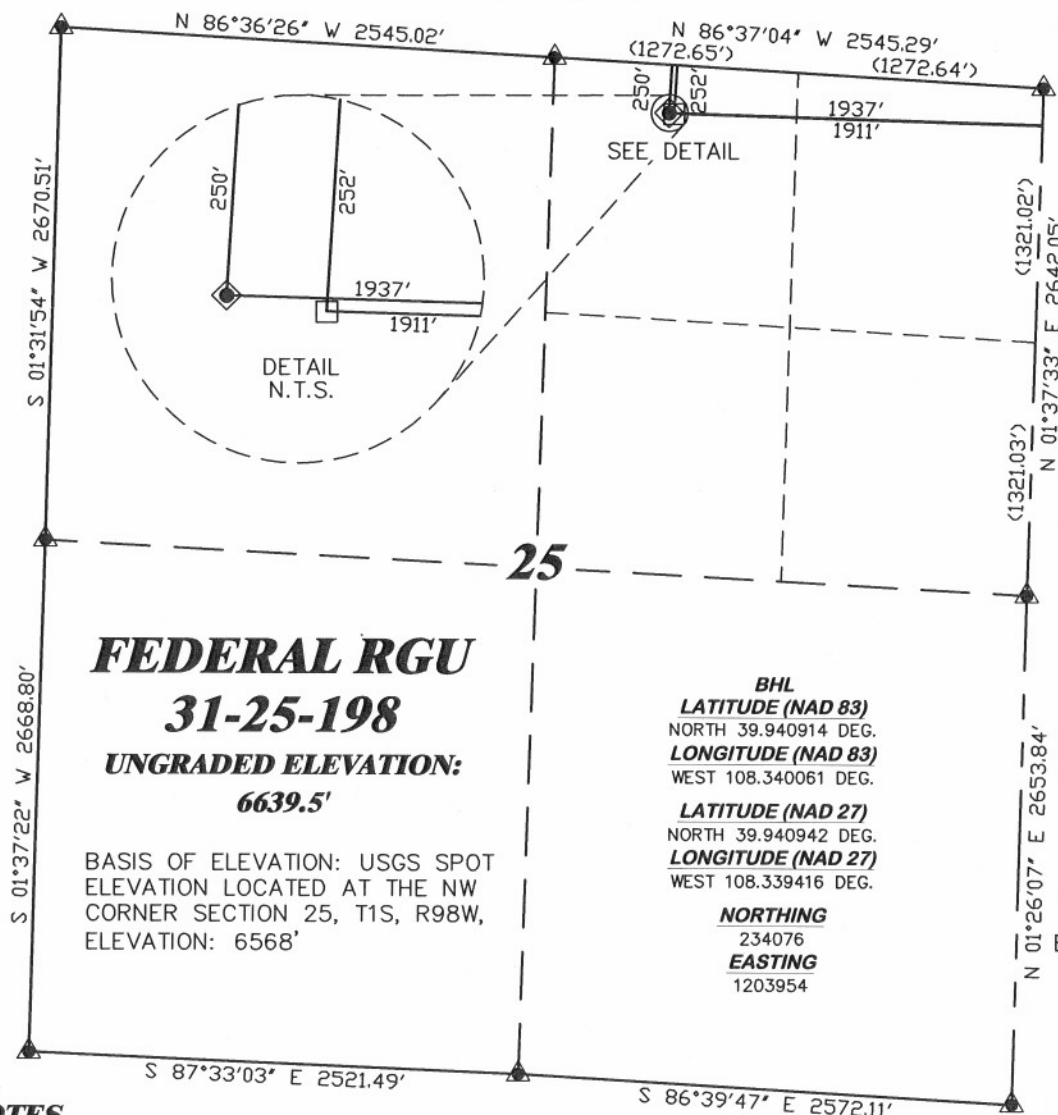


R. 98 W.



SCALE 1" = 1000'

T. 1 S.



FEDERAL RGU

31-25-198

UNGRADED ELEVATION:

6639.5'

BASIS OF ELEVATION: USGS SPOT
ELEVATION LOCATED AT THE NW
CORNER SECTION 25, T1S, R98W,
ELEVATION: 6568'

BHL
LATITUDE (NAD 83)
NORTH 39.940914 DEG.
LONGITUDE (NAD 83)
WEST 108.340061 DEG.

LATITUDE (NAD 27)
NORTH 39.940942 DEG.
LONGITUDE (NAD 27)
WEST 108.339416 DEG.

NORTHING
234076
EASTING
1203954

LATITUDE (NAD 83)
NORTH 39.940923 DEG.
LONGITUDE (NAD 83)
WEST 108.340153 DEG.

LATITUDE (NAD 27)
NORTH 39.940951 DEG.
LONGITUDE (NAD 27)
WEST 108.339509 DEG.

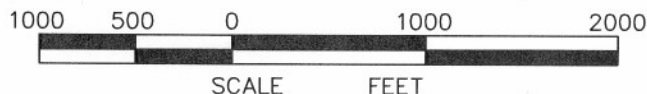
NORTHING
234079.58
EASTING
1203927.85

BASIS OF BEARING/DATUM
SPCS CO NORTH NAD 27
BASED ON NGS TRIANGULATION
STATION "BINER"

NOTES

HIGH PLATEAU DESERT
NO EXISTING FEATURES WITHIN
400' RADIUS OF WELL SITE.

GPS OPERATOR MARK BESSIE
OBSERVED A PDOP OF 2.4.
ALL GPS OBSERVATIONS ARE IN
COMPLIANCE WITH COGCC RULE No.215.



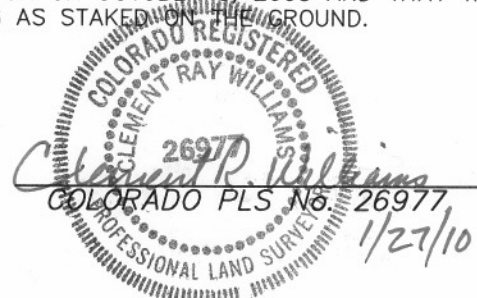
SURVEYOR'S STATEMENT

I, CLEMENT R. WILLIAMS, OF ROCK SPRINGS, WYOMING, HEREBY STATE: THIS MAP WAS MADE FROM NOTES TAKEN DURING AN ACTUAL FIELD SURVEY DONE UNDER MY DIRECT SUPERVISION ON OCTOBER 8, 2008 AND THAT THIS PLAT CORRECTLY SHOWS THE LOCATION OF FEDERAL RGU 31-25-198 AS STAKED ON THE GROUND.

LEGEND

- ◆ WELL LOCATION
- BOTTOM HOLE LOC. (APPROX)
- FOUND MONUMENT
- ▲ PREVIOUSLY FOUND MONUMENT

FEDERAL RGU 31-25-198 PAD



DRG RIFFIN & ASSOCIATES, INC.
(307) 362-5028 1414 ELK ST., ROCK SPRINGS, WY 82901

DRAWN: 10/21/09 - MMM

SCALE: 1" = 1000'

REVISED: 1/27/10 - MMM

DRG JOB No. 17148

REVISED BHL

EXHIBIT 1

**PLAT OF DRILLING LOCATION
FOR
WILLIAMS PRODUCTION RMT COMPANY**
**250' F/NL & 1937' F/EL, SECTION 25,
T. 1 S., R. 98 W., 6th P.M.
RIO BLANCO COUNTY, COLORADO**