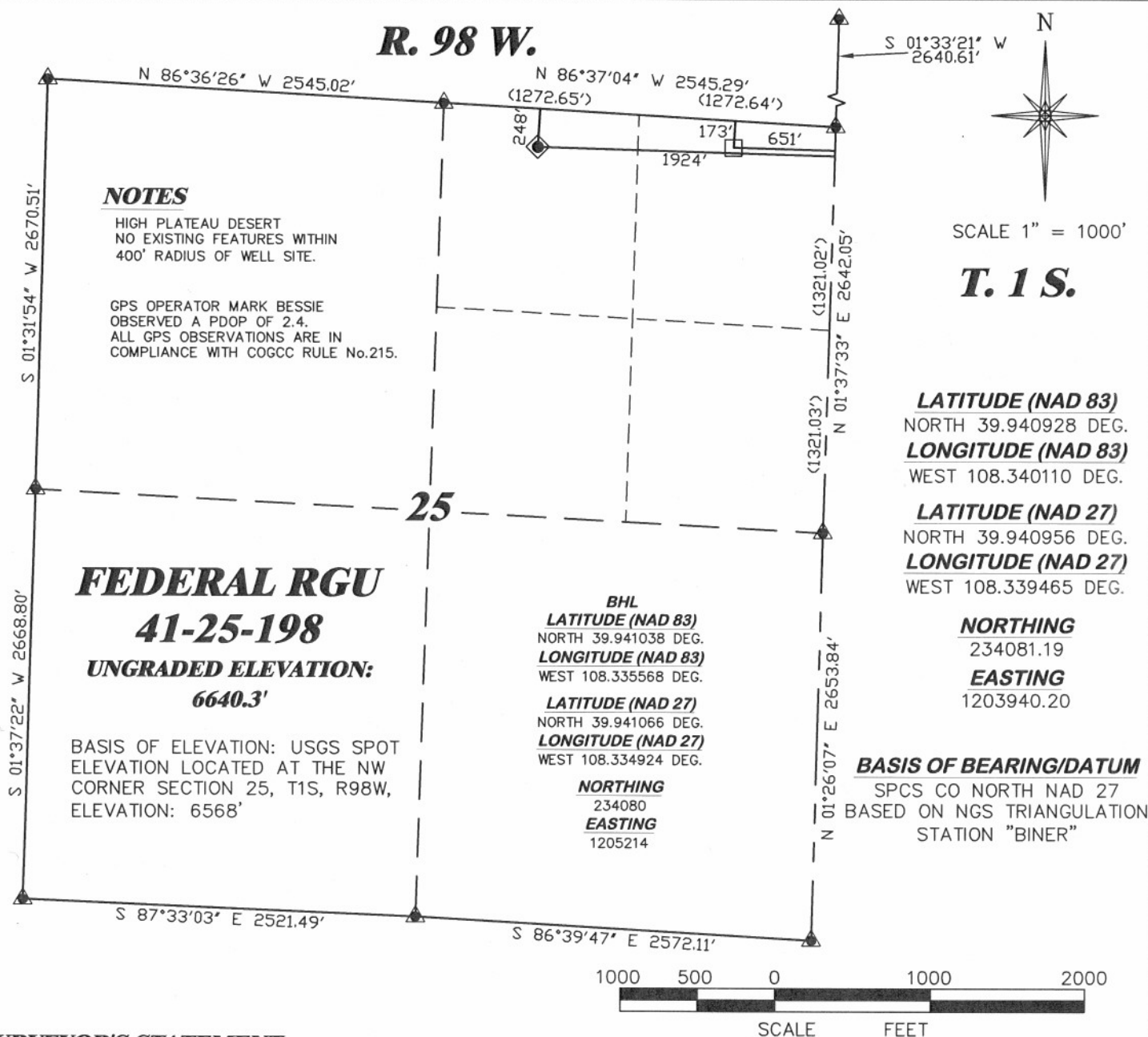


R. 98 W.



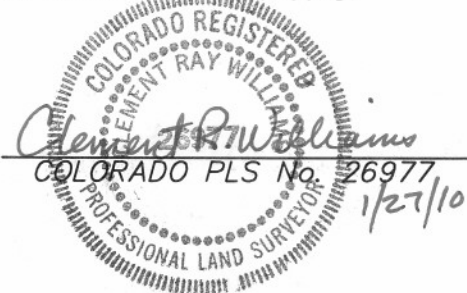
SURVEYOR'S STATEMENT

I, CLEMENT R. WILLIAMS, OF ROCK SPRINGS, WYOMING, HEREBY STATE: THIS MAP WAS MADE FROM NOTES TAKEN DURING AN ACTUAL FIELD SURVEY DONE UNDER MY DIRECT SUPERVISION ON OCTOBER 8, 2008 AND THAT THIS PLAT CORRECTLY SHOWS THE LOCATION OF FEDERAL RGU 41-25-198 AS STAKED ON THE GROUND.

LEGEND

- ◆ WELL LOCATION
- BOTTOM HOLE LOC. (APPROX)
- FOUND MONUMENT
- ▲ PREVIOUSLY FOUND MONUMENT

FEDERAL RGU 31-25-198 PAD



DRG RIFFIN & ASSOCIATES, INC. (307) 362-5028 1414 ELK ST., ROCK SPRINGS, WY 82901		PLAT OF DRILLING LOCATION FOR WILLIAMS PRODUCTION RMT COMPANY	
DRAWN: 1/27/09 - MMM	SCALE: 1" = 1000'	248' F/NL & 1924' F/EL, SECTION 25, T. 1 S., R. 98 W., 6th P.M. RIO BLANCO COUNTY, COLORADO	
REVISED: 1/27/10 - MMM	DRG JOB No. 17148		
REVISED BHL	EXHIBIT 1		