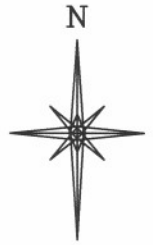


R. 98 W.



SCALE 1" = 1000'

T. 1 S.

NOTES

HIGH PLATEAU DESERT
NO EXISTING FEATURES WITHIN
400' RADIUS OF WELL SITE.

GPS OPERATOR MARK BESSIE
OBSERVED A PDOP OF 2.4.
ALL GPS OBSERVATIONS ARE IN
COMPLIANCE WITH COGCC RULE No.215.

25

FEDERAL RGU

344-24-198

UNGRADED ELEVATION:

6640.6'

BASIS OF ELEVATION: USGS SPOT
ELEVATION LOCATED AT THE NW
CORNER SECTION 25, T1S, R98W,
ELEVATION: 6568'

LATITUDE (NAD 83)

NORTH 39.940983 DEG.

LONGITUDE (NAD 83)

WEST 108.340073 DEG.

LATITUDE (NAD 27)

NORTH 39.941011 DEG.

LONGITUDE (NAD 27)

WEST 108.339428 DEG.

NORTHING

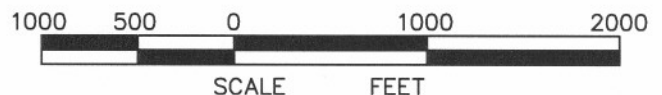
234100.81

EASTING

1203951.22

BASIS OF BEARING/DATUM

SPCS CO NORTH NAD 27
BASED ON NGS TRIANGULATION
STATION "BINER"



SCALE FEET

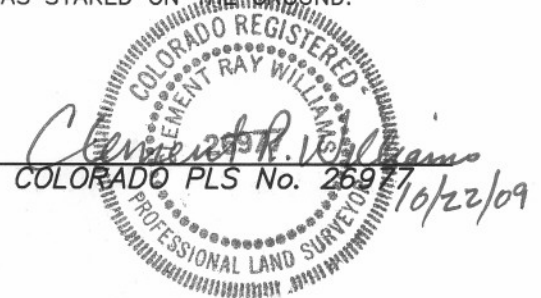
SURVEYOR'S STATEMENT

I, CLEMENT R. WILLIAMS, OF ROCK SPRINGS, WYOMING, HEREBY STATE: THIS MAP WAS MADE FROM NOTES TAKEN DURING AN ACTUAL FIELD SURVEY DONE UNDER MY DIRECT SUPERVISION ON OCTOBER 8, 2008 AND THAT THIS PLAT CORRECTLY SHOWS THE LOCATION OF FEDERAL RGU 344-24-198 AS STAKED ON THE GROUND.

LEGEND

- ◆ WELL LOCATION
- BOTTOM HOLE LOC. (APPROX)
- FOUND MONUMENT
- ▲ PREVIOUSLY FOUND MONUMENT

FEDERAL RGU 31-25-198 PAD



RIFFIN & ASSOCIATES, INC.

(307) 362-5028

1414 ELK ST., ROCK SPRINGS, WY 82901

DRAWN: 1/27/09 - MMM

SCALE: 1" = 1000'

REVISED: 10/20/09 - MMM

DRG JOB No. 17148

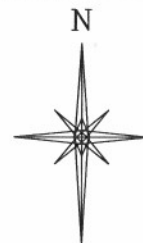
MISC. REVISIONS

EXHIBIT 1

**PLAT OF DRILLING LOCATION
FOR
WILLIAMS PRODUCTION RMT COMPANY**

**227' F/NL & 1914' F/EL, SECTION 25,
T. 1 S., R. 98 W., 6th P.M.
RIO BLANCO COUNTY, COLORADO**

R. 98 W.



SCALE 1" = 1000'

T. 1 S.

**FEDERAL RGU
344-24-198
BHL**

NOTES

HIGH PLATEAU DESERT
NO EXISTING FEATURES WITHIN
400' RADIUS OF WELL SITE.

GPS OPERATOR MARK BESSIE
OBSERVED A PDOP OF 2.4.
ALL GPS OBSERVATIONS ARE IN
COMPLIANCE WITH COGCC RULE No.215.

LATITUDE (NAD 83)

NORTH 39.943196 DEG.

LONGITUDE (NAD 83)

WEST 108.335585 DEG.

LATITUDE (NAD 27)

NORTH 39.943224 DEG.

LONGITUDE (NAD 27)

WEST 108.334941 DEG.

NORTHING

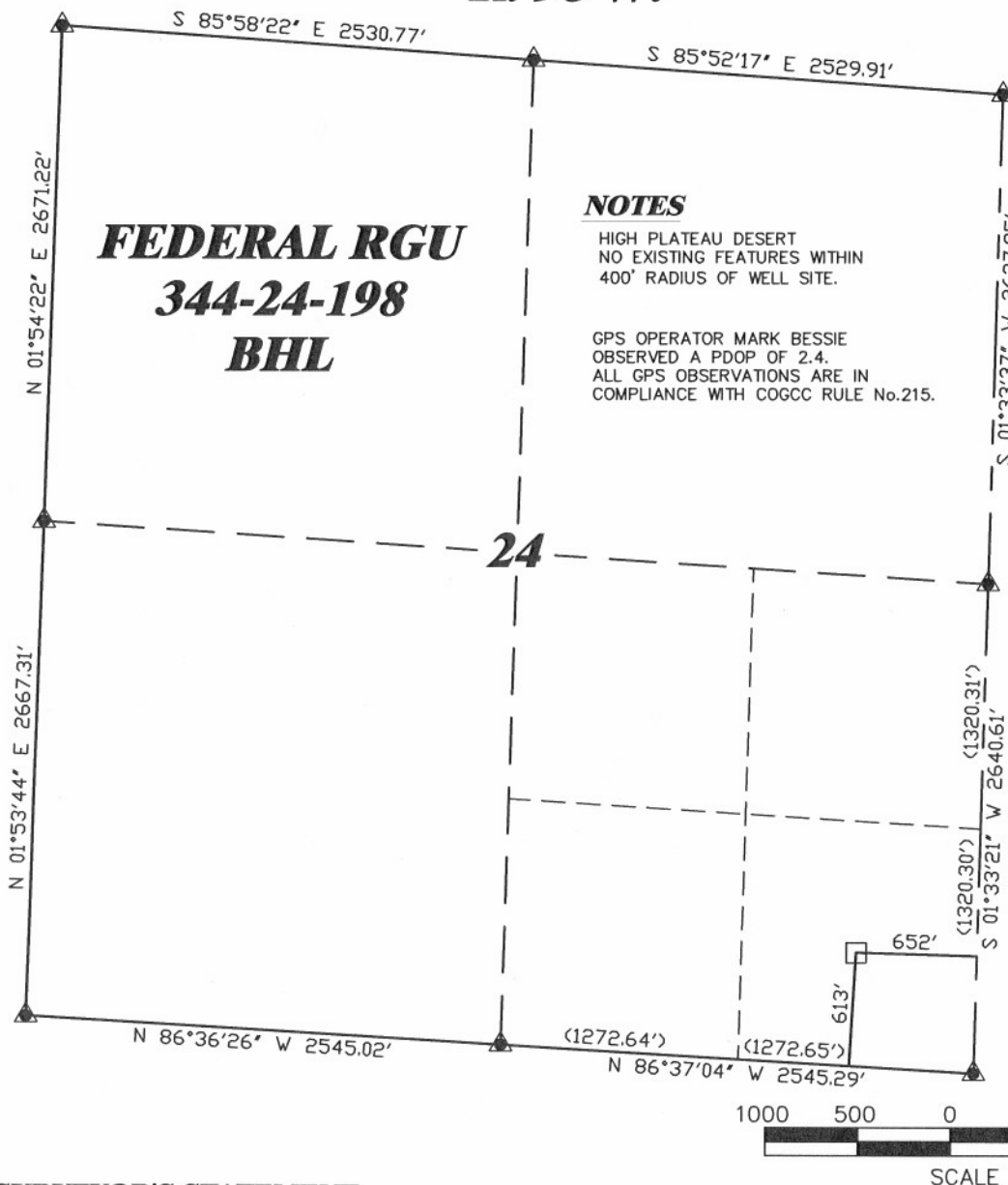
234866

EASTING

1205235

BASIS OF BEARING/DATUM

SPCS CO NORTH NAD 27
BASED ON NGS TRIANGULATION
STATION "BINER"



SURVEYOR'S STATEMENT

I, CLEMENT R. WILLIAMS, OF ROCK SPRINGS, WYOMING, HEREBY STATE: THIS MAP WAS MADE FROM NOTES TAKEN DURING AN ACTUAL FIELD SURVEY DONE UNDER MY DIRECT SUPERVISION ON OCTOBER 8, 2008 AND THAT THIS PLAT CORRECTLY SHOWS THE LOCATION OF FEDERAL RGU 344-24-198 BOTTOM HOLE.

LEGEND

- ◆ WELL LOCATION
- BOTTOM HOLE LOC. (APPROX)
- FOUND MONUMENT
- ▲ PREVIOUSLY FOUND MONUMENT



FEDERAL RGU 31-25-198 PAD



RIFFIN & ASSOCIATES, INC.

(307) 362-5028

1414 ELK ST., ROCK SPRINGS, WY 82901

DRAWN: 1/27/09 - MMM

SCALE: 1" = 1000'

REVISED: 1/27/10 - MMM

DRG JOB No. 17148

REVISED BHL

EXHIBIT 1

**PLAT OF DRILLING LOCATION
FOR
WILLIAMS PRODUCTION RMT COMPANY**

**613' F/SL & 652' F/EL, SECTION 24,
T. 1 S., R. 98 W., 6th P.M.
RIO BLANCO COUNTY, COLORADO**