

R. 98 W.



SCALE 1" = 1000'

T. 1 S.

NOTES

HIGH PLATEAU DESERT
NO EXISTING FEATURES WITHIN
400' RADIUS OF WELL SITE.

GPS OPERATOR MARK BESSIE
OBSERVED A PDOP OF 2.4.
ALL GPS OBSERVATIONS ARE IN
COMPLIANCE WITH COGCC RULE No.215.

25

FEDERAL RGU

434-24-198

UNGRADED ELEVATION:

6640.0'

BASIS OF ELEVATION: USGS SPOT
ELEVATION LOCATED AT THE NW
CORNER SECTION 25, T1S, R98W,
ELEVATION: 6568'

LATITUDE (NAD 83)

NORTH 39.940978 DEG.

LONGITUDE (NAD 83)

WEST 108.340116 DEG.

LATITUDE (NAD 27)

NORTH 39.941006 DEG.

LONGITUDE (NAD 27)

WEST 108.339472 DEG.

NORTHING

234099.20

EASTING

1203938.86

BASIS OF BEARING/DATUM

SPCS CO NORTH NAD 27
BASED ON NGS TRIANGULATION
STATION "BINER"



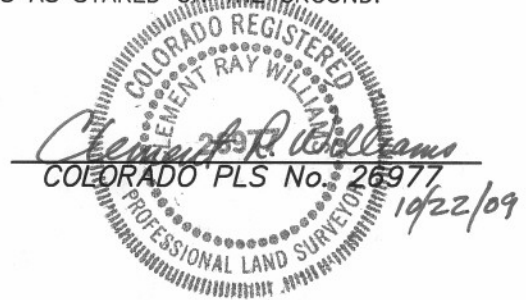
SURVEYOR'S STATEMENT

I, CLEMENT R. WILLIAMS, OF ROCK SPRINGS, WYOMING, HEREBY STATE: THIS MAP WAS MADE FROM NOTES TAKEN DURING AN ACTUAL FIELD SURVEY DONE UNDER MY DIRECT SUPERVISION ON OCTOBER 8, 2008 AND THAT THIS PLAT CORRECTLY SHOWS THE LOCATION OF FEDERAL RGU 434-24-198 AS STAKED ON THE GROUND.

LEGEND

- ◆ WELL LOCATION
- BOTTOM HOLE LOC. (APPROX)
- FOUND MONUMENT
- ▲ PREVIOUSLY FOUND MONUMENT

FEDERAL RGU 31-25-198 PAD



DRG RIFFIN & ASSOCIATES, INC.
(307) 362-5028 1414 ELK ST., ROCK SPRINGS, WY 82901

DRAWN: 1/27/09 - MMM

SCALE: 1" = 1000'

REVISED: 10/21/09 - MMM

DRG JOB No. 17148

MISC. REVISIONS

EXHIBIT 1

**PLAT OF DRILLING LOCATION
FOR
WILLIAMS PRODUCTION RMT COMPANY**

230' F/NL & 1926' F/EL, SECTION 25,

T. 1 S., R. 98 W., 6th P.M.

RIO BLANCO COUNTY, COLORADO

R. 98 W.



SCALE 1" = 1000'

T. 1 S.

**FEDERAL RGU
434-24-198
BHL**

NOTES

HIGH PLATEAU DESERT
NO EXISTING FEATURES WITHIN
400' RADIUS OF WELL SITE.

GPS OPERATOR MARK BESSIE
OBSERVED A PDOP OF 2.4.
ALL GPS OBSERVATIONS ARE IN
COMPLIANCE WITH COGCC RULE No.215.

LATITUDE (NAD 83)

NORTH 39.941837 DEG.

LONGITUDE (NAD 83)

WEST 108.340037 DEG.

LATITUDE (NAD 27)

NORTH 39.941865 DEG.

LONGITUDE (NAD 27)

WEST 108.339392 DEG.

NORTHING

234411

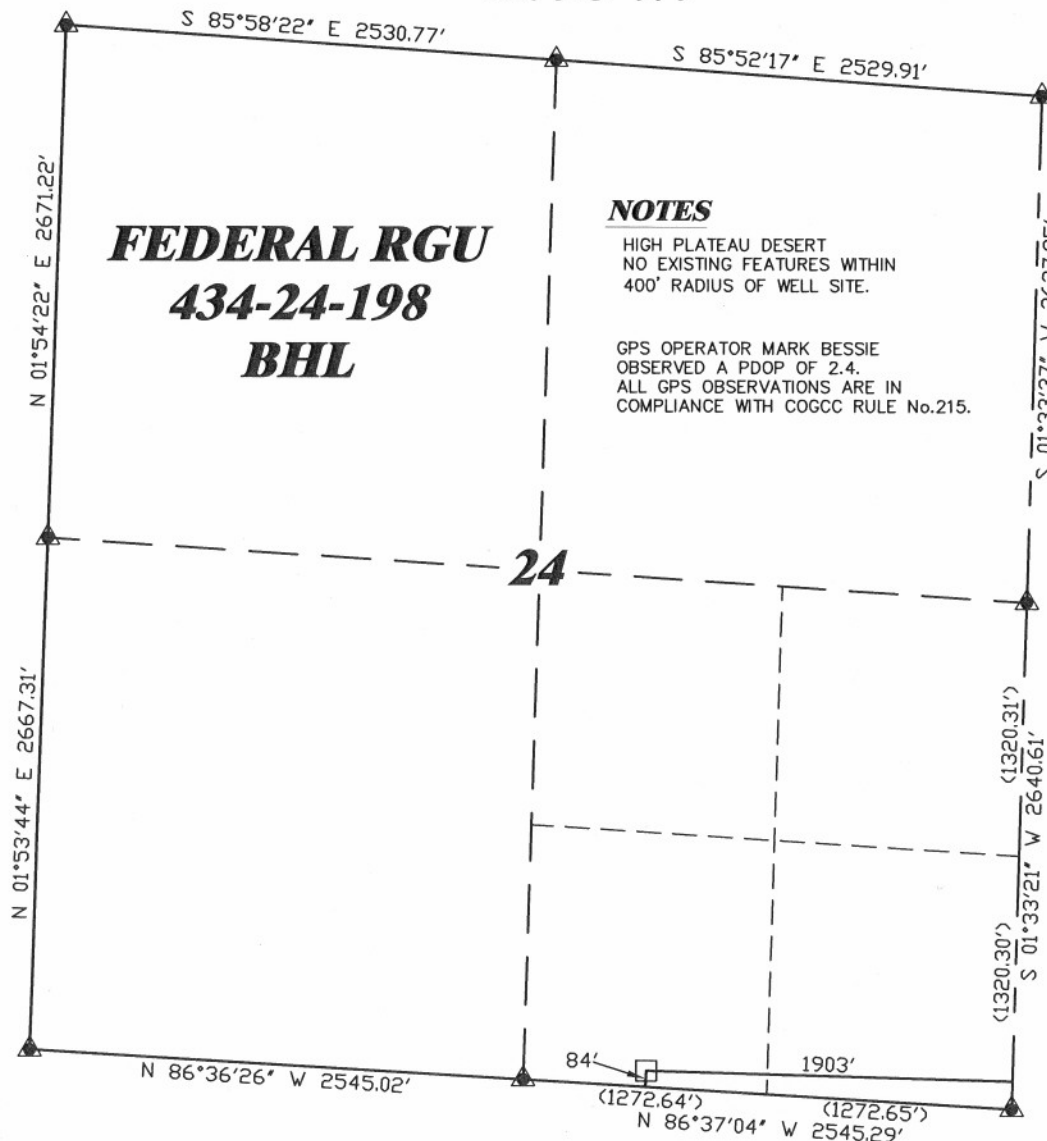
EASTING

1203971

BASIS OF BEARING/DATUM

SPCS CO NORTH NAD 27

BASED ON NGS TRIANGULATION
STATION "BINER"

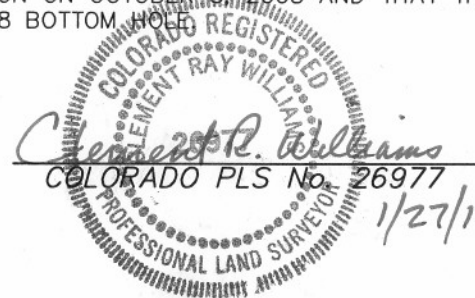


SURVEYOR'S STATEMENT

I, CLEMENT R. WILLIAMS, OF ROCK SPRINGS, WYOMING, HEREBY STATE: THIS MAP WAS MADE FROM NOTES TAKEN DURING AN ACTUAL FIELD SURVEY DONE UNDER MY DIRECT SUPERVISION ON OCTOBER 8, 2008 AND THAT THIS PLAT CORRECTLY SHOWS THE LOCATION OF FEDERAL RGU 434-24-198 BOTTOM HOLE

LEGEND

- ◆ WELL LOCATION
- BOTTOM HOLE LOC. (APPROX)
- FOUND MONUMENT
- ▲ PREVIOUSLY FOUND MONUMENT



FEDERAL RGU 31-25-198 PAD



RIFFIN & ASSOCIATES, INC.

(307) 362-5028

1414 ELK ST., ROCK SPRINGS, WY 82901

DRAWN: 1/27/09 - MMM

SCALE: 1" = 1000'

REVISED: 1/27/10 - MMM

DRG JOB No. 17148

REVISED BHL

EXHIBIT 1

**PLAT OF DRILLING LOCATION
FOR
WILLIAMS PRODUCTION RMT COMPANY**

**84' F/SL & 1903' F/EL, SECTION 24,
T. 1 S., R. 98 W., 6th P.M.
RIO BLANCO COUNTY, COLORADO**