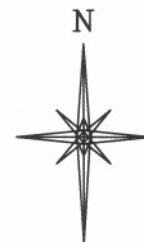


**R. 98 W.**



SCALE 1" = 1000'

**T. 1 S.**

**NOTES**

HIGH PLATEAU DESERT  
NO EXISTING FEATURES WITHIN  
400' RADIUS OF WELL SITE.

GPS OPERATOR MARK BESSIE  
OBSERVED A PDOP OF 2.4.  
ALL GPS OBSERVATIONS ARE IN  
COMPLIANCE WITH COGCC RULE No.215.

**25**

**FEDERAL RGU**

**524-24-198**

**UNGRADED ELEVATION:**  
**6639.1'**

BASIS OF ELEVATION: USGS SPOT  
ELEVATION LOCATED AT THE NW  
CORNER SECTION 25, T1S, R98W,  
ELEVATION: 6568'

**LATITUDE (NAD 83)**

NORTH 39.940886 DEG.

**LONGITUDE (NAD 83)**

WEST 108.340178 DEG.

**LATITUDE (NAD 27)**

NORTH 39.940914 DEG.

**LONGITUDE (NAD 27)**

WEST 108.339533 DEG.

**NORTHING**

234066.50

**EASTING**

1203920.51

**BASIS OF BEARING/DATUM**

SPCS CO NORTH NAD 27  
BASED ON NGS TRIANGULATION  
STATION "BINER"



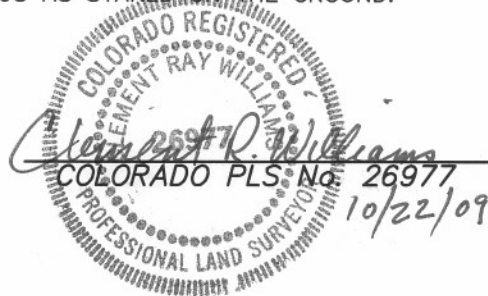
**SURVEYOR'S STATEMENT**

I, CLEMENT R. WILLIAMS, OF ROCK SPRINGS, WYOMING, HEREBY STATE: THIS MAP WAS MADE FROM NOTES TAKEN DURING AN ACTUAL FIELD SURVEY DONE UNDER MY DIRECT SUPERVISION ON OCTOBER 8, 2008 AND THAT THIS PLAT CORRECTLY SHOWS THE LOCATION OF FEDERAL RGU 524-24-198 AS STAKED ON THE GROUND.

**LEGEND**

- ◆ WELL LOCATION
- BOTTOM HOLE LOC. (APPROX)
- FOUND MONUMENT
- ▲ PREVIOUSLY FOUND MONUMENT

FEDERAL RGU 31-25-198 PAD



**RIFFIN & ASSOCIATES, INC.**

(307) 362-5028

1414 ELK ST., ROCK SPRINGS, WY 82901

DRAWN: 10/21/09 - MMM

SCALE: 1" = 1000'

REVISED: NA

DRG JOB No. 17148

EXHIBIT 1

**PLAT OF DRILLING LOCATION  
FOR**

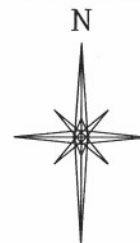
**WILLIAMS PRODUCTION RMT COMPANY**

**263' F/NL & 1944' F/EL, SECTION 25,**

**T. 1 S., R. 98 W., 6th P.M.**

**RIO BLANCO COUNTY, COLORADO**

**R. 98 W.**



SCALE 1" = 1000'

**T. 1 S.**

**FEDERAL RGU  
524-24-198  
BHL**

**NOTES**

HIGH PLATEAU DESERT  
NO EXISTING FEATURES WITHIN  
400' RADIUS OF WELL SITE.

GPS OPERATOR MARK BESSIE  
OBSERVED A PDOP OF 2.4.  
ALL GPS OBSERVATIONS ARE IN  
COMPLIANCE WITH COGCC RULE No.215.

**LATITUDE (NAD 83)**

NORTH 39.941710 DEG.

**LONGITUDE (NAD 83)**

WEST 108.344598 DEG.

**LATITUDE (NAD 27)**

NORTH 39.941738 DEG.

**LONGITUDE (NAD 27)**

WEST 108.343953 DEG.

**NORTHING**

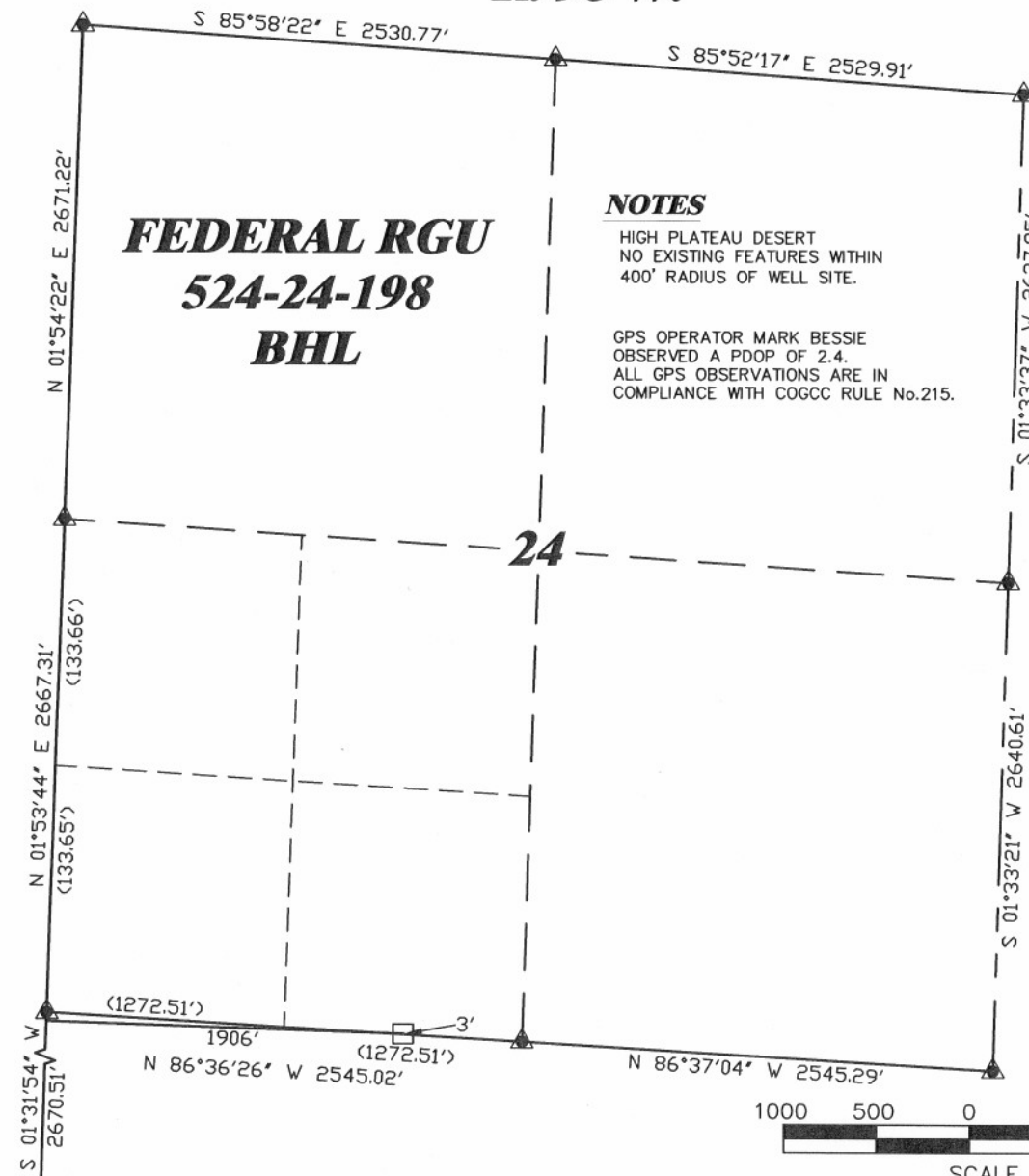
234406

**EASTING**

1202692

**BASIS OF BEARING/DATUM**

SPCS CO NORTH NAD 27  
BASED ON NGS TRIANGULATION  
STATION "BINER"



**SURVEYOR'S STATEMENT**

I, CLEMENT R. WILLIAMS, OF ROCK SPRINGS, WYOMING, HEREBY STATE: THIS MAP WAS MADE FROM NOTES TAKEN DURING AN ACTUAL FIELD SURVEY DONE UNDER MY DIRECT SUPERVISION ON OCTOBER 8, 2008 AND THAT THIS PLAT CORRECTLY SHOWS THE LOCATION OF FEDERAL RGU 524-24-198 BOTTOM HOLE.

**LEGEND**

- ◆ WELL LOCATION
- BOTTOM HOLE LOC. (APPROX)
- FOUND MONUMENT
- ▲ PREVIOUSLY FOUND MONUMENT



FEDERAL RGU 31-25-198 PAD



**RIFFIN & ASSOCIATES, INC.**

(307) 362-5028

1414 ELK ST., ROCK SPRINGS, WY 82901

DRAWN: 10/21/09 - MMM

SCALE: 1" = 1000'

REVISED: 1/27/10 - MMM

DRG JOB No. 17148

REVISED BHL

EXHIBIT 1

**PLAT OF DRILLING LOCATION  
FOR  
WILLIAMS PRODUCTION RMT COMPANY**

**3' F/SL & 1906' F/WL, SECTION 24,  
T. 1 S., R. 98 W., 6th P.M.  
RIO BLANCO COUNTY, COLORADO**