

DALEY LAND SURVEYING, INC.

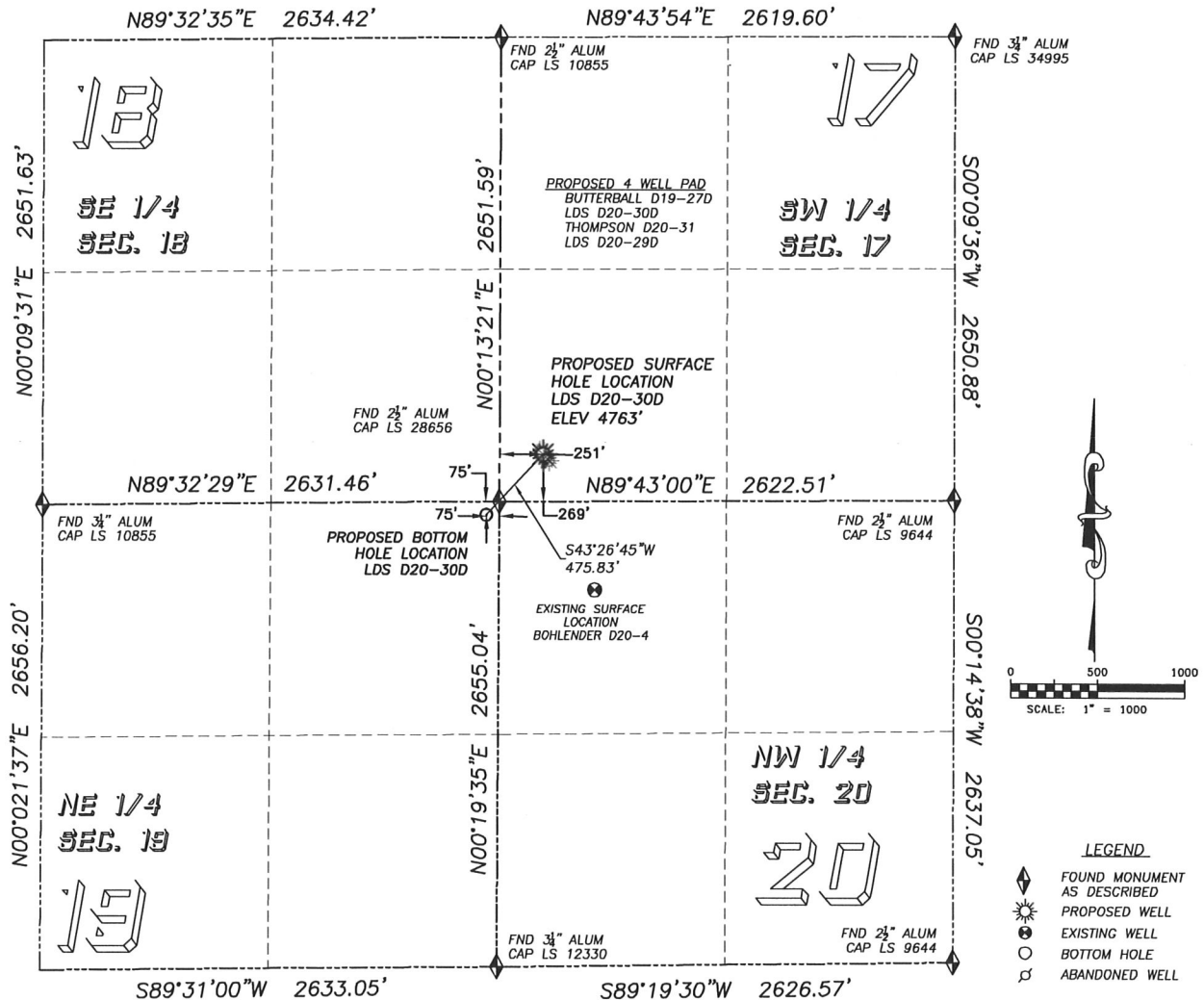
PARKER, CO. 80134

303 953 9841

WELL LOCATION CERTIFICATE

LDS D20-30D

SECTION 17, TOWNSHIP 3 NORTH, RANGE 64 WEST OF THE 6TH PRINCIPAL MERIDIAN

**NAD 83 LATITUDE AND LONGITUDE****LDS D20-30D SURFACE HOLE**

LATITUDE: N40.21880°
 LONGITUDE: W104.58353°
 ELEVATION: 4763'
 PDOP 1.5

269' FSL, 251' FWL

BOTTOM HOLE:

LATITUDE: N40.21785°
 LONGITUDE: W104.58470°
 75' FNL, 75' FEL, SEC. 19

NEAREST EXISTING WELL:

BOHLENDER D20-4 SURFACE HOLE
 LATITUDE: N40.21668°
 LONGITUDE: W104.58246°
 ELEVATION: 4766'
 829' SOUTHEAST

QUARTER/QUARTER: SW4/SW4

NEAREST APPARENT PROPERTY LINE:
 251'± WEST

IN ACCORDANCE WITH A REQUEST FROM MATT CAMPBELL OF NOBLE ENERGY INC., DALEY LAND SURVEYING, INC. HAS DETERMINED THE SURFACE LOCATION OF THE LDS D20-30D WELL TO BE 269' FSL, 251' FWL, AS MEASURED AT NINETY (90) DEGREES FROM THE SECTION LINES OF SECTION 17, TOWNSHIP 3 NORTH, RANGE 64 WEST OF THE 6TH PRINCIPAL MERIDIAN, WELD COUNTY COLORADO.

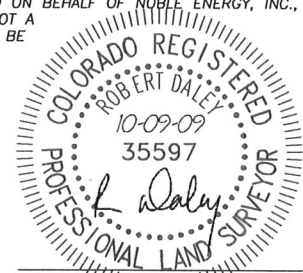
THE BOTTOM HOLE LOCATION PROVIDED BY THE CLIENT IS TO BE 75' FNL, 75' FEL, SEC. 19, T3N, R64W.

I HEREBY CERTIFY THAT THIS WELL LOCATION CERTIFICATE WAS PREPARED BY ME OR UNDER MY DIRECT SUPERVISION, THAT THE WORK WAS COMPLETED ON 09/28/2009 FOR AND ON BEHALF OF NOBLE ENERGY, INC., AND THAT THIS MAP DOES NOT REPRESENT A BOUNDARY SURVEY, IT IS NOT A LAND SURVEY PLAT OR AN IMPROVEMENT SURVEY PLAT AND IT IS NOT TO BE RELIED UPON FOR THE ESTABLISHMENT OF FENCE, BUILDING OR OTHER FUTURE IMPROVEMENT LINES.

NOTES:

- 1) BASIS OF BEARING FOR THIS MAP IS ASSUMED AND BASED UPON GPS OBSERVATIONS MADE BETWEEN MONUMENTS LOCATED AT THE SOUTHWEST AND WEST QUARTER CORNER OF SECTION 17, T.3N., R.64W., AND ALL BEARINGS SHOWN HEREON ARE RELATIVE THERETO.
- 2) HORIZONTAL DATUM IS NAD83.
- 3) VERTICAL DATUM IS NAVD88. ELEVATIONS ARE DERIVED FROM GPS-RTK OBSERVATIONS PROCESSED THROUGH OPUS, UTILIZING THE GEOD03 MODEL.
- 4) SEE VISIBLE IMPROVEMENTS EXHIBIT FOR IMPROVEMENTS WITHIN 400' OF PROPOSED SURFACE HOLE LOCATION
- 5) SURFACE USE: CULTIVATED FIELD

NOTICE: According to Colorado law you MUST commence any legal action based upon any defect in this W.L.C. within three years after you first discover such defect. In no event may any action based upon any such defect in this W.L.C. be commenced more than ten years from the date of the certification shown hereon.



FOR AND ON BEHALF OF
 DALEY LAND SURVEYING INC.,
 Robert Daley, PLS 35597

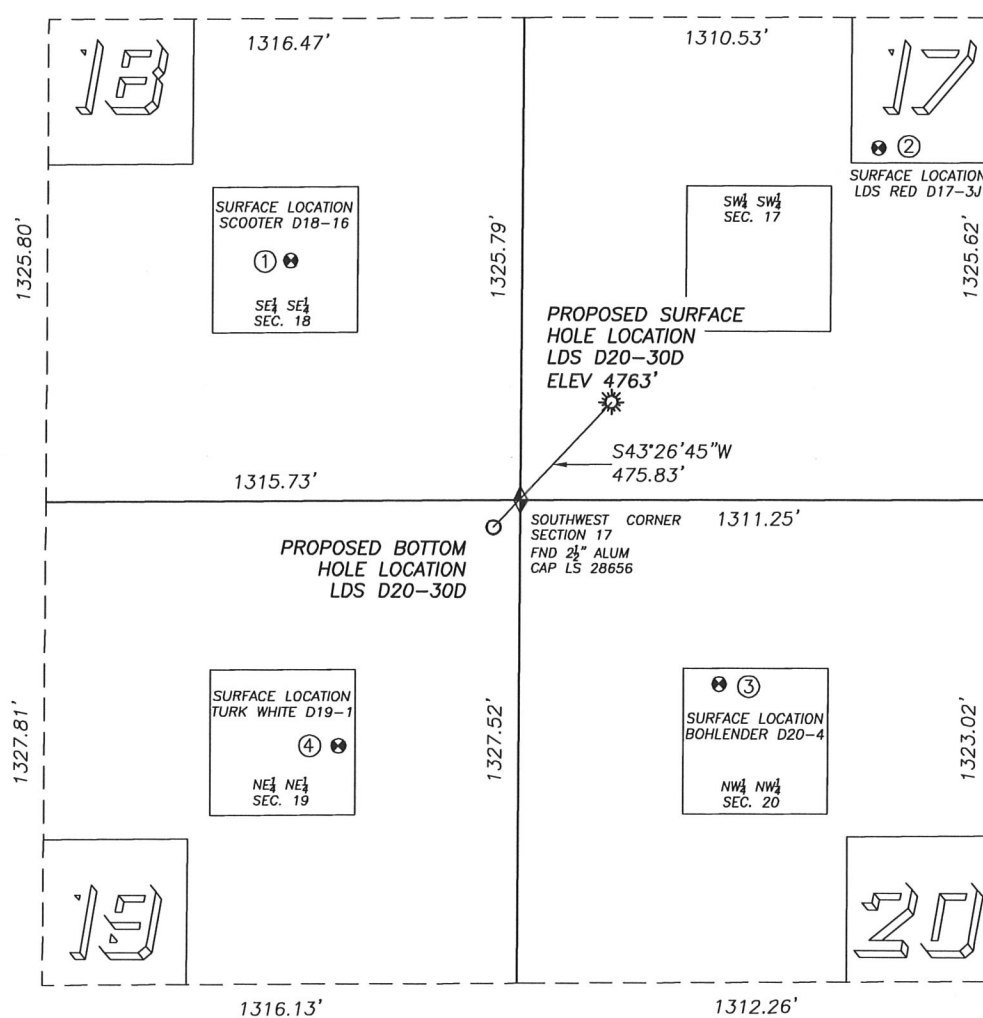
DALEY LAND SURVEYING, INC.

PARKER, CO. 80134

303 953 9841

SITE SKETCH LDS D20-30D

SECTION 17, TOWNSHIP 3 NORTH, RANGE 64 WEST OF THE 6TH PRINCIPAL MERIDIAN



0 500
SCALE: 1" = 500

LEGEND

- FOUND MONUMENT AS DESCRIBED
- PROPOSED WELL
- EXISTING WELL
- BOTTOM HOLE
- ABANDONED WELL

NOTES:

- 1) THIS DOES NOT REPRESENT A BOUNDARY SURVEY
- 2) THE LATITUDES AND LONGITUDES SHOWN ARE REFERENCED TO NAD83
- 3) DATUM FOR ELEVATION IS NAVD88. ELEVATIONS ARE DERIVED FROM GPS-RTK OBSERVATIONS PROCESSED THROUGH OPUS, UTILIZING THE GEOID03 MODEL.

①

SCOOTER D18-16

SE/SE SEC. 18
660' FSL, 643' FEL
924' NW OF PROPOSED
BOTTOM HOLE LOCATION
LAT. N40.21986°
LONG. W104.58673°
EL: 4763'
PDOP 1.8

②

LDS RED D17-3J

SW/SW SEC. 17
967' FSL, 987' FWL
1495' NE OF PROPOSED
BOTTOM HOLE LOCATION
LAT. N40.22073°
LONG. W104.58089°
EL: 4761'
PDOP 2.5

③

BOHLENDER D20-4

NW/NW SEC. 20
506' FNL, 554' FWL
758' SE OF PROPOSED
BOTTOM HOLE LOCATION
LAT. N40.21668°
LONG. W104.58246°
EL: 4766'
PDOP 3.3

④

TURK WHITE D19-1

NE/NE SEC. 19
673' FNL, 501' FEL
739' SW OF PROPOSED
BOTTOM HOLE LOCATION
LAT. N40.21620°
LONG. W104.58624°
EL: 4772'
PDOP 2.5

