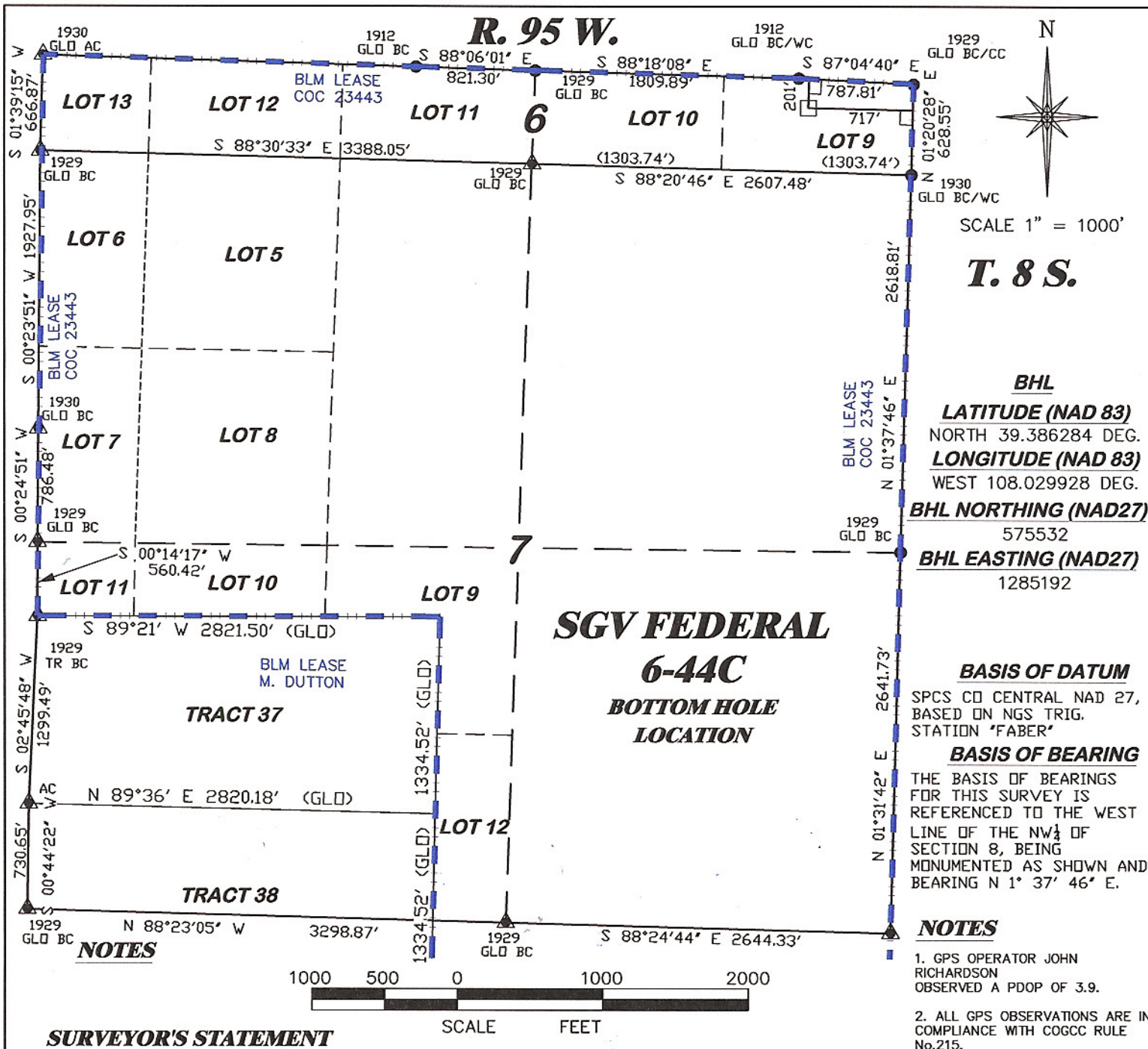


**PLAT OF DRILLING LOCATION
FOR NOBLE ENERGY, INC.
SHL IN NW1/4 OF NW1/4 OF SECTION 8
1224' F/NL & 329' F/WL, SECTION 8,
T. 8 S., R. 95 W., 6th P.M.
GARFIELD COUNTY, COLORADO**



<p>DRG RIFFIN & ASSOCIATES, INC. (307) 362-5028 1414 ELK ST., ROCK SPRINGS, WY 82901</p>		<p>PLAT OF BOTTOM HOLE LOCATION FOR NOBLE ENERGY, INC. SHL IN NW1/4 OF NW1/4 OF SECTION 8</p>	
<p>DRAWN: 3/06/09 - WWG</p>		<p>201' F/NL & 717' F/EL, SECTION 6, T. 8 S., R. 95 W., 6th P.M. GARFIELD COUNTY, COLORADO</p>	
<p>REVISED: 12/4/09 - RCR</p>			
<p>Add Q/Q of Section & Dimensions</p>			
<p>SCALE: 1" = 1000'</p>			
<p>DRG JOB No. 13846</p>			
<p>EXHIBIT 1</p>			