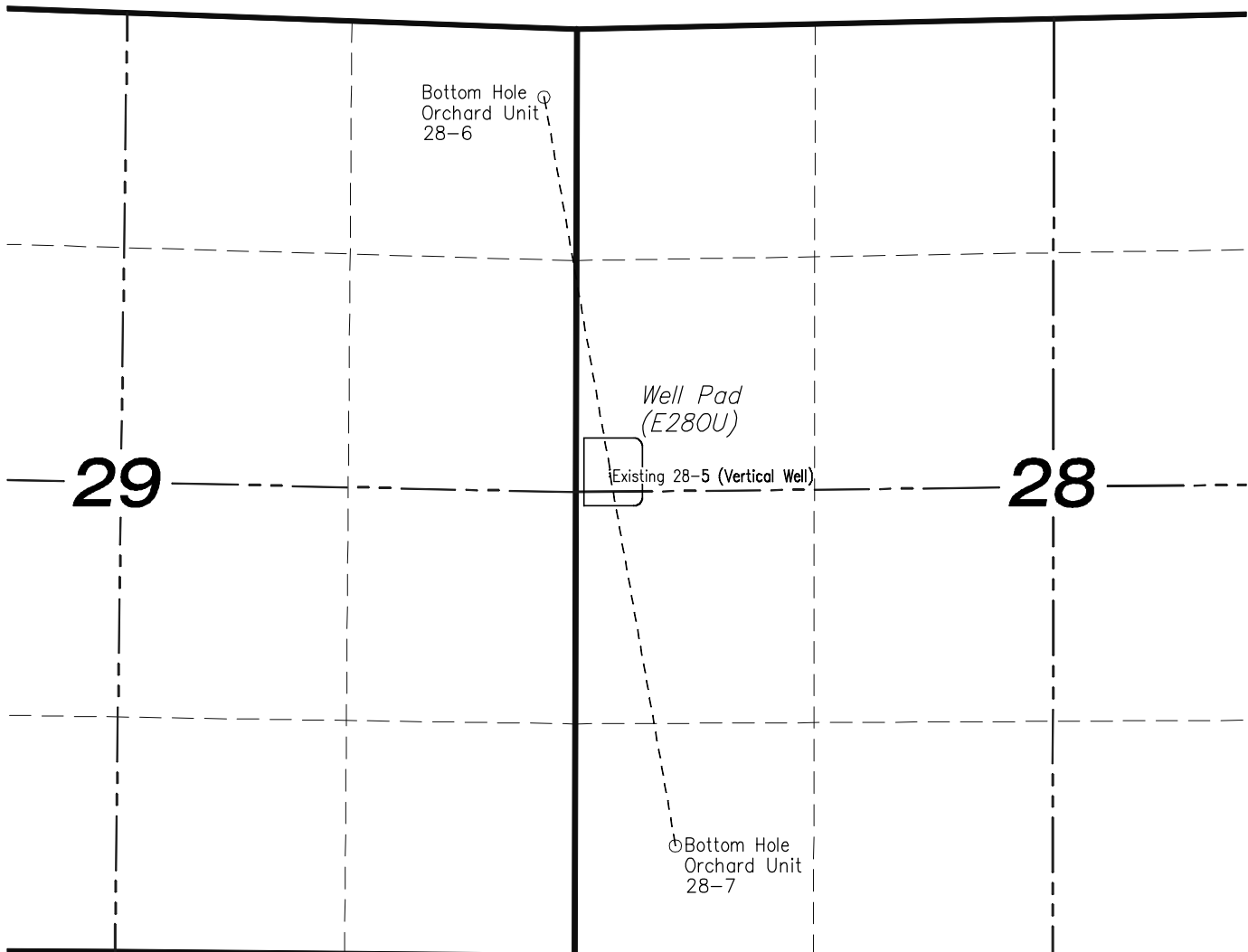
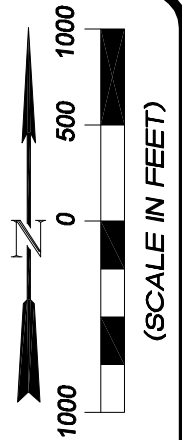


E28OU WELL PAD- REVISION SUMMARY

[illegible]

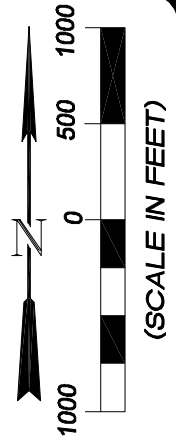
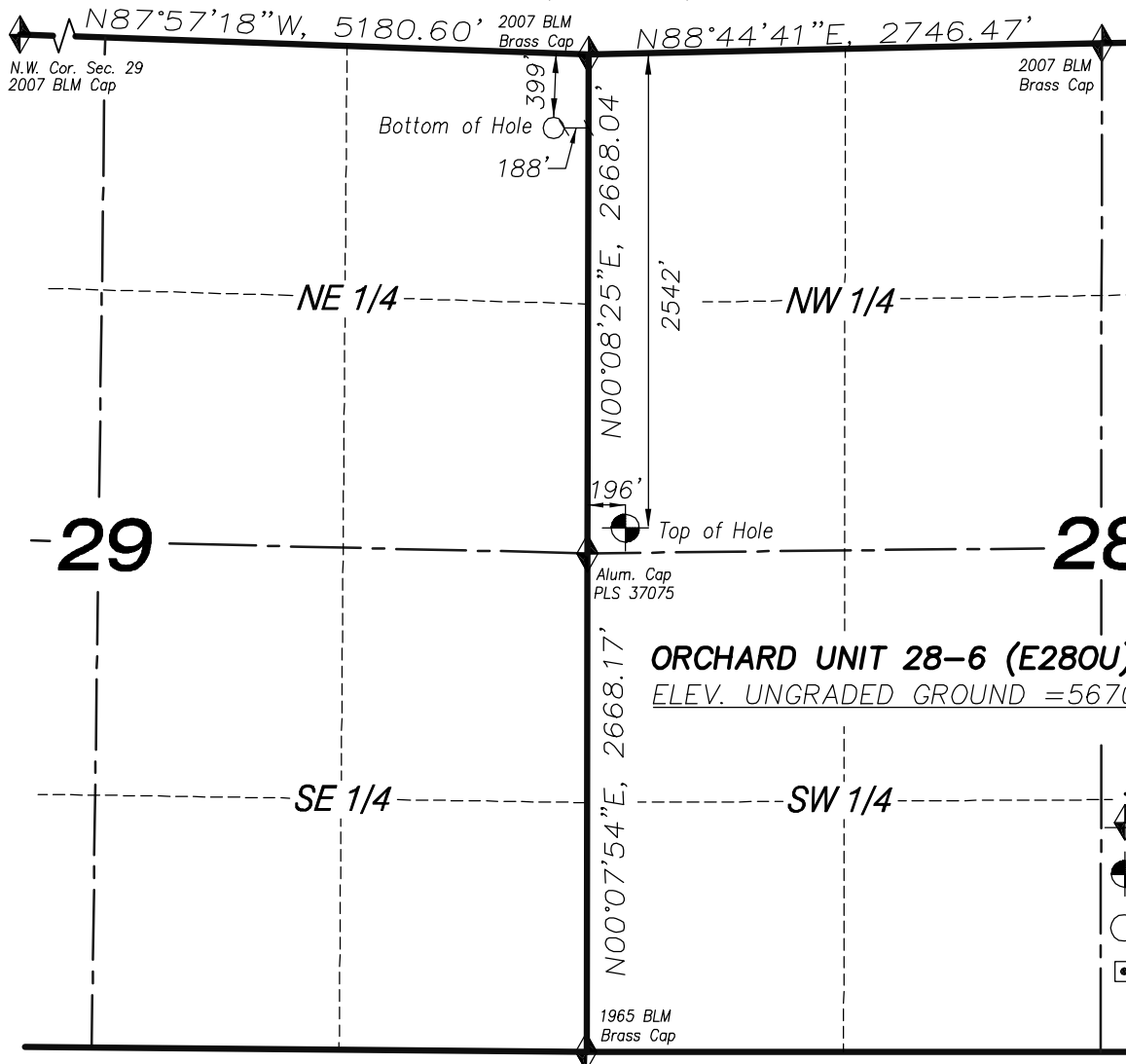
SECTIONS 28 & 29
T8S, R96W, 6th P.M.
EnCana Oil & Gas (USA) Inc.
Well Pad (E28OU)
SECTION DRILLING MAP



906 Main Street
 Evanston, Wyoming 82930
 Phone No. (307) 789-4545



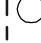

		Scale: 1" = 1000'	SHEET 1 OF 10
Project No.	09-04-22	Date Surveyed: 4/07/09	
Date Drawn:	1/07/10	Latest Revision Date:	

T8S, R96W, 6th P.M.



ORCHARD UNIT 28-6 (E28OU) WELL:
ELEV. UNGRADED GROUND = 5670.6'

LEGEND

-  SECTION CORNER LOCATED
-  SURFACE LOCATION
-  BOTTOM HOLE LOCATION
-  RECORD LOCATION OF CORNER

ORCHARD UNIT 28-6 WELL (E28OU)
 (WELLHEAD LOCATION) NAD 83
 LATITUDE = 39.32082° N
 LONGITUDE = 108.12221° W
 (BOTTOM HOLE LOCATION) NAD 83
 LATITUDE = 39.32671° N
 LONGITUDE = 108.12358° W

CERTIFICATE OF SURVEYOR

I, TED TAGGART OF FRUITA, COLORADO HEREBY CERTIFY THAT THIS MAP WAS MADE FROM NOTES TAKEN DURING AN ACTUAL SURVEY MADE BY ME OR UNDER MY DIRECTION FOR ENCANA OIL & GAS (USA) INC. AND THAT THIS LOCATION HAS BEEN STAKED ON THE GROUND AS SHOWN HEREON.



906 Main Street
 Evanston, Wyoming 82930
 Phone No. (307) 789-4545

NOTES

1. WELL FOOTAGES ARE MEASURED AT RIGHT ANGLES TO SECTION LINES.
2. BASIS OF BEARING: GEODETIC- BASED ON GPS OBSERVATIONS.
3. ELEVATIONS BASED ON GPS OBSERVATIONS, NAVD 88 (GEOID 03), POST PROCESSED USING NGS OPUS.
4. THE BOTTOM HOLE BEARS N10°00'00"W, 2179' FROM TOP OF HOLE.
5. SEE ADDENDUM TO LEGAL PLAT (SHEET 1C) FOR VISIBLE IMPROVEMENTS WITHIN 400 FEET OF THE PROPOSED OIL & GAS LOCATION.
6. CONTROL FOR SURVEY WAS ESTABLISHED USING DIFFERENTIALLY CORRECTED GPS FROM AN OPUS BASED CONTROL NETWORK. WELL LOCATION WAS ESTABLISHED USING NON-GPS CONVENTIONAL METHODS, THEREFORE NO PDOP READING WAS TAKEN.

MAP to ACCOMPANY

APPLICATION for PERMIT to DRILL
EnCana Oil & Gas (USA) Inc.
Orchard Unit 28-6 (E28OU) Well

SW1/4 NW1/4, SECTION 28

T8S, R96W, 6th P.M.

MESA COUNTY, COLORADO

Location Plat		Scale: 1" = 1000'	SHEET 1a OF 10
Project No.	09-04-22	Date Surveyed: 4/07/09	
Date Drawn:	1/07/10	Latest Revision Date:	

T8S, R96W, 6th P.M.

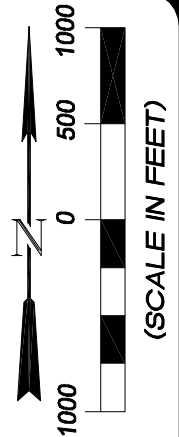
2007 BLM
Brass Cap

N88°44'41"E, 2746.47'

2007 BLM
Brass Cap

N88°44'44"E, 2746.91'

2007 BLM
Brass Cap



N00°08'25"E, 2668.04'

2562'

NW 1/4

NE 1/4

ORCHARD UNIT 28-7 (E28OU) WELL:
ELEV. UNGRADED GROUND = 5670.6'

28

196'

Top of Hole

Alum. Cap
PLS 37075

LEGEND

- SECTION CORNER LOCATED
- SURFACE LOCATION
- BOTTOM HOLE LOCATION
- RECORD LOCATION OF CORNER

N00°07'54"E, 2668.17'

SW 1/4

SE 1/4

579'

Bottom of Hole

1965 BLM
Brass Cap

634'

S89°45'06"E, 2643.96'
(Rotated BLM Record- See Note No. 7)

Calculated
Corner
(See Note 7)

NOTES

1. WELL FOOTAGES ARE MEASURED AT RIGHT ANGLES TO SECTION LINES.
2. BASIS OF BEARING: GEODETIC- BASED ON GPS OBSERVATIONS.
3. ELEVATIONS BASED ON GPS OBSERVATIONS, NAVD 88 (GEOID 03), POST PROCESSED USING NGS OPUS.
4. THE BOTTOM HOLE BEARS S10°00'00"E, 2179' FROM TOP OF HOLE.
5. SEE ADDENDUM TO LEGAL PLAT (SHEET 1C) FOR VISIBLE IMPROVEMENTS WITHIN 400 FEET OF THE PROPOSED OIL & GAS LOCATION.
6. CONTROL FOR SURVEY WAS ESTABLISHED USING DIFFERENTIALLY CORRECTED GPS FROM AN OPUS BASED CONTROL NETWORK. WELL LOCATION WAS ESTABLISHED USING NON-GPS CONVENTIONAL METHODS, THEREFORE NO PDOP READING WAS TAKEN.
7. PRESENT CONDITIONS DO NOT PERMIT FOR A DILIGENT SEARCH OF THE S1/4 OF SECTION 28. WHEN CONDITIONS IMPROVE, A THOROUGH SEARCH FOR THIS MONUMENT WILL BE CONDUCTED AND AN AMENDED PLAT WILL BE FILED.

ORCHARD UNIT 28-7 WELL (E28OU)
(WELLHEAD LOCATION) NAD 83
LATITUDE = 39.32077° N
LONGITUDE = 108.12221° W
(BOTTOM HOLE LOCATION) NAD 83
LATITUDE = 39.31488° N
LONGITUDE = 108.12084° W

CERTIFICATE OF SURVEYOR

I, TED TAGGART OF FRUITA, COLORADO HEREBY CERTIFY THAT THIS MAP WAS MADE FROM NOTES TAKEN DURING AN ACTUAL SURVEY MADE BY ME OR UNDER MY DIRECTION FOR ENCANA OIL & GAS (USA) INC. AND THAT THIS LOCATION HAS BEEN STAKED ON THE GROUND AS SHOWN HEREON.



906 Main Street
Evanston, Wyoming 82930
Phone No. (307) 789-4545



MAP to ACCOMPANY
APPLICATION for PERMIT to DRILL
EnCana Oil & Gas (USA) Inc.
Orchard Unit 28-7 (E28OU) Well

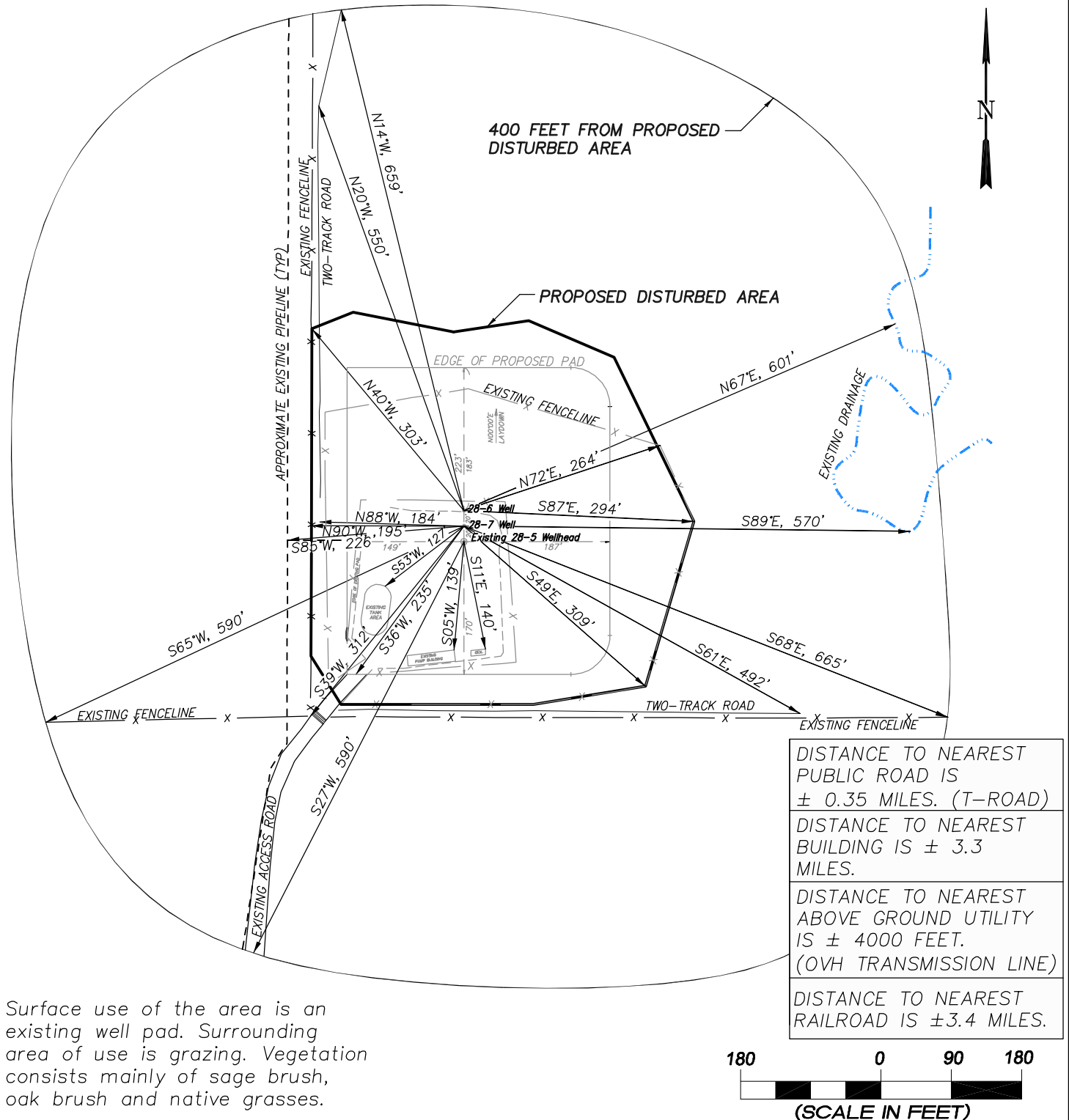
SW1/4 NW1/4, SECTION 28

T8S, R96W, 6th P.M.

MESA COUNTY, COLORADO

Location Plat		Scale: 1" = 1000'	SHEET 1b OF 10
Project No.	09-04-22	Date Surveyed: 4/07/09	
Date Drawn:	1/07/10	Latest Revision Date:	

EnCana Oil & Gas (USA) Inc.
ADDENDUM TO LEGAL PLATS FOR
E28OU Well Pad
SECTION 28, T 8 S, R 96 W, 6th P.M.



Surface use of the area is an existing well pad. Surrounding area of use is grazing. Vegetation consists mainly of sage brush, oak brush and native grasses.



906 Main Street
 Evanston, Wyoming 82930
 Phone No. (307) 789-4545

Addendum		Scale: 1" = 180'	SHEET 1c OF 10
Project No.	09-04-22	Date Surveyed: 4/07/09	
Date Drawn:	1/07/10	Latest Revision Date:	

EnCana Oil & Gas (USA) Inc.
Well Pad (E28OU)
Section 28, T8S, R96W, 6th P.M.
WELL PAD INTERFERENCE PLAT

RELATIVE COORDINATES From top hole to bottom hole		
WELL	NORTH	EAST
28-6	2146	-378
28-7	-2146	378

LATITUDE & LONGITUDE Surface position of Wellheads (NAD 83)		
WELL	LATITUDE	LONGITUDE
28-6	39.32082°	108.12221°
28-7	39.32077°	108.12221°

TOP HOLE FOOTAGES

ORCHARD UNIT 28-6 (E28OU)

2542' FNL & 196' FWL

ORCHARD UNIT 28-7 (E28OU)

2562' FNL & 196' FWL

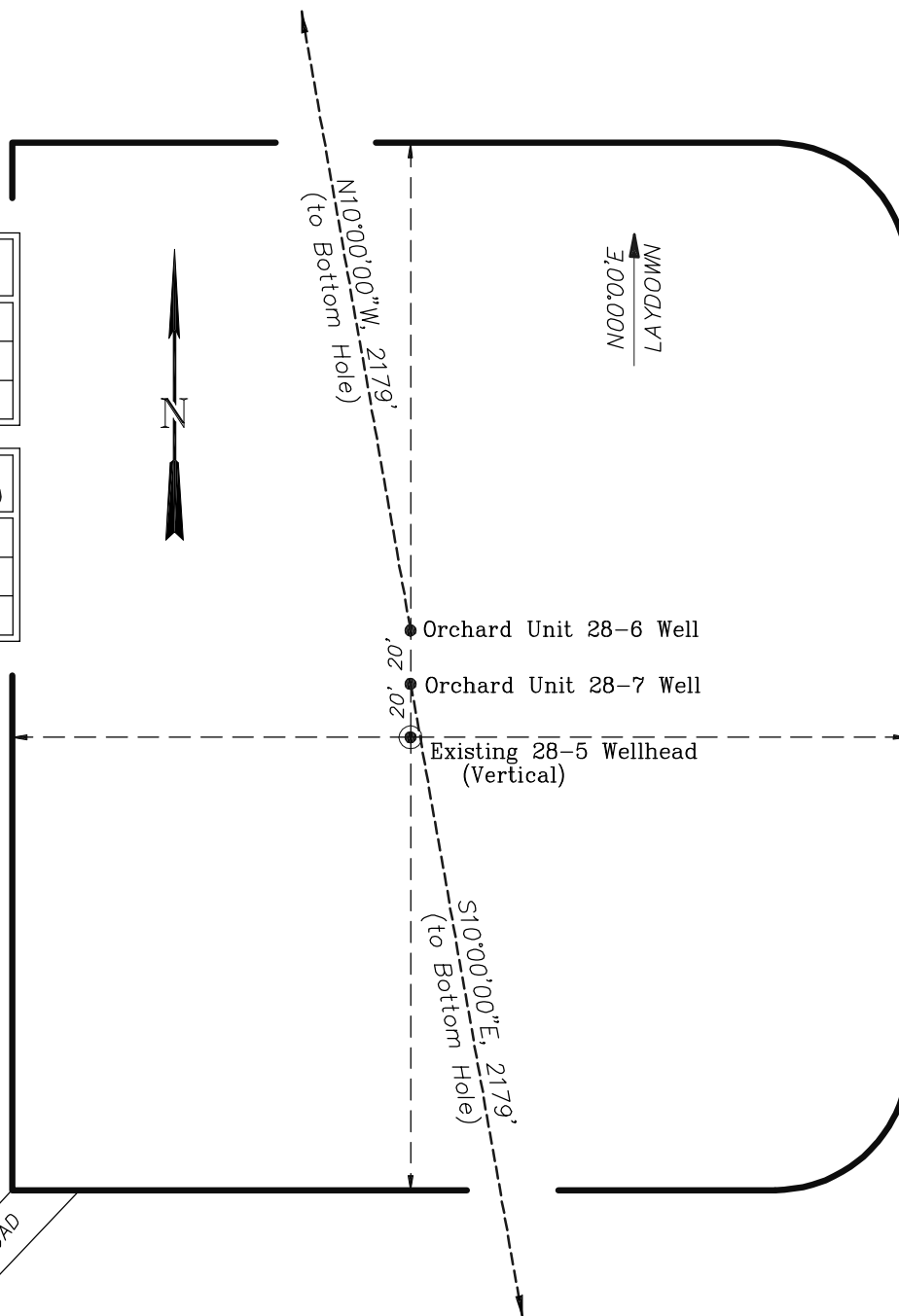
BOTTOM HOLE FOOTAGES

ORCHARD UNIT 28-6 (E28OU)

399' FNL & 188' FEL SEC. 29

ORCHARD UNIT 28-7 (E28OU)

634' FSL & 579' FWL SEC. 28



70 0 35 70
 (SCALE IN FEET)



906 Main Street
 Evanston, Wyoming 82930
 Phone No. (307) 789-4545

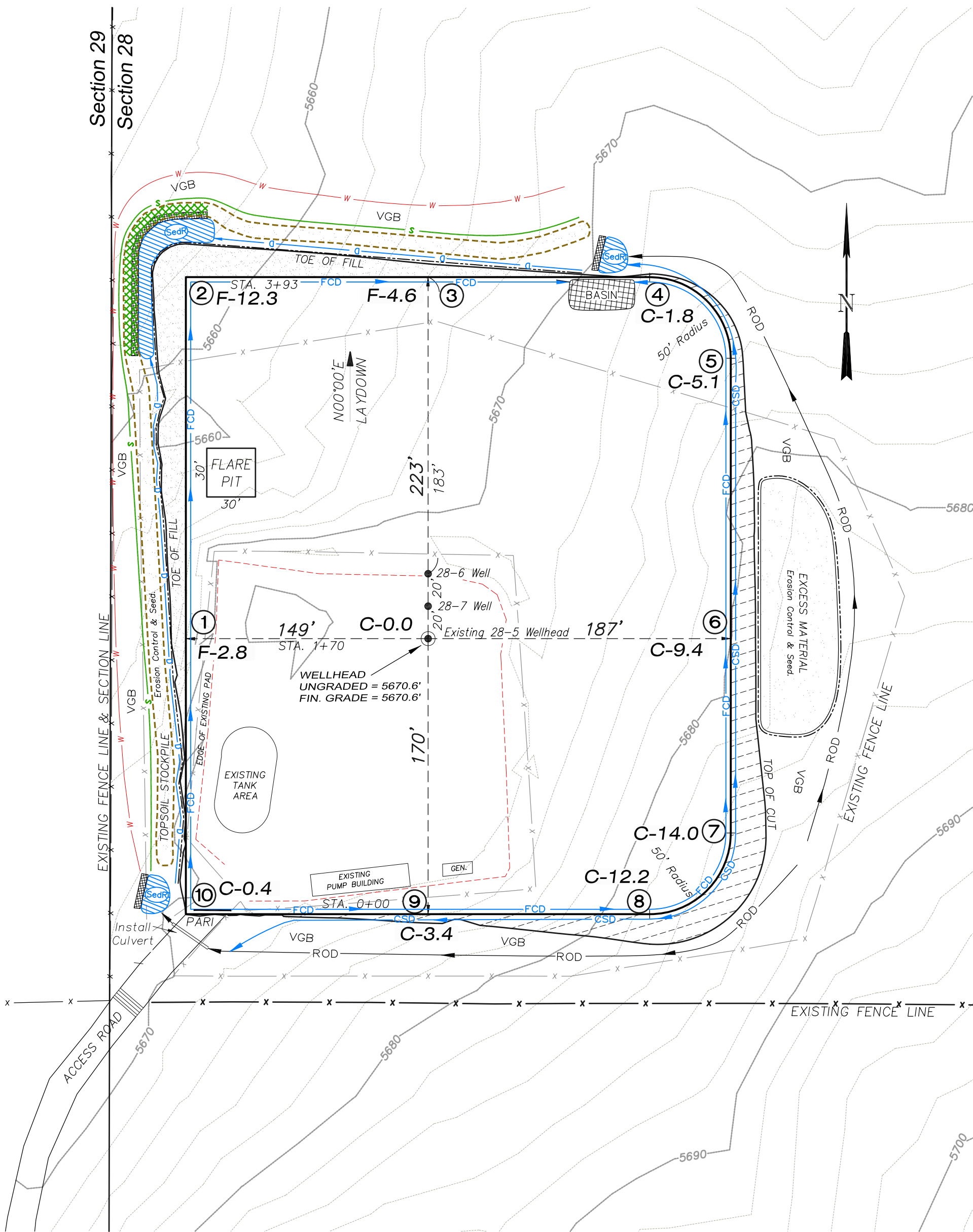
Interference Plat		Scale: 1" = 70'		SHEET 2 OF 10
Project No.	09-04-22	Date Surveyed:	4/07/09	
Date Drawn:	1/07/10	Latest Revision Date:		

EnCana Oil & Gas (USA) Inc.

E28OU Well Pad

SECTION 28, T 8 S, R 96 W, 6th P.M.

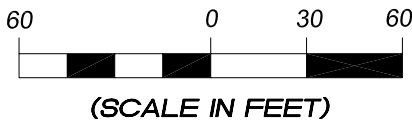
WELL PAD LAYOUT



Total Surface Disturbance = 4.82 Acres
(See Sheet 4 for Details)

- NOTES;
- (1) Slope Track and/or Terrace all Slopes and Piles
 - (2) Erosion Control & Seed Topsoil
 - (3) Erosion Control & Seed Outside
 - (4) Slope away from Substructure Areas 1% to 3% to Flow Control

- LEGEND
- PARI = PAD/ACCESS ROAD INTERFACE
 - SedR = SEDIMENT RESERVOIR
 - ST = SEDIMENT TRAP
 - R.O.D. = RUN-ON DIVERSION
 - W- = PERIMETER CONTROL (WATTLES)
 - CSD = CUT SLOPE DIVERSION (BERM TOE OF CUT SLOPE)
 - D = FILL DIVERSION TO SEDIMENT TRAP
 - VGB = VEGETATION BUFFER (UNDISTURBED LAND INSIDE PC)
 - FCD = FLOW CONTROL DITCH
 - SL- = SLASH
 - [Pattern] = LEVEL SPREADER
 - [Pattern] = TOE BERM (PLACED AT TOE OF ALL FILL SLOPES/STOCKPILES)
 - [Pattern] = TOPSOIL BERM
 - [Pattern] = SEED, ECB & FLEX
 - [Pattern] = SEED



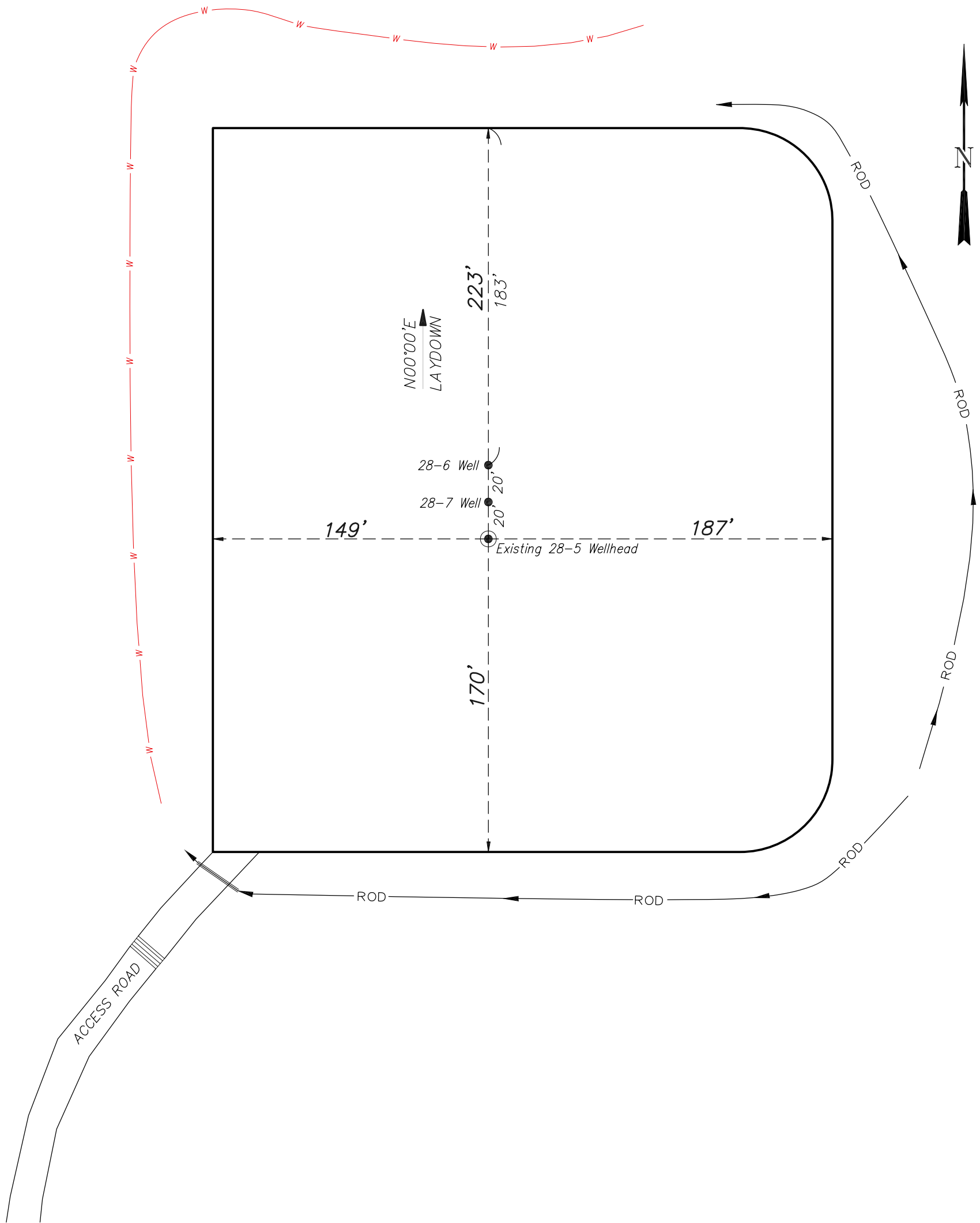
(SCALE IN FEET)



906 Main Street
Evanston, Wyoming 82930
Phone No. (307) 789-4545

Well Pad Layout		Scale: 1" = 60'	SHEET 3 OF 10
Project No.	09-04-22	Date Surveyed: 4/07/09	
Date Drawn:	1/07/10	Latest Revision Date:	

EnCana Oil & Gas (USA) Inc.
E28OU Well Pad
SECTION 28, T 8 S, R 96 W, 6th P.M.
PRE-CONSTRUCTION PLAT



Total Surface Disturbance = 4.82 Acres
(See Sheet 4 for Details)

- NOTES;
- (1) Slope Track and/or Terrace all Slopes and Piles
 - (2) Erosion Control & Seed Topsoil
 - (3) Erosion Control & Seed Outside
 - (4) Slope away from Substructure Areas 1% to 3% to Flow Control

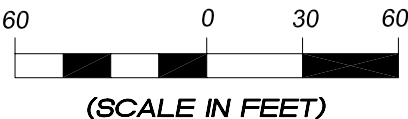
- LEGEND
- PARI = PAD/ACCESS ROAD INTERFACE
 - SedR = SEDIMENT RESERVOIR
 - ST = SEDIMENT TRAP
 - R.O.D.= RUN-ON DIVERSION
 - W- = PERIMETER CONTROL (WATTLES)
 - CSD = CUT SLOPE DIVERSION (BERM TOE OF CUT SLOPE)
 - D = FILL DIVERSION TO SEDIMENT TRAP
 - VGB = VEGETATION BUFFER (UNDISTURBED LAND INSIDE PC)
 - FCD = FLOW CONTROL DITCH
 - SL- = SLASH
 - [Pattern] = LEVEL SPREADER
 - [Pattern] = TOE BERM (PLACED AT TOE OF ALL FILL SLOPES/STOCKPILES)
 - [Pattern] = TOPSOIL BERM
 - [Pattern] = SEED, ECB & FLEX
 - [Pattern] = SEED

PRE-CONSTRUCTION PHASE COMPLETE,
AUTHORIZATION TO CONTINUE
CONSTRUCTION.

SIGNATURE: _____



906 Main Street
Evanston, Wyoming 82930
Phone No. (307) 789-4545

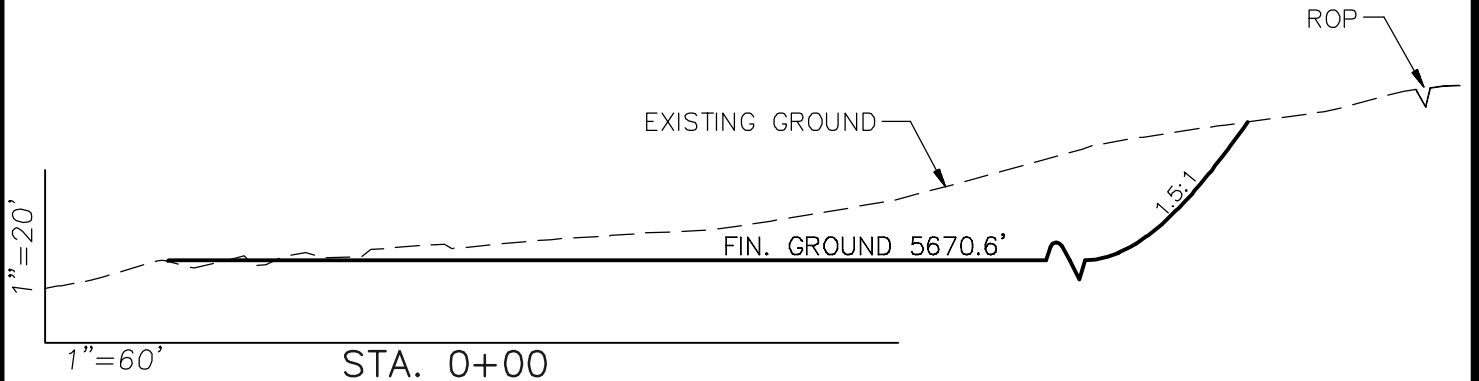
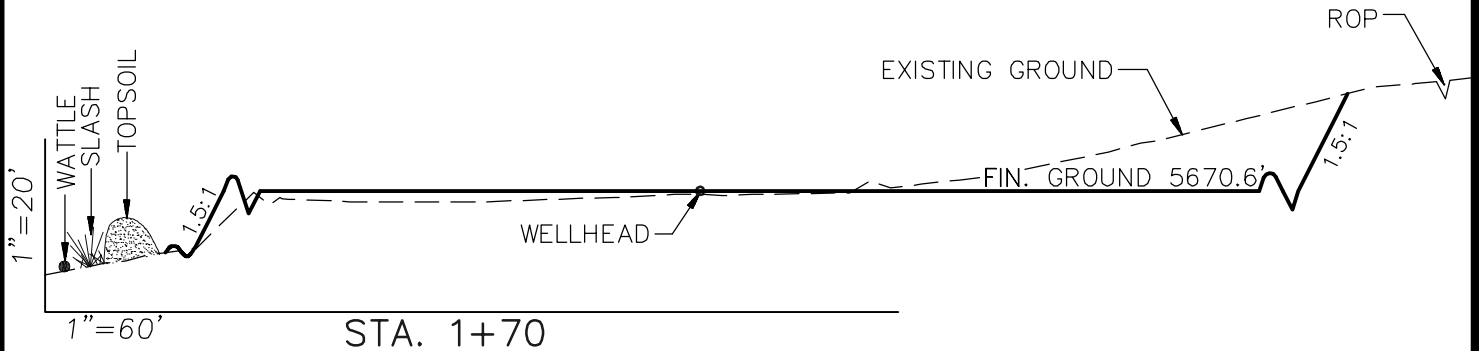
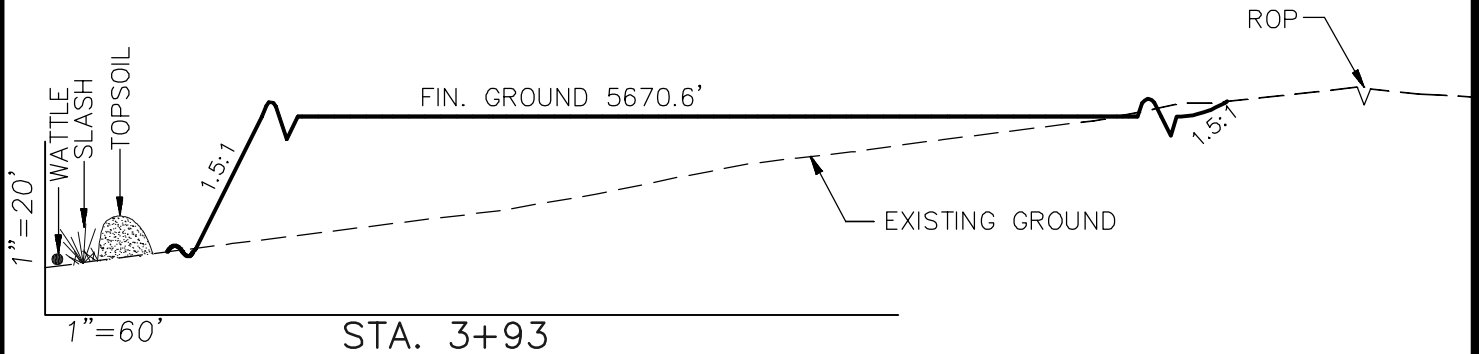


Pre-Construction		Scale: 1" = 60'	SHEET 3a OF 10
Project No.	09-04-22	Date Surveyed: 4/07/09	
Date Drawn:	1/07/10	Latest Revision Date:	

EnCana Oil & Gas (USA) Inc.

Well Pad (E28OU)

CROSS SECTIONS



SURFACE DISTURBANCE (IN ACRES)

Well Pad	3.0
Side Slopes	0.4
Topsoil & Waste Material	1.42
TOTAL	4.82

NOTE:
ALL CUT AND FILL
SLOPES ARE AT 1.5:1
UNLESS OTHERWISE
NOTED.

EARTHWORK QUANTITIES

(in Cubic Yards w/ 0% shrink/swell)

ITEM	CUT	FILL	6" TOPSOIL	EXCESS
PAD	9741	8993	Topsoil not included in Excavation	748
PIT	0	0		0
TOTALS	9741	8993	1750	748



906 Main Street
Evanston, Wyoming 82930
Phone No. (307) 789-4545

Cross Sections

Project No. 09-04-22
Date Drawn: 1/07/10

Scale: As Shown

Date Surveyed: 4/07/09
Latest Revision
Date:

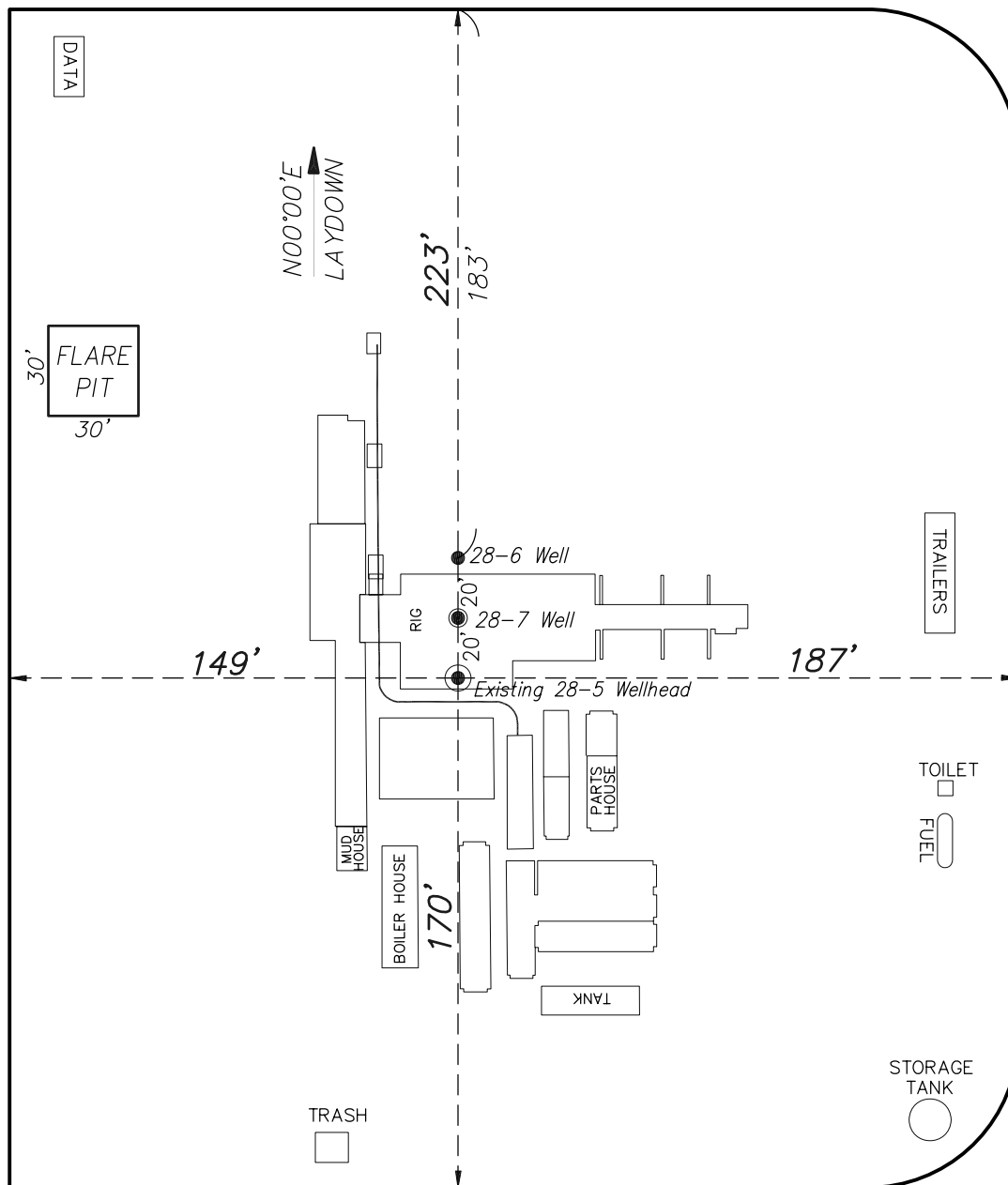
SHEET

4
OF 10

EnCana Oil & Gas (USA) Inc.

Well Pad (E28OU)

TYPICAL RIG LAYOUT



ACCESS ROAD



(SCALE IN FEET)



906 Main Street
Evanston, Wyoming 82930
Phone No. (307) 789-4545

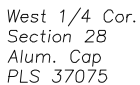
Rig Layout		Scale: 1" = 60'	SHEET 5 OF 10
Project No.	09-04-22	Date Surveyed: 4/07/09	
Date Drawn:	1/07/10	Latest Revision	
		Date:	

PRODUCTION SCHEMATIC



Production Schematic		Scale: 1" = 50'	SHEET 6 OF 10
Project No.	09-04-22	Date Surveyed: 4/07/09	
Date Drawn:	1/07/10	Latest Revision Date:	

Northwest Cor
Section 28
2007 BLM
Brass Cap

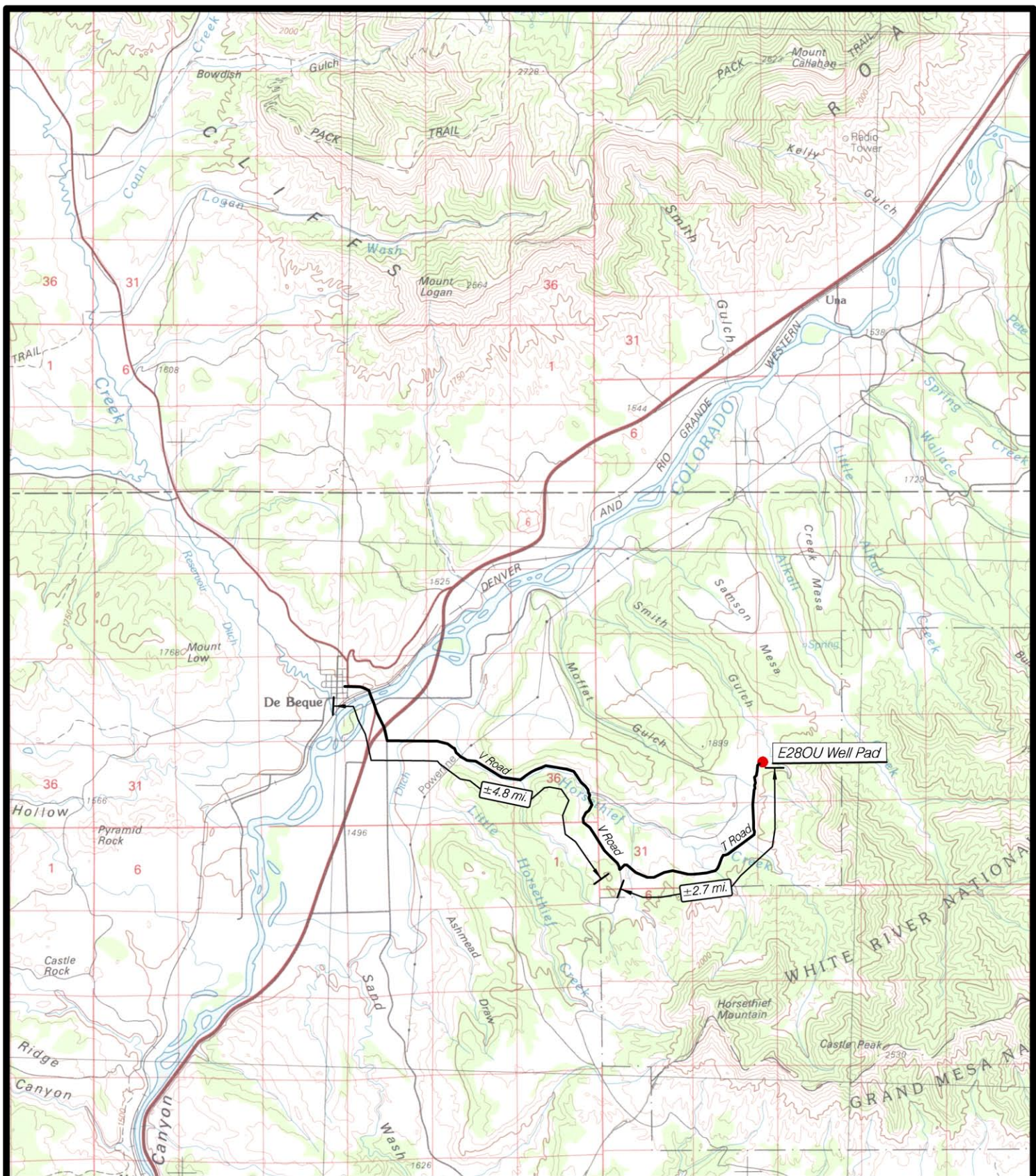


Southwest
Section 28
1965 BLM
Brass Cap



**906 Main Street
Evanston, Wyoming 82930
Phone No. (307) 789-4545**

Surface Disturbance		Scale: 1" = 80'	SHEET 7 OF 10
Project No.	09-04-22	Date Surveyed: 4/07/09	
Date Drawn:	1/07/10	Latest Revision Date:	



EnCana Oil & Gas (USA) Inc.

E28OU Well Pad

Section 28, T8S, R96W, 6th P.M.

Mesa County, Colorado



906 Main Street
Evanston, Wyoming 82930
Phone No. (307) 789-4545

DATE: Jan. 7, 2010

SCALE: 1 : 100,000

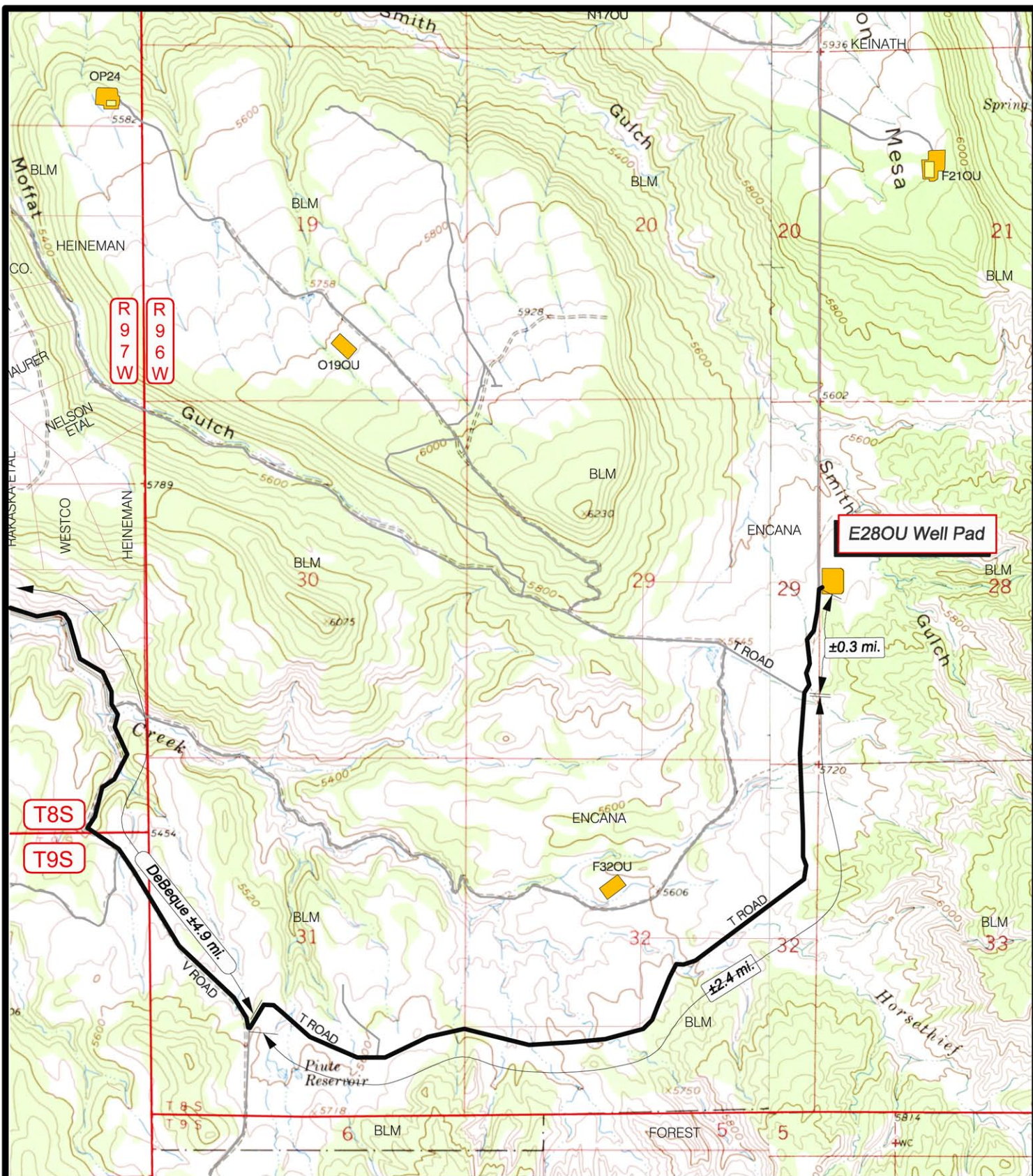
PROJECT NO.: 09-04-22

—LEGEND—

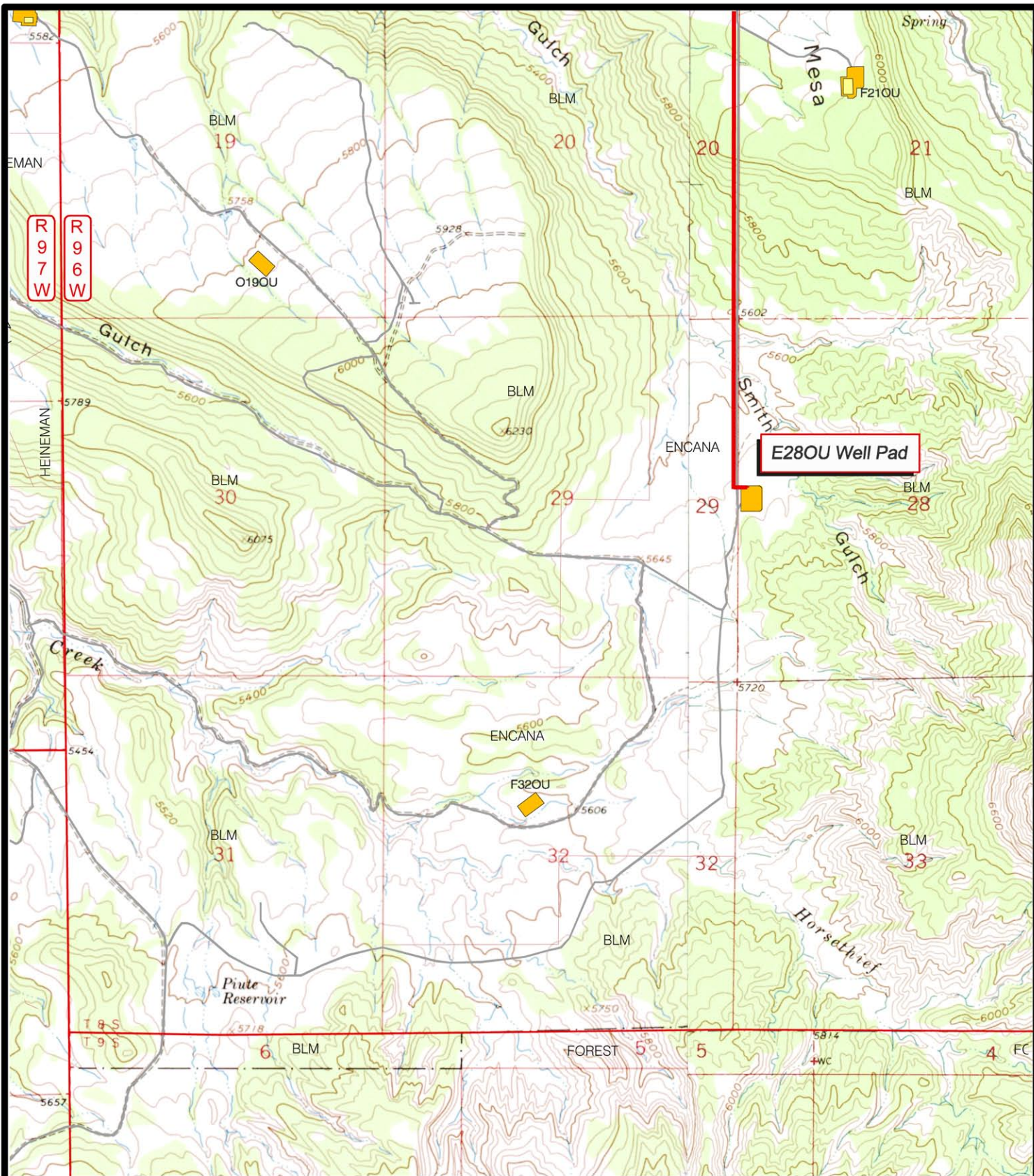
— Existing Road

**Topo
"A"**

**SHEET
8
OF 10**

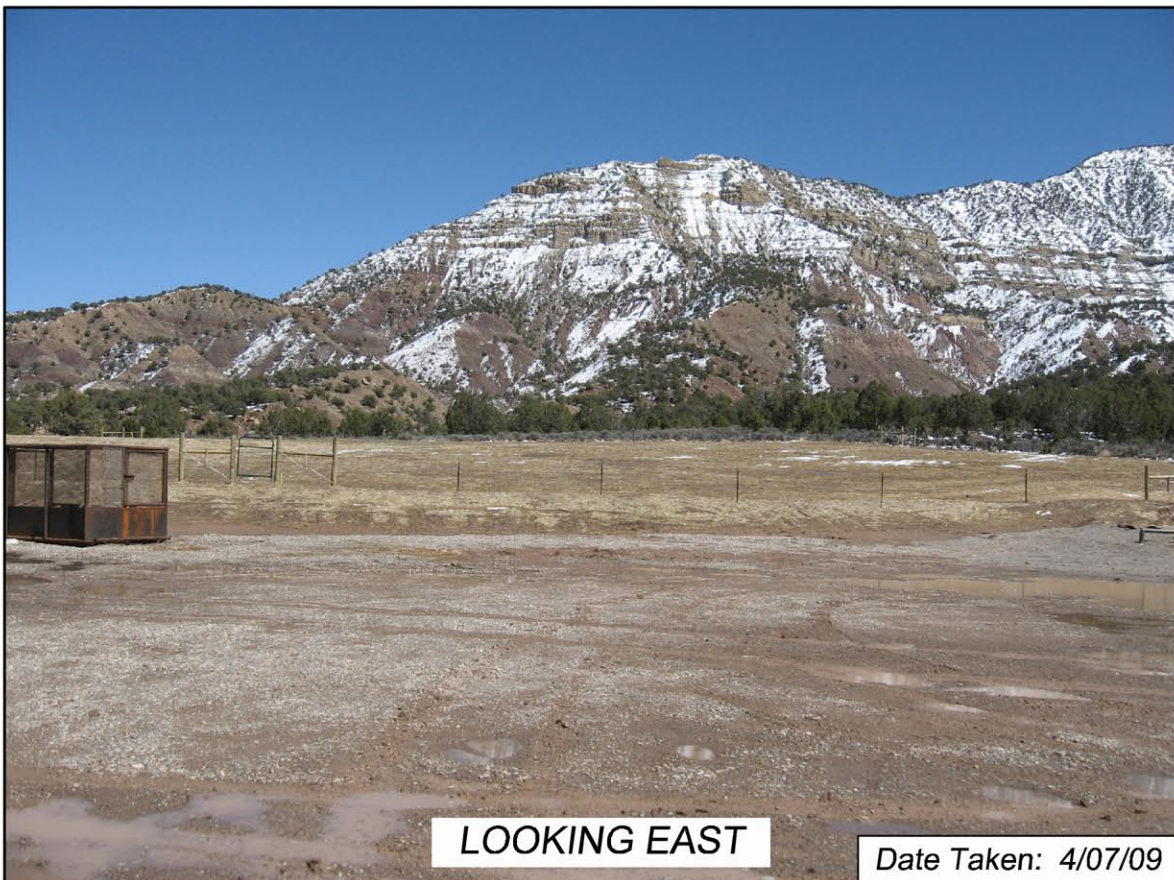
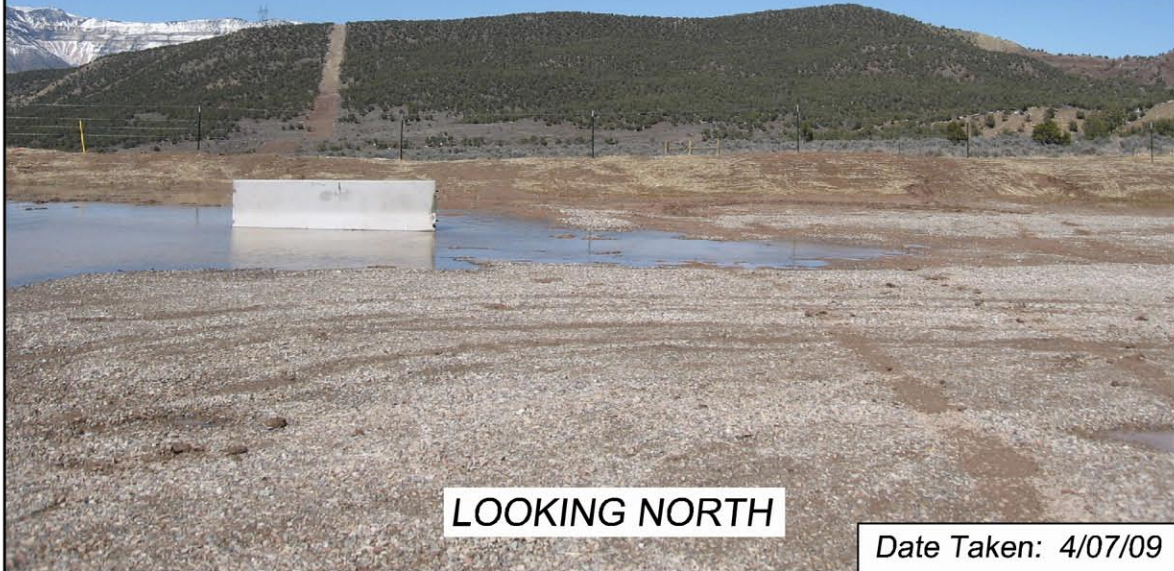


<p>(SCALE IN FEET)</p>	<h1>EnCana Oil & Gas (USA) Inc.</h1> <h2>E28OU Well Pad</h2> <h3>Section 28, T8S, R96W, 6th P.M.</h3> <h3>Mesa County, Colorado</h3>		<p>906 Main Street Evanston, Wyoming 82930 Phone No. (307) 789-4545</p>	<p>—LEGEND—</p> <p>Existing Road</p>	
	<p>DATE: June 17, 2009</p>			<p>Topo "B"</p>	<p>SHEET 9 OF 10</p>
	<p>SCALE: 1" = 2000'</p>				
	<p>PROJECT NO.: 09-04-22</p>				



<p>(SCALE IN FEET)</p>	<h1>EnCana Oil & Gas (USA) Inc.</h1> <h2>E28OU Pipeline</h2> <h3>Section 28, T8S, R96W, 6th P.M.</h3> <h3>Mesa County, Colorado</h3>		<p>906 Main Street Evanston, Wyoming 82930 Phone No. (307) 789-4545</p>	<h4>—LEGEND—</h4> <p>Existing Road</p> <p>Existing Pipeline</p>	
	<p>DATE: June 17, 2009</p>			<h1>Topo "D"</h1>	<p>SHEET 10 OF 10</p>
	<p>SCALE: 1" = 2000'</p>				
	<p>PROJECT NO.: 09-04-22</p>				

EnCana Oil & Gas (USA) Inc.
E28OU Well Pad
Section 28, T8S, R96W, 6th P.M.



EnCana Oil & Gas (USA) Inc.
E28OU Well Pad
Section 28, T8S, R96W, 6th P.M.



EnCana Oil & Gas (USA) Inc.
E28OU Well Pad
Section 28, T8S, R96W, 6th P.M.

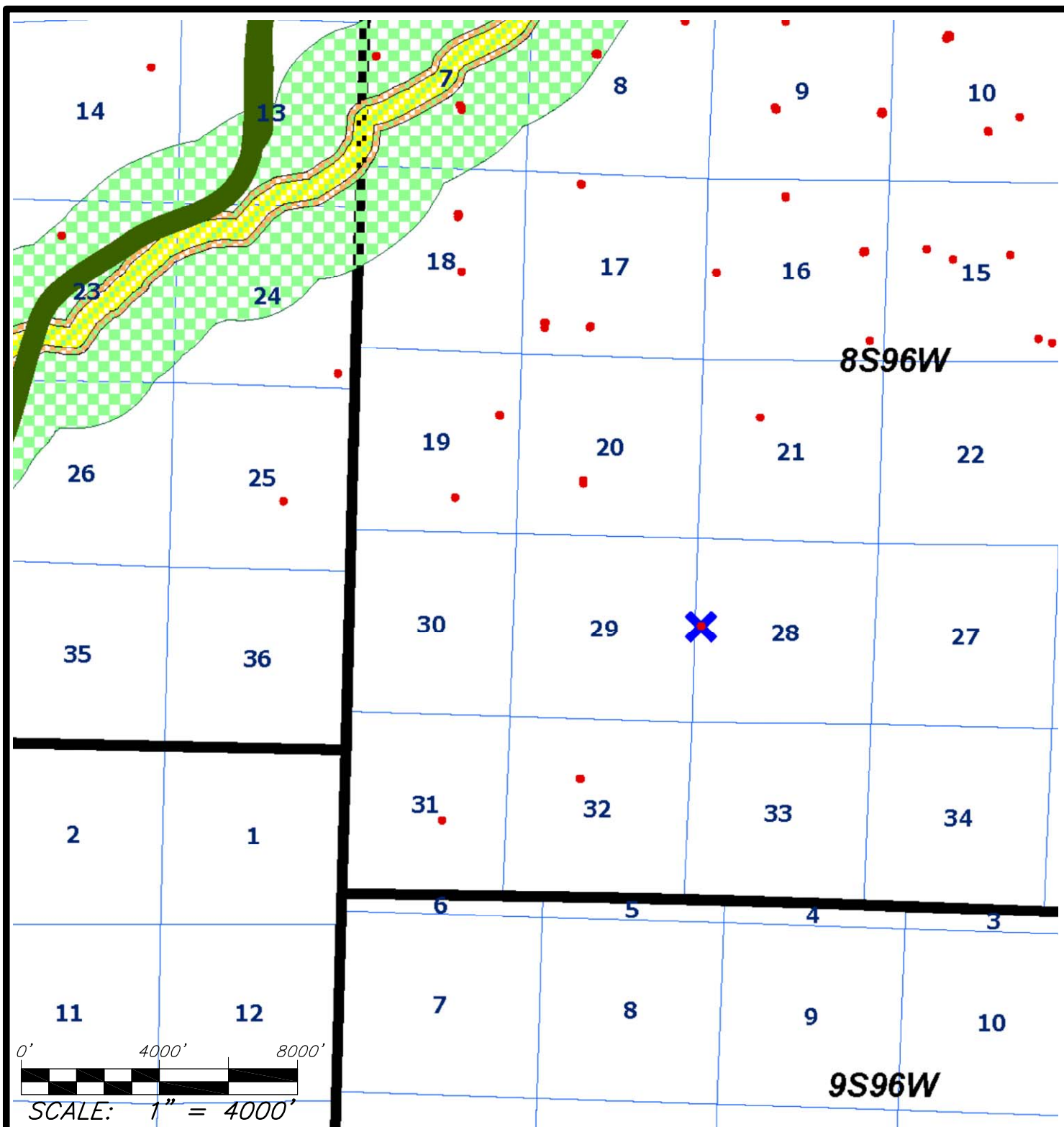


Date Taken: 4/07/09

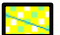




ACCESS ROAD
LOOKING SOUTHWEST

EnCana Oil & Gas (USA) Inc.
(Well Pad E28OU)
Driving Instructions

Beginning at the Town of DeBeque, Colorado:
Travel Southeasterly 4.8 miles on V Road to the intersection with T-Road;
then travel Easterly 2.7 miles to the existing **E28OU** well pad.



MAP LEGEND

-  INTERNAL BUFFER ZONE (0-300')
-  INTERMEDIATE BUFFER ZONE (301-500')
-  EXTERNAL BUFFER ZONE (501-2640')
-  PROPOSED WELL SITE
-  EXISTING WELL SITE



Wasatch Surveying Associates
 906 Main Street Evanston, Wyoming 82930
 Phone No. (307) 789-4545 Fax 307-789-5722



ENCANA OIL & GAS (USA) INC.

PUBLIC WATER SYSTEM PROTECTION MAP

FOR THE
 PROPOSED E28OU WELL PAD
 SECTION 28, T8S, R96W, 6th, P.M.
 MESA COUNTY, COLORADO

**RULE 317B
 EXHIBIT**

PROJECT NUMBER
 09-04-22
 DATE: 6/17/09
 SCALE: 1"=4000'

**SHEET
 1
 OF 1**