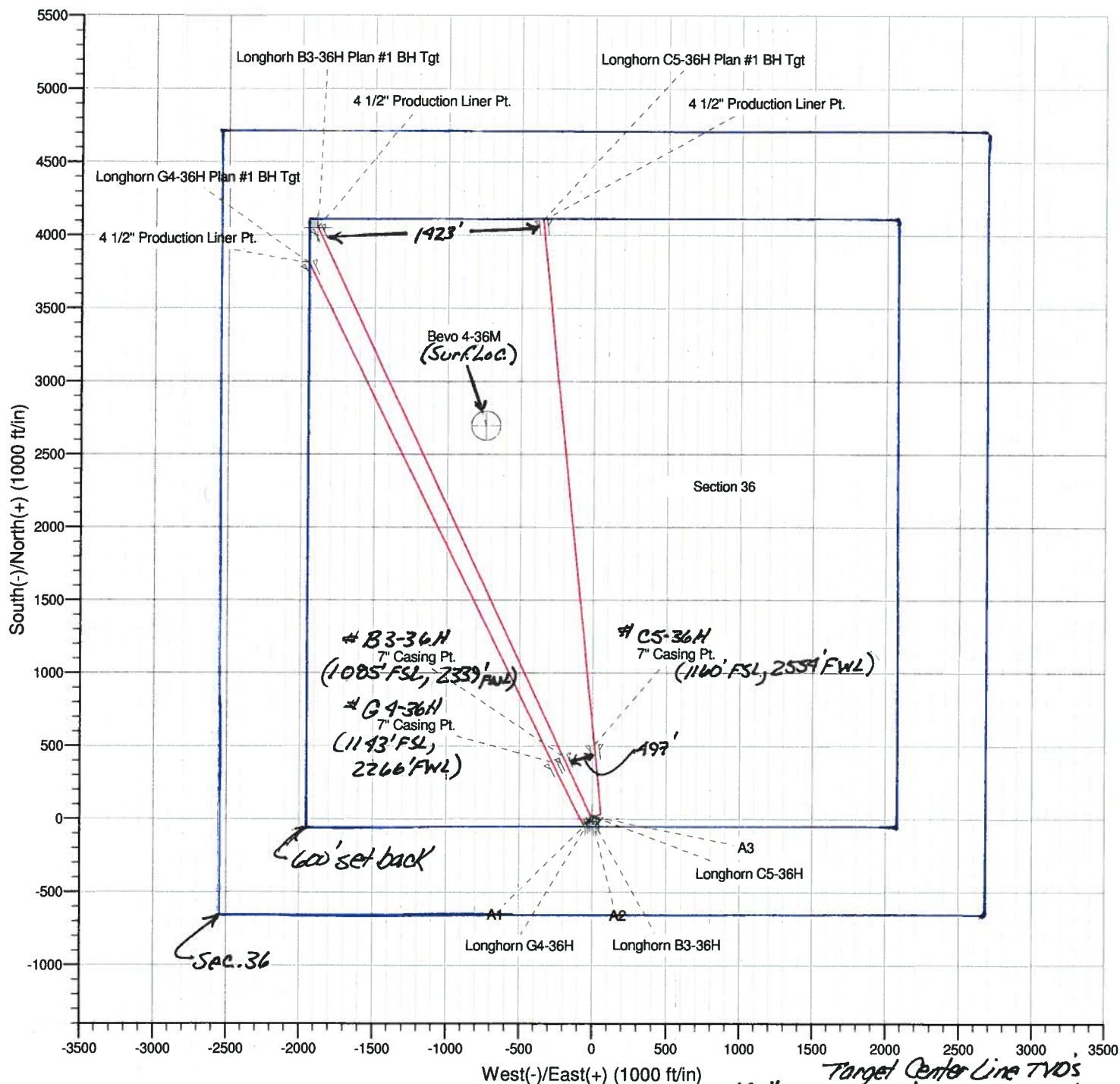


Project: Weld County, CO
 Site: Sec. 36-T12N-R63W
 Well: Longhorn Pad TD
 Wellbore: Plan #1
 Plan: Plan #1 Proposal

EOG Resources, Inc.

HALLIBURTON
 Sperry Drilling



Wellbore Center to Center Distances

#C5-36H Inter. Csg. Pt. to #B3-36H Inter. Csg. Pt. = 263'
 #B3-36H Inter. Csg. Pt. to #G4-36H Inter. Csg. Pt. = 997'
 #C5-36H BHL to #B3-36H BHL = 1423'
 #B3-36H BHL to #G5-36H BHL = 522'
 #C5-36H to Bevo 4-36M = 530'
 #B3-36H to Bevo 4-36M = 990'

Well	Target Line TVD @ 0° VS	Target Line TVD @ BHL
#G4-36H	7821'	7851'
#B3-36H	7332'	7353'
#C5-36H	7463'	7486'



Azimuths to True North
 Magnetic North: 8.81°

Magnetic Field
 Strength: 53600.5nT
 Dip Angle: 67.63°
 Date: 4/1/2010
 Model: BGGM2009

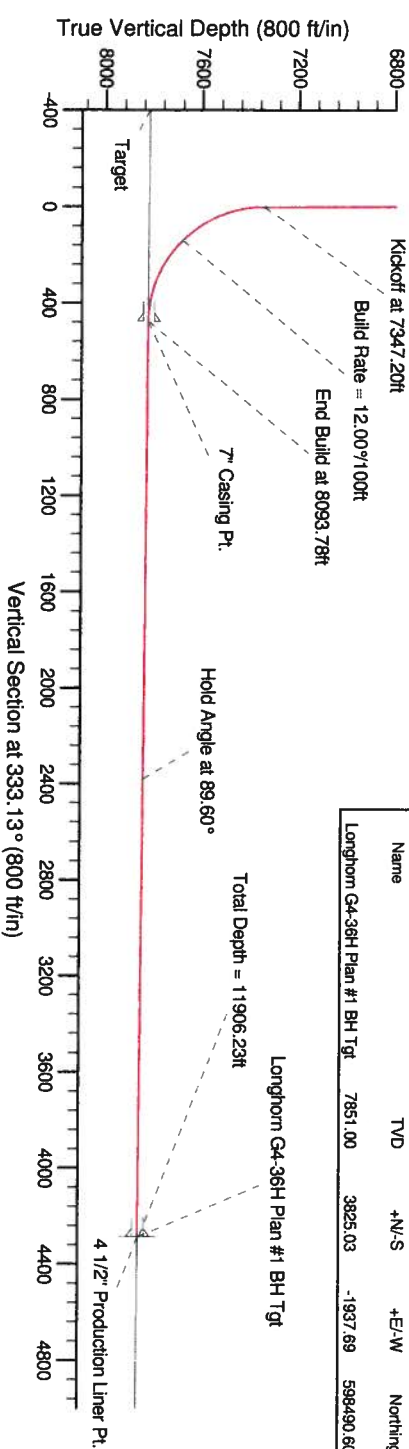
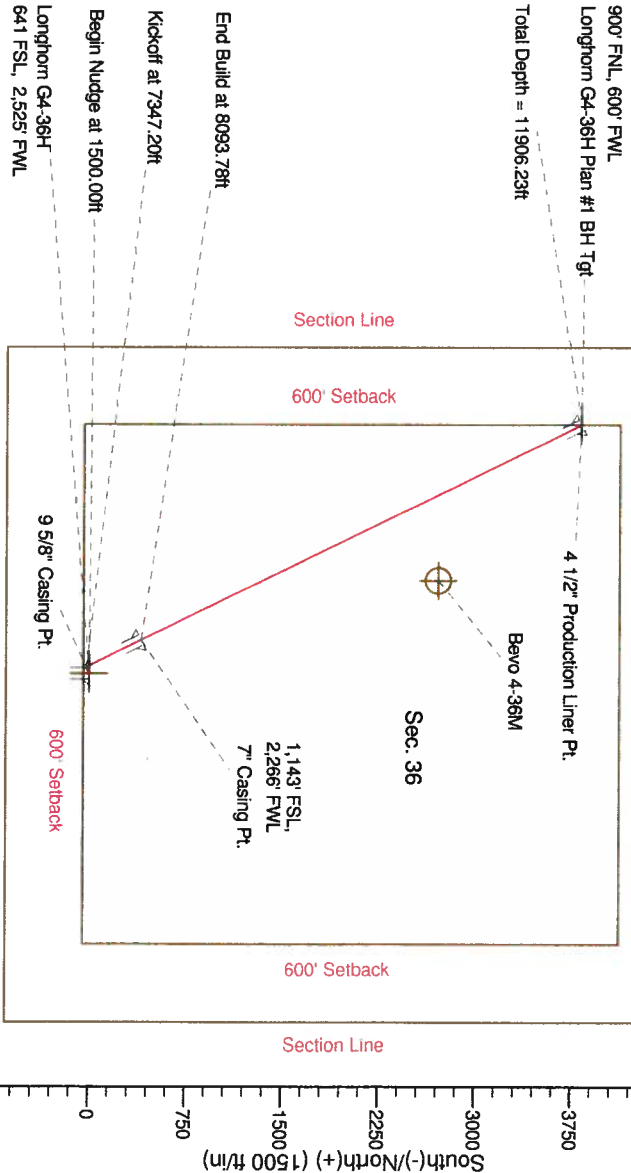
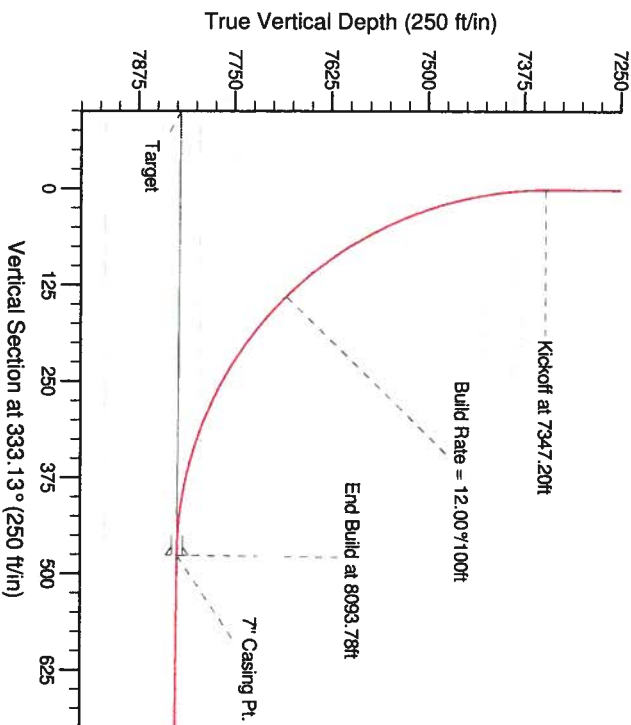
Project: Weld County, CO
Site: Sec. 36-T12N-R63W
Well: Longhorn G4-36H
Wellbore: Plan #1
Design: Plan #1 Proposal

EOG Resources, Inc.

HALLIBURTON
Sperry Drilling

SECTION DETAILS

Sec	MD	Inc	Azi	TVD	+N/S	+E/W	Dleg	TFace	VSec	Target
1	0.00	0.00	0.00	0.00	0.00	0.00	0.00	0.00	0.00	
2	1500.00	0.00	0.00	1500.00	0.00	0.00	0.00	0.00	0.01	
3	1550.00	0.50	0.00	1550.00	-0.09	0.00	1.00	245.00	1.65	
4	7347.20	0.50	245.00	7346.98	-21.47	-46.05	0.00	0.00	475.80	
5	8093.78	89.60	333.87	7824.33	402.38	-258.57	12.00	88.87	514.42	
6	8132.40	89.60	333.87	7824.80	437.05	-275.58	0.01	-110.81		
7	11906.23	89.60	333.87	7851.00	3825.03	-1937.69	0.00	0.00	4287.84	Longhorn G4-36H Plan #1 BH Tgt



WELLBORE TARGET DETAILS (MAP CO-ORDINATES AND LAT/LONG)									
Name	TVD	+N/S	+E/W	Northing	Easting	Latitude	Longitude	Shape	
Longhorn G4-36H Plan #1 BH Tgt	7851.00	3825.03	-1937.69	598490.60	2307059.65	40° 58' 15.457 N	104° 23' 17.263 W	Point	

WELL DETAILS: Longhorn G4-36H			
Northing	5343.00	Longitude	
594690.20	2309045.52	40° 57' 37.663 N	104° 22' 52.004 W

Plan: Plan #1 Proposal (Longhorn G4-36H/Plan #1)

Created By: Paul A. Bitzan Date: 02/10/2010

Checked: _____ Date: _____

Reviewed: _____ Date: _____

Approved: _____ Date: _____

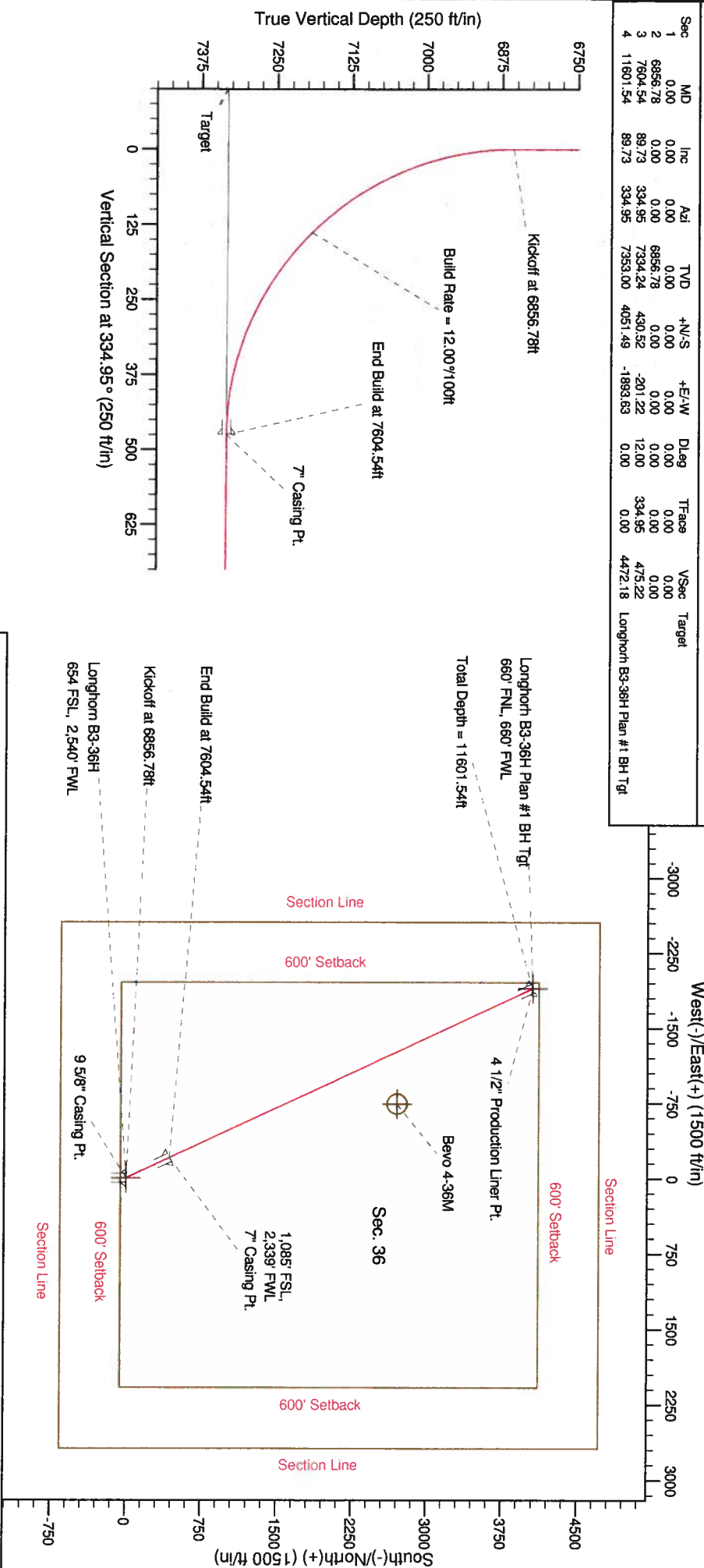
Project: Weld County, CO
Site: Sec. 36-T12N-R63W
Well: Longhorn B3-36H
Wellbore: Plan #1
Design: Plan #1 Proposal

EOG Resources, Inc.

HALLIBURTON
Sperry Drilling

SECTION DETAILS

Sec	MD	Inc	Azi	TVD	+N/S	+E/W	Dleg	TFace	VSec	Target
1	0.00	0.00	0.00	0.00	0.00	0.00	0.00	0.00	0.00	
2	6856.78	89.73	0.00	6856.78	430.52	0.00	0.00	0.00	475.22	
3	7604.54	89.73	334.95	7334.24	-201.22	12.00	334.95	0.00	4472.18	Longhorn B3-36H Plan #1 BH Tgt
4	11601.54	89.73	334.95	7353.00	4051.49	-1893.63	0.00	0.00		



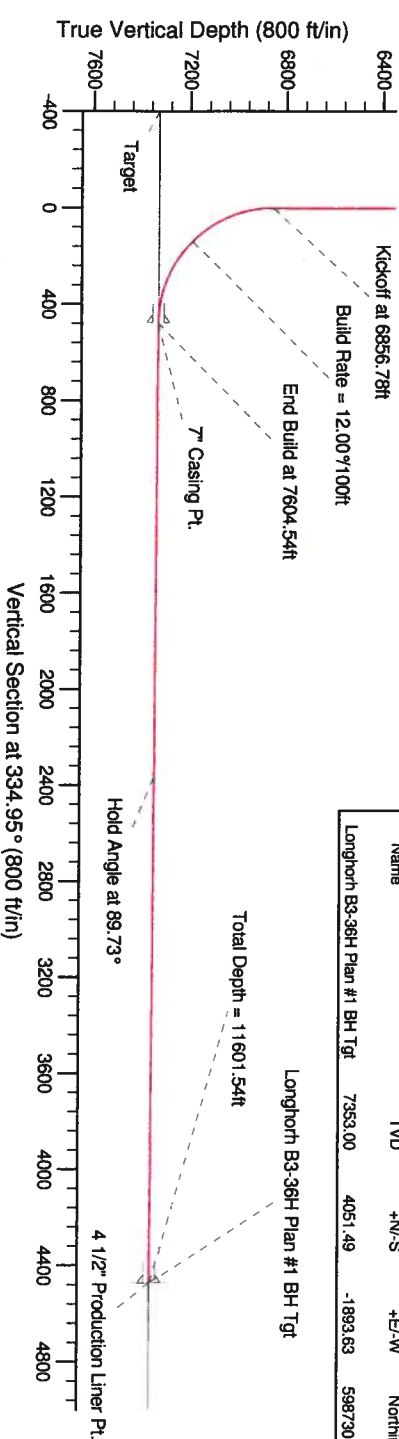
WELLBORE TARGET DETAILS (MAP CO-ORDINATES AND LAT/LONG)

Name	TVD	+N/S	+E/W	Northing	Easting	Latitude	Longitude	Shape
Longhorn B3-36H Plan #1 BH Tgt	7353.00	4051.49	-1893.63	598730.95	2307115.79	40°58'17.825 N	104°23'16.492 W	Point

Longhorn B3-36H Plan #1 BH Tgt

Total Depth = 11601.54ft

Hold Angle at 89.73°



WELL DETAILS: Longhorn B3-36H

Northing	5343.00	Longitude
Easting	2309060.45	Latitude
Ground Level:	594703.55	40°57'37.793 N
		104°22'51.807 W

Plan: Plan #1 Proposal (Longhorn B3-36H/Plan #1)

Created By: Paul A. Bitzan Date: 02/10/2010
Checked: Date: _____
Reviewed: Date: _____
Approved: Date: _____

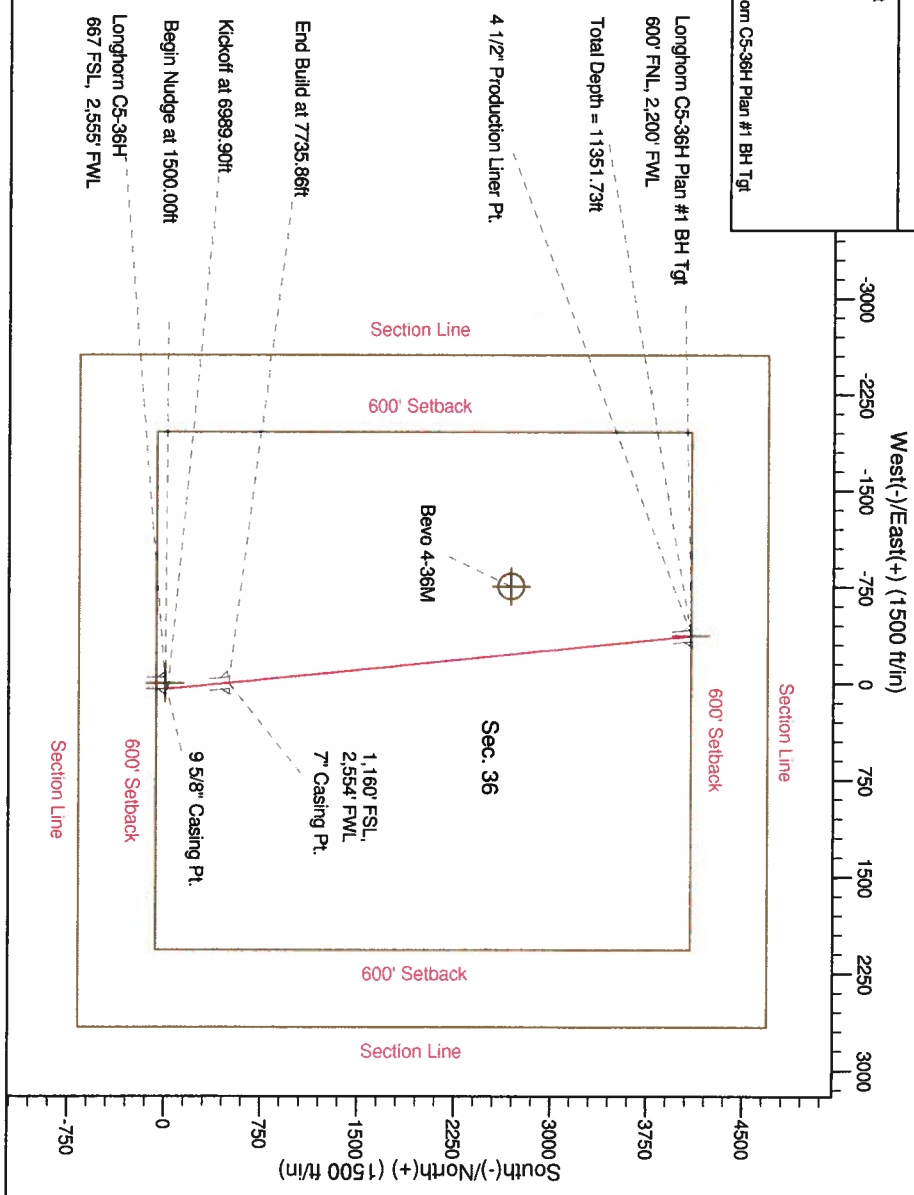
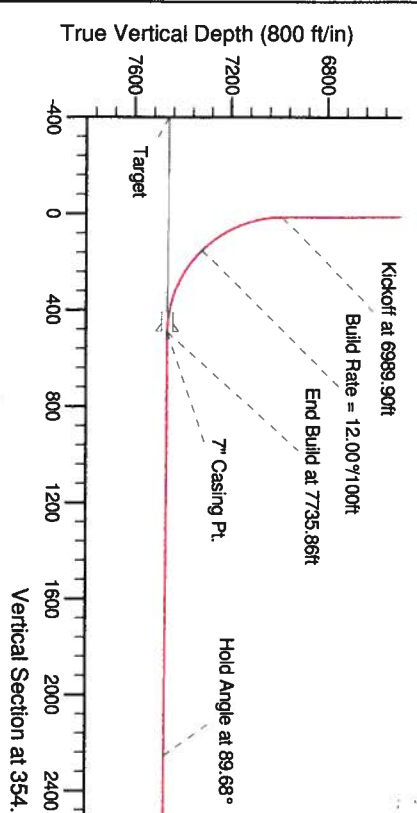
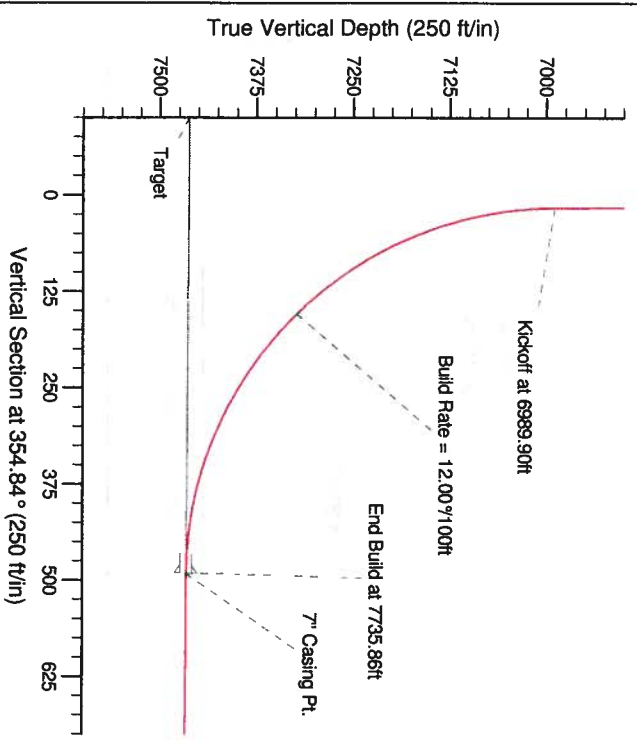
Project: Weld County, CO
Site: Sec. 36-T12N-R63W
Well: Longhorn C5-36H
Wellbore: Plan #1
Design: Plan #1 Proposal

EOG Resources, Inc.

HALLIBURTON
Sperry Drilling

SECTION DETAILS

Sec	MD	Inc	Azi	TVD	+N/S	+E/W	Dleg	TFace	VSec	Target
1	0.00	0.00	0.00	0.00	0.00	0.00	0.00	0.00	0.00	
2	1500.00	0.00	0.00	1500.00	0.00	0.00	0.00	0.00	0.00	
3	1550.00	0.50	0.00	1550.00	0.09	0.20	1.00	65.00	0.07	
4	6989.90	0.50	65.00	6989.89	20.15	43.22	0.00	16.19	0.00	
5	7735.86	89.88	354.16	7465.77	492.88	-1.21	12.00	-70.84	490.99	
6	7736.20	89.88	354.16	7465.77	493.22	-1.24	1.00	-93.73	491.33	
7	11351.73	89.88	354.16	7486.00	4089.90	-369.33	0.00	0.00	4106.55	Longhorn C5-36H Plan #1 BH Tgt



WELLBORE TARGET DETAILS (MAP CO-ORDINATES AND LAT/LONG)					
Name	TVD	+N/S	+E/W	Northing	Eastng
Longhorn C5-36H Plan #1 BH Tgt	7486.00	4089.90	-369.33	598801.94	2308654.50

WELL DETAILS: Longhorn C5-36H			
Northing	Ground Level:	5343.00	Longitude
594716.89	Eastng	2309075.43	Latitude
		40° 57' 37.923 N	104° 22' 56.424 W

Plan: Plan #1 Proposal (Longhorn C5-36H/Plan #1)

Created By: Paul A. Bitzan Date: 02/10/2010
Checked: _____ Date: _____
Reviewed: _____ Date: _____
Approved: _____ Date: _____