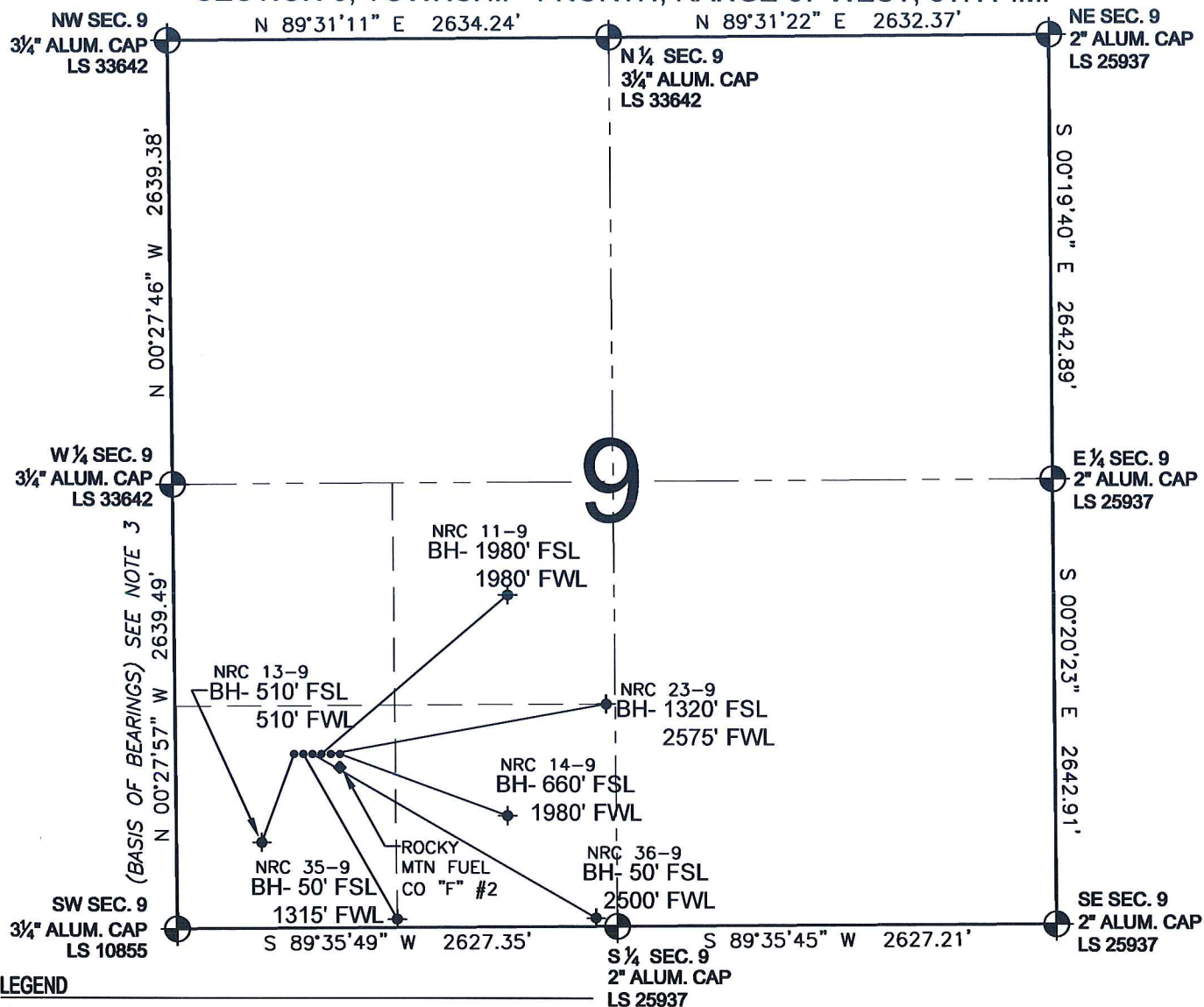


# PAD DRAWING - NRC 6 PAD

SECTION 9, TOWNSHIP 1 NORTH, RANGE 67 WEST, 6TH P.M.



## LEGEND

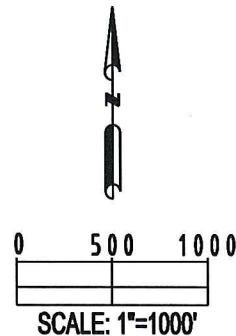
- = EXISTING MONUMENT   
 = BOTTOM HOLE   
 BH= BOTTOM HOLE  
 = PROPOSED WELL   
 = EXISTING WELL


## NOTES:

- THIS SURVEY WAS DONE BY GPS METHODS AND CONFORMS TO THE MINIMUM STANDARDS SET BY THE C.O.G.C.C., RULE NO. 215
- ELEVATIONS SHOWN AT THE WELL HEAD, AS WELL AS HORIZONTAL CONTROL, ARE BASED ON GPS-RTK VALUES DERIVED FROM DOING 2-HOUR STATIC GPS SESSIONS AND REDUCTIONS USING O.P.U.S. SOLUTIONS.  
VERTICAL = NAVD88; HORIZONTAL = NAD83/92
- THE BEARINGS SHOWN HEREON ARE BASED ON GPS OBSERVATIONS BETWEEN THE MONUMENTS SHOWN HEREON AS FOUND ON THE FIELD DATE BELOW.
- DISTANCES SHOWN ARE AT GROUND LEVEL, AS MEASURED IN THE FIELD, WITH TIES TO WELLS MEASURED AT A PERPENDICULAR TO SECTION LINES.

## NOTES:

NRC 13-9 TO BE AT 1031' FSL, 903' FWL.  
 BOTTOM HOLE AT 510' FSL & 510' FWL.  
 NRC 35-9 TO BE AT 1031' FSL, 919' FWL.  
 BOTTOM HOLE AT 50' FSL & 1315' FWL.  
 NRC 36-9 TO BE AT 1031' FSL, 935' FWL.  
 BOTTOM HOLE AT 50' FSL & 2500' FWL.  
 NRC 11-9 TO BE AT 1031' FSL, 951' FWL.  
 BOTTOM HOLE AT 1980' FSL & 1980' FWL.  
 NRC 23-9 TO BE AT 1031' FSL, 967' FWL.  
 BOTTOM HOLE AT 1320' FSL & 2575' FWL.  
 NRC 14-9 TO BE AT 1031' FSL, 983' FWL.  
 BOTTOM HOLE AT 660' FSL & 1980' FWL.  
 ROCKY MTN FUEL CO "F" #2 IS 982' FSL, 983' FWL.



REVISIONS		PREPARED BY:	 Petroleum Field Services, LLC 1801 W. 13th Ave. Denver, CO 80204
INITIAL	DATE		

KERR-MCGEE OIL & GAS ONSHORE LP

FIELD DATE:  
12-11-09

PAD NAME:  
NRC 6 PAD

DRAWING DATE:  
12-14-09

SURFACE LOCATION:

BY:  
SMF

WELD COUNTY, COLORADO  
SW 1/4 SW 1/4, SEC. 9, T1N, R67W