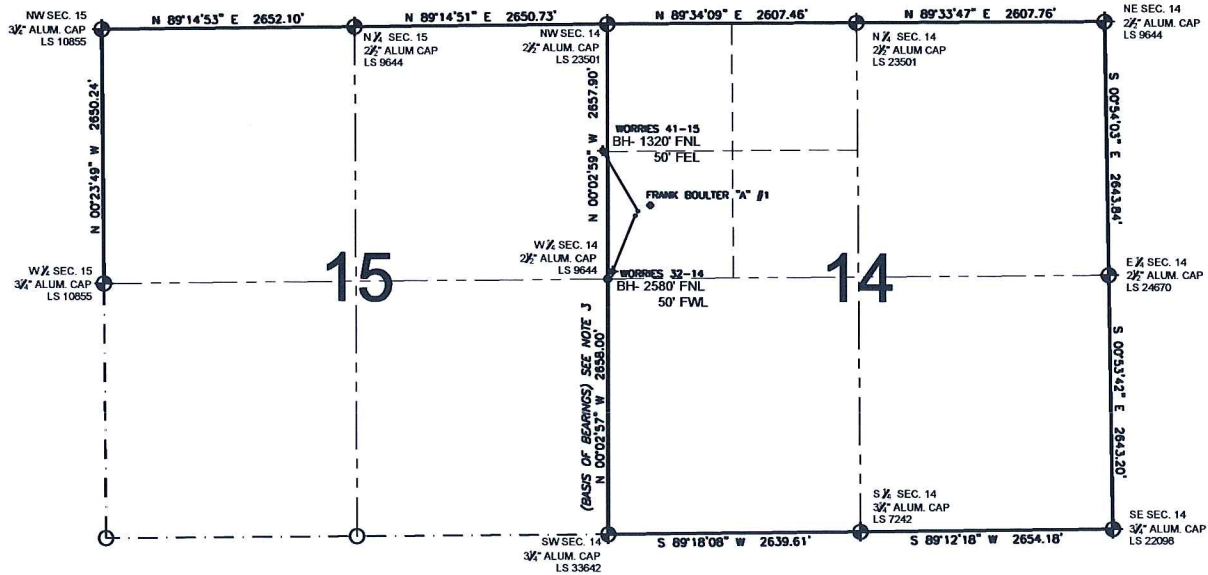


PAD DRAWING - WORRIES 2 PAD

SECTION 14, TOWNSHIP 4 NORTH, RANGE 65 WEST, 6TH P.M.



LEGEND

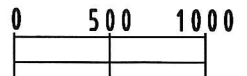
- = EXISTING MONUMENT
 = BOTTOM HOLE
 BH= BOTTOM HOLE
 = PROPOSED WELL
 = EXISTING WELL

NOTES:


- THIS SURVEY WAS DONE BY GPS METHODS AND CONFORMS TO THE MINIMUM STANDARDS SET BY THE C.O.G.C.C., RULE NO. 215 (PDOP VALUE IS LESS THAN 6.0, LATITUDE AND LONGITUDE ARE ACCURATE TO 5 DECIMAL PLACES, AND GPS OBSERVATIONS ARE DIFFERENTIAL AND DONE BY QUALIFIED PERSONNEL.)
- ELEVATIONS SHOWN AT THE WELL HEAD, AS WELL AS HORIZONTAL CONTROL, ARE BASED ON GPS-RTK VALUES DERIVED FROM DOING 2-HOUR STATIC GPS SESSIONS AND REDUCTIONS USING O.P.U.S. SOLUTIONS.
VERTICAL = NAVD88; HORIZONTAL = NAD83/92
- THE BEARINGS SHOWN HEREON ARE BASED ON GPS OBSERVATIONS BETWEEN THE MONUMENTS SHOWN HEREON AS FOUND ON THE FIELD DATE BELOW.
- DISTANCES SHOWN ARE AT GROUND LEVEL, AS MEASURED IN THE FIELD, WITH TIES TO WELLS MEASURED AT A PERPENDICULAR TO SECTION LINES.

NOTES:

WORRIES 32-14 TO BE AT 1964' FNL, 308' FWL.
 BOTTOM HOLE AT 2580' FNL & 50' FWL.
 WORRIES 41-15 TO BE AT 1952' FNL, 318' FWL.
 BOTTOM HOLE AT 1320' FNL & 50' FWL.
 FRANK BOULTER "A" #1 IS 1904' FNL, 507' FWL.



SCALE: 1"=1000'

REVISIONS		PREPARED BY:	 Petroleum Field Services, LLC 1801 W. 13th Ave. Denver, CO 80204
INITIAL	DATE		

KERR-MCGEE OIL & GAS ONSHORE LP

FIELD DATE:
12-11-09

PAD NAME:
WORRIES 2 PAD

DRAWING DATE:
12-16-09

SURFACE LOCATION:

BY:
SMF

WELD COUNTY, COLORADO
SW 1/4 NW 1/4, SEC. 14, T4N, R65W