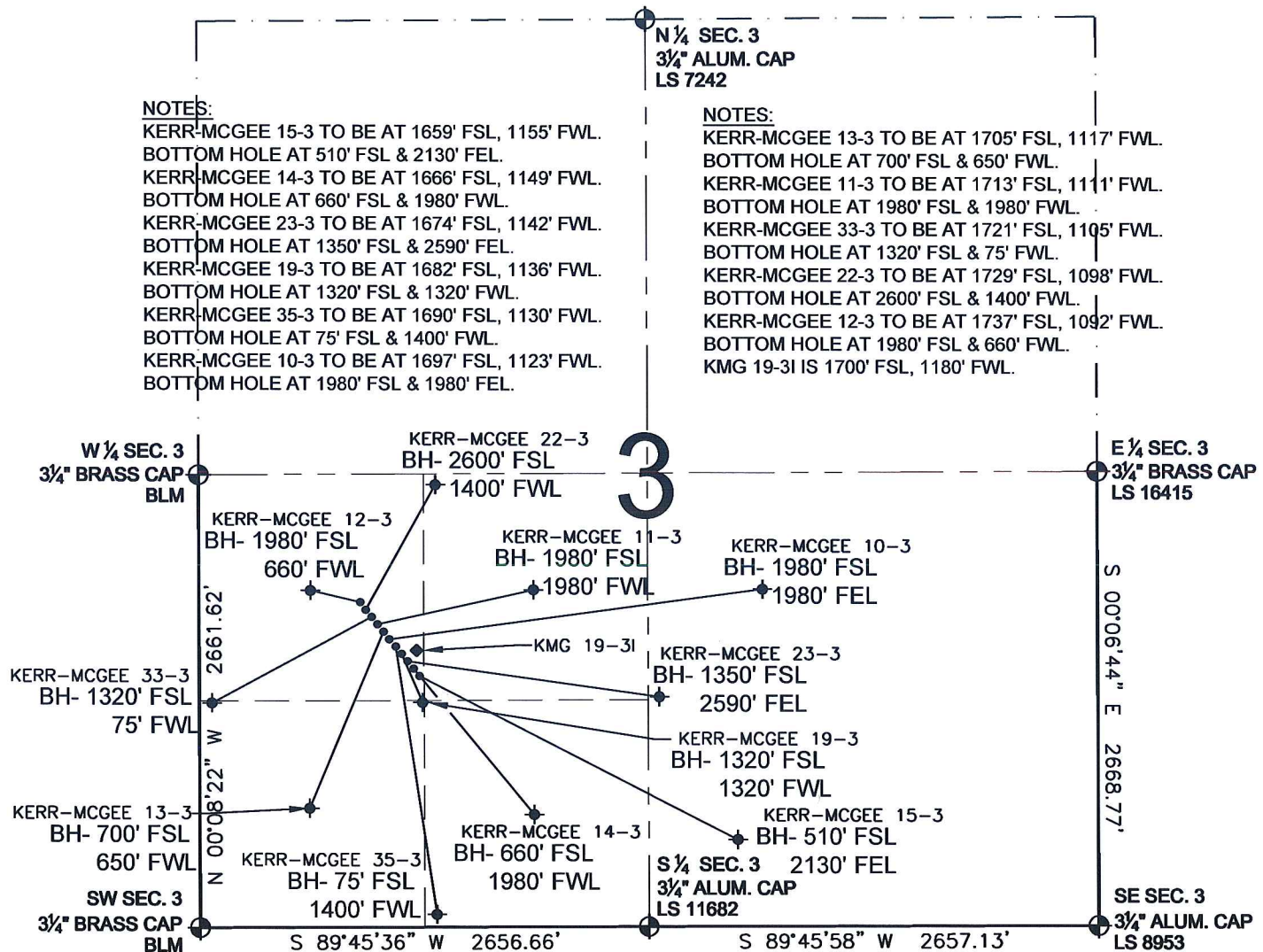


PAD DRAWING - KERR-MCGEE 11 PAD

SECTION 3, TOWNSHIP 1 NORTH, RANGE 68 WEST, 6TH P.M.

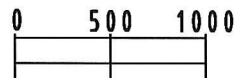


NOTES:


- THIS SURVEY WAS DONE BY GPS METHODS AND CONFORMS TO THE MINIMUM STANDARDS SET BY THE C.O.G.C.C., RULE NO. 215
- ELEVATIONS SHOWN AT THE WELL HEAD, AS WELL AS HORIZONTAL CONTROL, ARE BASED ON GPS-RTK VALUES DERIVED FROM DOING 2-HOUR STATIC GPS SESSIONS AND REDUCTIONS USING O.P.U.S. SOLUTIONS.
 VERTICAL = NAVD88; HORIZONTAL = NAD83/92
- THE BEARINGS SHOWN HEREON ARE BASED ON GPS OBSERVATIONS BETWEEN THE MONUMENTS SHOWN HEREON AS FOUND ON THE FIELD DATE BELOW.
- DISTANCES SHOWN ARE AT GROUND LEVEL, AS MEASURED IN THE FIELD, WITH TIES TO WELLS MEASURED AT A PERPENDICULAR TO SECTION LINES.

LEGEND

- ◈ = EXISTING MONUMENT ◈ = BOTTOM HOLE BH= BOTTOM HOLE
 ● = PROPOSED WELL ◈ = EXISTING WELL



SCALE: 1"=1000'

REVISIONS		PREPARED BY:	 PFS Petroleum Field Services, LLC 1801 W. 13th Ave. Denver, CO 80204
INITIAL	DATE		

KERR-MCGEE OIL & GAS ONSHORE LP

FIELD DATE:
12-10-09

DRAWING DATE:
12-16-09

BY:
SMF

PAD NAME:
KERR-MCGEE 11 PAD

SURFACE LOCATION:

WELD COUNTY, COLORADO
 NW 1/4 SW 1/4, SEC. 3, T1N, R68W