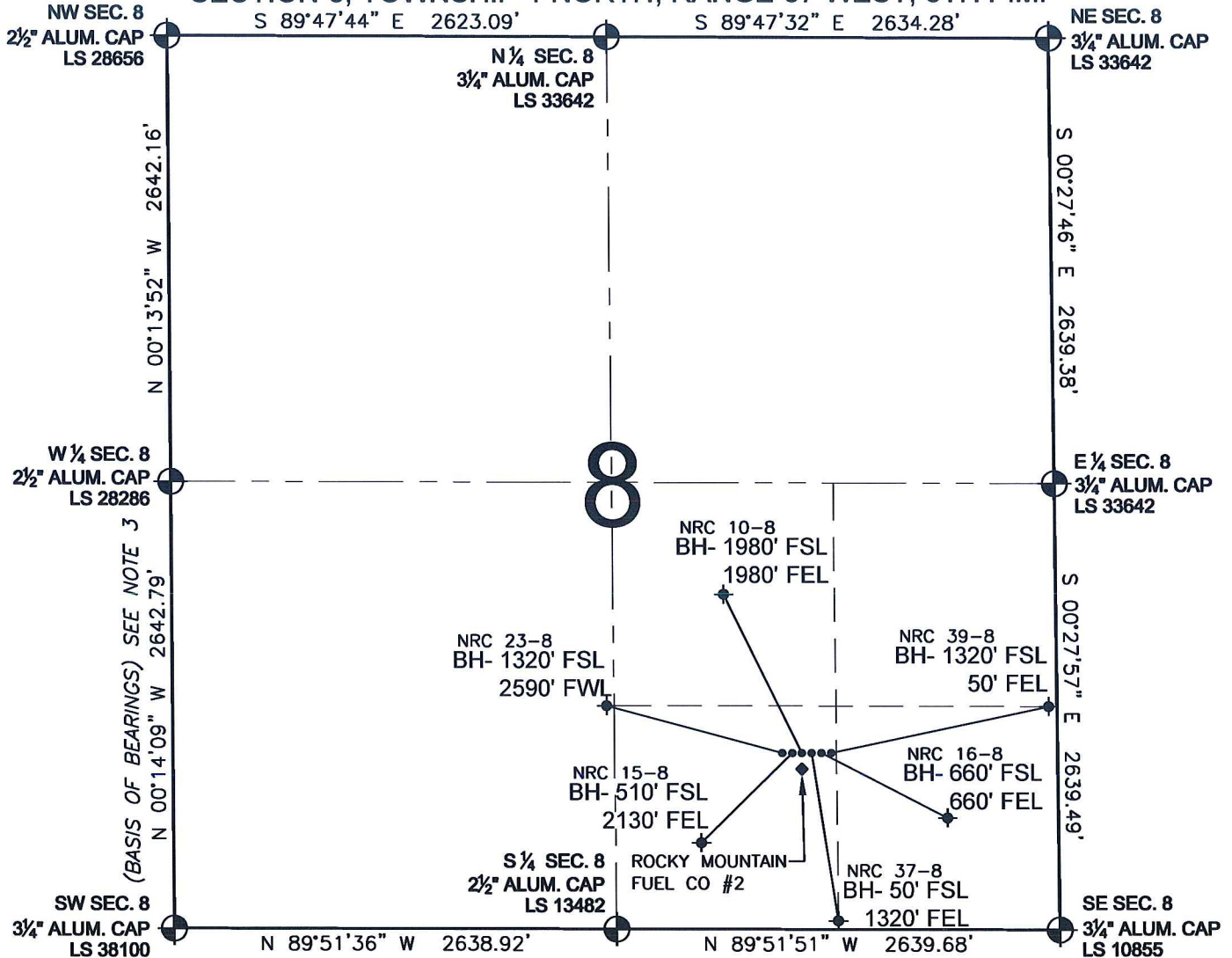


PAD DRAWING - NRC 6 PAD

SECTION 8, TOWNSHIP 1 NORTH, RANGE 67 WEST, 6TH P.M.



LEGEND

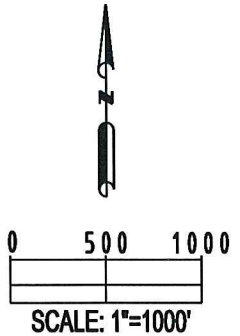
- = EXISTING MONUMENT
 = BOTTOM HOLE
 BH= BOTTOM HOLE
 = PROPOSED WELL
 = EXISTING WELL


NOTES:

- THIS SURVEY WAS DONE BY GPS METHODS AND CONFORMS TO THE MINIMUM STANDARDS SET BY THE C.O.G.C.C., RULE NO. 215
- ELEVATIONS SHOWN AT THE WELL HEAD, AS WELL AS HORIZONTAL CONTROL, ARE BASED ON GPS-RTK VALUES DERIVED FROM DOING 2-HOUR STATIC GPS SESSIONS AND REDUCTIONS USING O.P.U.S. SOLUTIONS.
VERTICAL = NAVD88; HORIZONTAL = NAD83/92
- THE BEARINGS SHOWN HEREON ARE BASED ON GPS OBSERVATIONS BETWEEN THE MONUMENTS SHOWN HEREON AS FOUND ON THE FIELD DATE BELOW.
- DISTANCES SHOWN ARE AT GROUND LEVEL, AS MEASURED IN THE FIELD, WITH TIES TO WELLS MEASURED AT A PERPENDICULAR TO SECTION LINES.

NOTES:

- NRC 39-8 TO BE AT 1043' FSL, 1333' FEL.
 BOTTOM HOLE AT 1320' FSL & 50' FEL.
 NRC 16-8 TO BE AT 1043' FSL, 1349' FEL.
 BOTTOM HOLE AT 660' FSL & 660' FEL.
 NRC 37-8 TO BE AT 1043' FSL, 1365' FEL.
 BOTTOM HOLE AT 50' FSL & 1320' FEL.
 NRC 10-8 TO BE AT 1043' FSL, 1381' FEL.
 BOTTOM HOLE AT 1980' FSL & 1980' FEL.
 NRC 15-8 TO BE AT 1043' FSL, 1397' FEL.
 BOTTOM HOLE AT 510' FSL & 2130' FEL.
 NRC 23-8 TO BE AT 1043' FSL, 1413' FEL.
 BOTTOM HOLE AT 1320' FSL & 2590' FWL.
 ROCKY MOUNTAIN FUEL CO #2 IS 994' FSL, 1381' FEL.



REVISIONS		PREPARED BY:
INITIAL	DATE	
		 PFS Petroleum Field Services, LLC 1801 W. 13th Ave. Denver, CO 80204

KERR-MCGEE OIL & GAS ONSHORE LP

FIELD DATE:
12-09-09

PAD NAME:
NRC 6 PAD

DRAWING DATE:
12-11-09

SURFACE LOCATION:

BY:
SMF

WELD COUNTY, COLORADO
SW 1/4 SE 1/4, SEC. 8, T1N, R67W