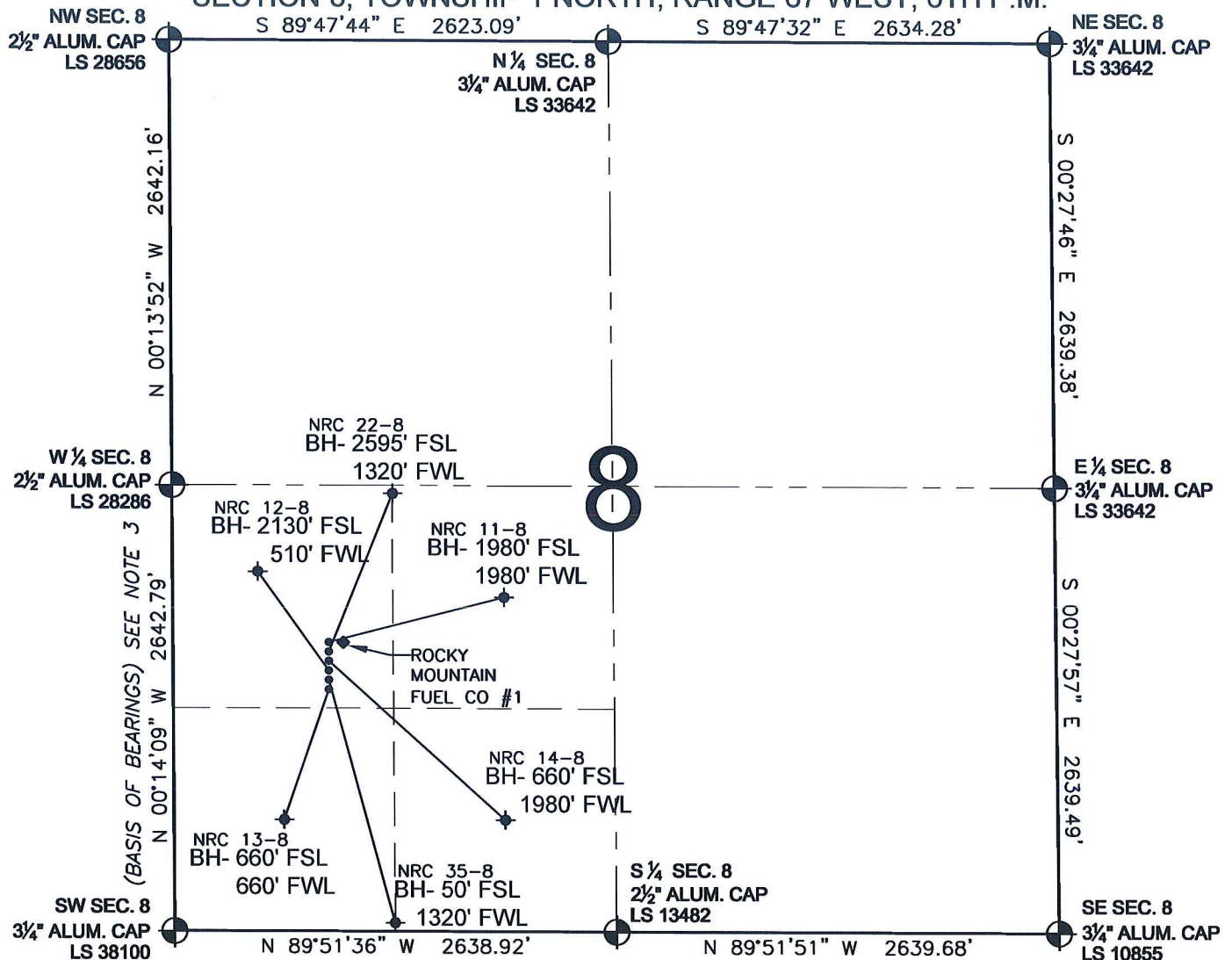


# PAD DRAWING - NRC 6 PAD

SECTION 8, TOWNSHIP 1 NORTH, RANGE 67 WEST, 6TH P.M.



## LEGEND

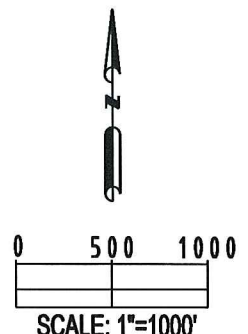
- = EXISTING MONUMENT   
 = BOTTOM HOLE   
 BH= BOTTOM HOLE  
 = PROPOSED WELL   
 = EXISTING WELL

## NOTES:

- THIS SURVEY WAS DONE BY GPS METHODS AND CONFORMS TO THE MINIMUM STANDARDS SET BY THE C.O.G.C.C., RULE NO. 215
- ELEVATIONS SHOWN AT THE WELL HEAD, AS WELL AS HORIZONTAL CONTROL, ARE BASED ON GPS-RTK VALUES DERIVED FROM DOING 2-HOUR STATIC GPS SESSIONS AND REDUCTIONS USING O.P.U.S. SOLUTIONS.  
VERTICAL = NAVD88; HORIZONTAL = NAD83/92
- THE BEARINGS SHOWN HEREON ARE BASED ON GPS OBSERVATIONS BETWEEN THE MONUMENTS SHOWN HEREON AS FOUND ON THE FIELD DATE BELOW.
- DISTANCES SHOWN ARE AT GROUND LEVEL, AS MEASURED IN THE FIELD, WITH TIES TO WELLS MEASURED AT A PERPENDICULAR TO SECTION LINES.

## NOTES:

- NRC 13-8 TO BE AT 1548' FSL, 931' FWL.  
 BOTTOM HOLE AT 660' FSL & 660' FWL.  
 NRC 35-8 TO BE AT 2130' FSL, 931' FWL.  
 BOTTOM HOLE AT 50' FSL & 1320' FWL.  
 NRC 14-8 TO BE AT 1596' FSL, 932' FWL.  
 BOTTOM HOLE AT 660' FSL & 1980' FWL.  
 NRC 12-8 TO BE AT 1580' FSL, 932' FWL.  
 BOTTOM HOLE AT 2130' FSL & 510' FWL.  
 NRC 11-8 TO BE AT 1628' FSL, 933' FWL.  
 BOTTOM HOLE AT 1980' FSL & 1980' FWL.  
 NRC 22-8 TO BE AT 1612' FSL, 933' FWL.  
 BOTTOM HOLE AT 2595' FSL & 1320' FWL.  
 ROCKY MOUNTAIN FUEL CO #1 IS 1628' FSL, 982' FWL.



## REVISIONS

INITIAL	DATE
SMF	01-15-10

PREPARED BY:



KERR-MCGEE OIL & GAS ONSHORE LP

FIELD DATE:  
12-09-09

PAD NAME:  
NRC 6 PAD

DRAWING DATE:  
12-11-09

SURFACE LOCATION:

BY:  
SMF

WELD COUNTY, COLORADO  
NW 1/4 SW 1/4, SEC. 8, T1N, R67W