

EOG RESOURCES, INC.
RANDALL CREEK #03-30H
LOCATED IN WELD COUNTY, COLORADO
SECTION 30, T12N, R62W, 6th P.M.

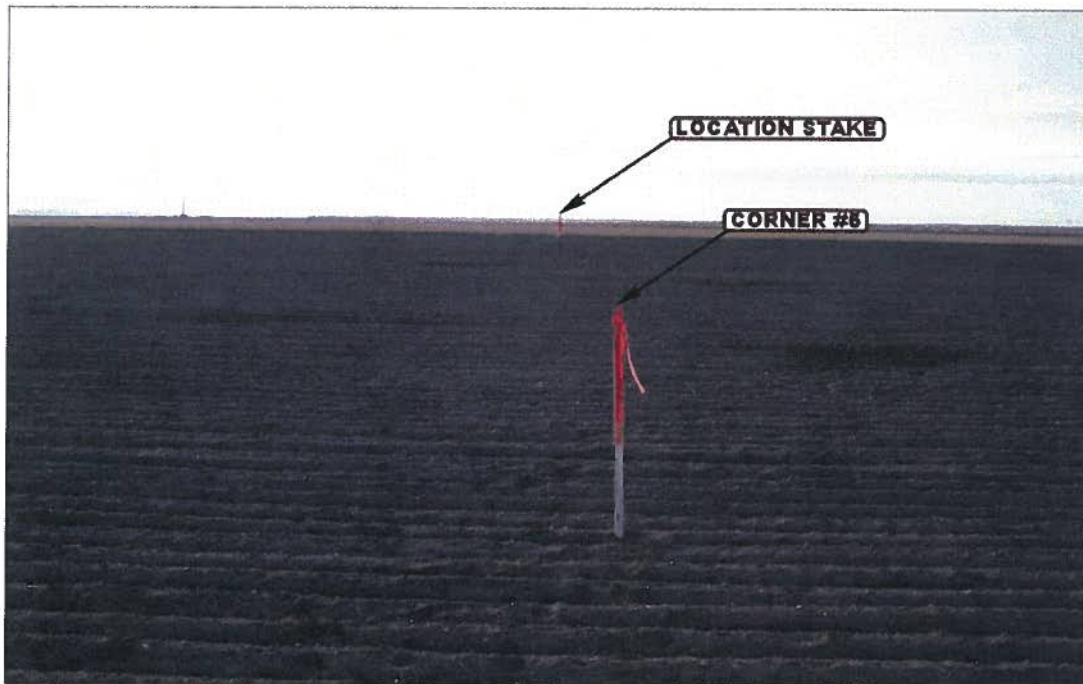


PHOTO: VIEW FROM CORNER #5 TO LOCATION STAKE

CAMERA ANGLE: WESTERLY

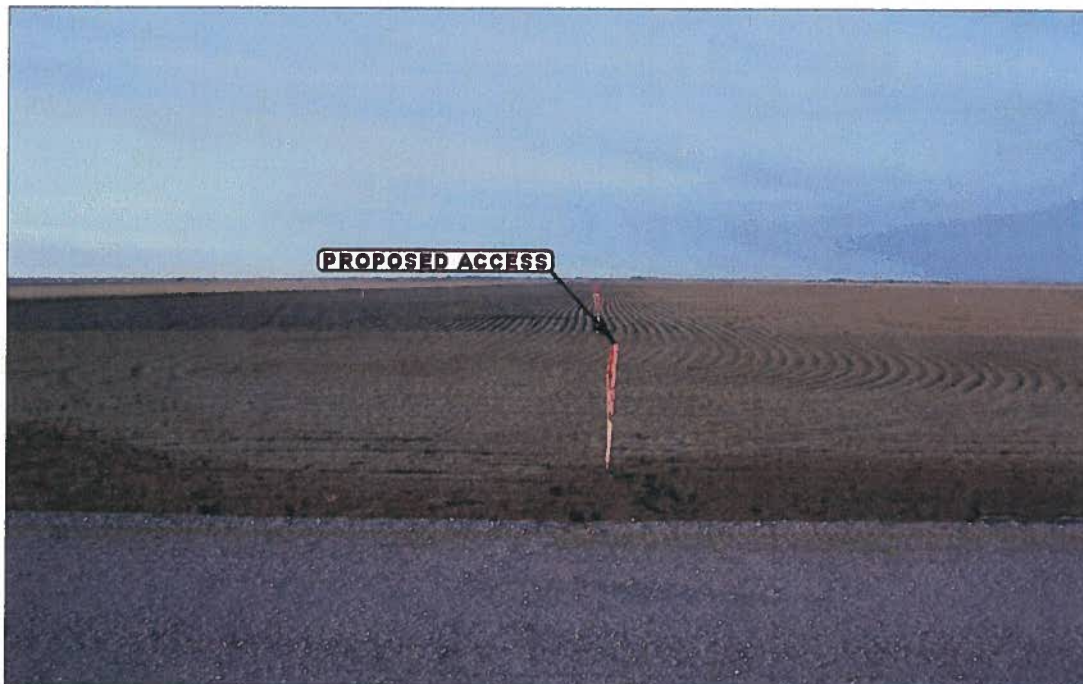


PHOTO: VIEW FROM BEGINNING OF PROPOSED ACCESS

CAMERA ANGLE: NORTHERLY



- Since 1964 -

UELS

Uintah Engineering & Land Surveying
85 South 200 East Vernal, Utah 84078
435-789-1017 FAX (435) 789-1813

LOCATION PHOTOS

01 19 10
MONTH DAY YEAR

TAKEN BY: B.H.

DRAWN BY: Z.L.

REVISED: 00-00-00

PHOTO
P1

EOG RESOURCES, INC.
RANDALL CREEK #03-30H
LOCATED IN WELD COUNTY, COLORADO
SECTION 30, T12N, R62W, 6th P.M.



PHOTO: VIEW OF LOCATION STAKE

CAMERA ANGLE: EASTERLY

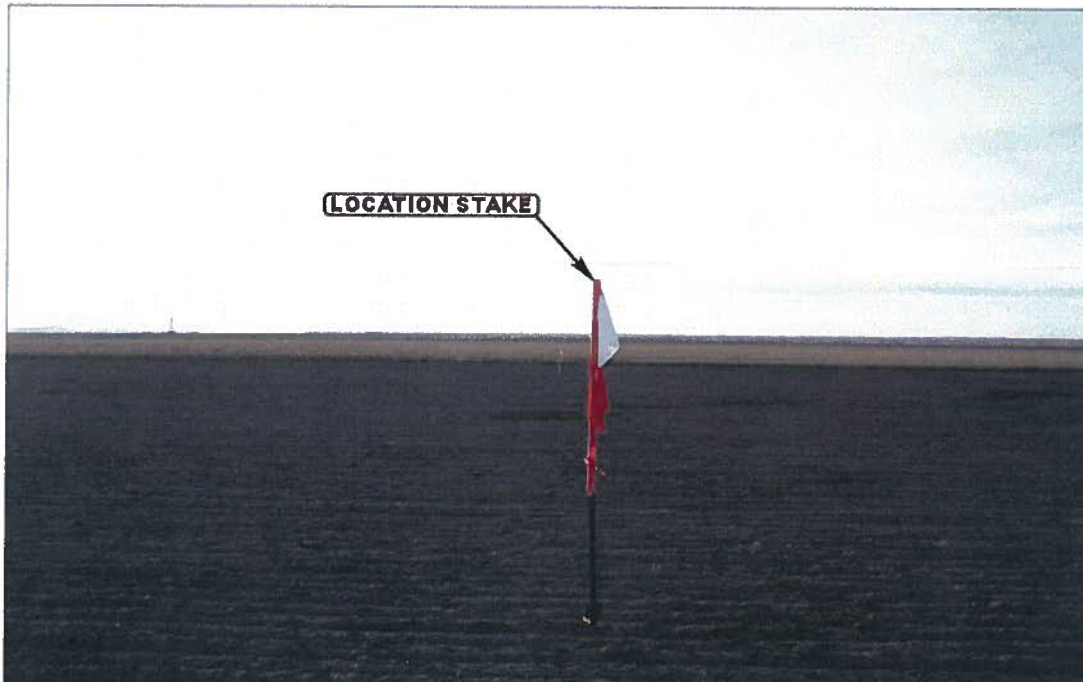


PHOTO: VIEW OF LOCATION STAKE

CAMERA ANGLE: WESTERLY



- Since 1964 -



Uintah Engineering & Land Surveying
85 South 200 East Vernal, Utah 84078
435-789-1017 FAX (435) 789-1813

LOCATION PHOTOS

01 **19** **10**
MONTH DAY YEAR

TAKEN BY: B.H.

DRAWN BY: Z.L.

REVISED: 00-00-00

PHOTO
P2

EOG RESOURCES, INC.
RANDALL CREEK #03-30H
LOCATED IN WELD COUNTY, COLORADO
SECTION 30, T12N, R62W, 6th P.M.

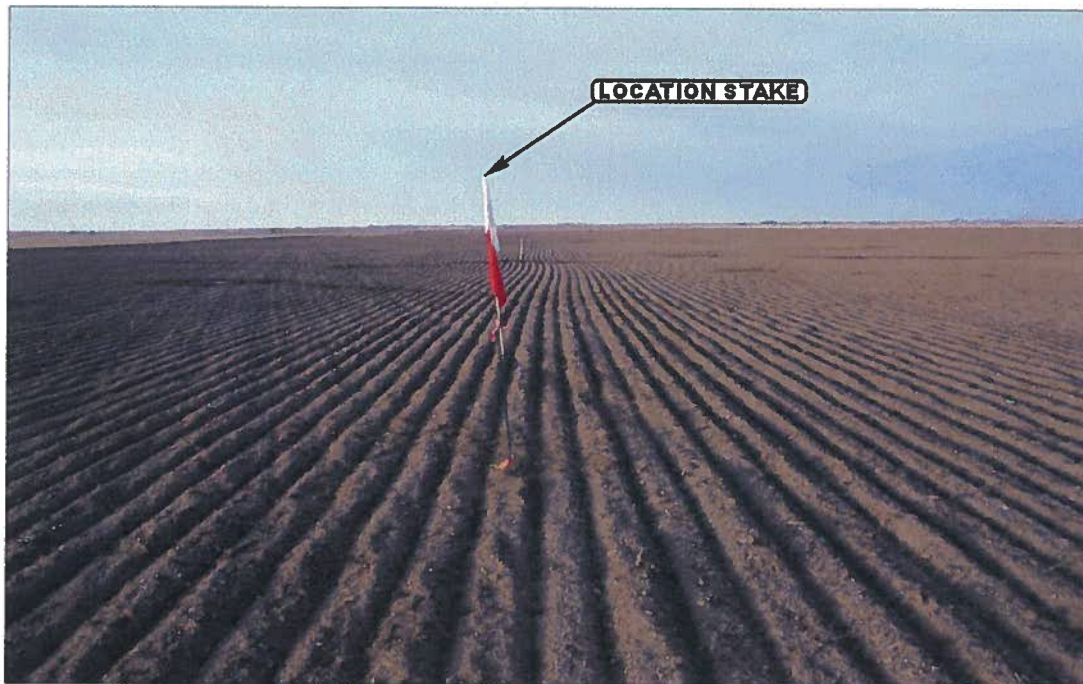


PHOTO: VIEW OF LOCATION STAKE

CAMERA ANGLE: NORTHERLY

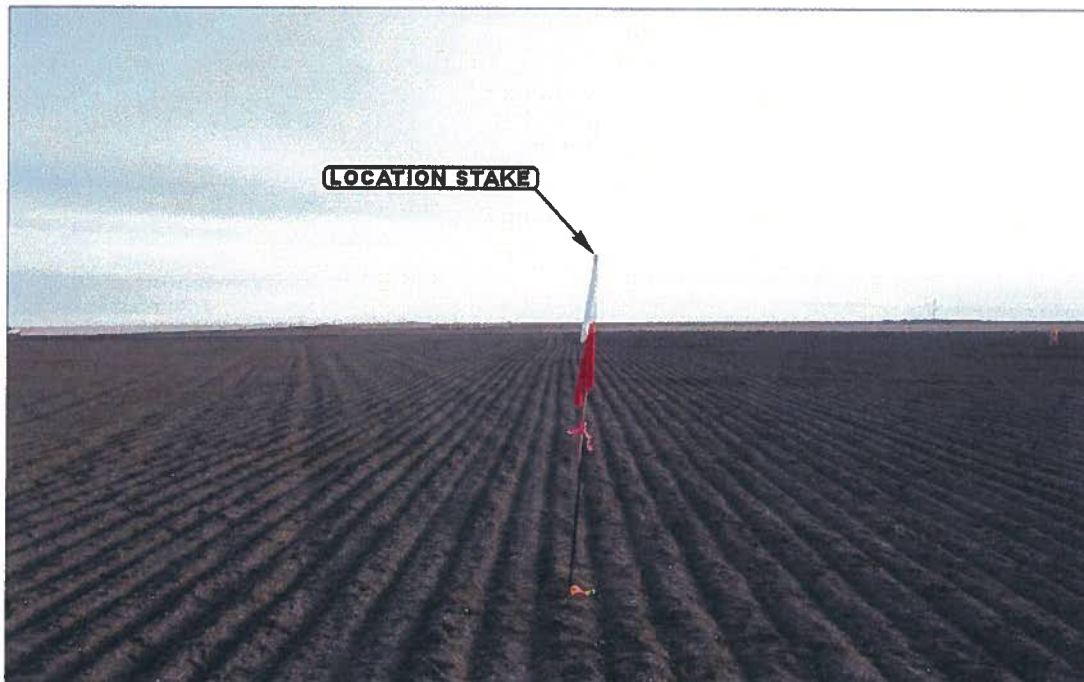


PHOTO: VIEW OF LOCATION STAKE

CAMERA ANGLE: SOUTHERLY



- Since 1964 -

UELS

Uintah Engineering & Land Surveying
85 South 200 East Vernal, Utah 84078
435-789-1017 FAX (435) 789-1813

LOCATION PHOTOS

01 **19** **10**
MONTH DAY YEAR

TAKEN BY: B.H.

DRAWN BY: Z.L.

REVISED: 00-00-00

PHOTO
P3