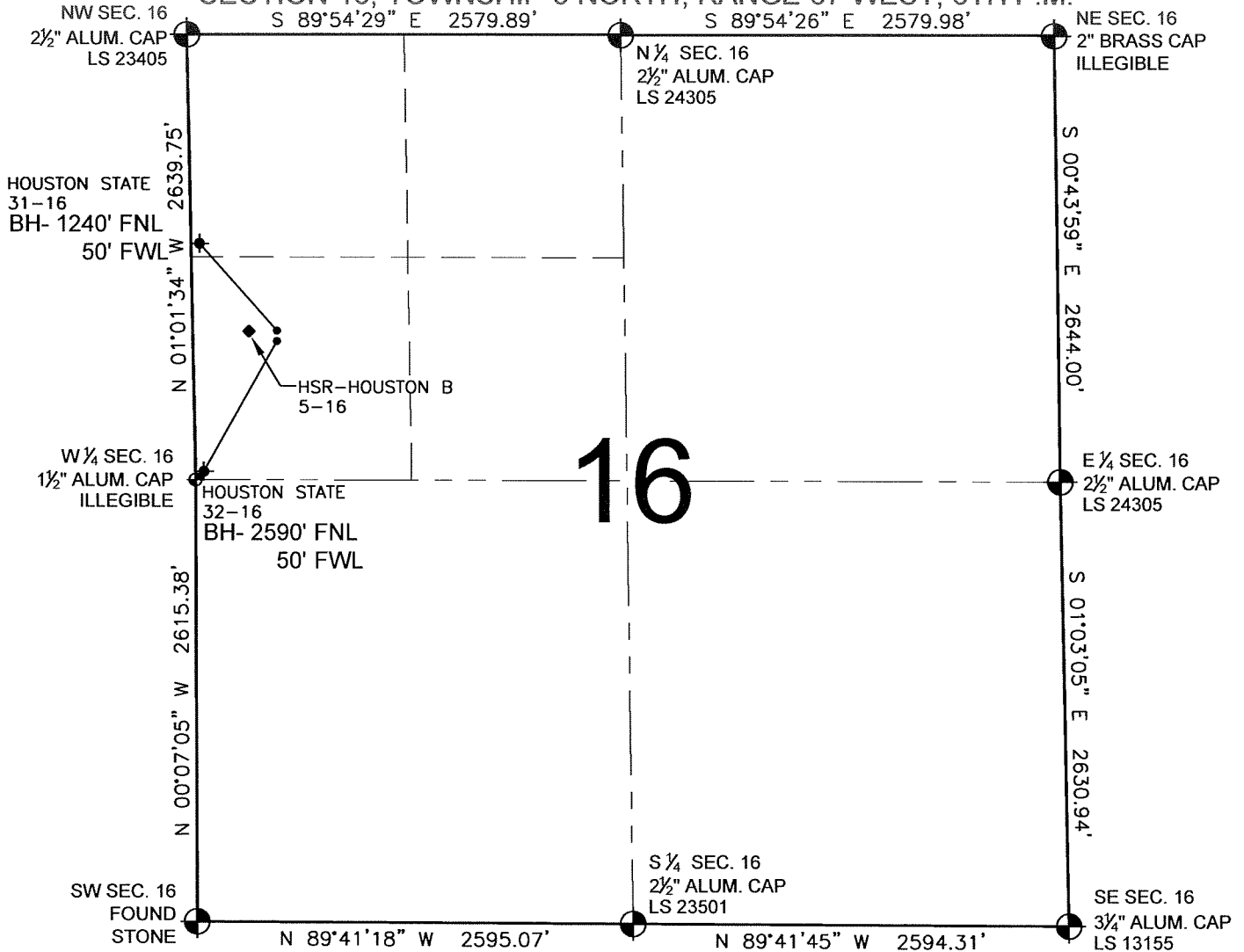


PAD DRAWING - HOUSTON STATE 2 PAD

SECTION 16, TOWNSHIP 3 NORTH, RANGE 67 WEST, 6TH P.M.



NOTES:

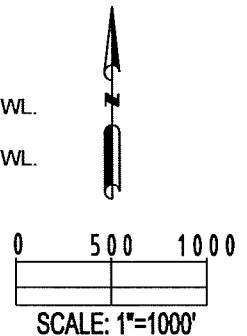
1. THIS SURVEY WAS DONE BY GPS METHODS AND CONFORMS TO THE MINIMUM STANDARDS SET BY THE C.O.G.C.C., RULE NO. 215
2. ELEVATIONS SHOWN AT THE WELL HEAD, AS WELL AS HORIZONTAL CONTROL, ARE BASED ON GPS-RTK VALUES DERIVED FROM DOING 2-HOUR STATIC GPS SESSIONS AND REDUCTIONS USING O.P.U.S. SOLUTIONS.
VERTICAL = NAVD88; HORIZONTAL = NAD83/92
3. THE BEARINGS SHOWN HEREON ARE BASED ON GPS OBSERVATIONS BETWEEN THE MONUMENTS SHOWN HEREON AS FOUND ON THE FIELD DATE BELOW.
4. DISTANCES SHOWN ARE AT GROUND LEVEL, AS MEASURED IN THE FIELD, WITH TIES TO WELLS MEASURED AT A PERPENDICULAR TO SECTION LINES.

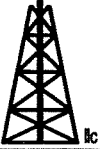
LEGEND

- = EXISTING MONUMENT
 = BOTTOM HOLE
 BH= BOTTOM HOLE
 = PROPOSED WELL
 = EXISTING WELL

NOTES:

HOUSTON STATE 32-16 TO BE AT 1772' FNL, 499' FWL.
 BOTTOM HOLE AT 2590' FNL & 50' FWL.
 HOUSTON STATE 31-16 TO BE AT 1756' FNL, 499' FWL.
 BOTTOM HOLE AT 1240' FNL & 50' FWL.
 HSR-HOUSTON B 5-16 IS 1756' FNL, 450' FWL.



REVISIONS		PREPARED BY:	 PFS Petroleum Field Services, LLC 1801 W. 13th Ave. Denver, CO 80204
INITIAL	DATE		

KERR-MCGEE OIL & GAS ONSHORE LP

FIELD DATE:
08-13-09

PAD NAME:
HOUSTAN STATE 2 PAD

DRAWING DATE:
08-18-09

SURFACE LOCATION:

BY:
SMF

WELD COUNTY, COLORADO
SW 1/4 NW 1/4, SEC. 16, T3N, R67W