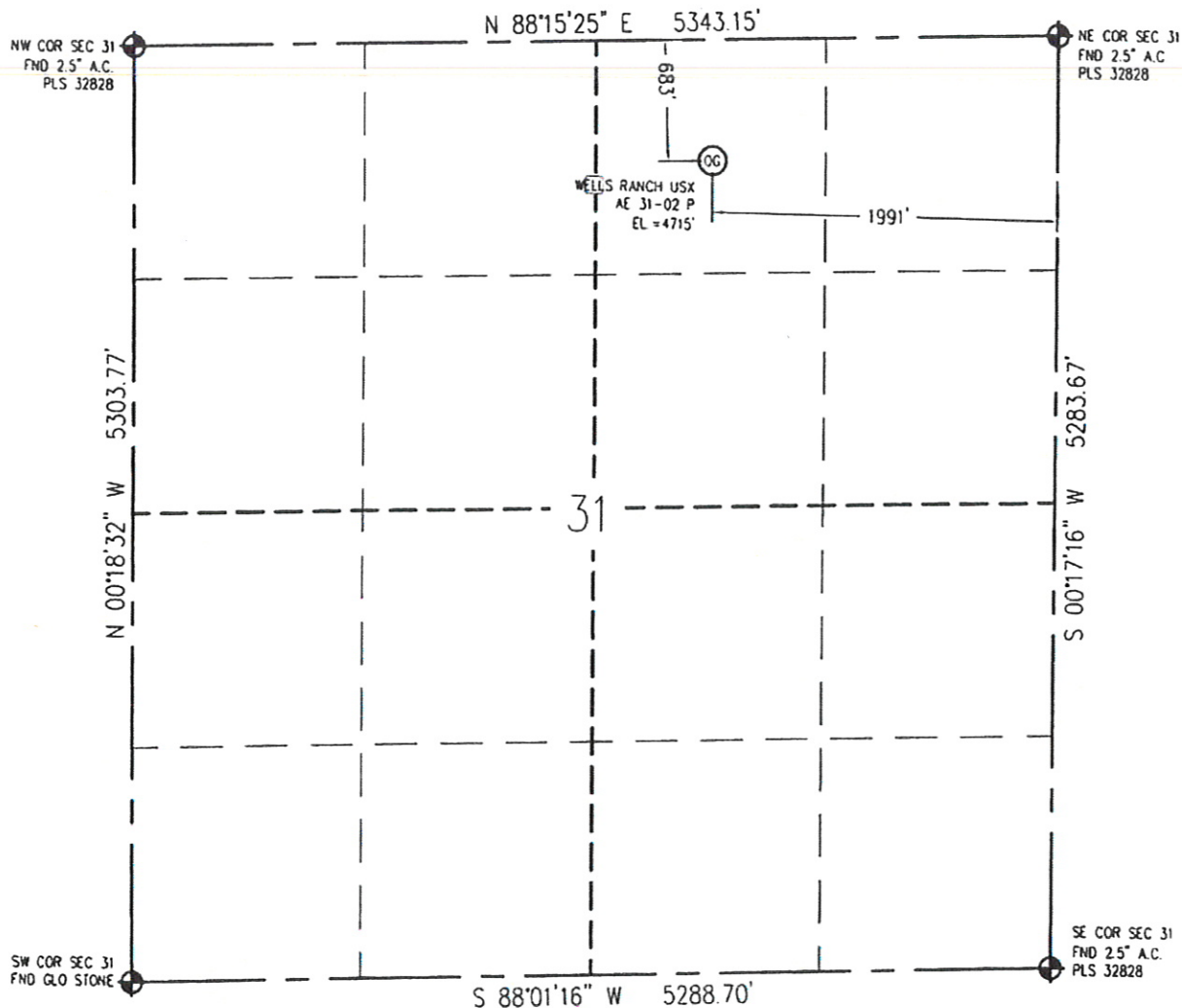


Baseline Engineering Corp. 710 11th Avenue Suite 105 Greeley, Colorado 80631

WELL LOCATION CERTIFICATE

THIS MAP DOES NOT REPRESENT A BOUNDARY SURVEY

SECTION 31
TOWNSHIP 6 NORTH
RANGE 62 WEST



IN ACCORDANCE WITH A REQUEST FROM SEAN CASPER - NOBLE ENERGY INC, BASELINE ENGINEERING CORP. HAS DETERMINED THE LOCATION OF THE WELLS RANCH USX AE 31-02 P TO BE 683' FNL, 1991' FEL, AS MEASURED AT NINETY (90) DEGREES FROM THE SECTION LINE OF SECTION 31, TOWNSHIP 6 NORTH, RANGE 62 WEST, 6TH PRINCIPLE MERIDIAN, WELD COUNTY, COLORADO

I HEREBY CERTIFY THAT THIS WELL LOCATION CERTIFICATE WAS PREPARED BY ME, OR UNDER MY DIRECT SUPERVISION, THAT THE FIELD WORK WAS COMPLETED ON 09/11/2009, THAT IT IS NOT A LAND SURVEY PLAT OR AN IMPROVEMENT SURVEY PLAT, AND THAT IT IS NOT TO BE RELIED UPON FOR ESTABLISHMENT OF FENCE, BUILDING, OR OTHER FUTURE IMPROVEMENT LINES

Scale 1" = 1000 ft

NOTES

- 1) LAT/LONG SHOWN ARE BASED ON A GPS OBSERVATION (NAD83).
- 2) BEARINGS SHOWN ARE GRID BEARINGS OF THE COLORADO STATE PLANE COORDINATE SYSTEM, NORTH ZONE, NORTH AMERICAN DATUM 1983/2007
- 3) GROUND ELEVATIONS ARE BASED ON A GPS OBSERVATION (NAVD 88 DATUM)
- 4) ALL DISTANCES SHOWN ARE FIELD MEASURED UNLESS OTHERWISE NOTED
- 5) THE NEAREST EXISTING WELL IS: WELLS RANCH AE 31-06 1904' SOUTHWEST.
- 6) IMPROVEMENTS: SEE VISIBLE IMPROVEMENTS EXHIBIT FOR ALL VISIBLE IMPROVEMENTS WITHIN 400' OF WELL HEAD.
- 7) SURFACE USE: PASTURE

NOTICE: According to Colorado law you MUST commence any legal action based upon any defect in this WLC within three years after you first discover such defect. In no event may any action based upon any defect in this WLC be commenced more than ten years from this said date of the certification shown hereon

LATITUDE & LONGITUDE (NAD 83 SURFACE HOLE):
LATITUDE: N 40 448440"
LONGITUDE: W 104 363726"
PDOP: 2.1
1/4, 1/4: NW1/4 NE1/4
NEAREST PROPERTY LINE: 683' N

LEGEND

- - FOUND/SET SURVEY MONUMENT PER MONUMENT RECORD EXCEPTIONS NOTED
- - CALCULATED SURVEY MONUMENT POSITION
- (C) - CALCULATED DIMENSION



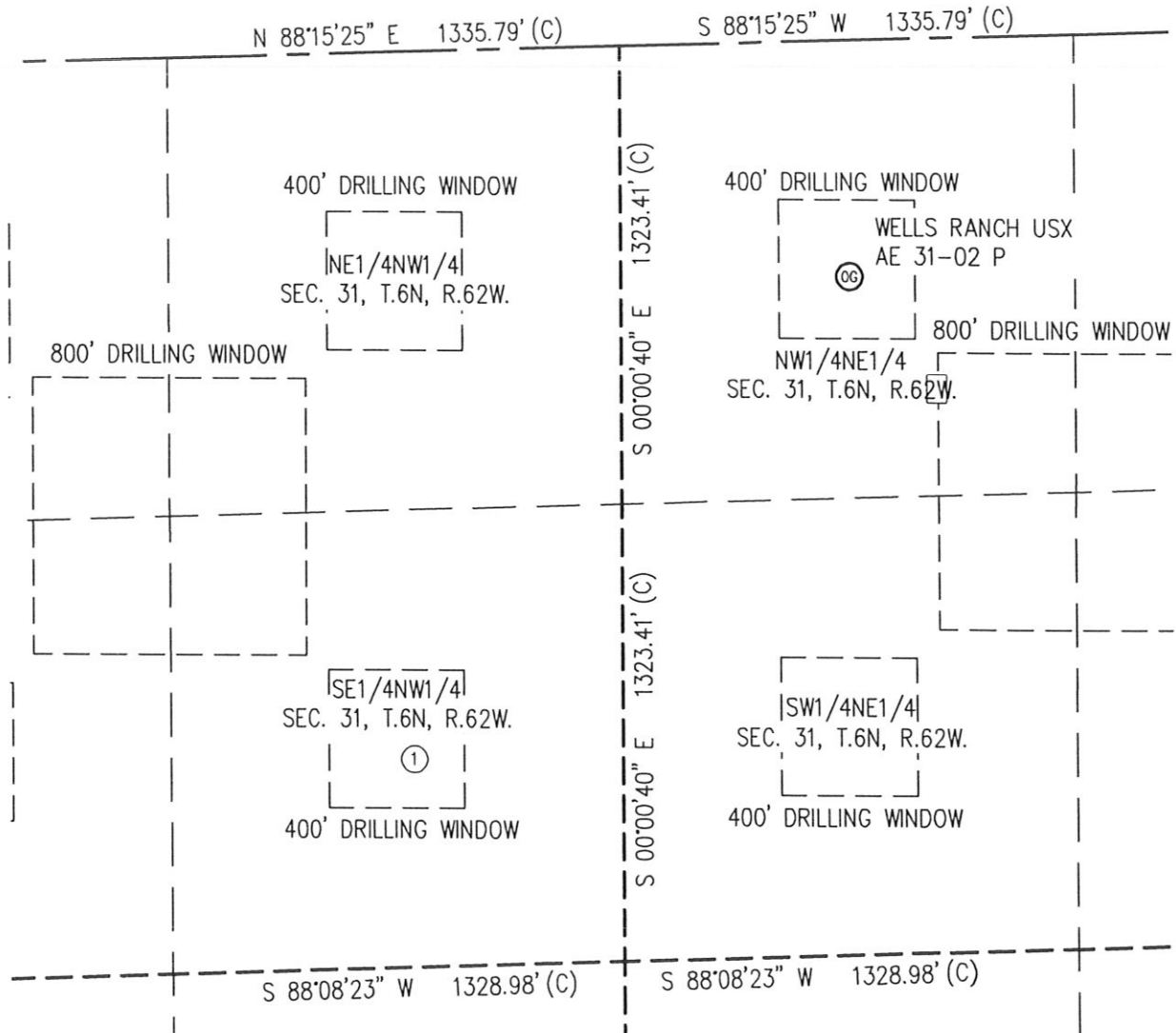
John C. Barickman
Professional Land Surveyor Registration No. 28258
State of Colorado
FOR AND ON BEHALF OF BASELINE ENGINEERING CORP

Completed
9/14/2009

JOB #: NOB6N62W31-01

SITE SKETCH

SECTION 31
TOWNSHIP 6 NORTH
RANGE 62 WEST



①

WELLS RANCH USX

AE 31-06

SE/NW

2047' FWL

2045' FNL

EL 4700'

LATITUDE: N 40.444638°

LONGITUDE: W 104.368418°

PDOP: 2.3

NOTES:

- 1) THIS SKETCH DOES NOT REPRESENT A BOUNDARY SURVEY.
- 2) THE DATUM FOR THE LATITUDES AND LONGITUDES ON THIS SKETCH IS NAD83.



0 500
Scale 1" = 500 ft