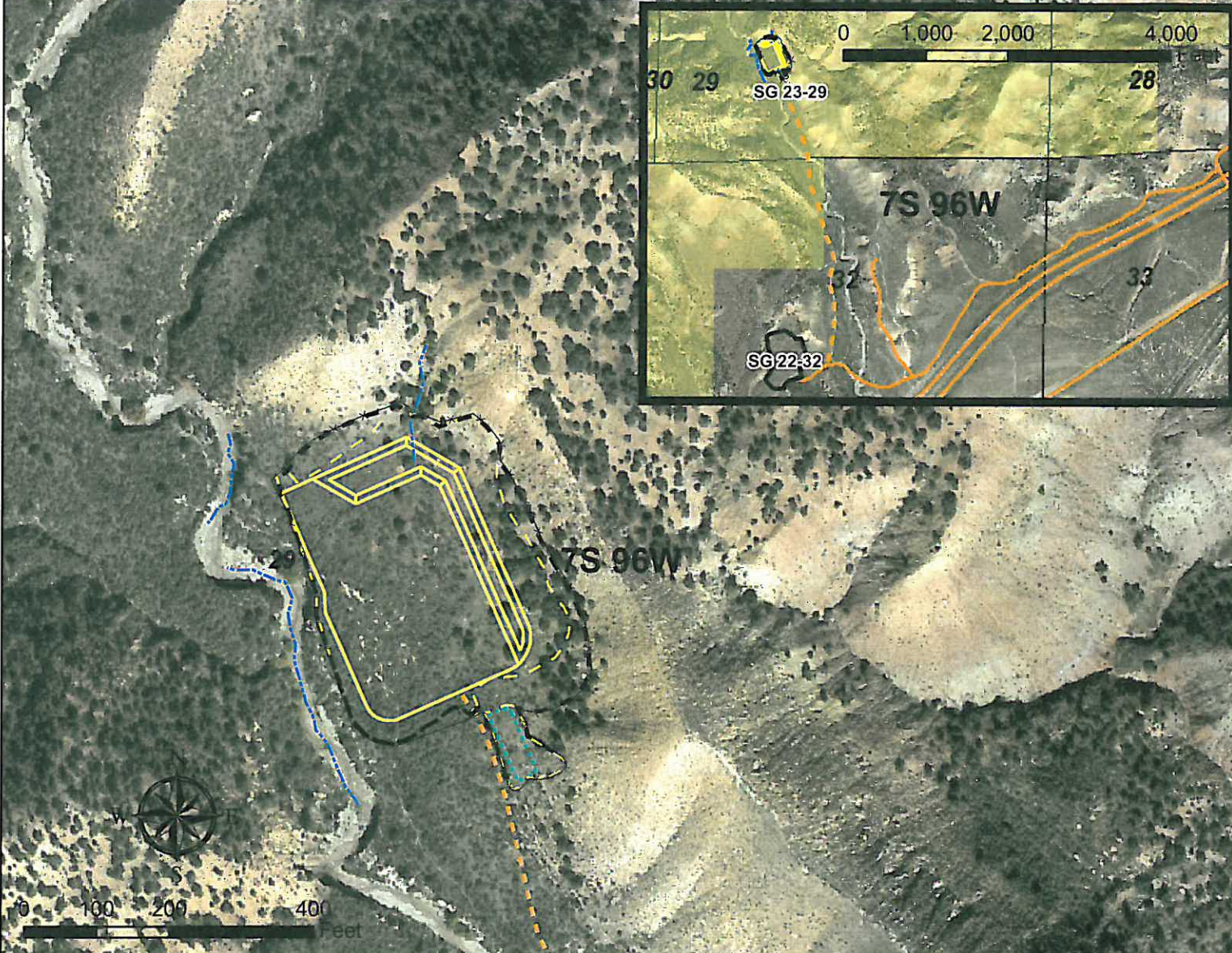
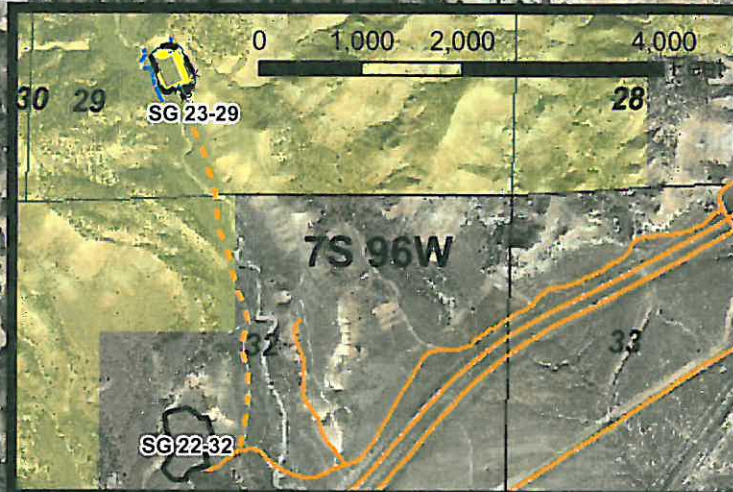


Geologist Information

General: New location, 22 new wells (2 first)
 Ownership: Federal surface/ Fed minerals
 SUA Status: N/A
 Spacing Units: All wells BH in section 29 - unspaced
 Adjacent Owners: Williams



Plan of Development

Access: Use access from south as shown
 Drilling: Conventional rig for first visit/ Efficiency rig for second visit
 Cuttings: In pit on location
 SIMOPS: No for conventional visit/ Yes on efficiency visit (Frac pad TBD)
 Completion: Frac on pad for conventional visit/ frac from remote frac pad on efficiency visit (location of remote frac pad TBD)
 Flowback: On pad for conventional visit/Back to remote frac pad (location TBD)
 Prod Equip: Production equipment to be off south side of pad adjacent to access road. Water and condensate will be piped from production equipment to tanks on the SG 22-32 pad. Tanks will be able to fit within the existing production equipment area on this pad.
 Pipeline: Will need new 12" gas/4" water/2" condensate line from Hoover Express inlet line to pad. Will require 15' additional width off of side of access road.

Legend

- BLM
- Existing Pad
- Proposed Road
- Proposed Production Equipment Area
- Proposed Limit of Disturbance
- Proposed Daylight Line
- Proposed Pad or Pit
- Drainage
- Existing Fence
- Existing Road

Williams Production RMT

SG 23-29 Plan of Development
 T7S R96W, Section 29

Date Prepared: February 1, 2010

