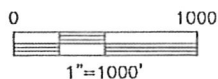
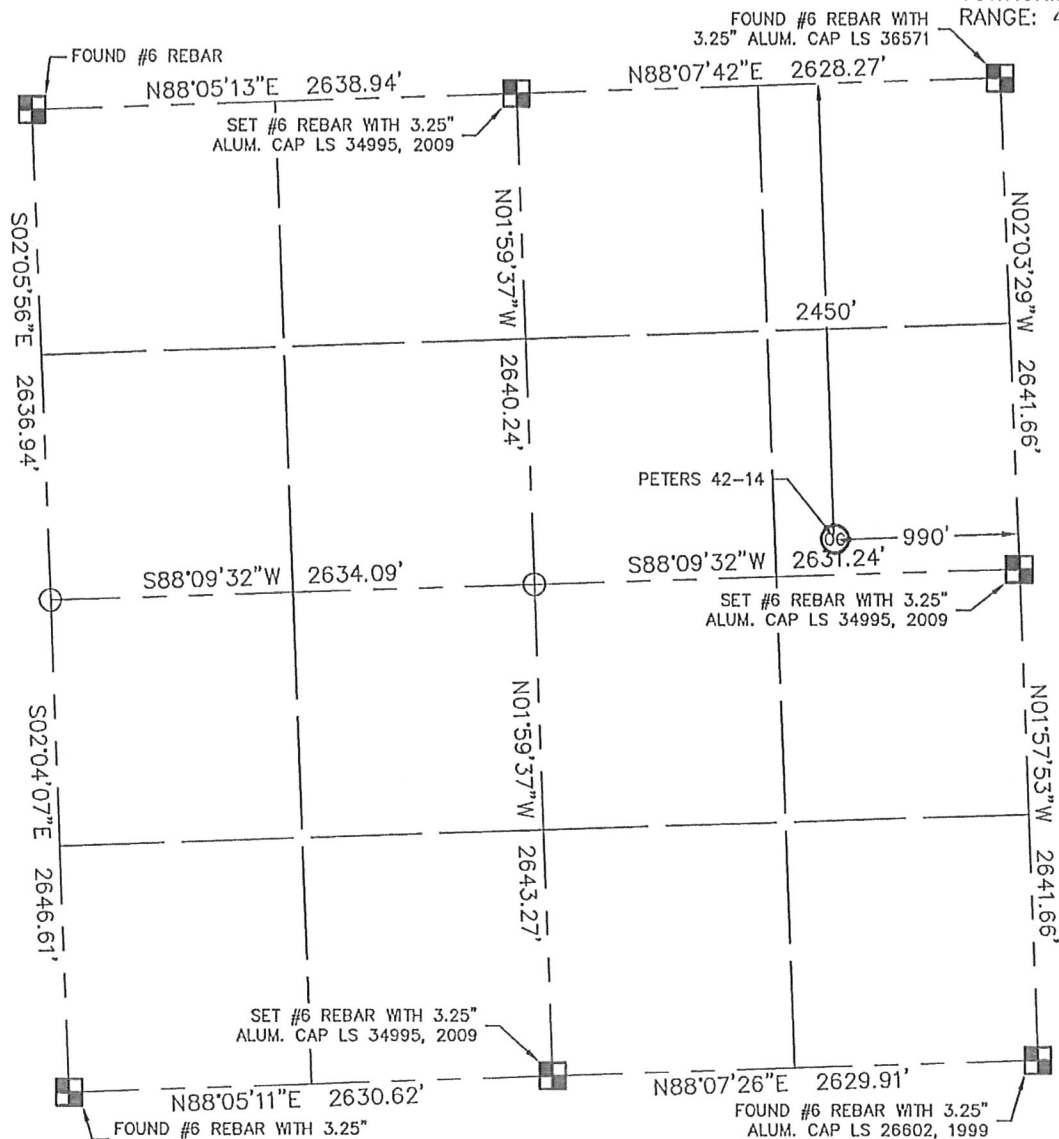


WELL LOCATION CERTIFICATE

THIS MAP DOES NOT REPRESENT A BOUNDARY SURVEY

SECTION: 14
TOWNSHIP: 2S
RANGE: 45WIn accordance with a request from Dan Casper with Noble Energy Inc.King Surveyors Inc. has determined the surface location of the PETERS 42-14 to be 2450' from the NORTH line and 990' from the EAST line as measured at right angles from the section line of Section 14, Township 2 South, Range 45 West of the Sixth Principal Meridian, County of Yuma, State of Colorado.

I hereby state that this Well Location Certificate was prepared by me, or under my direct supervision, that the fieldwork was completed on 12-7-09, for and on behalf of Noble Energy Inc. That this is not a Land Survey Plat or an Improvement Survey Plat, and that it is not to be relied upon for establishment of fence, building, or other future improvement lines.

NOTE:

- 1) Bearings shown are Grid Bearings of the Colorado State Plane Coordinate System, North Zone, North American Datum 1983/2007. The lineal dimensions as contained herein are based upon the "U.S. Survey Foot."
- 2) Ground elevations are based on an observed GPS elevation (NAVD 1988 DATUM).
- 3) IMPROVEMENTS: See LOCATION DRAWING exhibit for all visible improvements within 400' of well head.
- 4) SURFACE USE: DRYLAND-PASTURE

SURFACE LOCATION

LATITUDE: 39.88328°N
 LONGITUDE: 102.37664°W
 PDOP: 1.7
 ELEV: 3921
 1/4, 1/4: SE1/4NE1/4
 NEAREST PROPERTY LINE: 191' SOUTH

NOTE

According to Colorado law, you must commence any legal action based upon any defect in this W.L.C. within three years after you discover such defect. In no event, may any action based upon any defect in this survey be commenced more than ten years after the date of the certificate shown hereon. (13-80-105 C.R.S.)

LEGEND



= ALIQUOT MONUMENT AS DESCRIBED



= CALCULATED POSITION

12/18/2009
 Michael Chad Dike - On behalf of King Surveyors, Inc.
 Licensed Land Surveyor No. 38106
 State of Colorado
 PROJECT#: 2009255