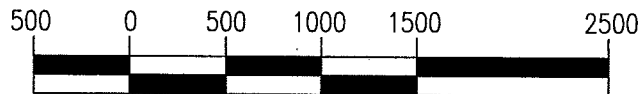
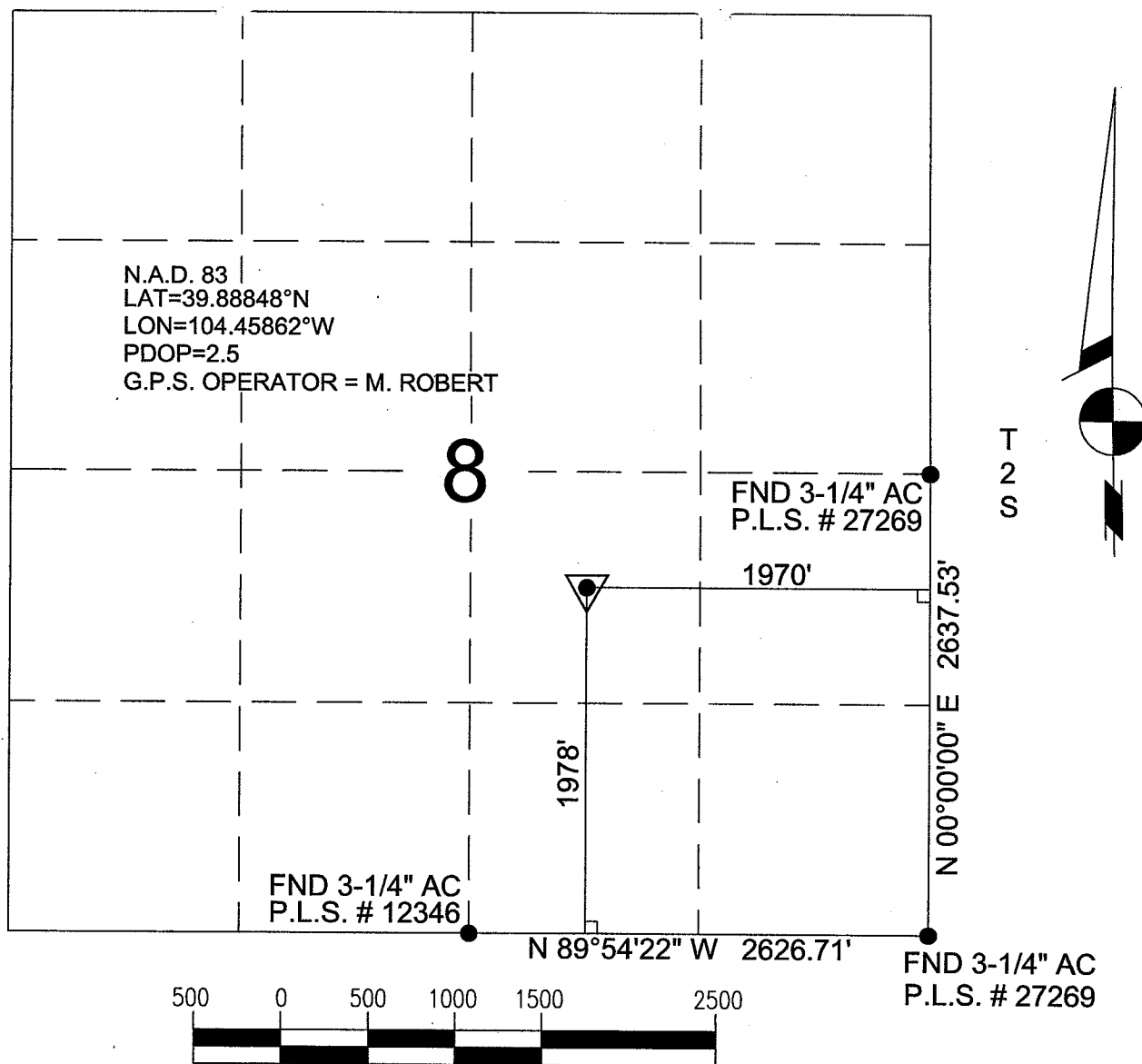


BASIS OF BEARINGS: THE EAST LINE OF THE SE1/4 OF SECTION 8, AS SHOWN HEREON.

R 63 W



SCALE 1"=1000'

Power Surveying Co., Inc. of Frederick, Colorado has in accordance
with a request from CASEY MORTON for MERIT ENERGY COMPANY
determined the location of WAILES 33-8
to be 1978' FSL & 1970' FEL Section 8, Township 2 SOUTH
Range 63 WEST of the Sixth Principal Meridian,
ADAMS County, Colorado

LOCATION NOTES

LOCATION FALLS IN: PLOWED FIELD

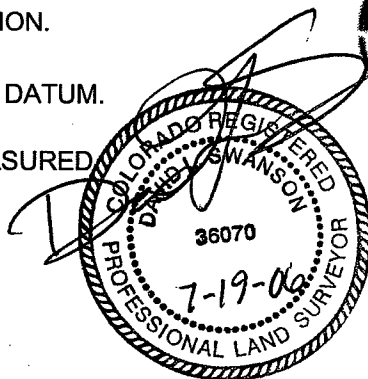
IMPROVEMENTS: NON WITHIN 200' OF LOCATION.

ELEVATION DETERMINED FROM NAVD 1988 DATUM.
GROUND ELEVATION = 5197'

DISTANCES AND BEARINGS ARE FIELD MEASURED
UNLESS OTHERWISE NOTED.

LEGEND

- SECTION CORNER (AS NOTED)
- ▼ PROPOSED WELL LOCATION
- ⊗ BOTTOM HOLE LOCATION



POWER
Surveying Company, Inc
Established 1948

7800 MILLER DRIVE UNIT C
FREDERICK, COLORADO 80504
303-702-1617

David L. Swanson
COLORADO P.L.S. #36070

FIELD DATE: 07-11-06 WO# 501-06-506
DATE OF COMPLETION: 07-12-06