



02109574



RECEIVED

MAR -1 07

COGCC

**BP America, Inc**501 WestLake Park Blvd.  
Houston, TX 77079-3092

Phone: 281-366-2000

February 23, 2007

Mr. Brian Macke, Director  
Colorado Oil and Gas Conservation Commission  
1120 Lincoln St., Suite 801  
Denver, CO 80203

Dear Morris:

**COGCC Order No. 112-156, Fruitland Coal Infill Well Pressure Data Requirement****Well – Zellitti Gas Unit A No. 2**

API No. 05-067-08834-00

Location – 34N 09W 34 NW-SUL, La Plata County

Date of First Delivery – 2/18/04

**Initial Pressure Information**Pressure – 1,379 PSIA @ 3,185' KB (*may not be in good communication with reservoir*)

Date Measured – 1/22/04

Shut-in Time – 33 Days

Method – Dip-in at depth indicated

**Two – Three Month Pressure Information**

No test obtained

**Three Year Pressure Information**

Maximum Pressure – 548 PSIG @ 0' KB (Corrected to 596 PSIA @ 2,974' KB)

Date Measured – 12/19/06

Shut-in Time – 7.1 Days

Cumulative Recovery @ Shut-in – 892 MMCF

Method – Surface pressure plus fluid level



RECEIVED

MAR -1 07

COGCC



Please call me at (281) 366-5836 if you have any questions or comments regarding this information.

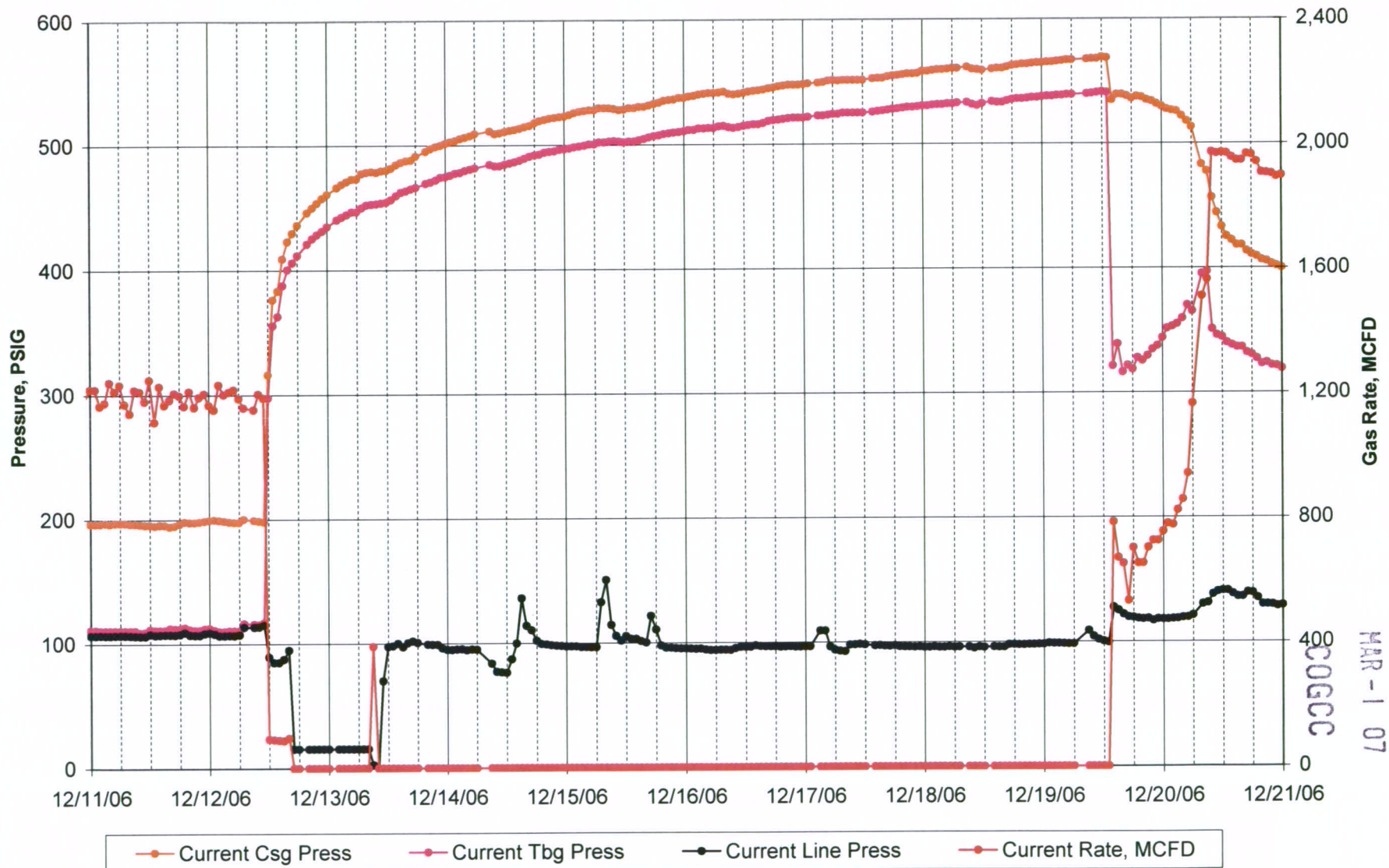
Yours very truly,

A handwritten signature in blue ink, appearing to read 'R. Gierhart'.

Roger Gierhart  
San Juan North Asset

cc: Well File

# ZELLITTI GAS UNIT A 2; API - 05067088340000



RECEIVED  
MAR - 1 07

RECEIVED

MAR -1 07

COGCC

**ZELLITTI GAS UNIT A 2; API - 05067088340000**

Maximum			
Pressure			
PSIG	SI	RTP	Days SI
569	12/12/06 10:00 AM	12/19/06 1:00 PM	7.1
Cumulative Recovery at SI, MMCF =			892

# Initial Infill Well Pressure with Sonic Fluid Level

RECEIVED

MAR -1 07

COGCC

Data	Input	
Well	Zellitti Gas Unit A No. 2	
API Number	050670883400	
Date and time of Sonolog shot	12/19/2006 02:30:00 PM	
SI Casing Pressure, PSIG	548	
Gas / Liquid Interface Pressure, PSIG	584	
Liquid Level, ft	2,974	
Pump Intake Depth, ft	2,974	
Equivalent Gas Free Liquid HT, TVD	0	
<b>Calculations</b>		
Bottomhole Pressure, PSIG	584	
Bottomhole Pressure, PSIA	596	
Reference Depth, Ft	2,974	



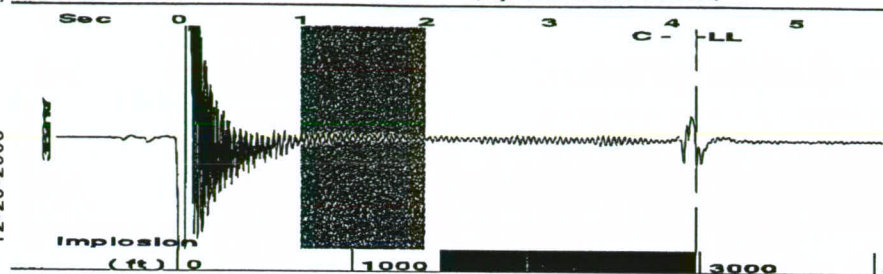
12-20-2006

10:04:31 a.m.

Line 1

375 7531

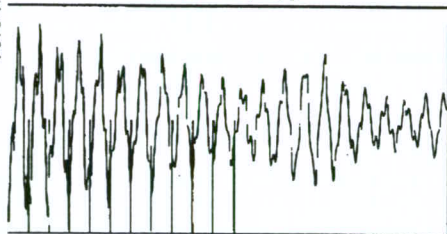
Group: AREA 1 WEST Well: Zellitti A-2 (acquired on: 12/19/06 14:30:00)



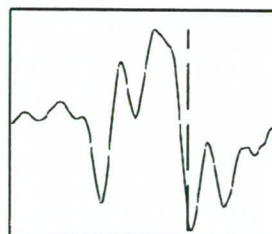
Filter Type High Pass Automatic Collar Count Yes  
 Manual Acoustic Velx 1372.29 ft/s Manual JTS/sec 21.645

Time 4.196 sec  
 Joints 93.8222 Jts  
 Depth 2974.16 ft

[ 1.0 to 2.0 (Sec) ]



Analysis Method: Automatic



Group: AREA 1 WEST Well: Zellitti A-2 (acquired on: 12/19/06 14:30:00)

Production

Current  
 Oil - \* -  
 Water - \* -  
 Gas - \* -

Potential  
 - \* - BBL/D  
 - \* - BBL/D  
 - \* - Mscf/D

Casing Pressure  
 548.2 psi (g)  
 Casing Pressure Buildup  
 0.1 psi

0.50 min  
 Gas/Liquid Interface Pressure  
 583.9 psi (g)

Liquid Level  
 2974.16 ft

Formation Depth  
 3177.00 ft

IPR Method  
 PBHP/SBHP  
 Production Efficiency

Vogel  
 - \* -  
 0.0

Oil 40 deg API  
 Water 1.05 Sp.Gr.H2O  
 Gas 0.58 Sp.Gr.AIR

Acoustic Velocity 1417.62 ft/s

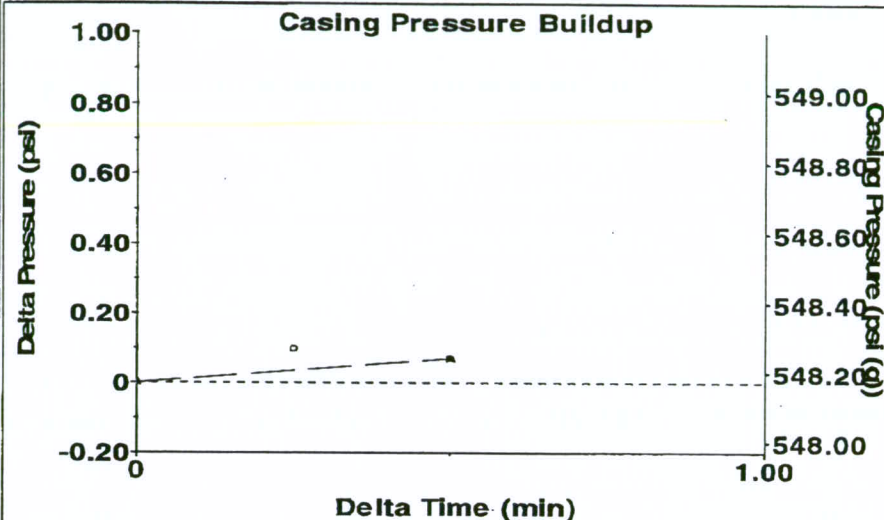
Producing

Annular  
 Gas Flow 4 Mscf/D  
 %% Liquid 84 %

Pump Intake Pressure  
 - \* - psi (g)  
 Producing BHP  
 635.3 psi (g)  
 Static BHP  
 - \* - psi (g)



Group: AREA 1 WEST Well: Zellitti A-2 (acquired on: 12/19/06 14:30:00)

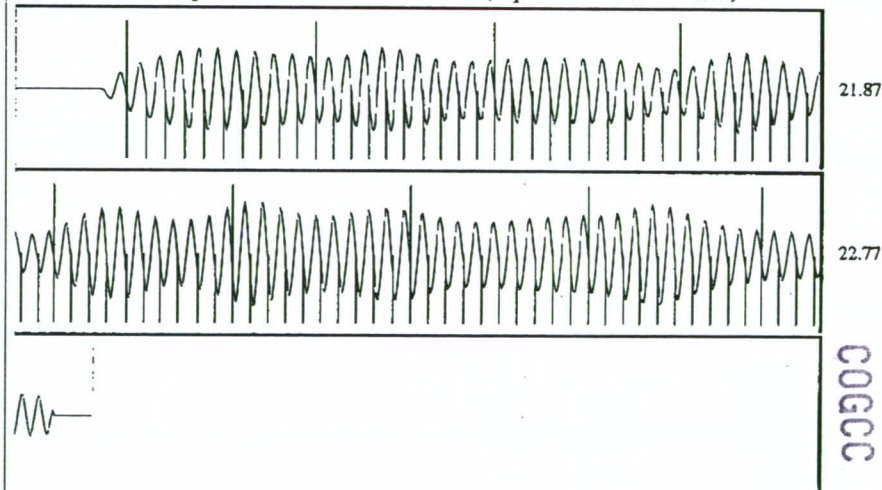


Change in Pressure 0.07 psi  
 Change in Time 0.50 min

PT 7134  
 Range

0 - ? psi

Group: AREA 1 WEST Well: Zellitti A-2 (acquired on: 12/19/06 14:30:00)



Acoustic Velocity 1417.62 ft/s  
 Joints Per Second 22.3599 jts/sec  
 Depth to liquid level 2974.16 ft  
 Automatic Collar Count Yes

Joints counted 83  
 Joints to liquid level 93.8222  
 Filter Width 19.645 23.645  
 Time to 1st Collar 0.276 3.988

MAR - 1 07

RECEIVED