



02109572

RECEIVED

MAR - 1 07

COGCC



**BP America, Inc**  
501 WestLake Park Blvd.  
Houston, TX 77079-3092

Phone: 281-366-2000

February 23, 2007

Mr. Brian Macke, Director  
Colorado Oil and Gas Conservation Commission  
1120 Lincoln St., Suite 801  
Denver, CO 80203

Dear Morris:

**COGCC Order No. 112-156, Fruitland Coal Infill Well Pressure Data Requirement**

**Well – MCCA W, LEROY, GAS UNIT /B/ NO.2**

API No. 05-067-08910-00

Location – 34N 08W 21 SE-SUL, La Plata County

Date of First Delivery – 4/12/04

**Initial Pressure Information**

Information regarding this test was supplied to you on completion report Form No. 5A which was prepared for BP by Timberline. Please contact our Philip M. Loftin at the Durango Operations Center, phone (970) 247-6886 with any questions you may have about this well's initial BHP test.

**Two – Three Month Pressure Information**

Maximum Pressure Recorded – 682 PSIA @ 2,602' KB

“Initial Pressure” from PTA Analysis – 862 PSIA

Date Measured – 10/17/04

Shut-in Time – 5.2 Days

Cumulative Recovery @ Shut-in – 187.290 MMCF

Method – Pressure build-up with bomb at depth indicated for duration of test



RECEIVED

MAR - 1 07

COGCC



**Three Year Pressure Information**

Maximum Pressure – 393 PSIG @ 0' KB (Corrected to 490 PSIA @ 2,602' KB)

Date Measured – 2/19/07

Shut-in Time – 4.8 Days

Cumulative Recovery @ Shut-in – 1,460 MMCF

Method – Surface pressure plus fluid level

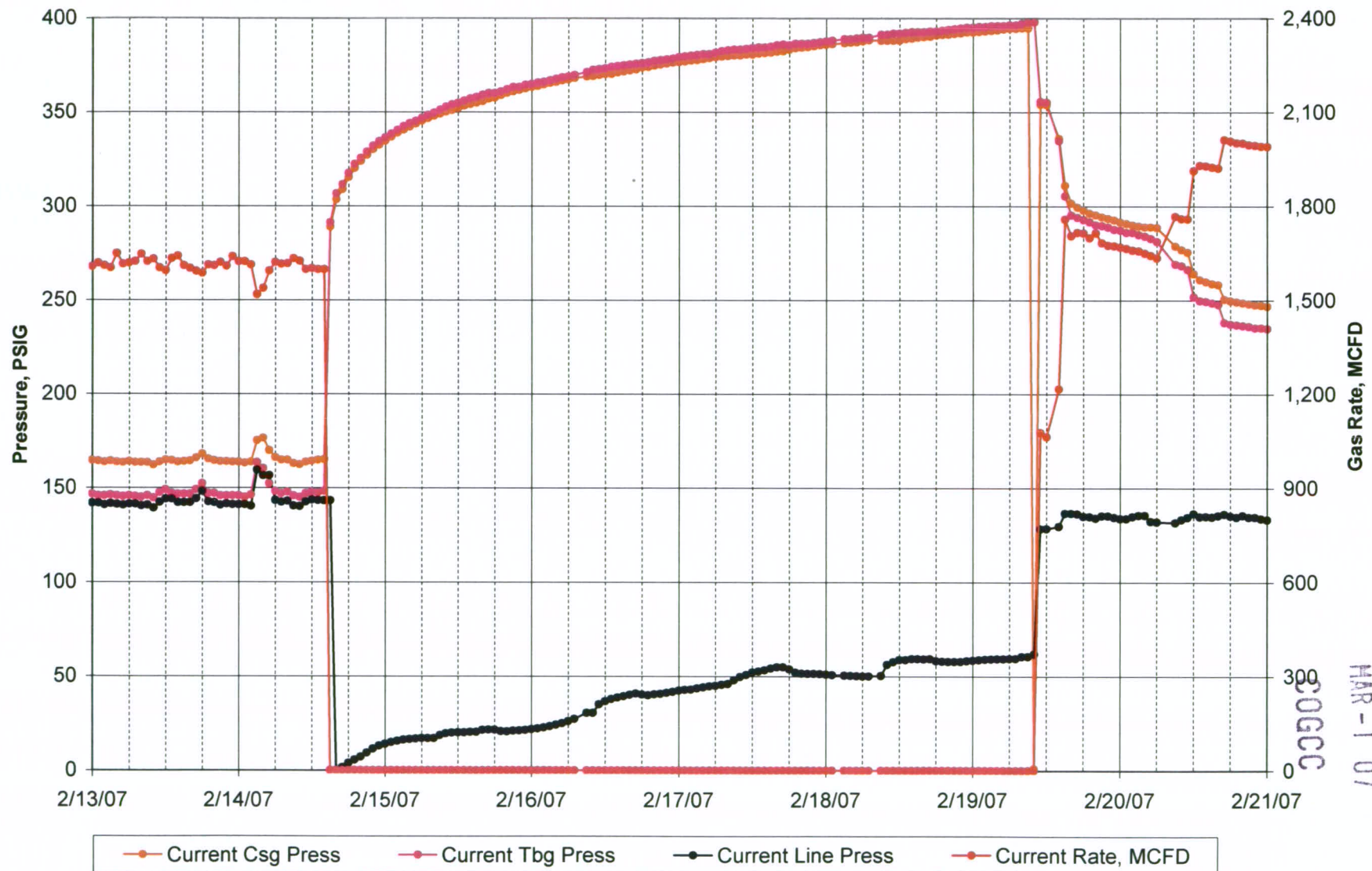
Please call me at (281) 366-5836 if you have any questions or comments regarding this information.

Yours very truly,

Roger Gierhart  
San Juan North Asset

cc: Well File

# MCCAW, LEROY GAS UNIT B 2; API - 05067089100000



RECEIVED  
MAR - 1 07  
0606CC

RECEIVED

MAR - 1 07

COGCC

**MCCAW, LEROY GAS UNIT B 2; API - 05067089100000**

Maximum			
Pressure			
PSIG	SI	RTP	Days SI
395	2/14/07 2:00 PM	2/19/07 10:00 AM	4.8
	Cumulative Recovery at SI, MMCF =		1,460

Data

MCCAW, LEROY GAS UNIT B 2; API - 05067089100000.xls

2/23/2007

10:47 AM

# Subsequent Infill Well Pressure with Sonic Fluid Level

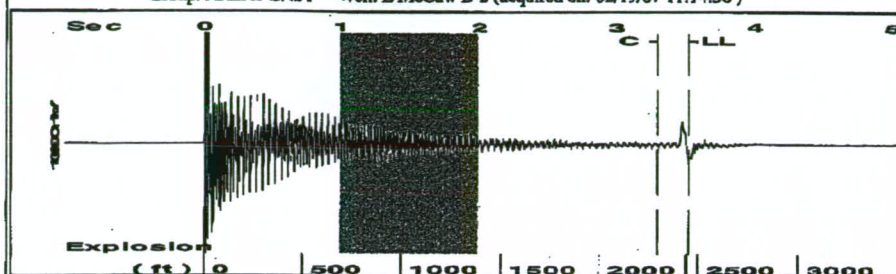
RECEIVED

MAR - 1 07

Data	Input	COGCC
Well	MCCAW, LEROY GAS UNIT B 2	
API Number	05067089100000	
Date and time of Sonolog shot	02/19/2007 11:14:30 AM	
SI Casing Pressure, PSIG	393	
Gas / Liquid Interface Pressure, PSIG	415	
Liquid Level, ft	2,455 (Driller's Depth)	
Ref. Depth, ft (10/04 test @ 2,602' KB)	2,602 (Driller's Depth)	
Equivalent Gas Free Liquid HT, TVD	147	
Calculations		
Bottomhole Pressure, PSIG	479	
Bottomhole Pressure, PSIA	490	
Reference Depth, Ft	2,602 (Driller's Depth)	



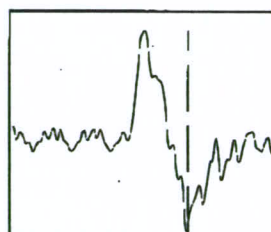
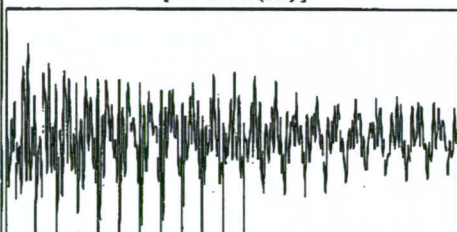
Group: AREA1 EAST Well: L McCaw B-2 (acquired on: 02/19/07 11:14:30)



Filter Type High Pass Automatic Collar Count Yes  
 Manual Acoustic Vel 1384.28 ft/s Manual JTS/sec 21.8341

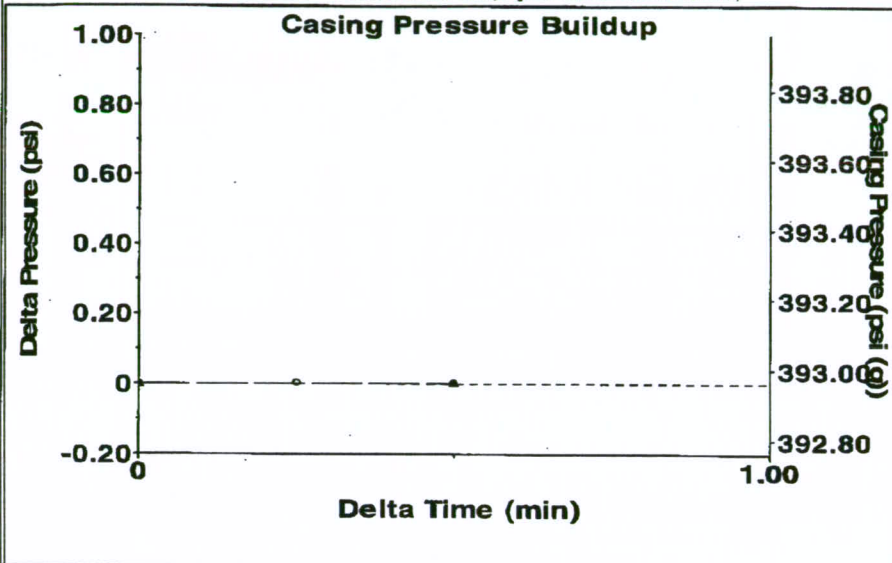
Time 3.529 sec  
 Joints 77.4315 Jts  
 Depth 2454.58 ft

[1.0 to 2.0 (Sec)]



Analysis Method: Automatic

Group: AREA1 EAST Well: L McCaw B-2 (acquired on: 02/19/07 11:14:30)



Change in Pressure 0.00 psi

PT 8107

Change in Time 0.50 min

Range

0 - ? psi

Group: AREA1 EAST Well: L McCaw B-2 (acquired on: 02/19/07 11:14:30)

## Production

Current Potential  
 Oil - \* - BBL/D  
 Water - \* - BBL/D  
 Gas - \* - Mscf/D

IPR Method Vogel  
 PBHP/SBHP - \* -  
 Production Efficiency 0.0

Oil 40 deg.API  
 Water 1.05 Sp.Gr.H2O  
 Gas 0.61 Sp.Gr.AIR

Acoustic Velocity 1391.09 ft/s

Casing Pressure 393.0 psi (g)  
 Casing Pressure Buildup 0.0 psi  
 0.50 min  
 Gas/Liquid Interface Pressure 414.7 psi (g)

Liquid Level 2454.58 ft

Formation Depth 2582.00 ft

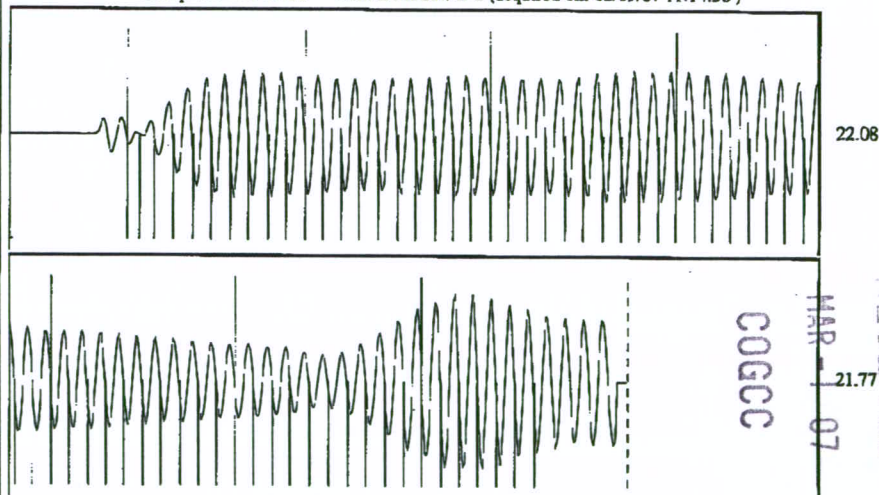
## Producing

Annular Gas Flow 0 Mscf/D  
 %% Liquid 99 %

Pump Intake Depth - \* - ft  
 Total Gaseous Liquid Column HT (TVD) 0 ft  
 Equivalent Gas Free Liquid HT (TVD) 0 ft

Pump Intake Pressure - \* - psi (g)  
 Producing BHP 452.1 psi (g)  
 Static BHP - \* - psi (g)

Group: AREA1 EAST Well: L McCaw B-2 (acquired on: 02/19/07 11:14:30)



Acoustic Velocity 1391.09 ft/s  
 Joints Per Second 21.9415 jts/sec  
 Depth to liquid level 2454.58 ft  
 Automatic Collar Count Yes

Joints counted 66  
 Joints to liquid level 77.4315  
 Filter Width 19.8341  
 Time to 1st Collar 0.292 3.3