



RECEIVED  
MAR - 1 07  
COGCC



**BP America, Inc**  
501 WestLake Park Blvd.  
Houston, TX 77079-3092

Phone: 281-366-2000

February 23, 2007

Mr. Brian Macke, Director  
Colorado Oil and Gas Conservation Commission  
1120 Lincoln St., Suite 801  
Denver, CO 80203

Dear Morris:

**COGCC Order No. 112-156, Fruitland Coal Infill Well Pressure Data Requirement**

**Well – Mayfield Gas Unit A 2 (aka MAYFIELD GAS UNIT 10U-01 NO.2)**

API No. 05-067-08935-00

Location – 34N 08W 10 NW-SUL, La Plata County

Date of First Delivery – 6/30/04

**Initial Pressure Information**

Pressure – 1,022 PSIA @ 2,350' KB (likely not good communication with reservoir)

Date Measured – 6/16/04

Shut-in Time – 20 Days

Method – Dip-in at depth indicated

**Two – Three Month Pressure Information**

No test obtained

**Three Year Pressure Information**

Maximum Pressure – 337 PSIG @ 0' KB (Corrected to 455 PSIA @ 2,350' KB)

Date Measured – 2/19/07

Shut-in Time – 4.9 Days

Cumulative Recovery @ Shut-in – 1,229 MMCF

Method – Surface pressure plus fluid level



RECEIVED  
MAR -1 07  
COGCC



Please call me at (281) 366-5836 if you have any questions or comments regarding this information.

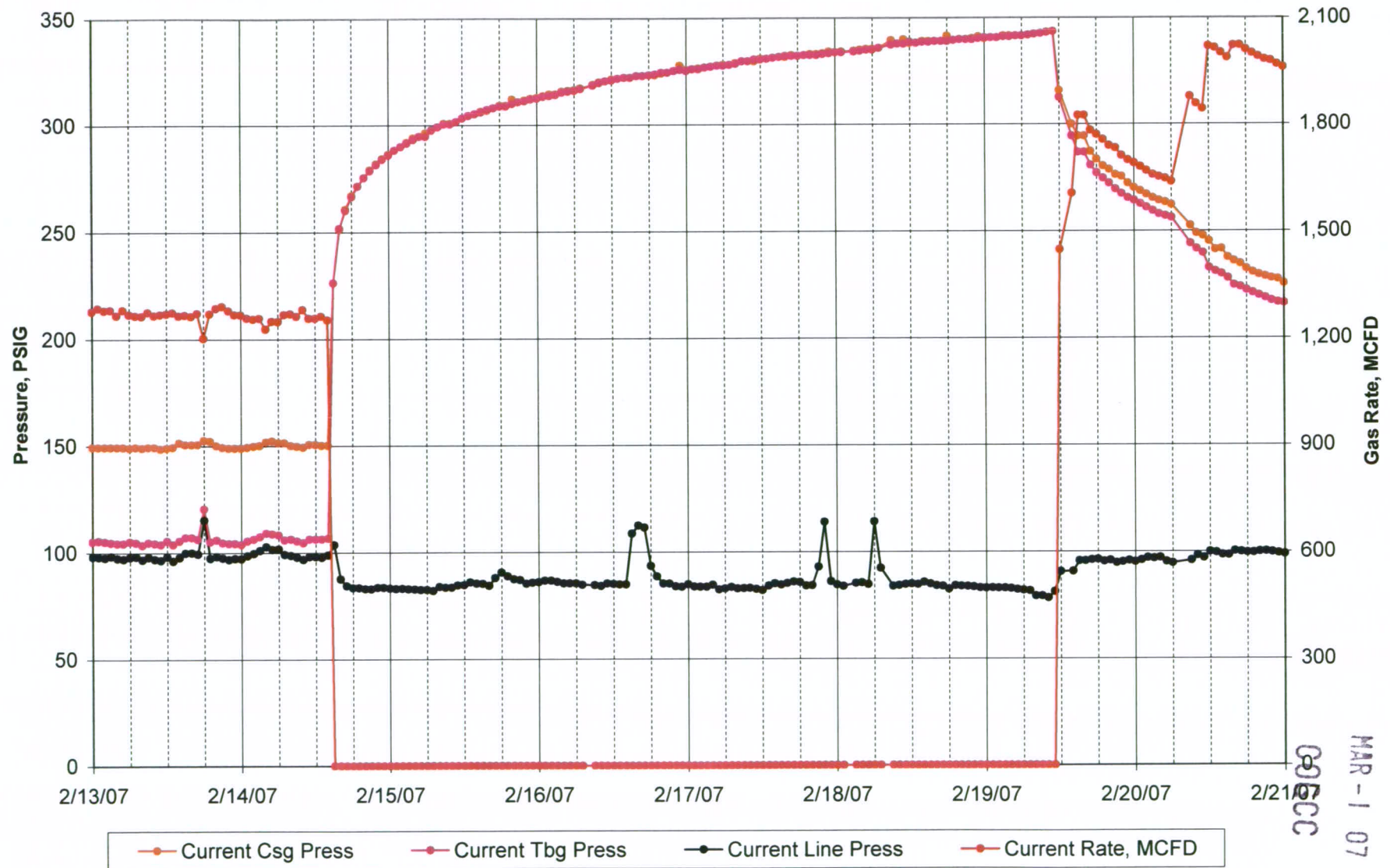
Yours very truly,

A handwritten signature in blue ink, appearing to read 'Roger Gierhart'.

Roger Gierhart  
San Juan North Asset

cc: Well File

# MAYFIELD GAS UNIT A 2; API - 05067089350000



RECEIVED  
MAR - 1 07  
0066C

RECEIVED

MAR -1 07

COGCC

**MAYFIELD GAS UNIT A 2; API - 05067089350000**

Maximum			
Pressure			
PSIG	SI	RTP	Days SI
344	2/14/07 2:00 PM	2/19/07 11:00 AM	4.9
Cumulative Recovery at SI, MMCF =			1,229

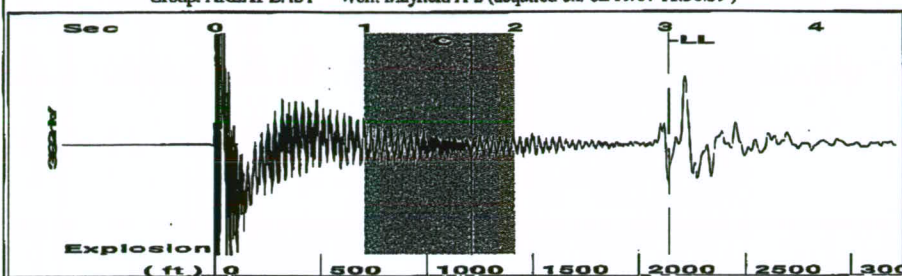
# Subsequent Infill Well Pressure with Sonic Fluid Level

RECEIVED

MAR -1 07

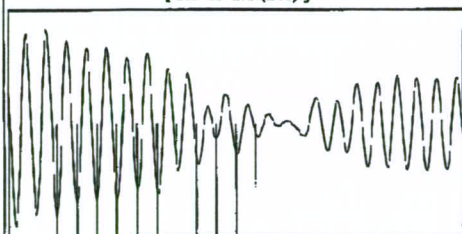
Data	Input	COGCC
Well	MAYFIELD GAS UNIT A 2 (aka MAYFIELD GAS UNIT 10U-01 NO. 2)	
API Number	05067089350000	
Date and time of Sonolog shot	02/19/2007 11:56:59 AM	
SI Casing Pressure, PSIG	337	
Gas / Liquid Interface Pressure, PSIG	353	
Liquid Level, ft	2,140	(Driller's Depth)
Ref. Depth, ft (6/04 test @ 2,350' KB)	2,350	(Driller's Depth)
Equivalent Gas Free Liquid HT, TVD	210	
<b>Calculations</b>		
Bottomhole Pressure, PSIG	443	
Bottomhole Pressure, PSIA	455	
Reference Depth, Ft	2,350	(Driller's Depth)

Group: AREA1 EAST Well: Mayfield A-2 (acquired on: 02/19/07 11:56:59)

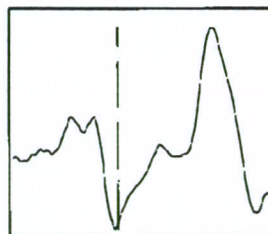


Filter Type Band Pass Automatic Collar Count Yes Time 3.021 sec  
 Manual Acoustic Velocity 1450.8 ft/s Manual JTS/sec 22.8833 Joints 67.5084 Jts  
 Depth 2140.02 ft

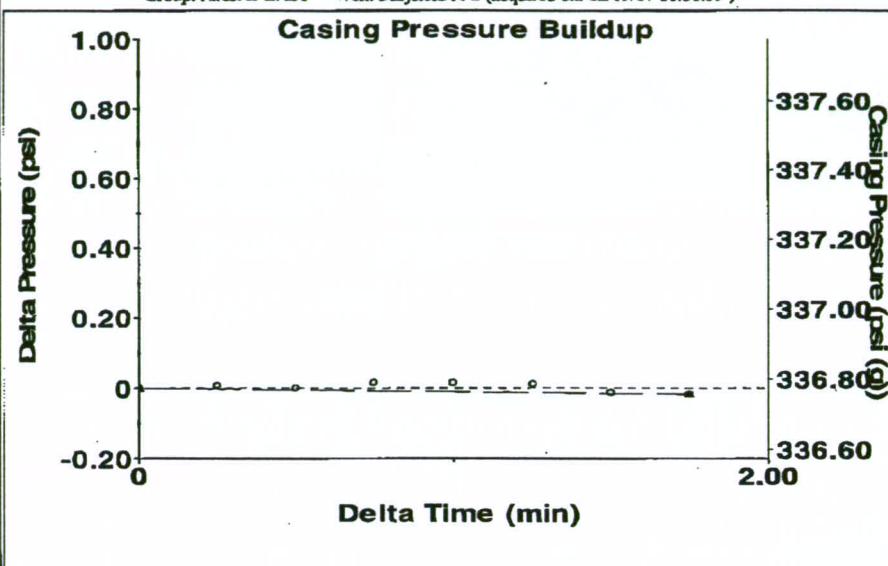
[ 1.0 to 2.0 (Sec) ]



Analysis Method: Manual



Group: AREA1 EAST Well: Mayfield A-2 (acquired on: 02/19/07 11:56:59)



Change in Pressure -0.02 psi  
 Change in Time 1.75 min

PT 8107  
 Range 0 - 7 psi

Group: AREA1 EAST Well: Mayfield A-2 (acquired on: 02/19/07 11:56:59)

Production  
 Current Potential  
 Oil - \* - BBL/D  
 Water - \* - BBL/D  
 Gas - \* - Mscf/D  
 IPR Method Vogel  
 PBHP/SBHP - \* -  
 Production Efficiency 0.0

Oil 40 deg.API  
 Water 1.05 Sp.Gr.H2O  
 Gas 0.59 Sp.Gr.AIR

Acoustic Velocity 1416.76 ft/s

Casing Pressure 336.8 psi (g)  
 Casing Pressure Buildup -0.0 psi  
 1.75 min  
 Gas/Liquid Interface Pressure 352.5 psi (g)

Liquid Level 2140.02 ft

Formation Depth 2236.00 ft

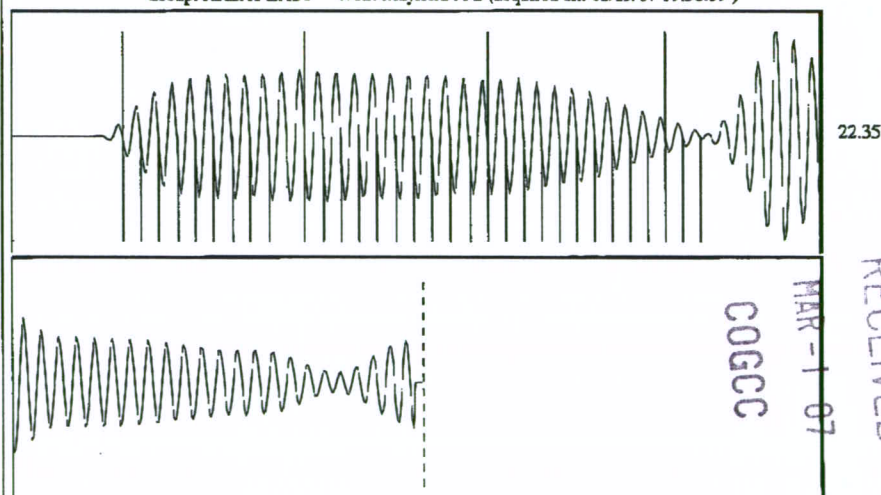
Pump Intake Depth - \* - ft  
 Total Gaseous Liquid Column HT (TVD) 0 ft  
 Equivalent Gas Free Liquid HT (TVD) 0 ft

Producing

Annular Gas Flow 0 Mscf/D  
 %% Liquid 100 %

Pump Intake Pressure - \* - psi (g)  
 Producing BHP 380.0 psi (g)  
 Static BHP - \* - psi (g)

Group: AREA1 EAST Well: Mayfield A-2 (acquired on: 02/19/07 11:56:59)



Acoustic Velocity 1416.76 ft/s Joints counted 32  
 Joints Per Second 22.3464 jts/sec Joints to liquid level 67.5084  
 Depth to liquid level 2140.02 ft Filter Width 20.8833 24.8833  
 Automatic Collar Count Yes Time to 1st Collar 0.276 1.708