



RECEIVED

MAR - 1 07

COGCC



BP America, Inc
501 WestLake Park Blvd.
Houston, TX 77079-3092

Phone: 281-366-2000

February 23, 2007

Mr. Brian Macke, Director
Colorado Oil and Gas Conservation Commission
1120 Lincoln St., Suite 801
Denver, CO 80203

Dear Brian:

COGCC Order No. 112-156, Fruitland Coal Infill Well Pressure Data Requirement

Well - Loret, Sally Jo Gas Unit A #2

API No. 05-067-08497-00

Location - 34N 08W 09 NE - SUL, La Plata County

Date of First Delivery - 6/3/03

Initial Pressure Information

Pressure - 638 PSIA @ 2,171' KB

Date Measured - 6/2/03

Shut-in Time - 21 Days

Method - Dip-in at depth indicated

Two - Three Month Pressure Information

Maximum Pressure Recorded - 565 PSIA @ 2,171' KB

"Initial Pressure" from PTA Analysis - 625 PSIA

Date Measured - 9/14/03

Shut-in Time - 5 Days

Cumulative Recovery @ Shut-in - 89.962 MMCF

Method - Pressure build-up with bomb at depth indicated for duration of test



RECEIVED
MAR -1 07
COGCC



Three Year Pressure Information

Maximum Pressure – 292 PSIG @ 0' KB (Corrected to 317 PSIA @ 2,187' KB)
Date Measured – 2/16/07
Shut-in Time – 2.2 Days
Cumulative Recovery @ Shut-in – 1,524 MMCF
Method – Surface pressure plus fluid level

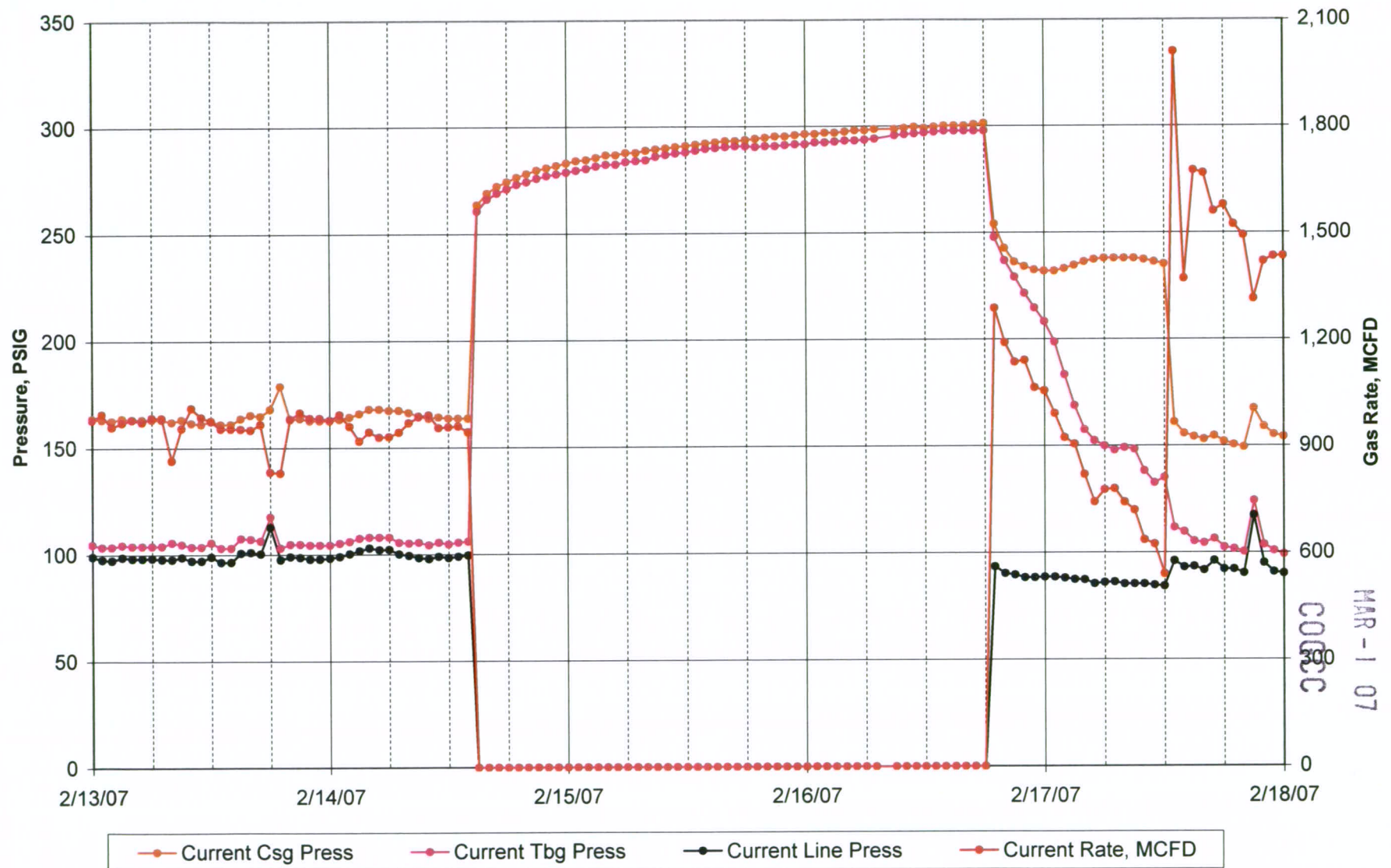
Please call me at (281) 366-5836 if you have any questions or comments regarding this information.

Yours very truly,

Roger Gierhart
San Juan North Asset

cc: Well File

LORETT, SALLY JO GAS UNIT A 2; API - 05067084970000



RECEIVED

MAR - 1 07

COCC

RECEIVED

MAR -1 07

COGCC

LORETT, SALLY JO GAS UNIT A 2; API - 05067084970000

Maximum			
Pressure			
PSIG	SI	RTP	Days SI
301	2/14/07 2:00 PM	2/16/07 6:00 PM	2.2
Cumulative Recovery at SI, MMCF =			1,524

Data

2/23/2007

LORETT, SALLY JO GAS UNIT A 2; API - 05067084970000.xls 10:48 AM

Subsequent Infill Well Pressure with Sonic Fluid Level

RECEIVED

MAR -1 07

COGCC

Data	Input		
Well	LORETT, SALLY JO GAS UNIT A 2		
API Number	05067084970000		
Date and time of Sonolog shot	02/16/2007 07:11:22 PM		
SI Casing Pressure, PSIG	292		
Gas / Liquid Interface Pressure, PSIG	305		
Liquid Level, ft	2,219 (Driller's Depth)		
Pump Intake Depth, ft	2,187 (Driller's Depth)		
Equivalent Gas Free Liquid HT, TVD	0		
Calculations			
Bottomhole Pressure, PSIG	305		
Bottomhole Pressure, PSIA	317		
Reference Depth, Ft	2,187 (Driller's Depth)		

